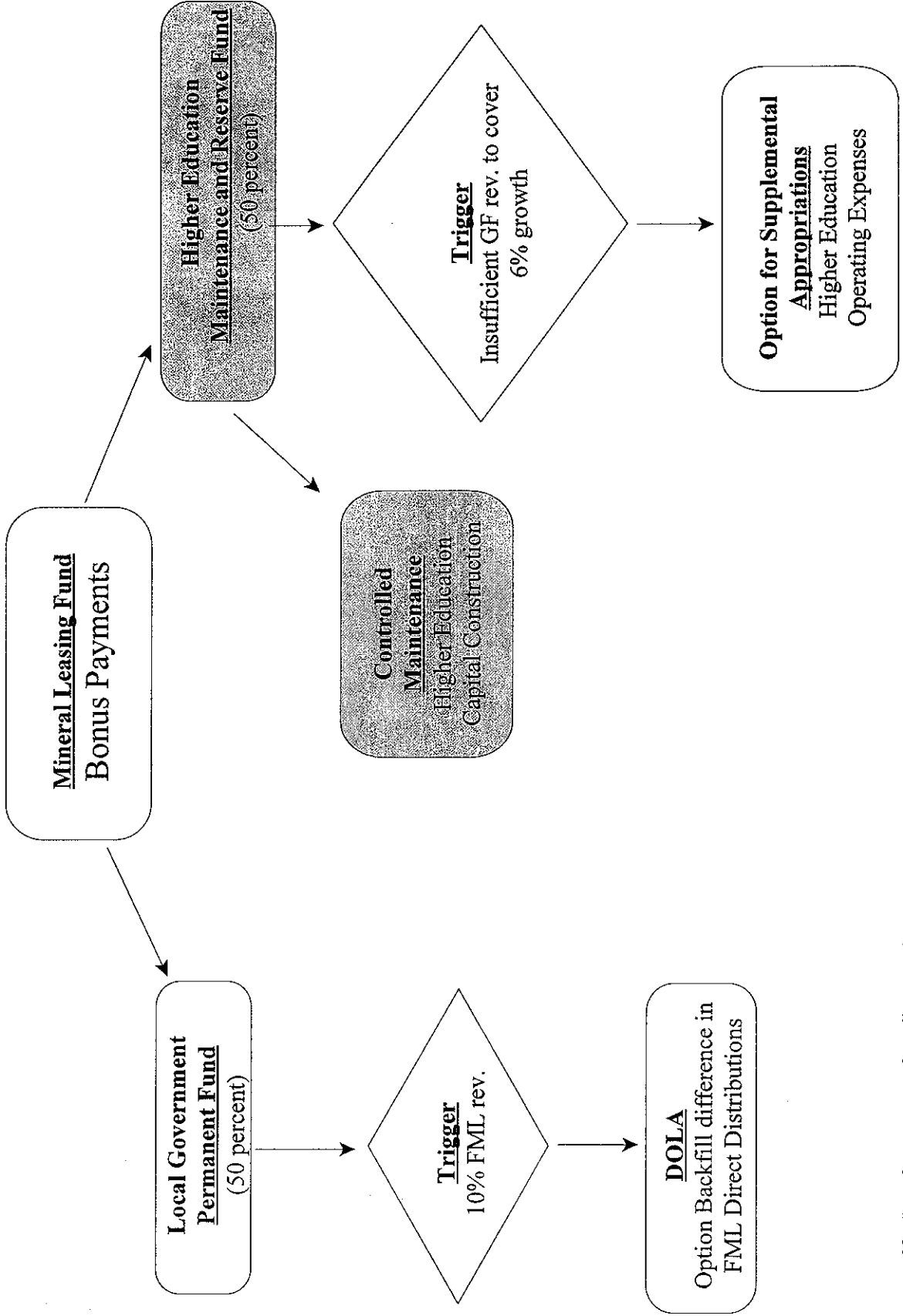
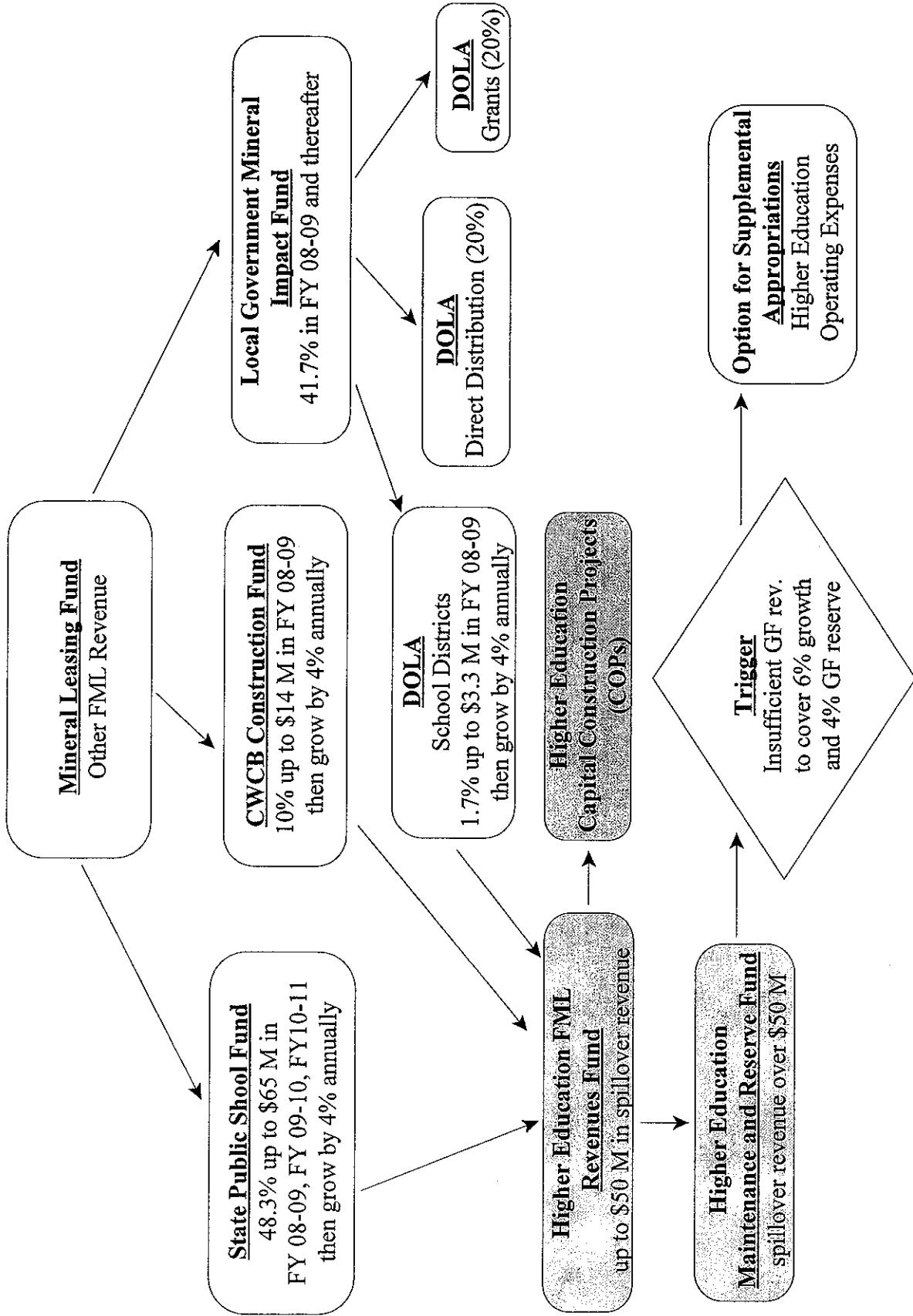


# Distribution of Bonus Payments



**Distribution of Other (non-bonus) FML Moneys**



**Sept 2009 Legislative Council Forecast for FML Distribution, In Millions**

	FY10	FY11	FY12
<b>Total FML Revenue</b>	<b>90.6</b>	<b>111.7</b>	<b>129.5</b>
<b>Bonus Payments (portion of total FML revenue)</b>	<b>4.5</b>	<b>5.6</b>	<b>12.9</b>
Local Government Perm Fund	2.3	2.8	6.5
Higher Ed Maintenance Reserve Fund	2.3	2.8	6.5
<b>Other (non-bonus) FML Revenue</b>	<b>86.0</b>	<b>106.1</b>	<b>116.5</b>
State Public School Fund	41.6	51.3	56.3
Colorado Water Conservation Board	8.6	10.6	11.7
DOLA Grants	17.2	21.2	23.3
DOLA Direct Distribution	17.2	21.2	23.3
School Districts	1.5	1.8	2.0
Spillover to HiEd FML Rev Fund	0.0	0.0	0.0
Spillover to HiE dMaint&Reserve Fund	0.0	0.0	0.0
<b>Total Higher Ed Maintenance Reserve Fund</b>	<b>2.3</b>	<b>2.8</b>	<b>6.5</b>

*Prepared by Legislative Council Staff, September 20, 2009*