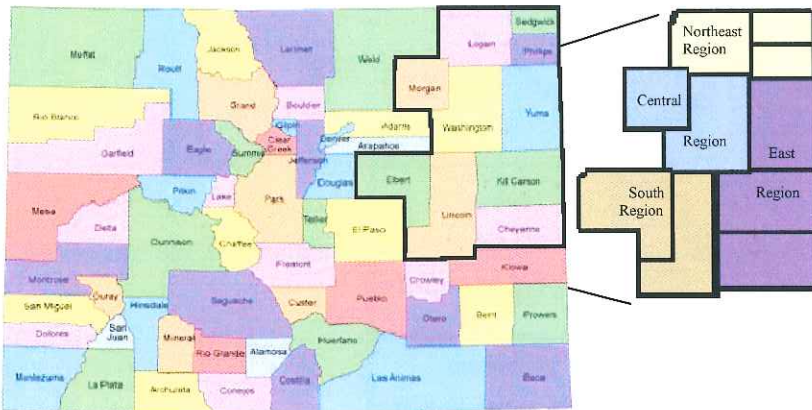


CENTENNIAL MENTAL HEALTH CENTER, INC

Our mission is to achieve excellence in the provision of behavioral health services that lead to optimal health and well being.

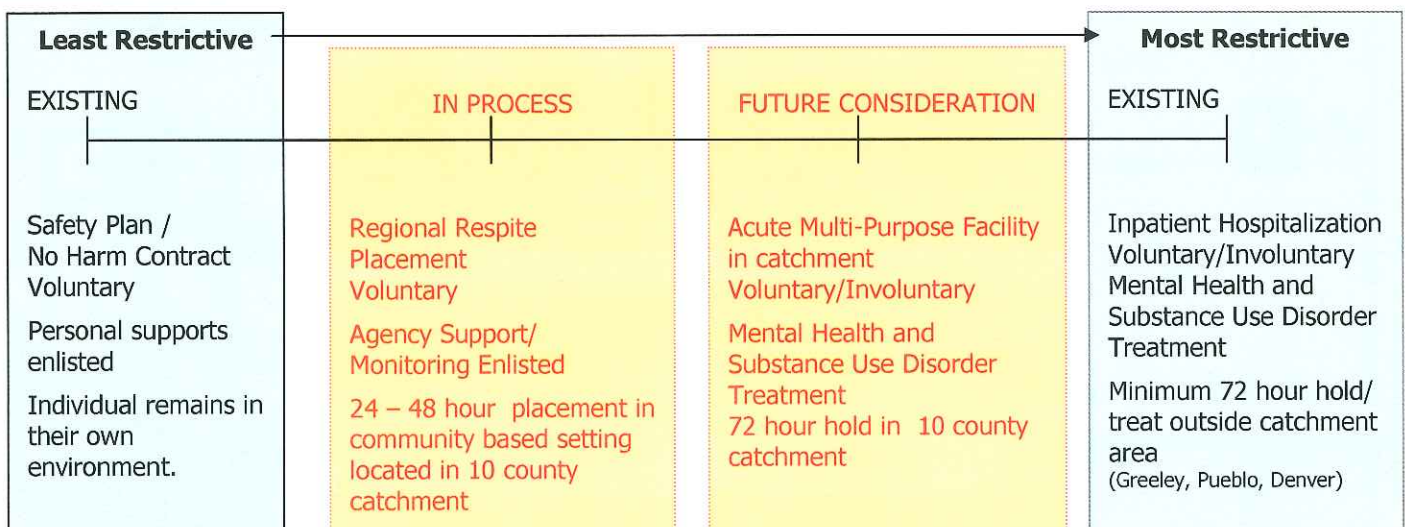


- 10 - Number of counties in Centennial's service area: Cheyenne, Elbert, Kit Carson, Lincoln, Logan, Morgan, Phillips, Sedgwick, Washington, and Yuma
- 63 - Number of communities in Centennial's service area
- 4,416 - Number of individuals served in FY 2010-2011
- 78,370 - Number of combined mental health and substance abuse services provided in FY 2010-2011
- 50 - percentage of total budget allocated to provide services to Medicaid eligible individuals.
- 10 - Number of funding sources for Centennial operations: Medicaid, Medicare, Division of Behavioral Health, DSS/DHS Core Services, 3rd party insurance, self pay, county contributions, grants, local community contracts, and investments.

Centennial has office locations in Holyoke, Julesburg, Sterling, Fort Morgan, Akron, Yuma, Wray, Burlington, Limon, Elizabeth, and Cheyenne Wells. Centennial's business office is located in Sterling.

www.centennialmhc.org

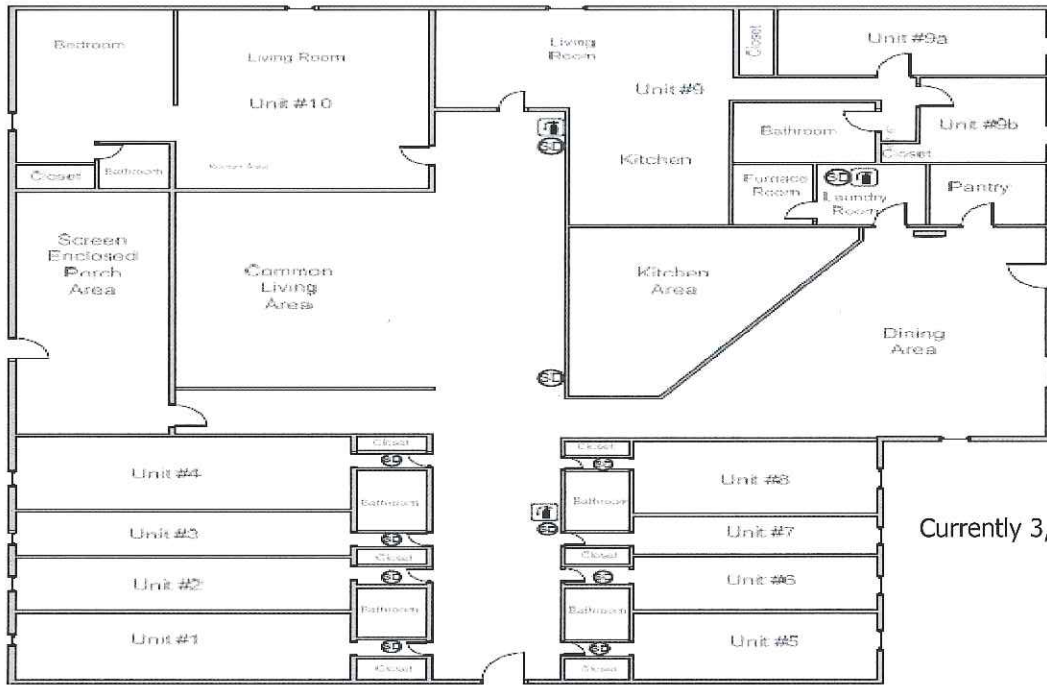
Crisis Intervention Placement Continuum



The CCTMH Crisis Intervention Committee is comprised of representatives from Centennial Mental Health Center's Board of Directors and Staff, Sterling Regional MedCenter, Yuma District Hospital, Melissa Memorial Hospital, Logan County Sheriff (on behalf of ten County Sheriff's of Northeast Colorado), Northeastern Junior College (NJC) and Sterling Police Department.

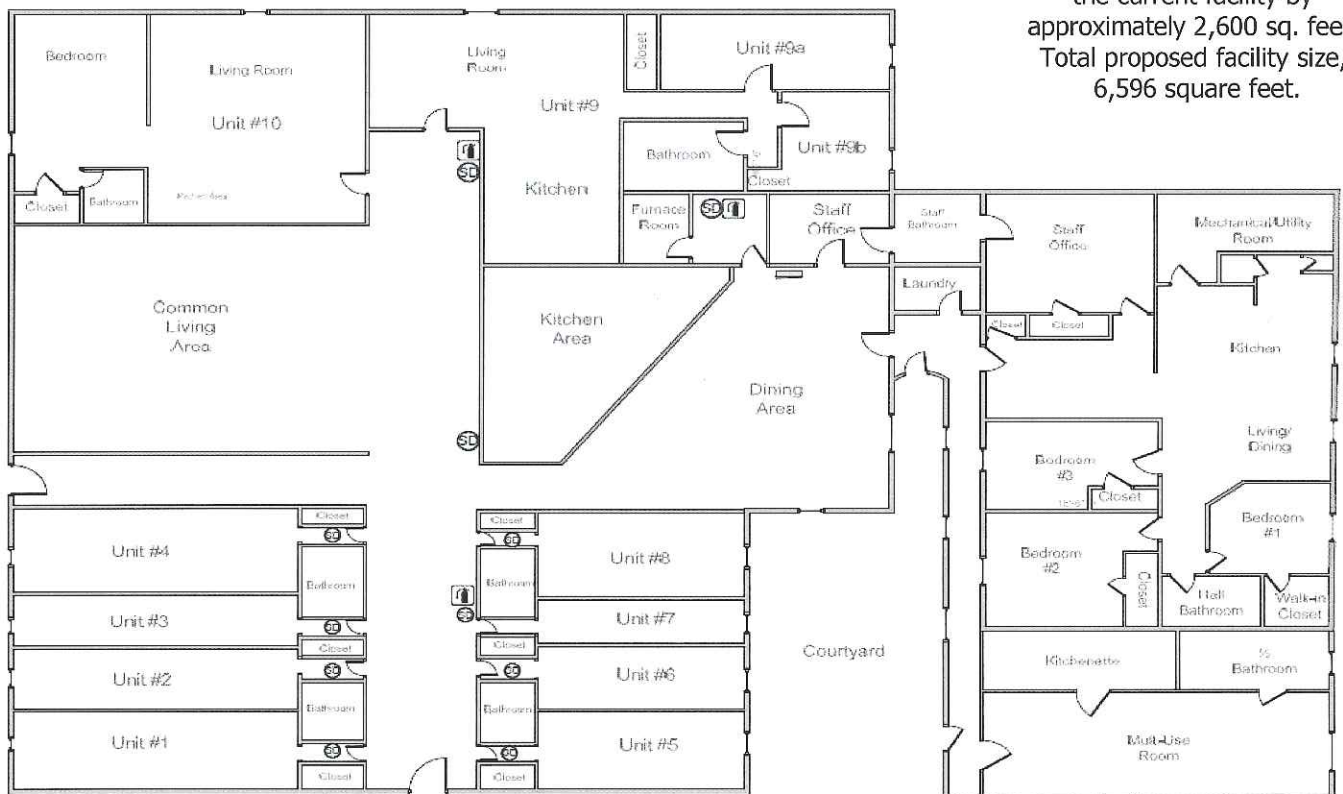
Our Motto: Helping communities change— one life at a time.

Current Floor Plan



Currently 3,996 square feet.

Proposed Floor Plan



A proposed increase in the size of the current facility by approximately 2,600 sq. feet. Total proposed facility size, 6,596 square feet.