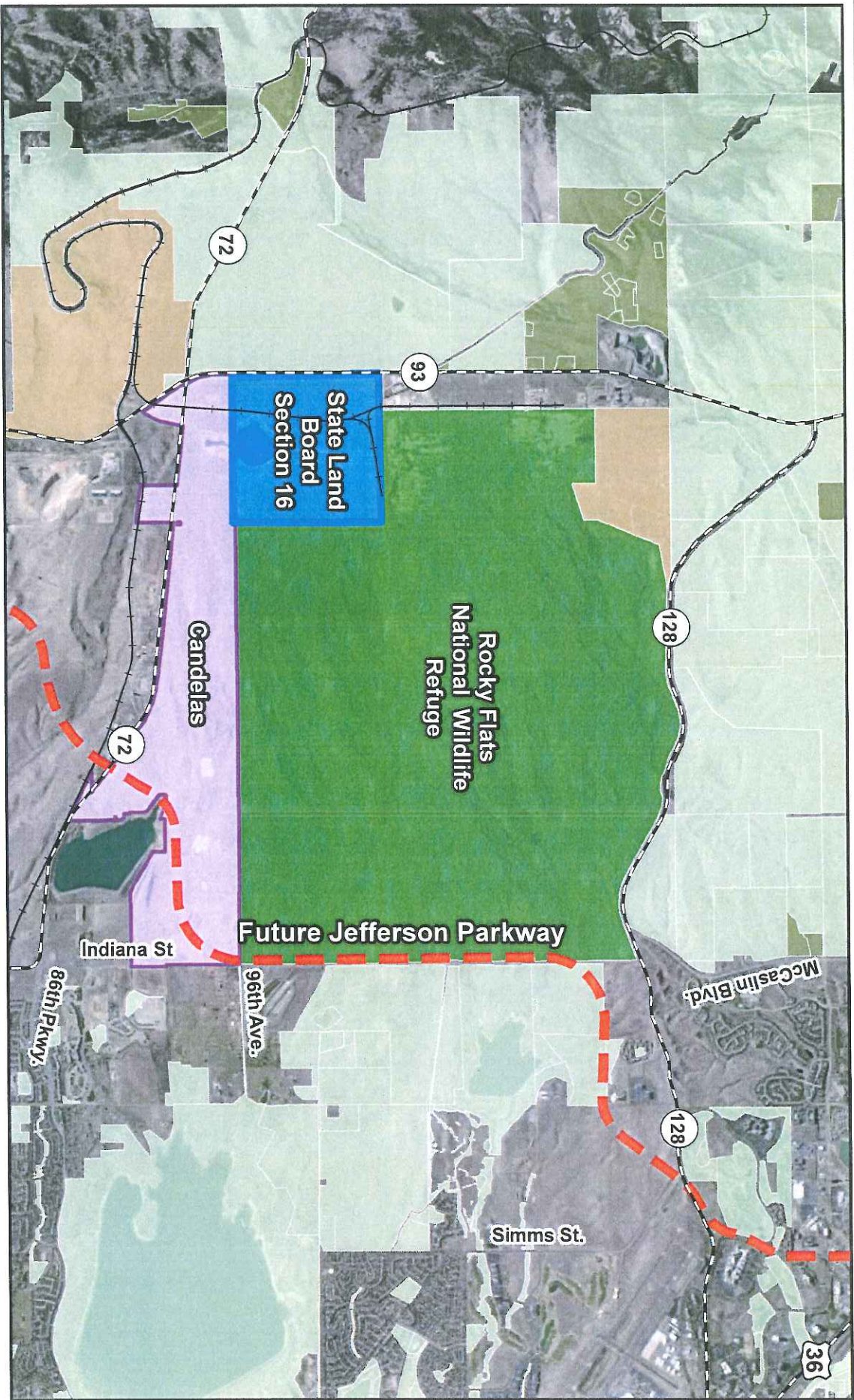


DATE: 11/4/2008

Jefferson Parkway and other Future Regional Improvements

- Proposed Jefferson Parkway
- Proposed Other Major Regional Arterial
- Connections to Existing Beltway
- Interchange
- Open Space and Public Lands
- Cities
- Counties

The maps provided are graphical representations intended for general informational purposes only and may not reflect the most current information or conditions. THE CITY OF ARVADA MAKES NO WARRANTY OF MERCHANTABILITY OR WARRANTY FOR FITNESS OF USE FOR A PARTICULAR PURPOSE EXPRESSED OR IMPLIED WITH RESPECT TO THESE GRAPHICAL REPRESENTATIONS OR THE UNDERLYING DATA. Any users of these graphical representations of map products accept same AS IS WITH ALL FAULTS and assumes all responsibility for the use thereof and further operations to not the City harmless from and against all damage, loss or liability arising from the use of this map product, in consideration of the City's having made this information available.



JEFFERSON PARKWAY & SECTION 16 AREA



1:60,000
0 5,000 Feet

LEGEND

- Rocky Flats Section 16
- Future Jefferson Parkway
- Open Space and Parks
- Other Public Lands
- Conservation Easement
- Rocky Flats National Wildlife Refuge
- Candelas
- Highways
- Railroad

DATE: 8/9/2012 AERIAL DATE: 2011

The maps provided are graphical representations intended for general informational purposes only, and may not reflect the most current information or conditions. THE CITY OF ARVADA MAKES NO WARRANTY OF MERCHANTABILITY OR FITNESS FOR FITNESS OF USE FOR A PARTICULAR PURPOSE. EXPRESSED OR IMPLIED. WITH RESPECT TO THE DATA, GRAPHICS, OR REPRESENTATIONS ON THESE OR MAP PRODUCTS ACCEPTED AS IS. THE CITY OF ARVADA AND ITS EMPLOYEES MAKE NO WARRANTY, AND ASSUMES ALL RESPONSIBILITY FOR THE USE THEREOF, AND FURTHER, COVENANTS TO HOLD THE CITY HARMLESS FROM AND AGAINST ALL DAMAGE, LOSS, OR LIABILITY ARISING FROM THE USE OF THIS MAP PRODUCT. IN CONSIDERATION OF THE CITY'S HAVING MADE THIS INFORMATION AVAILABLE.

g:\GIS_Data\WXC\City_Manager\Bill_Ruferson\JeffersonParkway_Section16_Letter_201208.mxd