

COLORADO CENTER
for
HOSPICE & PALLIATIVE CARE

Legislative Summer Interim Committee
On Hospice & Palliative Care
July 8, 2009; 9:15 - 10:00 AM

Introduction to Hospice & Palliative Care
Cordt T. Kassner, PhD
CEO, Colorado Center for Hospice & Palliative Care

25% of deaths occur at home –
more than 70% of Americans
would prefer to die at home

(Robert Wood Johnson Foundation)

What Does Hospice Do?

- › Aggressively treats pain and symptoms of end-stage illness
- › Supports independence and provides whole-person care for individuals and families
- › Affirms life and neither hastens nor postpones death
- › Focuses on quality of life for individuals and their family caregivers
- › Partners with you and your family on the final journey of life

What Are Core Services/Features of Hospice Care?

- › Patient/family focused
- › Interdisciplinary
- › Provides a range of services:
 - Care by a team of specially trained professionals
 - Medications
 - Durable medical equipment
 - Supplies
 - Volunteers
 - Grief support

What Other Services Are Offered?

- ▶ Hospices offer additional services, including:
 - Hospice residential care (facility)
 - Inpatient hospice care (SNF, Hospital, ALR)
 - Palliative care
 - Complementary therapies
 - Specialized pediatric team
 - Caregiver training classes

Who Is on the Hospice Team?

- ▶ Your personal physician
- ▶ Hospice physician (medical director)
- ▶ Nurses
- ▶ Home health aides
- ▶ Social workers
- ▶ Clergy or other counselors
- ▶ Speech, physical, and occupational therapists
- ▶ Trained volunteers
- ▶ *You and your family members!*

What Does the Team Do?

- ▶ In consultation with you, develops a plan of care
- ▶ Manages pain and symptoms while respecting your choices and values
- ▶ Attends to your practical, emotional, psychosocial and spiritual concerns and those of your family
- ▶ Helps family understand how to provide care, enhance quality of life, and deal with distress
- ▶ Provides bereavement care and counseling

Where Is Hospice Care Provided?

- ▶ Wherever you call "home"
- ▶ Home
- ▶ Nursing Facility
- ▶ Assisted Living Facility
- ▶ Hospital
- ▶ Hospice residence or unit
- ▶ Prison, homeless shelter, etc.

Who Pays for Hospice Care?

- ▶ Medicare 87%
- ▶ Medicaid 5%
- ▶ Insurance
- ▶ Private pay
- ▶ Grant or donation-funded charity care
- ▶ Sometimes a combination of these...

in order

What Are the Admission Criteria for Hospice?

- ▶ Life-limiting illness, prognosis is 6 months or less if the disease takes normal course
- ▶ Forego "curative care"
- ▶ Live in service area
- ▶ Consent to accept services

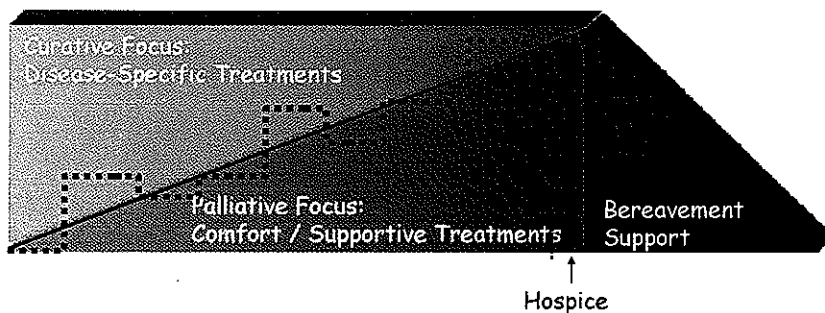
What Are the Benefits of Hospice Care?

- ▶ Care plan specially designed to meet your needs and desires
- ▶ Specialized expert treatment for pain and symptoms
- ▶ Convenient, 24/7, "one-stop shopping" for all care needs
- ▶ Care delivered to you: avoids frequent office visits, trips to ER, hospitalization
- ▶ Attention to family and caregivers; practical, financial, and emotional support

What Is Palliative Care?

- ▶ Compassionate, "whole person," aggressive care throughout serious or chronic illness
- ▶ Focused on relief of physical pain & personal distress
- ▶ Designed to identify and support evolving goals, manage choices
- ▶ Create a holistic plan for living well with illness
- ▶ Offered by consultation team, private practitioner, hospice agency team
- ▶ *Full-spectrum services not currently covered by Medicare*

How Do Curative, Palliative, and Hospice Care Work Together?



Caring Connections

Colorado Center for Hospice & Palliative Care 13

What Conditions Can be Helped by Palliative Care?

- › COPD
- › CHF
- › Alzheimer's
- › Dementia
- › Multiple Sclerosis
- › Kidney disease
- › Parkinson's
- › AIDS
- › Cancer
- › ALS
- › Liver disease
- › Diabetes

Caring Connections

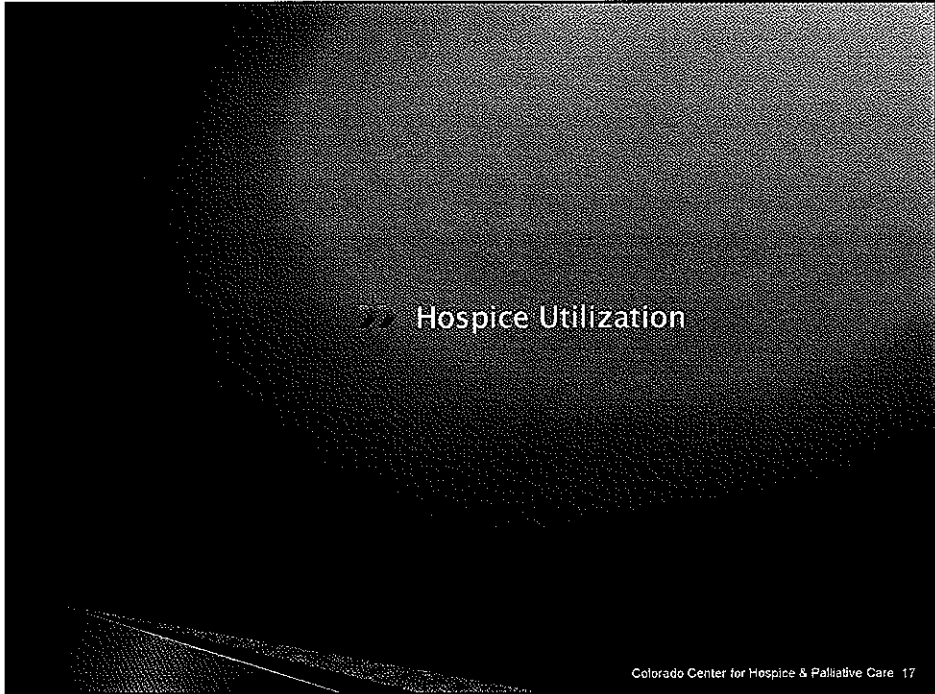
Colorado Center for Hospice & Palliative Care 14

Who Offers Palliative Care?

- ▶ Kaiser
- ▶ University Hospital, Boulder Community Hospital, Memorial Hospital (Colorado Springs), Children's Hospital
- ▶ Exempla, Health One, Centura hospitals
- ▶ Veterans Administration facilities
- ▶ Hospice Transition, open access programs
- ▶ Some home health & long term care***
- ▶ Consultation through private palliative care physician or nursing professional

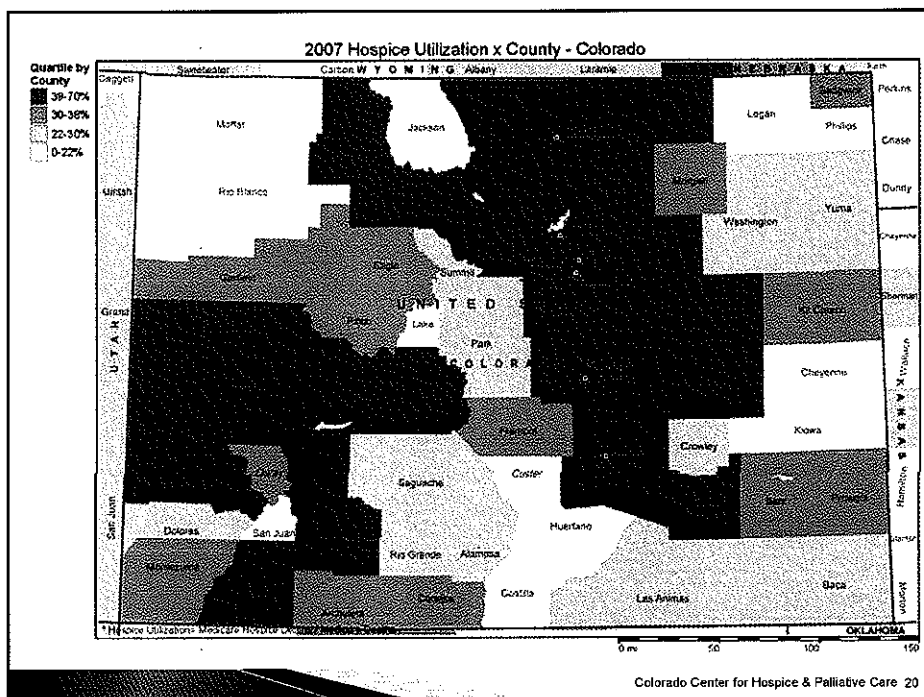
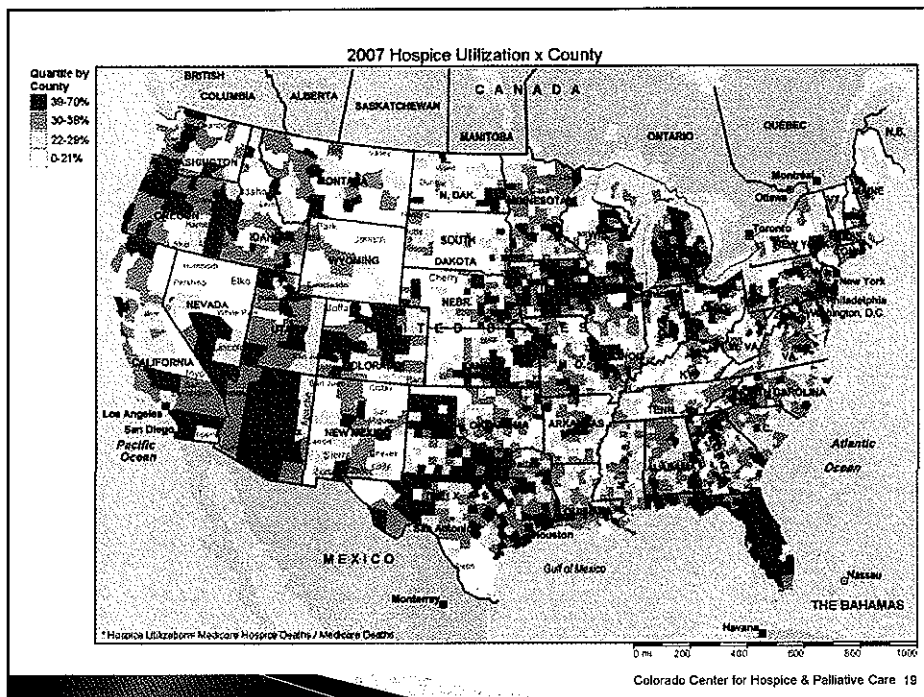
What Are Benefits of Palliative Care?

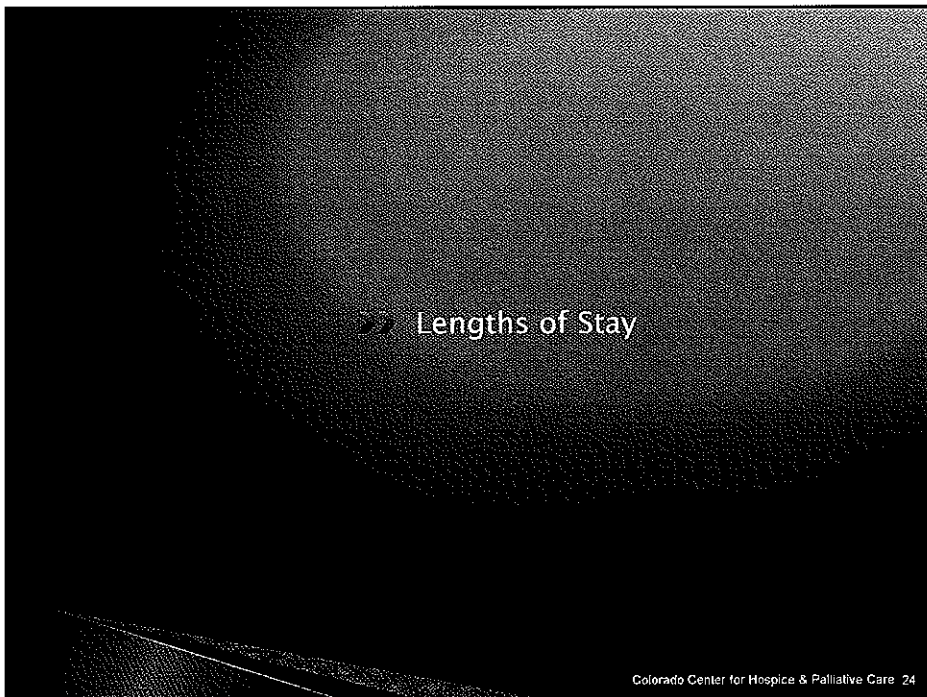
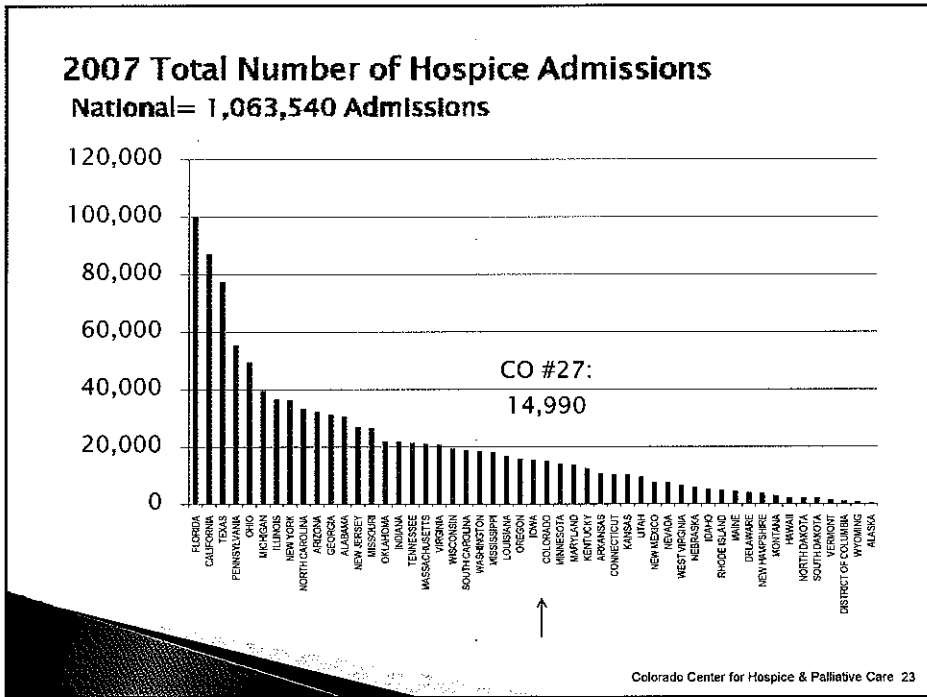
- ▶ Comfort, quality of life
- ▶ Participation in planning for care
- ▶ Opportunities to reflect, make considered choices, determine your future
- ▶ Account for more than just physical/medical concerns
- ▶ Involvement of family and loved ones in decision making
- ▶ Support for family and caregivers: education, counseling, respite



2007 Demographics & Hospice Utilization

	Colorado	National
Population	4,842,770	301,290,332
Total Deaths	28,413 0.59% of population	2,420,605 0.80% of population
Medicare Deaths	22,399 78.83% of total deaths	1,875,500 77.48% of total deaths
Medicare Hospice Patients Admitted	14,573 51.29% of total deaths 65.06% of Medicare deaths	1,012,127 41.81% of total deaths 53.96% of Medicare deaths
Medicare Hospice Deaths	10,031 44.78% of total deaths 44.78% of Medicare deaths	673,987 27.84% of total deaths 35.94% of Medicare deaths





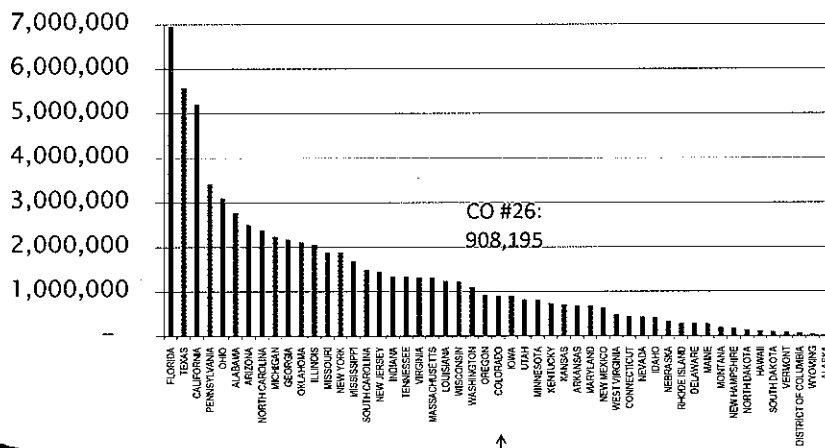
2007 Hospice Lengths of Stay

	Colorado	National
Total Days of Hospice Care	908,195 Days	69,493,544 Days
Mean Days / Patient of Hospice Care	60.59 Days	66.28 Days
Median Days / Patient of Hospice Care	20 Days	24 Days

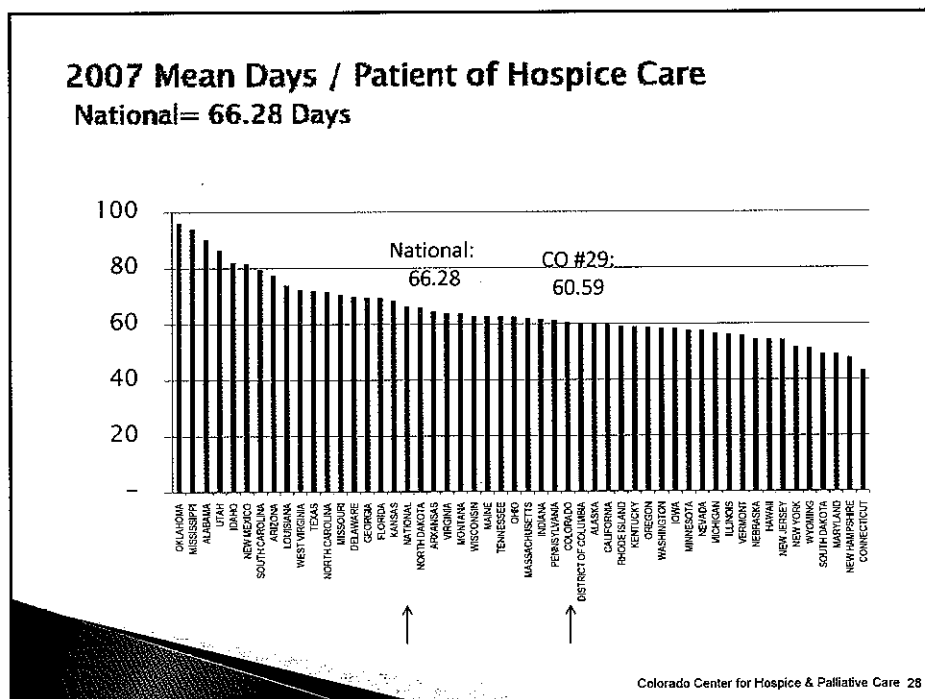
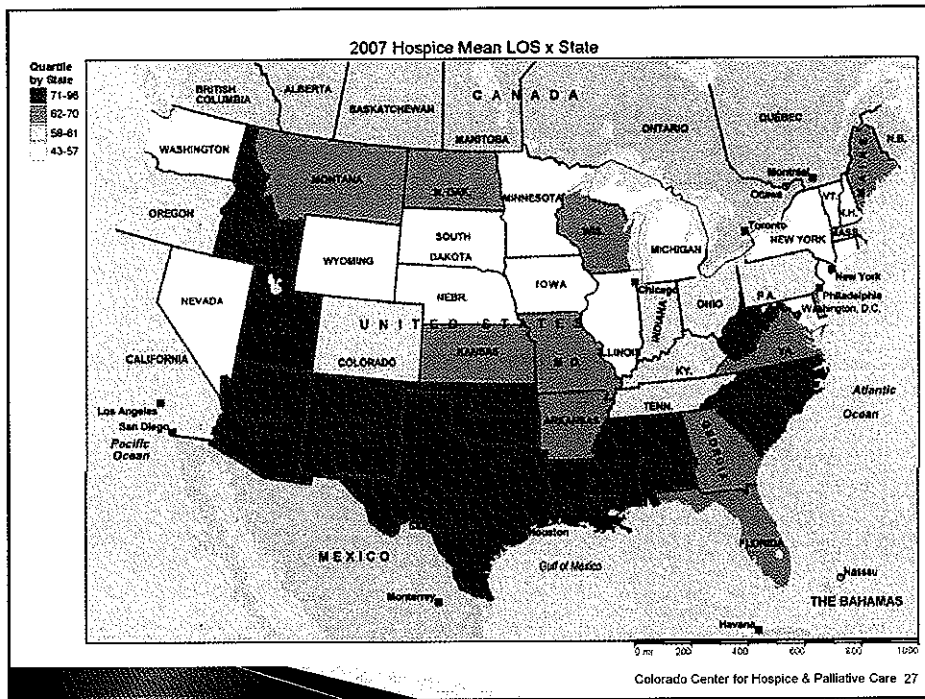
Colorado Center for Hospice & Palliative Care 25

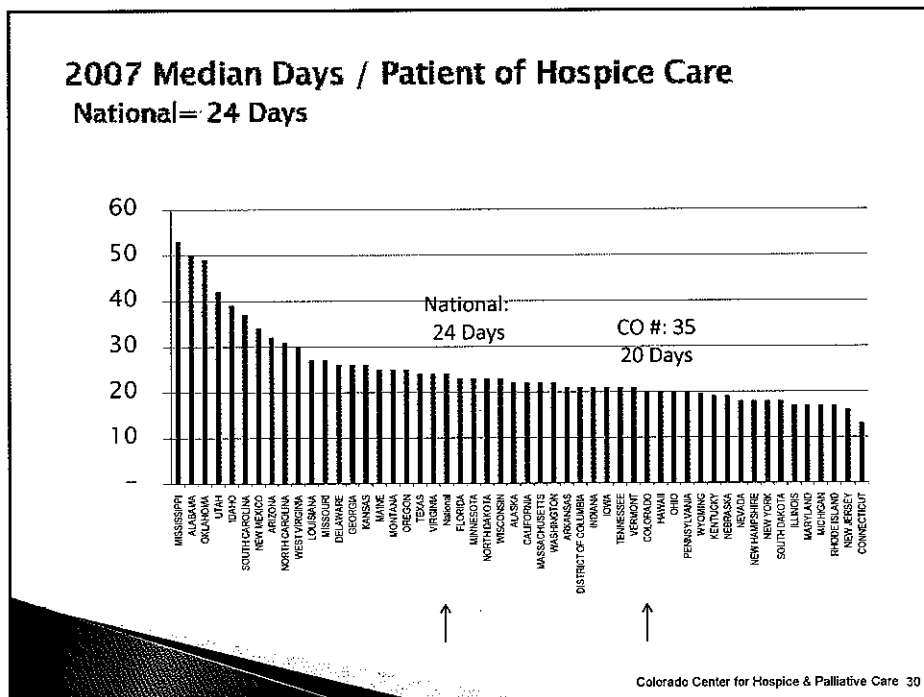
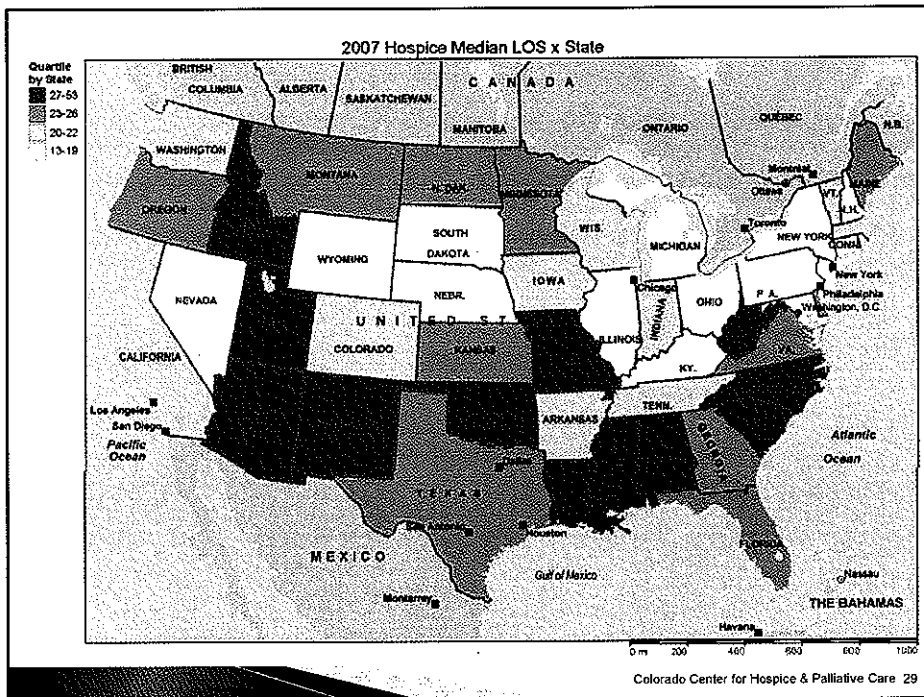
2007 Total Days of Hospice Care

National= 170,490,931 Days



Colorado Center for Hospice & Palliative Care 26





Medicare Reimbursement

Colorado Center for Hospice & Palliative Care 31

2007 Hospice Medicare Reimbursement

	Colorado	National
Total Medicare Payments	\$140,511,111	\$10,338,878,721
Mean Medicare Payments	\$9,374	\$9,721

Colorado Center for Hospice & Palliative Care 32

Questions & Discussion

▶ **Contact Information:**

Cordt T. Kassner, PhD

CEO, Colorado Center for Hospice & Palliative Care

PO Box 50888

Colorado Springs, CO 80949

P: 719-594-9233

E: CKassner@cochpc.org

W: www.cochpc.org