

- CDC – Laboratory Response Network
- USDA – National Animal Health Laboratory Network

**National Animal Health Laboratory Network (NAHLN)**

**Approved Laboratories**

- ▲ American Chemical Society (ACS) Laboratory (1)
- Scripps Institution of Oceanography (SIO)
- Texas A&M University (1)
- University of California (UC) (1)
- University of Florida (1)
- University of Georgia (1)
- University of Illinois (1)
- University of Maryland (1)
- University of Michigan (1)
- University of Minnesota (1)
- University of Missouri (1)
- University of Nebraska (1)
- University of North Carolina (1)
- University of Oklahoma (1)
- University of Oregon (1)
- University of Pennsylvania (1)
- University of Texas (1)
- University of Wisconsin (1)
- University of Wyoming (1)
- National Veterinary Services Laboratories

Approved by USDA and CDC as of 1/1/09. For more information, visit [www.nahln.gov](http://www.nahln.gov)

January 28, 2009

**NATIONAL PROGRAMS**

**CDC/USDA Select Agent Approval** – 8 diseases including Anthrax, Tularemia, Plague, Q Fever, Avian Influenza

**NAHLN/USDA Approval** – 8 diseases including Foot and Mouth Disease, BSE, CWD, Avian Influenza, Vesicular Stomatitis

**State Regulatory Diseases** – including Contagious Equine Malaria (CEM), EIA, Johne's Disease, Equine Herpes, Rabies, West Nile Virus, etc.

**Economically Important Diseases and Disease Outbreaks** – BVD, Salmonella, E. Coli, Melamine, etc.

**Companion Animal Diseases** – infectious diseases, parasites, cancer, etc.

**CURRENT LAB TESTS**

- VTH 5,100 SF
- Necropsy 1,700 SF
- Main Campus 1,200 SF
- Out Buildings
  - Office 4,400 SF
  - Histolab 1,500 SF
  - BSL3 1,100 SF

**Total 15,000 SF**

**CURRENT LAB SPACE**

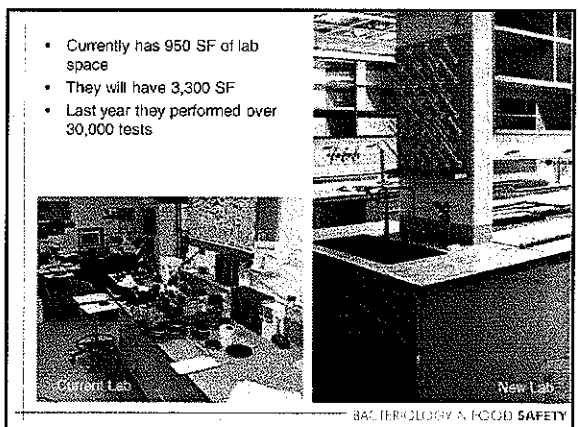
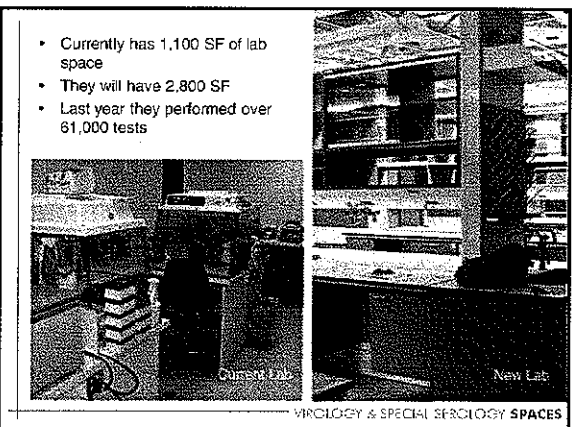
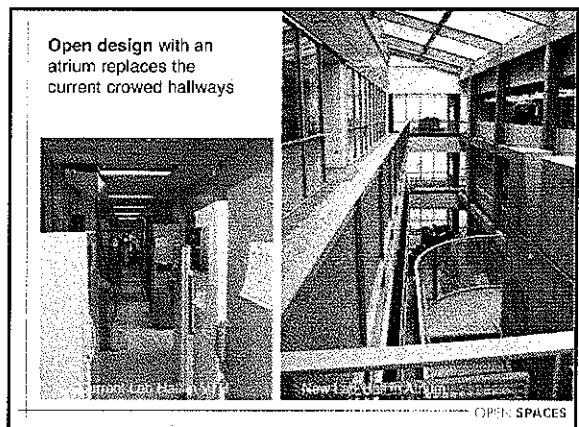
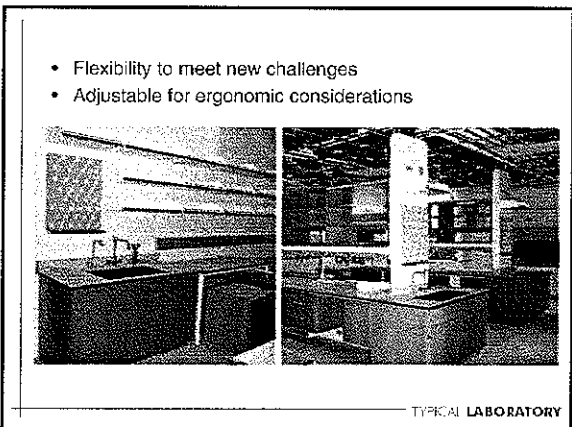
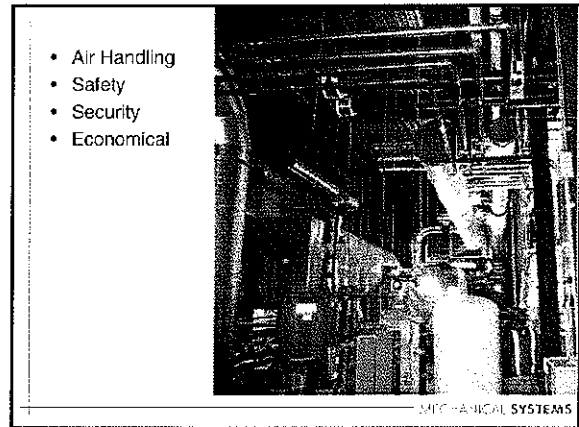
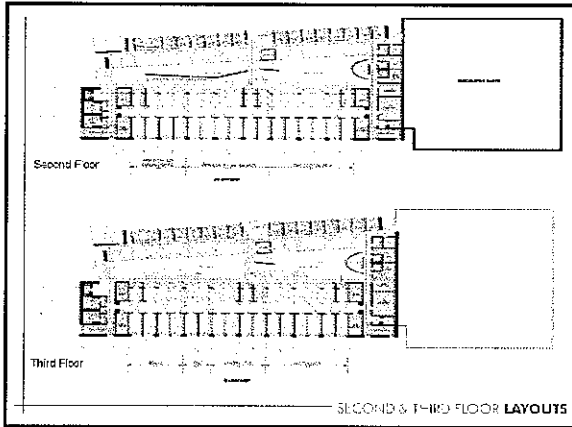
**All Labs and offices in one building**

**DMC BRINGS US TOGETHER**

- Open, Flexible Service Laboratory Space
- Integrate Mandatory 1% Art into building functions
- Collaboration Areas
- Teaching Space
- Research Laboratory Space
- Designed to LEED Rating

**BUILDING CHOICES**

**FIRST FLOOR LAYOUT**



- Currently has 350 SF of lab space
- They will have 1,200 SF
- Last year they performed over 7,200 tests
- PVM students rotate through this section

Current Lab

PARASITOLOGY SPACES

### Chronic Wasting Disease, BSE, Scrapie

- Currently has 400 SF of lab space
- They will have 1,000 SF
- In FY 05-06 performed over 135,000 tests
- Last year they performed over 30,000 tests
- Only Lab in state to perform TSE testing

Current Lab

TSE TESTING

- 15,450 SF Total Dedicated Space
- Necropsy Floor 2,675 SF
- PVM and Pathology Resident Education.

New Space

NECROPSY SPACE

- 1,200 SF Biosecurity Space
- CWD Necropsies
- FAD Suspect Necropsies

BIOSECURITY NECROPSY

### The new DMC will help us meet our Animal Disease Detection & Surveillance Mission

- Animal Health (all species, any disease)
- Food Safety (Salmonella, E. coli, BSE)
- Public Health (Avian Influenza, Rabies, West Nile)
- Economic Impacts (END outbreak in CA)
- Education (Veterinary Workforce Shortage)
- Research (new diagnostic test methodologies)

NEW FACILITY

COHOCO

CVMA

CCA

COPHB

THANK YOU