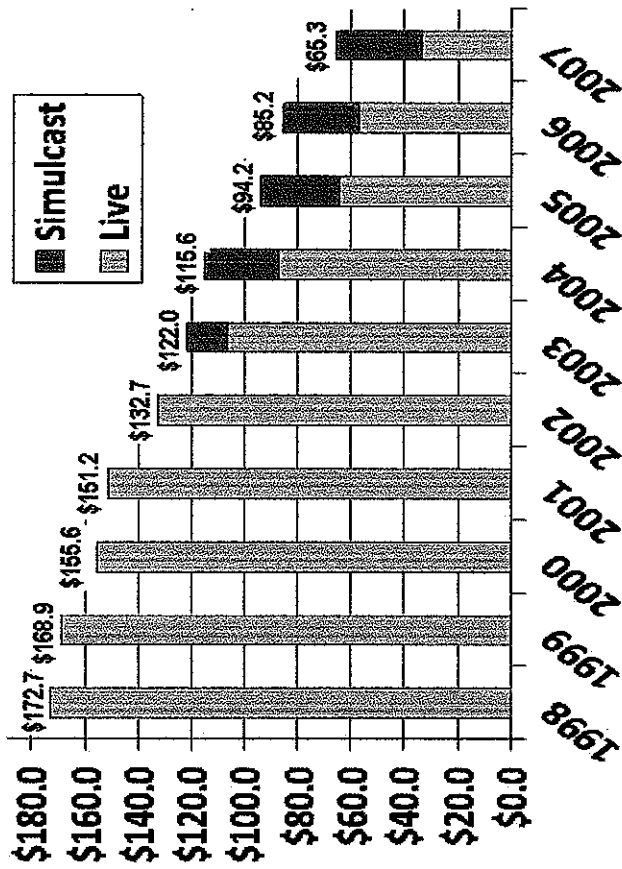


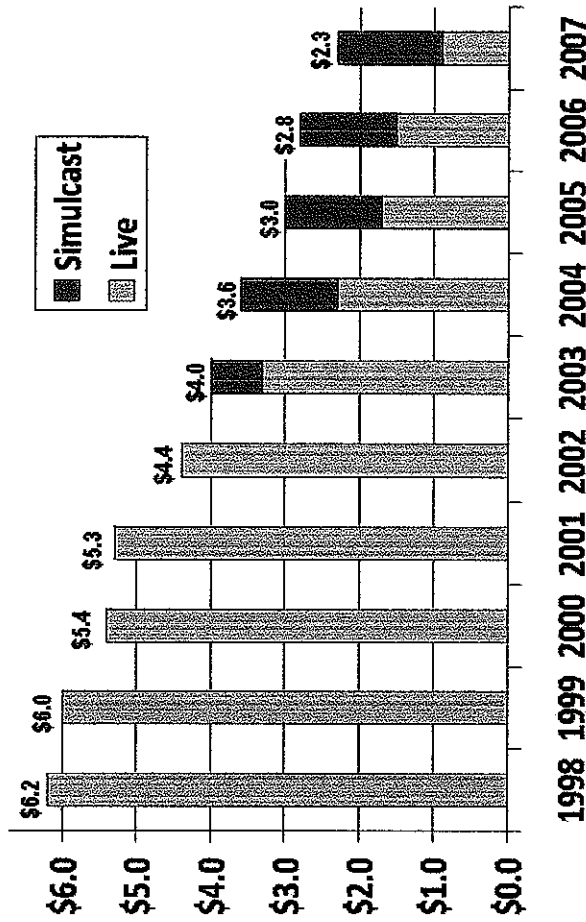
Colorado Greyhound Racing 1998 - 2007

Handle (Betting Amount) In Millions



Total Betting ↓ 62%
 ↑ 80% Live Racing
 ↓ Simulcast now 48% of Total

State Tax Revenue In Millions

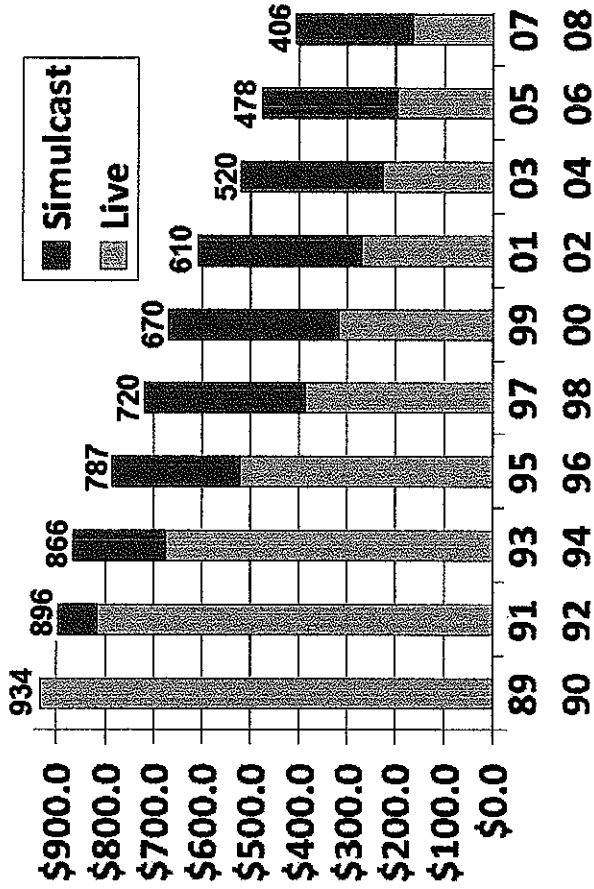


Total Taxes ↓ 56%
 ↑ 85% Live Racing
 ↓ Simulcast now 64% of Total

Source: Colorado Division of Racing Events Annual Reports 1998 – 2007 (no report yet for 2008)

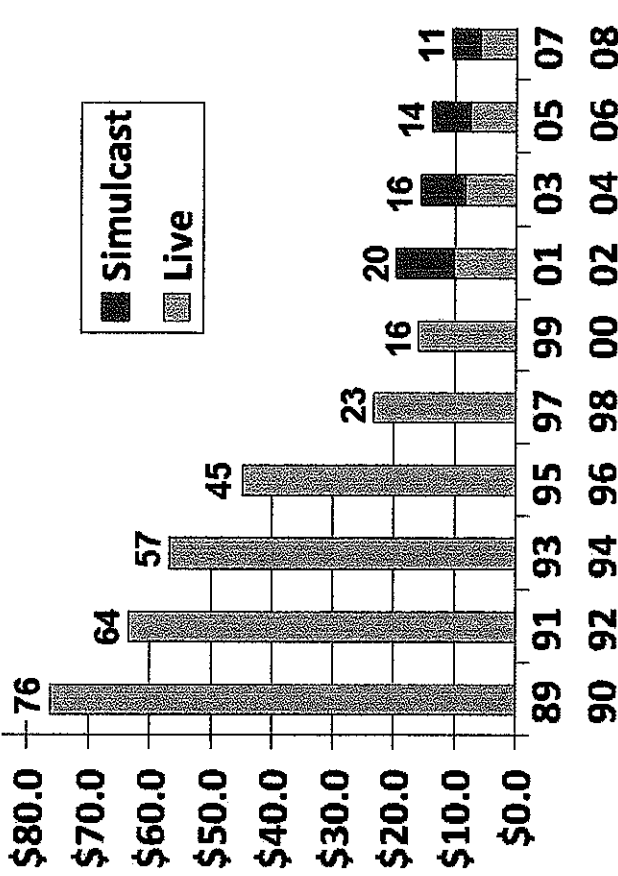
Florida Greyhound Racing 1989 - 2008

Handle (Betting Amount) In Millions



Total Betting ↓ 56%
 ↑ 82% Decline Live Racing
 ↑ Simulcast now 59% of Total

State Tax Revenue In Millions



Total Taxes ↓ 86%
 ↑ 92% Decline Live Racing
 ↓ Simulcast now 45% of Total

Source: Florida Dept. of Business Prof. Regulation Annual Reports 1989 – 2008 (no report yet for 2009)

Note: FL Senate Bill SB 2594 filed on 03/09/2009 decouples simulcast betting from live greyhound racing. If passed it will allow simulcast greyhound betting without requiring live greyhound racing.

USA States with Live Greyhound Racing – March 2009

State	Tracks Closed 2004 on	Tracks Still Live Racing	Time Frame	Past Total Handle \$\$	Recent Total Handle \$\$	Total Betting Handle Trend %	Live Racing Handle \$\$	Live Racing Handle Trend %	Simulcast % of Total Handle \$\$
Alabama – Birmingham*		1	2000 - 2008	2000 – \$70.6m	2008 – \$39.9m	Down 43%	2008 – \$13.9m	Down 51%	2008 – 65%
Alabama – Mobile*		1	No data provided					No data provided	
Alabama – Macon*		1	No data provided					No data provided	
Arizona	1		1998 - 2008	1998 – \$129m	2008 – \$67.7m	Down 47%	2008 – \$22.2m	Down 51%	2008 – 67%
Arkansas		1	2003 - 2008	2003 – \$94.3m	2008 – \$65m	Down 31%	2008 – \$24.3m	Down 40%	2008 – 63%
Florida	3	13	1989 - 2008	1989 – \$933.8m	2008 – \$406.3m	Down 56%	2008 – \$166.5m	Down 82%	2008 – 59%
Iowa		2	1998 - 2006	1998 – \$221.5m	2006 – \$54.2m	Down 76%	2006 – \$8m	Down 96%	2006 – 85%
New Hampshire	1	2	1988 - 2007	1988 – \$109m	2007 – \$40m	Down 63%	2007 – \$4.4m	Down 96%	2007 – 89%
Rhode Island		1	1991 - 2000	1991 – \$136.3m	2000 – \$31.5m	Down 77%	No data provided	No data provided	No data provided
Texas	2	2	2003 - 2008	2003 – \$135.5m	2008 – \$55m	Down 59%	2008 – \$14.9m	Down 65%	2008 – 73%
West Virginia		2	2001 - 2008	2001 – \$114.7m	2008 – \$97.5m	Down 15%	2008 – \$28.2m	Down 63%	2008 – 71%
Wisconsin	1	1	1994 - 2005	1994 – \$199.5m	2005 – \$39m	Down 80%	2005 – \$24.7m	Down 88%	2005 – 37%
Massachusetts+	2 will close by 2010	None by 2010	2005 - 2007	2005 – \$179.2m	2007 – \$150.7m	Down 16%	2007 – \$26.6m	Down 21%	2007 – 82%

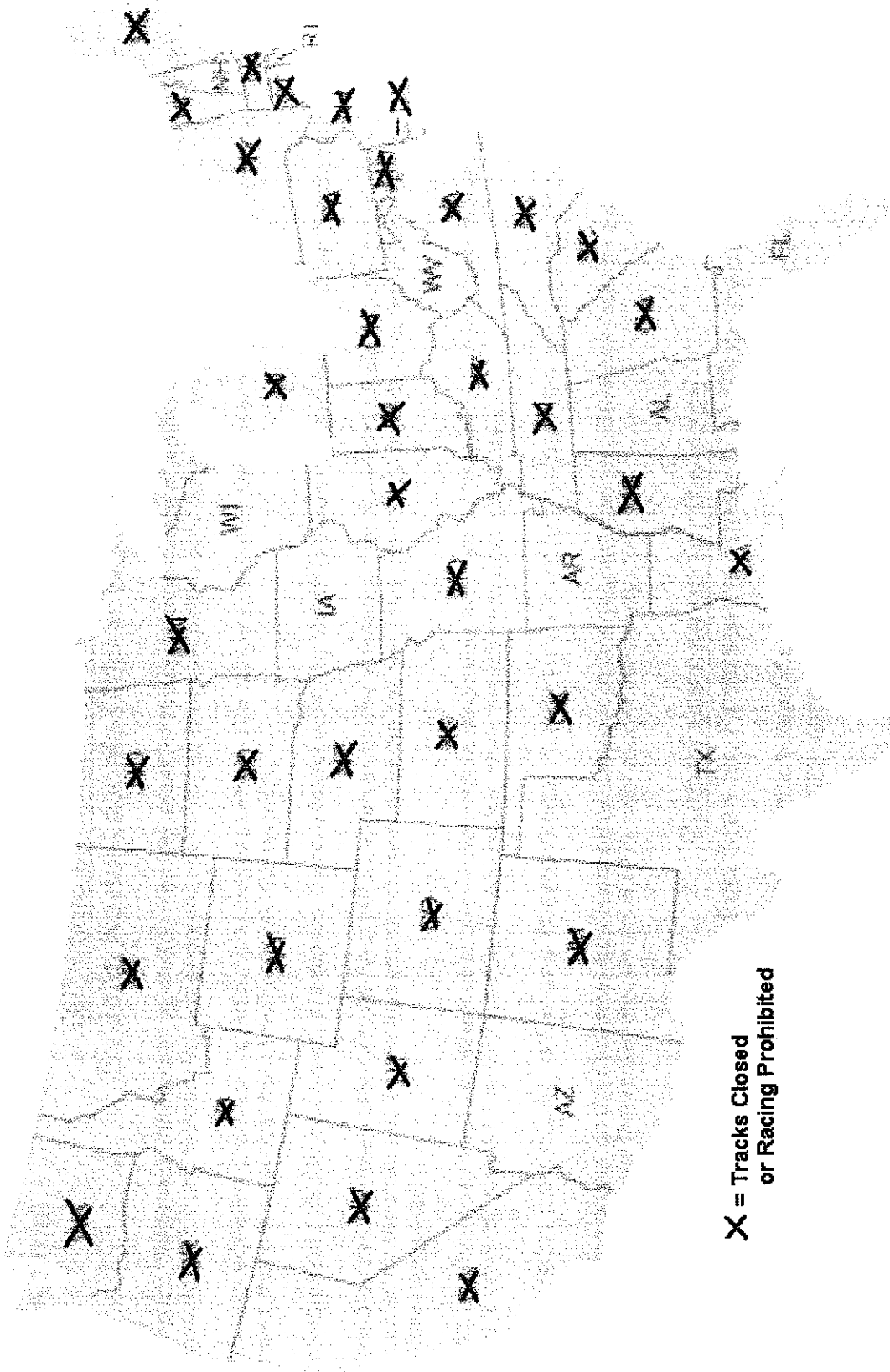
*Note – Alabama Greyhound Racing is controlled by 3 different Commissions, 1 for each track, so no summary total for the state as a whole.

+Note – Massachusetts voters overwhelmingly passed a ballot initiative in Nov. 2008 that ends dog racing by 2010.

Other states of interest beyond the Live Greyhound Racing States:

- Oregon - Last track closed in 2004
- Connecticut - 100% of tracks closed during 2005 and 2006 – last 2 tracks
- Colorado - 100% of tracks closed during 2006 and 2008 – last 2 tracks
- Kansas - 100% of tracks closed during 2007 and 2008 – last 2 tracks

USA Live Greyhound Racing In Decline (As of February 2009)



X = Tracks Closed
or Racing Prohibited

**30% of Tracks Nationwide Have Closed in the Last Four Years
(14 Tracks have closed since 2004)**

Source: GREY2K USA

Quotes From

Saturday could be last day of live dog racing in Colorado by Aaron J. Lopez, Rocky Mtn News Jun. 23, 2008 :

"...Barring an 11th hour agreement between the owners of Mile High Greyhound Park and the Colorado Greyhound Kennel Association, Saturday will mark the final day of the 2008 live racing season.

if and when the dogs return to run in Colorado is anyone's guess.

"I never thought I'd see the day they would go," said Morris, her voice choking with emotion. "You have to try to be upbeat when I'm in there talking to them. . . . It's just devastating."

Track officials are planning to open for racing again next April, but some kennel operators are preparing to close shop for good, while others are in the process of moving their dogs to others state.

Few are optimistic about returning in 2009...."

"... Officials at Mile High Racing and Entertainment paint a different picture, saying a sagging economy, Denver's competitive marketplace and mountain gambling have taken their toll.

They point to the closing of Cloverleaf Kennel Club, which called off the dogs at the end of 2006. The Loveland track went under after 51 year of live racing...."

"... Mile High general manager Bruce Seymore said the track lost \$700,000 in 2007 after being profitable in 2006. Among the primary expenses was the estimated \$25,000 to \$40,000 per month cost to heat the track...."

"...CGKA [Colorado Greyhound Kennel Association] vice president Gary Bryan is a retired schoolteacher who has been racing greyhounds for the past 24 years...."

He estimates that three-fourths of the association's members are losing money. Many of them could not survive a four-month winter layoff because the cost to feed and care for the dogs can run between \$2,000 and \$3,500 per week...."

Slow Times for Dog's Fast Tracks by Terry Frei, Denver Post August 16, 2007 :

"...On Saturday night in 2007 a total of \$110,827 was wagered on Mile High's 12-race card. On the Saturday night card for Aug. 16, 1980, Mile High's mutuel handle was \$558,704. The track no longer announces attendance (on Monday, about 300-400 fans showed up); the attendance for that night in 1980 was 6,810..."