

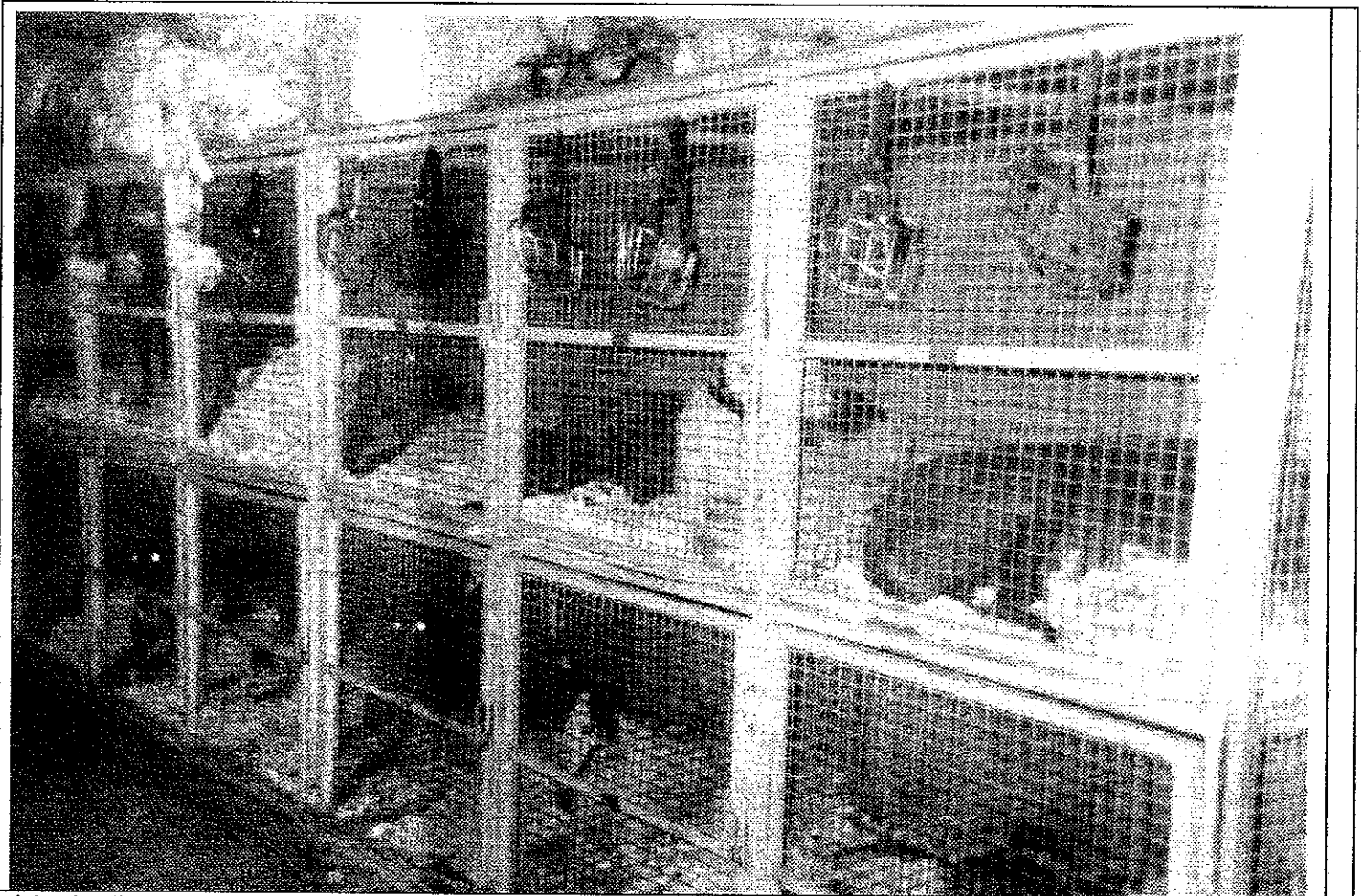
Cages of Confinement



DID YOU KNOW ?

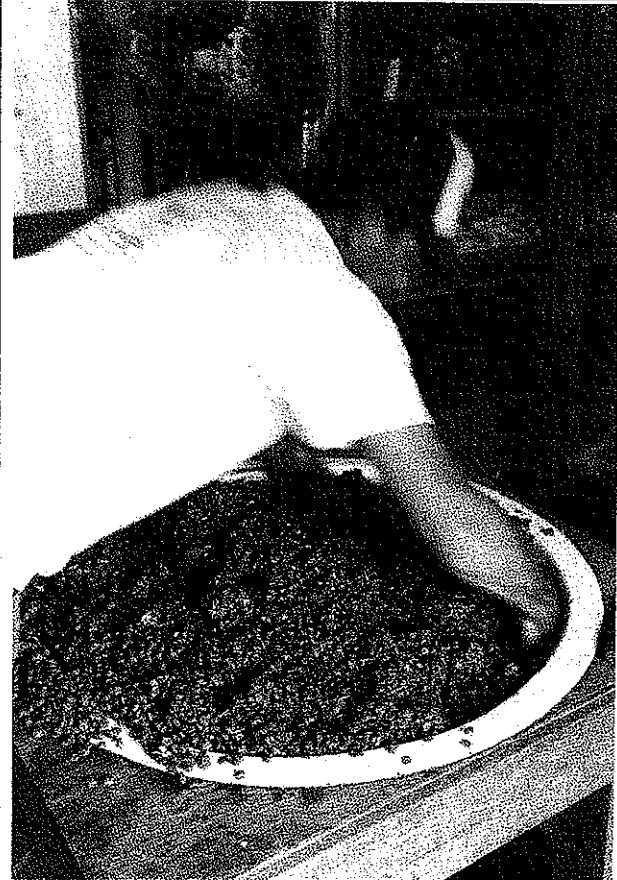
The dogs endure lives in **CAGES OF CONFINEMENT**. They are kept in warehouse style kennels up to 20 hours a day with barely enough room to stand up and turn around in. This confinement is documented (to the left) when I took this picture at Cloverleaf Greyhound Park in 2008. The Colorado Dept. Revenue, Div. Racing, states the minimum size for cages in Colorado is 29 by 40 by 29 inches, cages that a large greyhound would be unable to stand up in.

Cloverleaf Racetrack Park Auction in 2008



Adopting Racing Greyhound book by Cynthia A. Branigan

**Greyhound Track Food
Dead, Dying, Diseased or Downed Raw Animal Meat
Not Fit For Human Consumption**



DID YOU KNOW ?

The standard industry dog food for racing greyhounds is 4D raw meat from diseased livestock. The 4D meat is raw meat from dead, dying, diseased or downed animals. The advantages of 4D to the trainer are availability and price. The USDA deems this food unfit for human consumption.

Adopting Racing Greyhound book by Cynthia A. Branigan

Greyhound Suffering and Injuries



DID YOU KNOW ?

Every year greyhounds suffer serious and horrific injuries at the track such as broken bones, hips, shoulders and hocks, as well as lure death, electrocution, heat stroke, etc. The Colorado Dept. of Revenue, Div. Racing, states that between 1993 and 2007 there were two thousand six hundred thirty seven (2,637) greyhound injuries at our Colorado racetracks!

On a personal note, I witnessed firsthand one of these horrific injuries. A year ago on my birthday I decided—for the novelty of it all-- to go visit the Mile High Racetrack. I was there for the matinee program. I went in with my husband and an open mind wondering what it was really like to see live racing instead of just hearing about it. The first two races I saw were uneventful but the third race was much different. On the first left turn out of the gate the dogs seemed to get clustered together, then ended up colliding with each other with one dog in particular getting trampled on by the others before it veered off to the right and slammed into the perimeter. I had heard these horrific injuries do happen and here it was right in front of my eyes at Mile High on my first visit to the track! This certainly convinced me there is tragedy in greyhound racing. I witnessed it for myself so now I know it's true.

WHENEVER ANIMALS ARE
USED IN MONEY MAKING
VENTURES, THE ANIMALS

LOSE -
SOMETIMES WITH
HAIR LIMBS,
SOMETIMES WITH
HAIR LIVES.





