










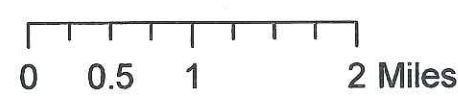
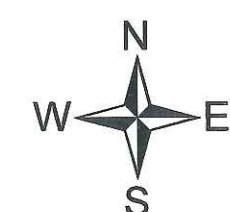
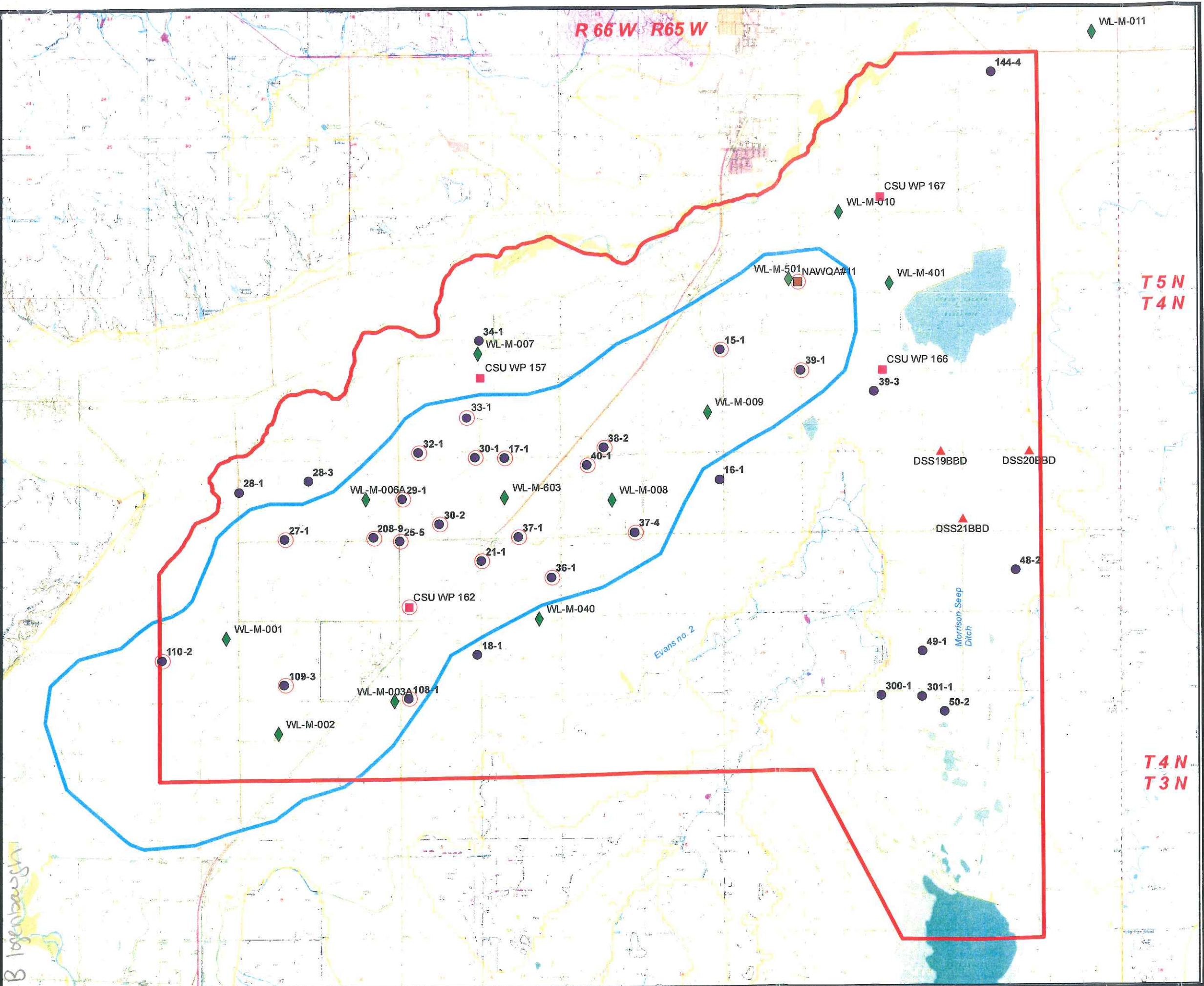


State of Colorado  
 Division of Water Resources  
**La Salle/Gilcrest  
 Study Area  
 Water Level Trends**

-  +5 ft Change in WL pre 2004/post 2006
-  CSU wells
-  DWR monitoring wells
-  CCWCD Monitoring Wells
-  USGS Active monitoring sites
-  CDA monitoring sites
-  Study boundary
-  Area of Wells with a WL change
-  Extent of Alluvium
-  Canal/Ditch
-  Stream/River

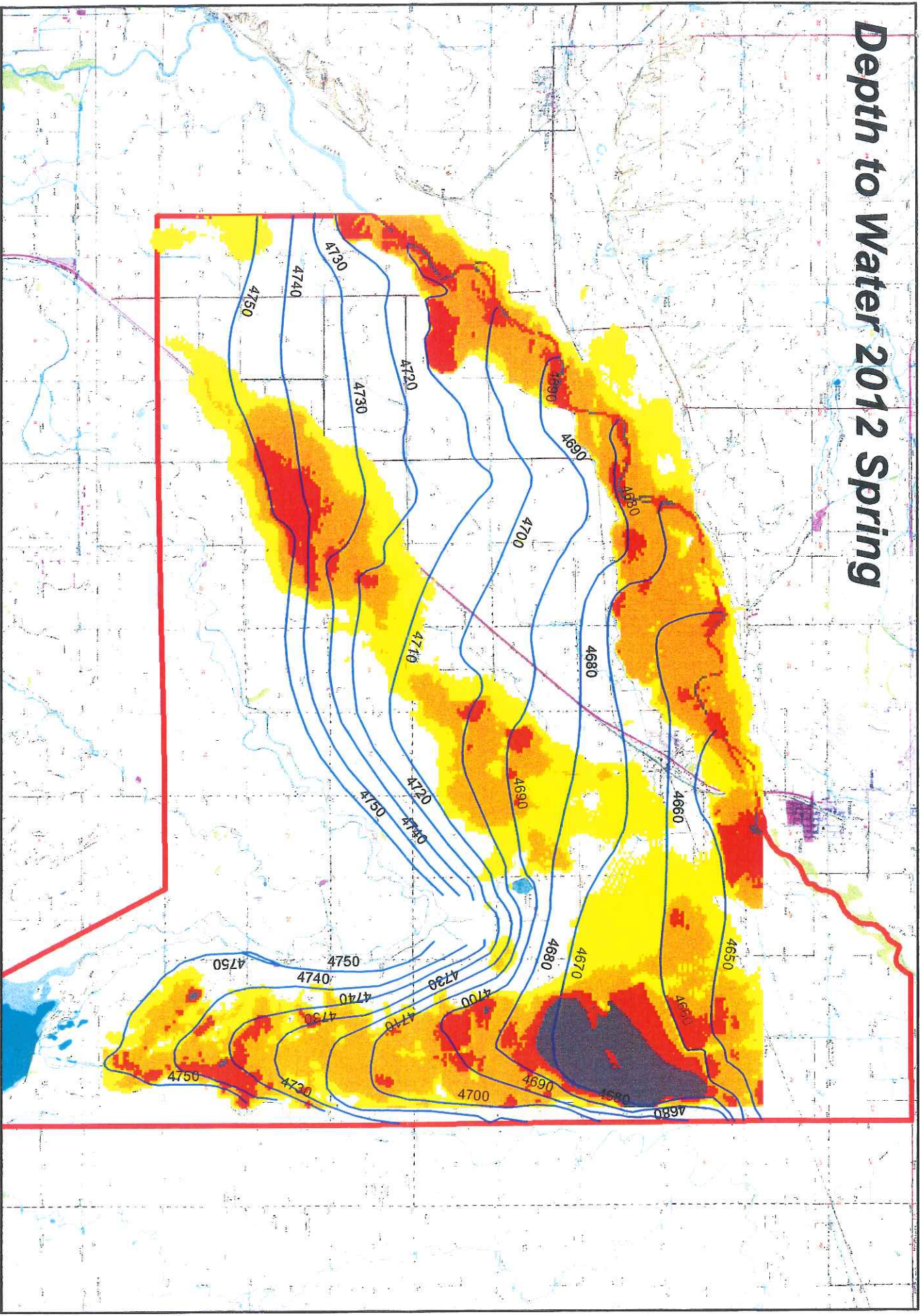


Printed July 2013

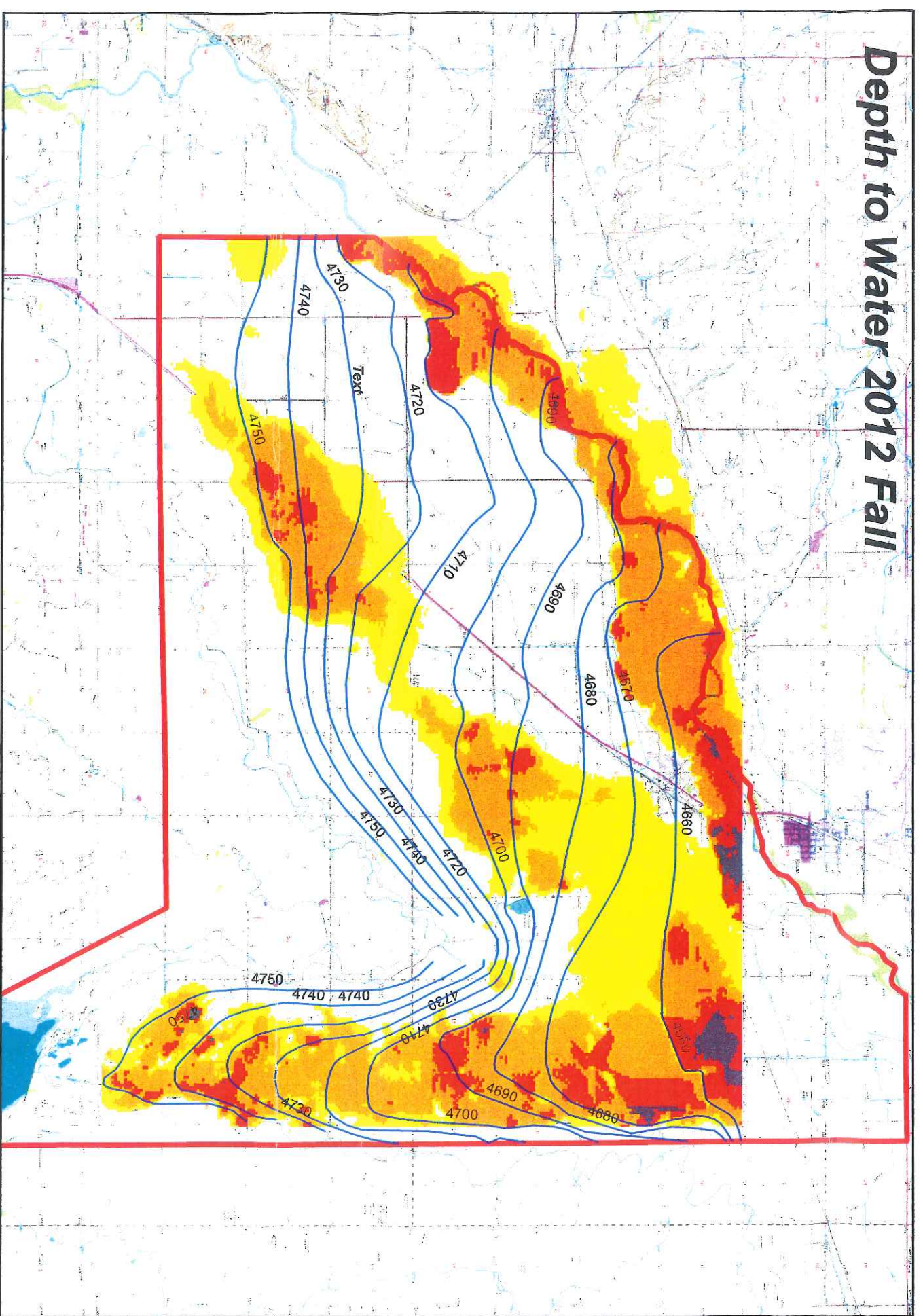


B logentbach

# Depth to Water 2012 Spring



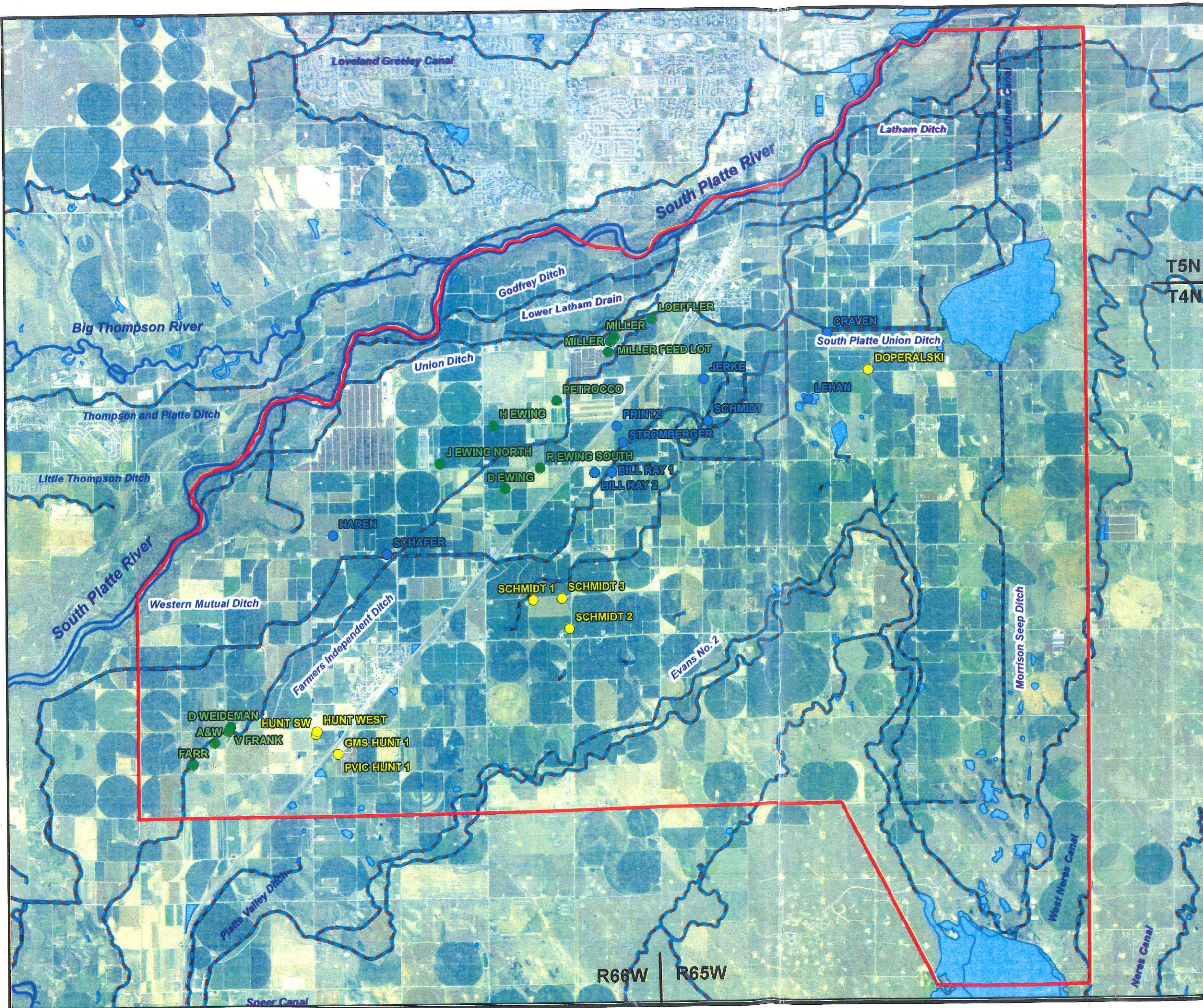
# Depth to Water 2012 Fall



**LaSalle/Gilcrest**  
**Study Area**  
 1:100,000  
 0 0.306 1.2 1.8 2.4 Miles

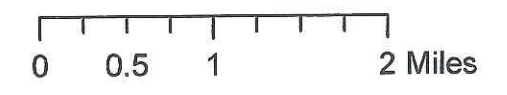
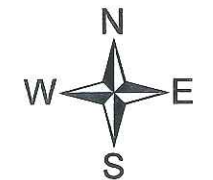
DTW 2012 Fall  
 Water Level Elevation Contour (10ft)  
 0-5  
 0.5-5 } < 5 ft  
 5-10  
 10-15  
 15+

# LaSalle/Gilcrest High Groundwater Investigation



### Map Key

- Study Boundary
- Reservoirs/Lakes/Ponds
- Rivers
- Ditches and Canals
- Recharge Pond by Ditch System**
  - Western Mutual Ditch
  - Evans No. 2 Ditch
  - Farmers Independent Ditch



Printed August 15, 2014

Author: RT  
NAD 1983 UTM Zone 13N  
Transverse Mercator  
North American 1983  
Scale 1:70,000