

Senate Bill 15-224

3/26/2015

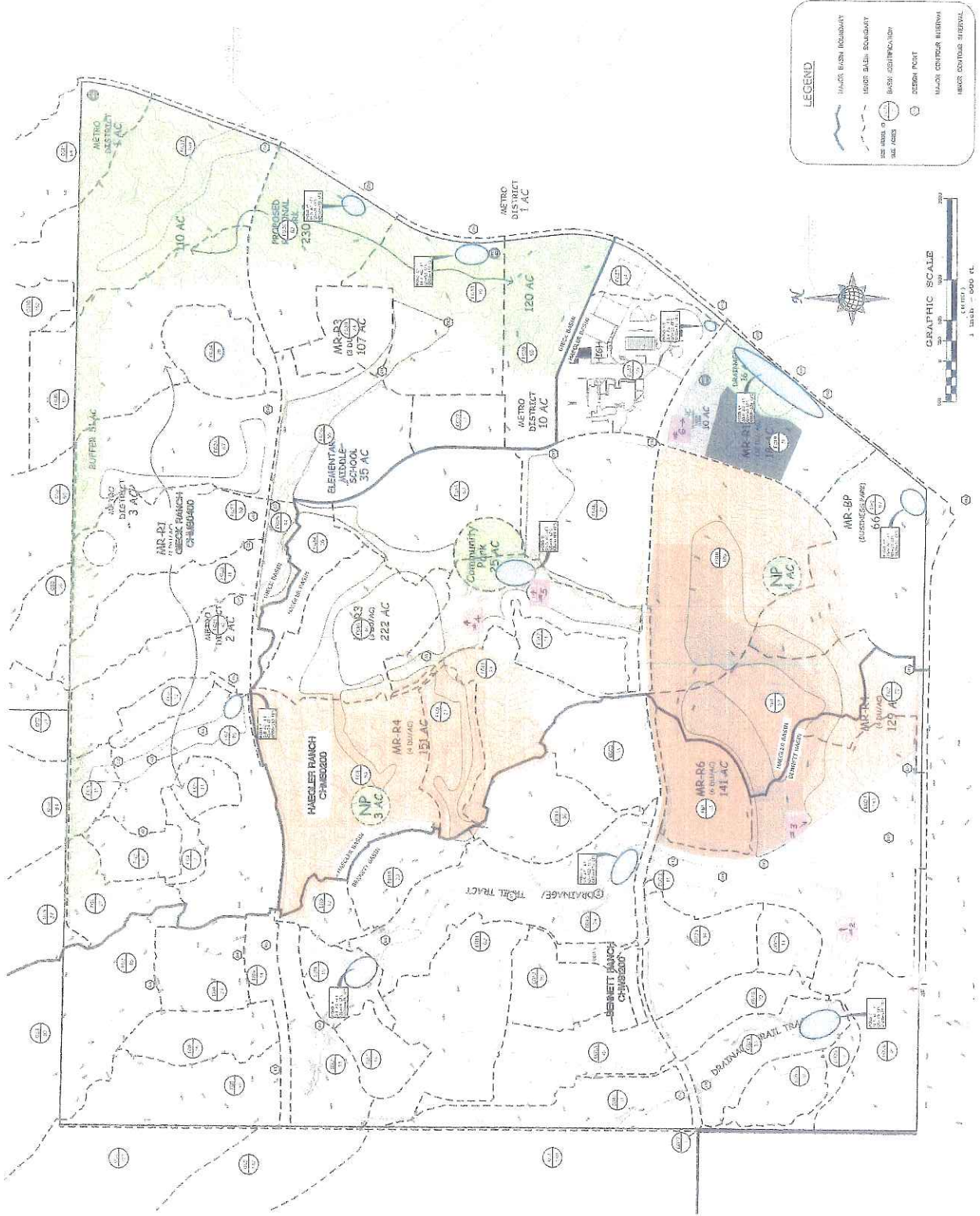
Senate Ag Committee Hearing

List of Handouts for Longenbaugh's Testimony

Sheet #	Description
1	Meridian Ranch Subdivision Map - Location of Drain Recharge Galleries in Pink; 6 of them
2	Cross Section of typical Recharge structure
3	Cross section of typical field installation - predevelopment
4	Cross section of typical field installation - after development
5	Picture for drain line #2
6	Picture of water in stream channel, drain #2
7	Picture of outlet - drain line #6
8	Picture of outflow from drain line #6
9	Picture of drain #6 outflow from land surface about 150 feet south of structure.

MASTER DEVELOPMENT DRAINAGE PLAN MERIDIAN RANCH

#1



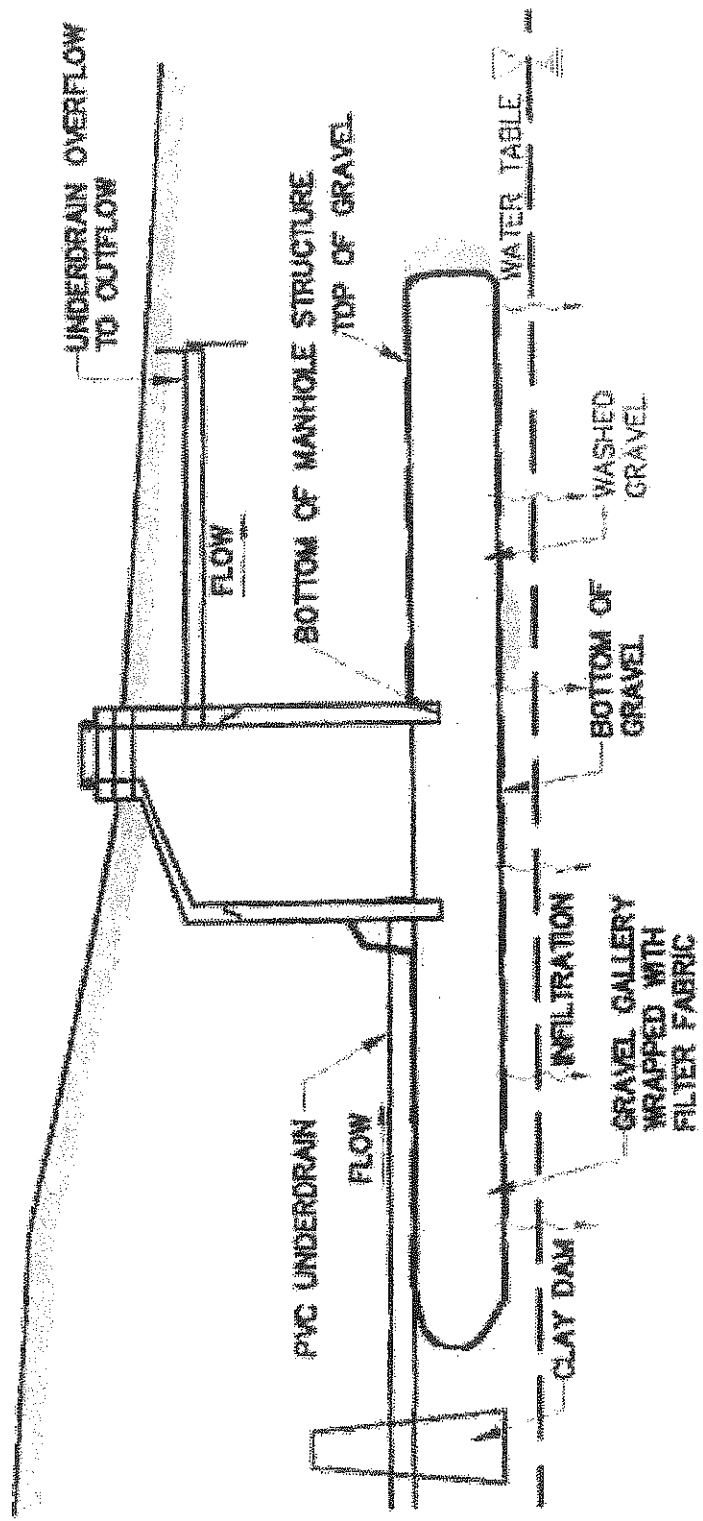
TECH CONTRACTORS
10305 ANGELES ROAD
FALCON, CO 80831
TEL: 303.444.4444
FAX: 303.444.4444

FIGURE 7

MAY 2012

DEVELOPED CONDITIONS - SCS MAP

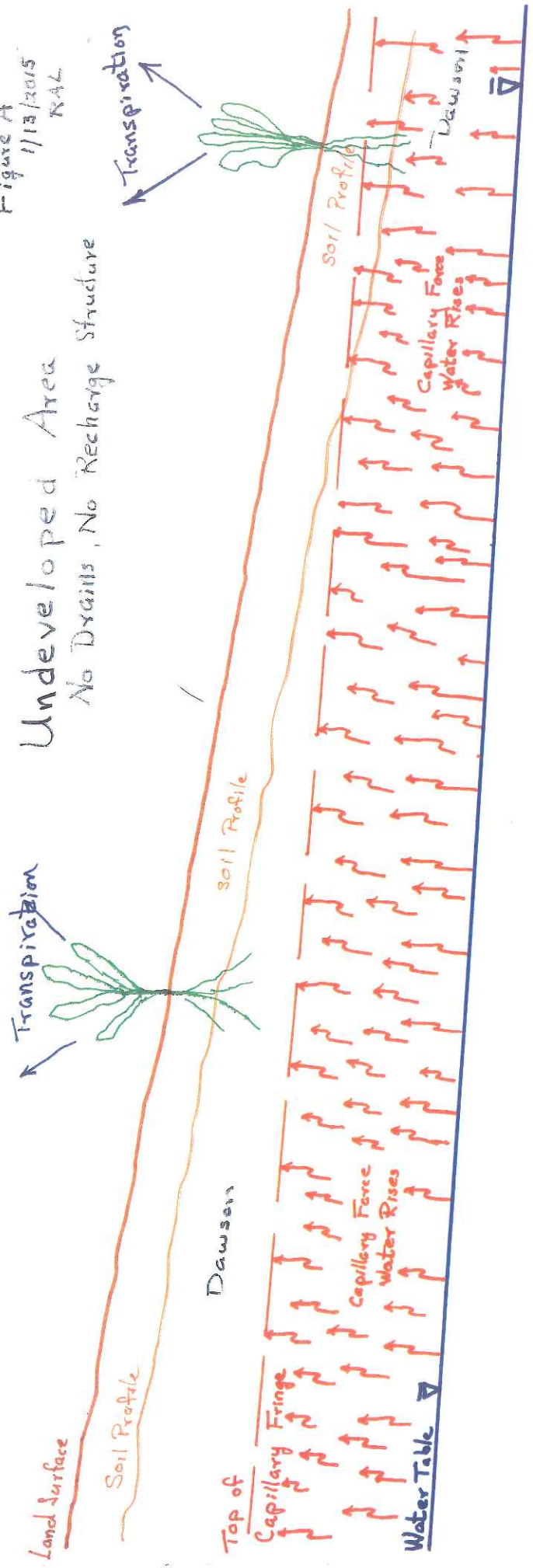
NOTE: THE DRAINAGE PLAN IS BASED ON THE DATA PROVIDED BY THE CLIENT. THE CLIENT IS RESPONSIBLE FOR THE ACCURACY OF THE DATA. THE DRAINAGE PLAN IS NOT A GUARANTEE OF PERFORMANCE. THE DRAINAGE PLAN IS NOT A GUARANTEE OF RESULTS. THE DRAINAGE PLAN IS NOT A GUARANTEE OF LIABILITY. THE DRAINAGE PLAN IS NOT A GUARANTEE OF ANY OTHER MATTER. THE DRAINAGE PLAN IS NOT A GUARANTEE OF ANY OTHER MATTER.



#2

Figure A
1/13/2015
RAL

Undeveloped Area
No Drains, No Recharge Structure



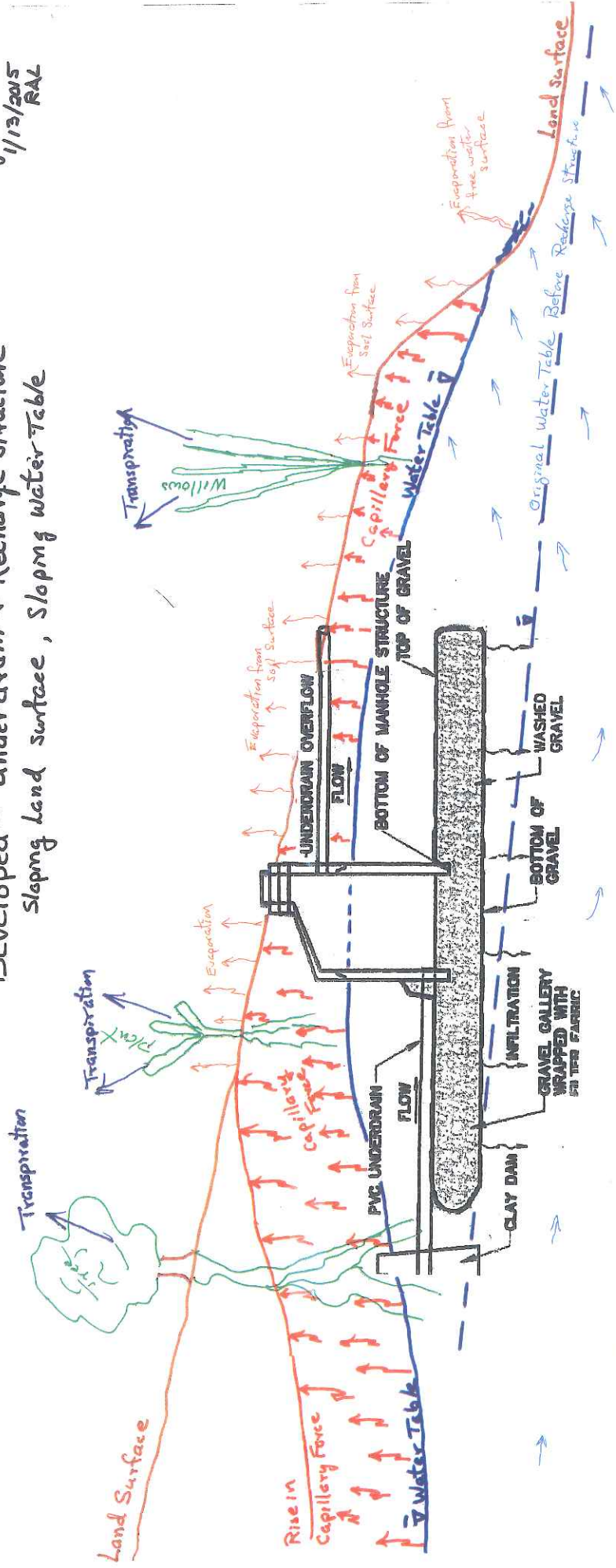
Dawson Formation



Denver Formation

Figure C
01/13/2015
RAL

Developed - Underdrain + Recharge Structure
Sloping Land surface, Sloping water Table

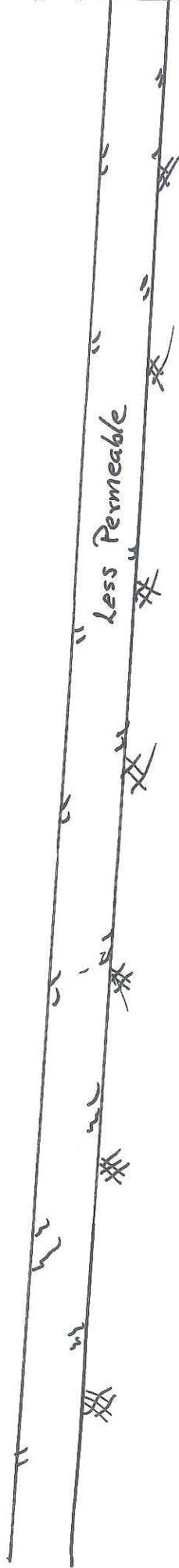


4.

Dawson Formation

Less Permeable

Denver Formation



#2 2/24/2014

#5



6

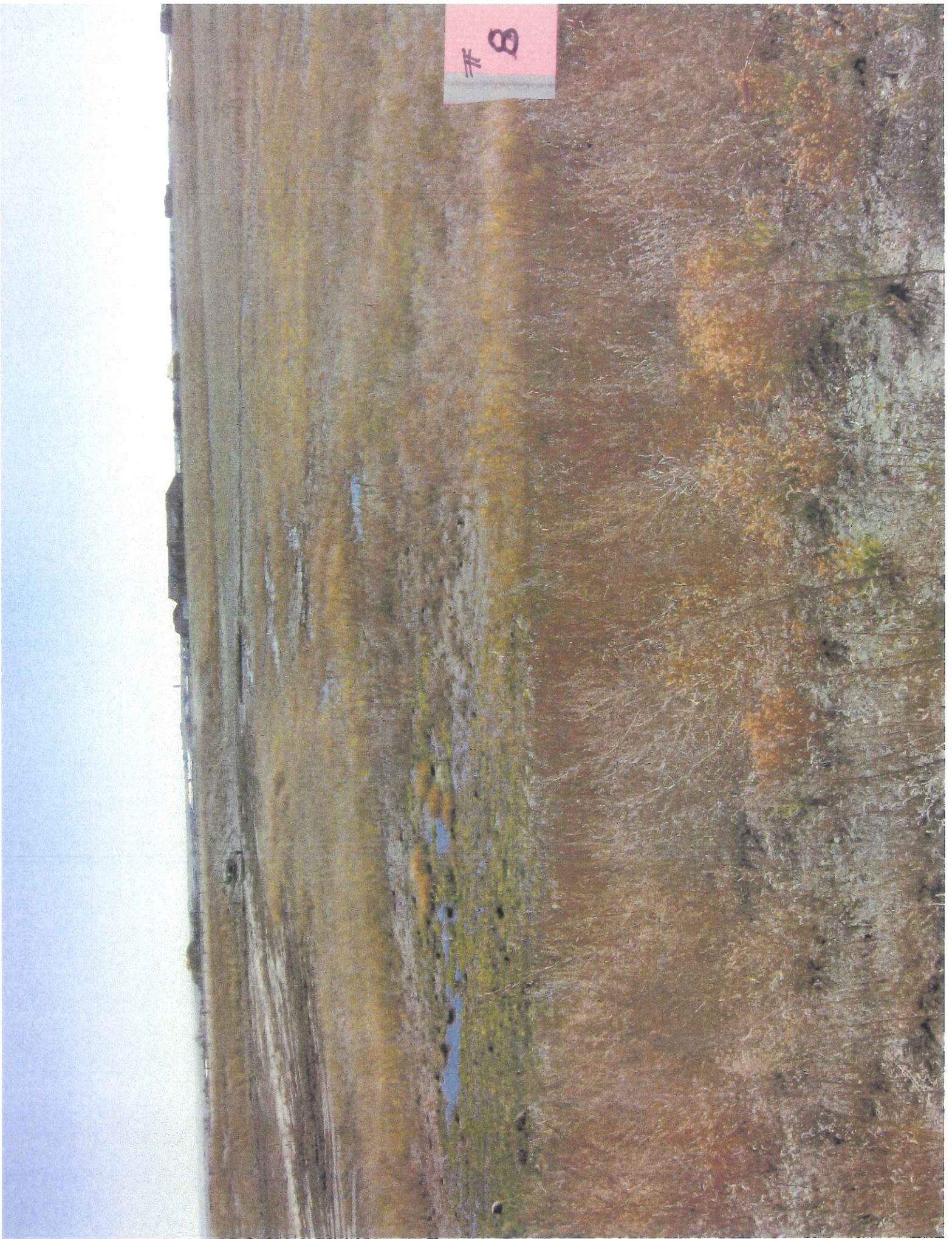
#2 2/24/2014



#7



8





#9

#6
18/11

#6 12/8/2014

9

GA