

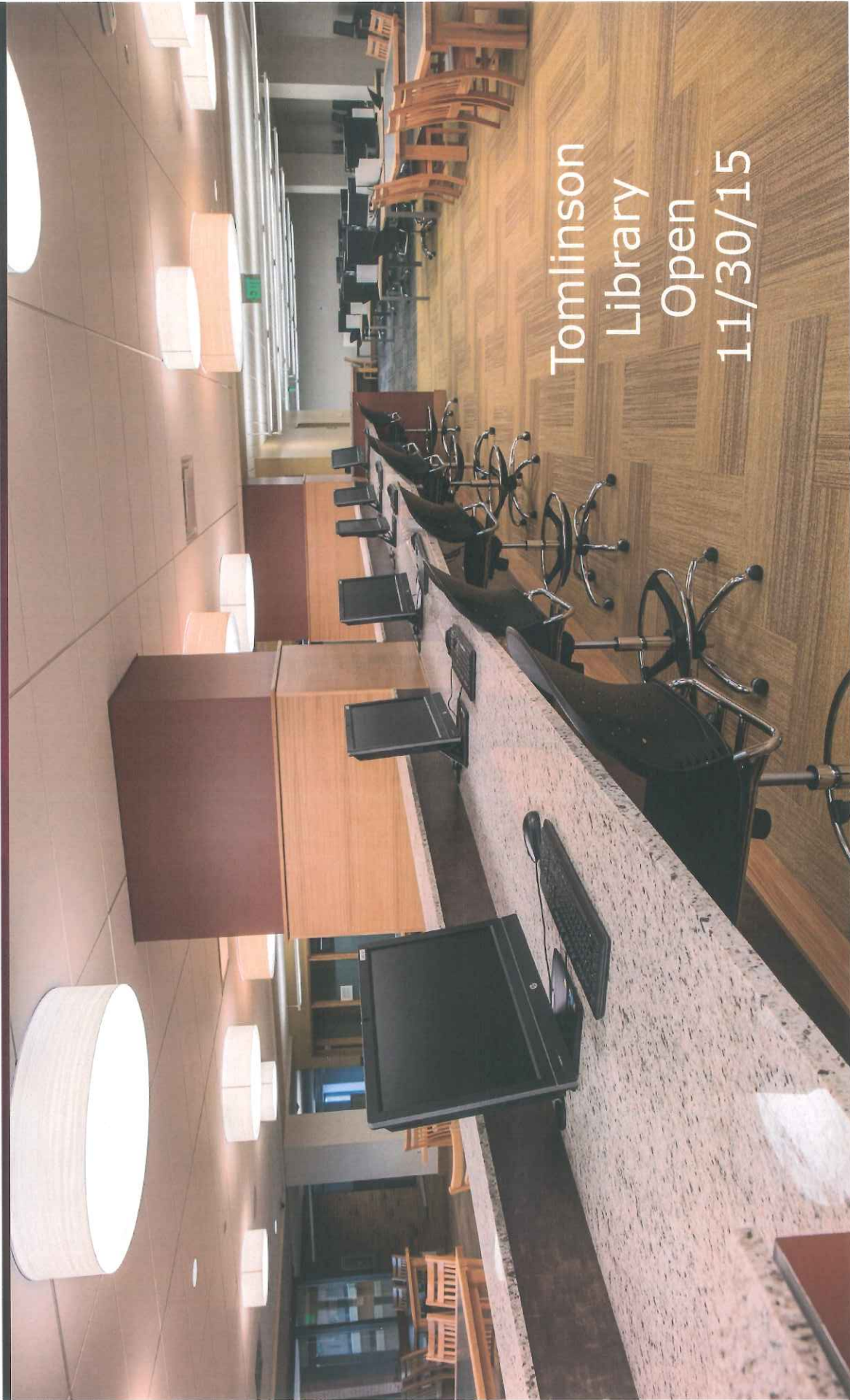


# COLORADO MESA UNIVERSITY

Capital Development Committee

December 14, 2015

First, Thank You!



Tomlinson  
Library  
Open  
11/30/15

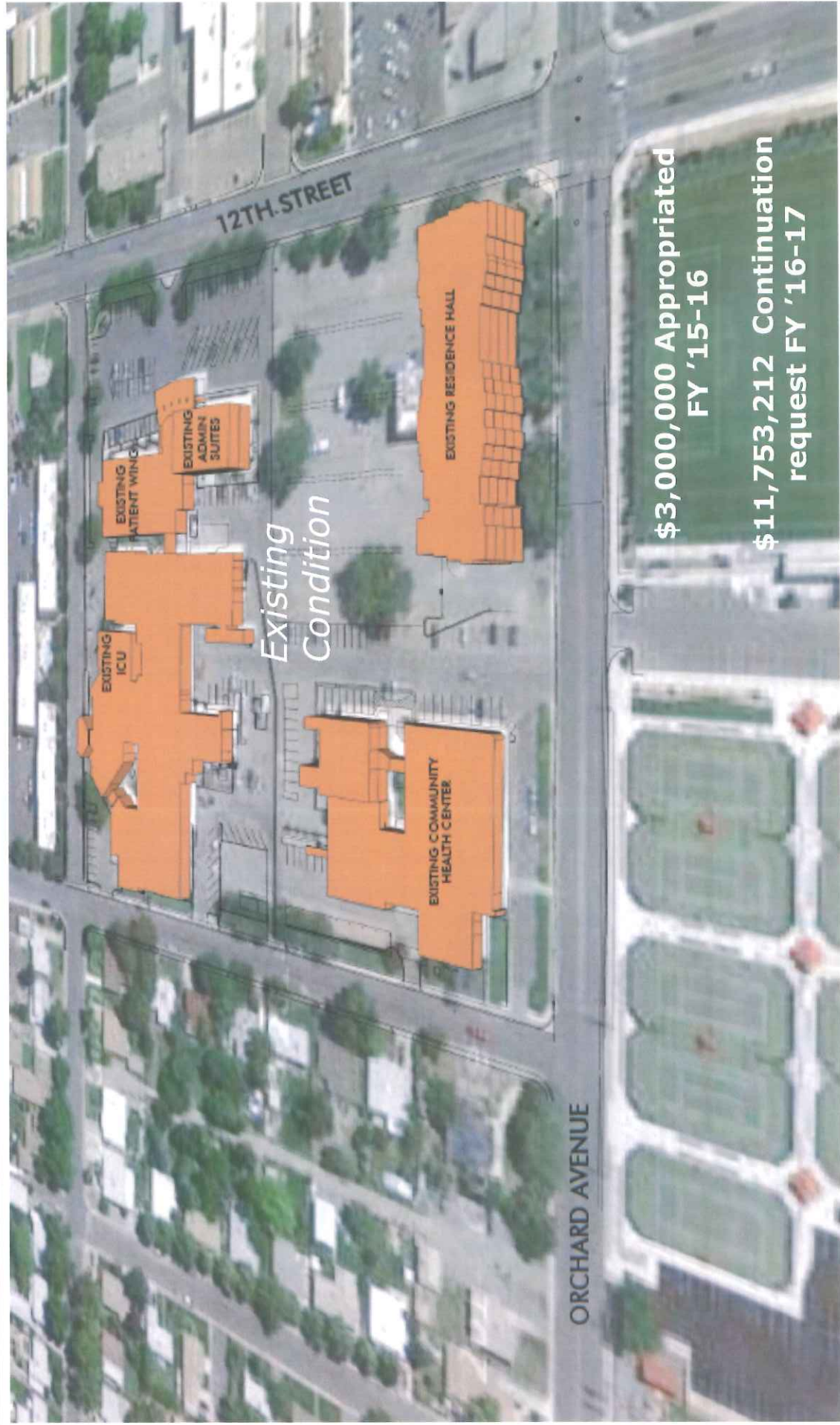
COLORADO MESA  
UNIVERSITY

# CURRENT PROJECTS UPDATE

COLORADO MESA  
UNIVERSITY



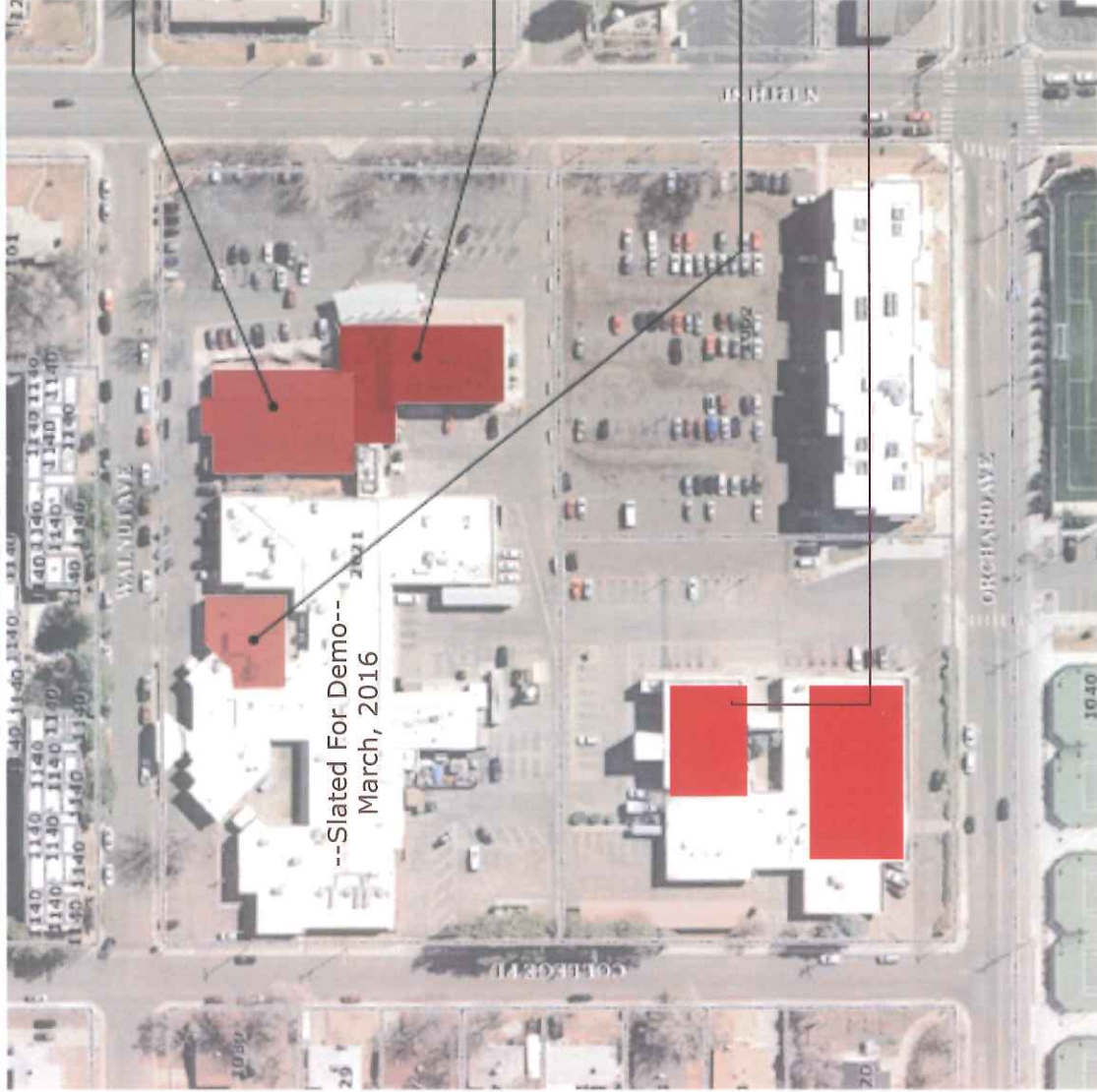
# Health Sciences Project Underway



COLORADO MESA  
UNIVERSITY



# Full Speed Ahead: Maximizing Resources



## Spaces Identified for Re-Use

### **Patient Wing**

- \* 8,300 sq. ft
- \* Design, Sampling & Testing Underway

### **Two Story Admin Building**

- \* 12,700 sq. ft. total
- \* Second Floor Remodel Begins January, 2016

### **Intensive Care Unit**

- \* 3,200 sq. ft. total
- \* Design, Sampling & Testing Underway

### **Pharmacy Building Remodel**

- \* Behavioral Health Clinic
- \* Campus Police Substation
- \* Faculty Offices
- \* Performing Arts (Marching Band)
- \* Health Sciences Simulation Labs (complete)

--Slated For Demo--  
March, 2016

# Health Sciences Campus Planning



COLORADO MESA  
UNIVERSITY



# Health Sciences Campus Planning

10

The Courtyard Option is a single story addition to the existing facilities that provides a generous building forecourt as well as an enclosed green space that could be accessible from interior building spaces.



COLORADO MESA  
UNIVERSITY

# A Unique Partnership



\*Bachelor of Science in  
Mechanical Engineering

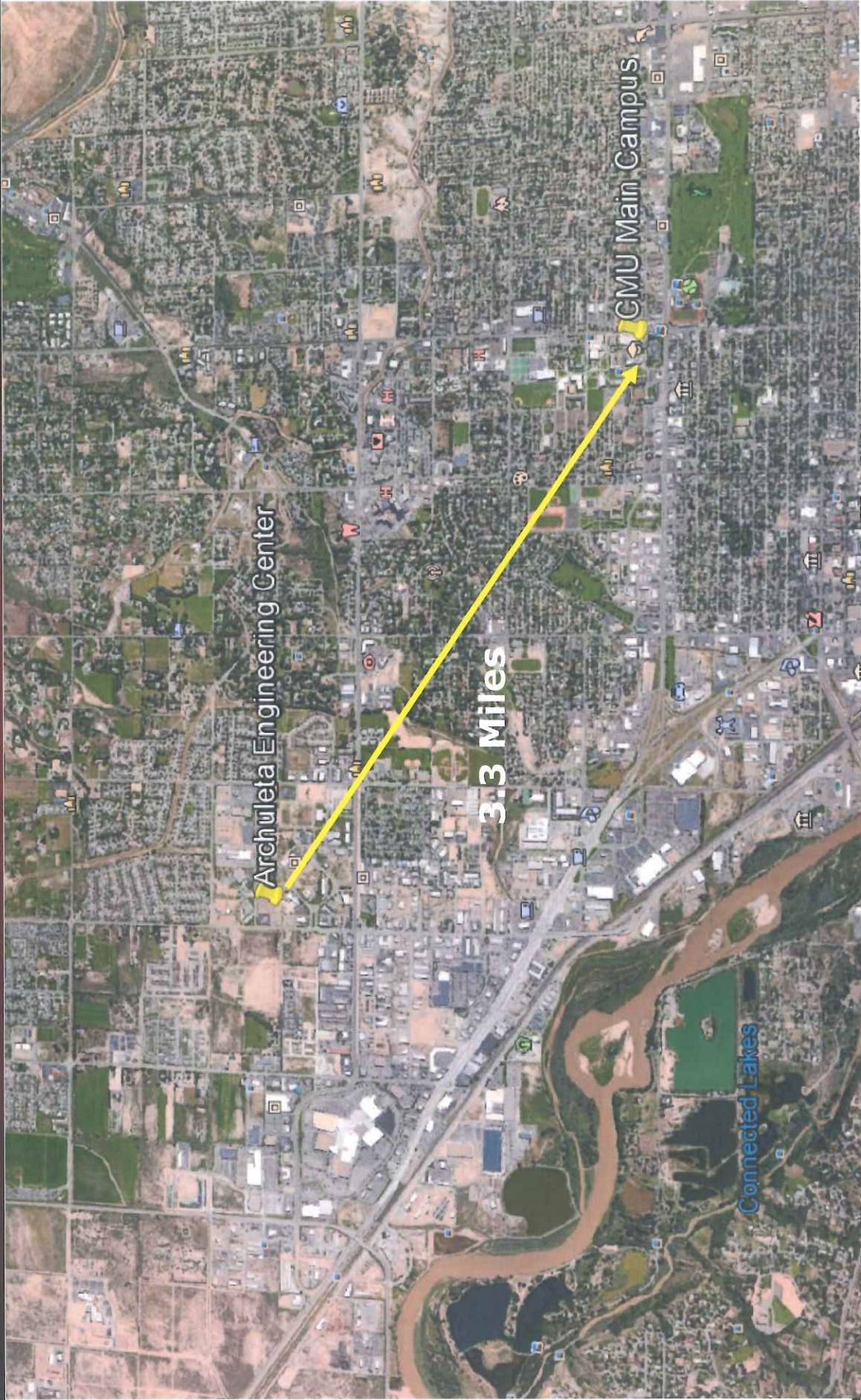
\*Bachelor of Science in  
Applied Mechanical  
Engineering

\*Associate of Applied  
Science Mechanical  
Engineering Technology

COLORADO MESA  
UNIVERSITY



It's Time to Move...



COLORADO MESA  
UNIVERSITY



# CMU Computer Science & Engineering Building



Computer Science and Engineering Exterior

**Project Plan:** 87,500 square feet  
19,500 square feet MASC Dedicated Space  
\$32,805,723 Project Cost



COLORADO MESA  
UNIVERSITY



# Engineering Program Enrollment

|                        | 2009-10    | 2010-11    | 2011-12    | 2012-13    | 2013-14    | 2014-15    | 2015-16    |
|------------------------|------------|------------|------------|------------|------------|------------|------------|
| Senior                 | 0          | 0          | 9          | 13         | 13         | 14         | 15         |
| Junior                 | 0          | 10         | 16         | 17         | 18         | 19         | 27         |
| Sophomore              | 17         | 25         | 28         | 28         | 60         | 52         | 69         |
| Calc-Ready<br>Freshman | 53         | 64         | 64         | 70         | 92         | 126        | 132        |
| Pre-Engr               | 56         | 77         | 122        | 107        | 157        | 97         | 100        |
| MET                    | 0          | 0          | 15         | 32         | 69         | 79         | 77         |
| <b>Totals</b>          | <b>126</b> | <b>176</b> | <b>254</b> | <b>267</b> | <b>418</b> | <b>387</b> | <b>420</b> |

**CMU  
CASH  
FUNDED  
PROJECTS**



# Garfield Hall Phase 3A

149 New Beds: \$12,649,630

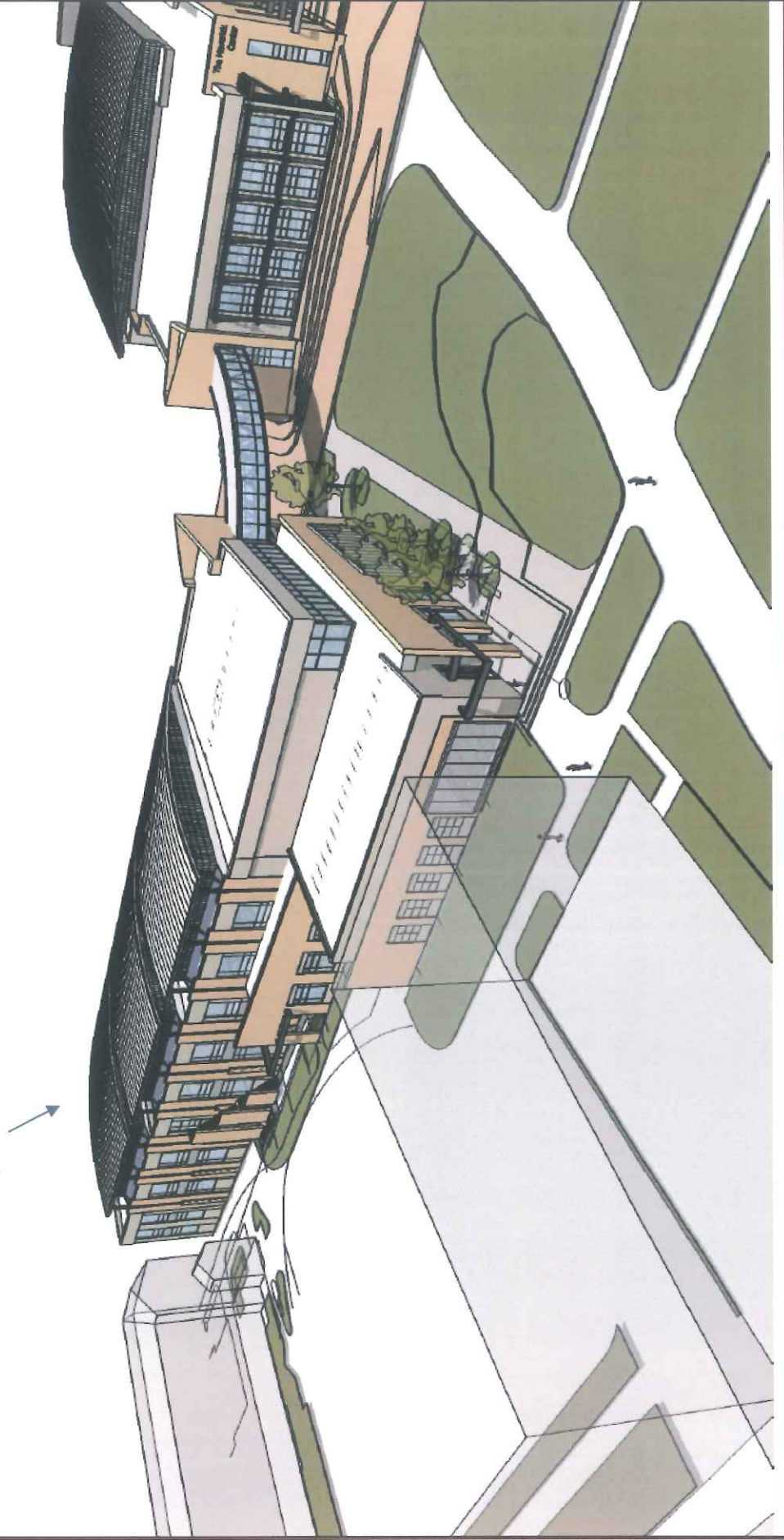


Target Completion: Fall, 2016

COLORADO MESA  
UNIVERSITY

# Kinesiology Expansion: Maverick Pavilion

Phase IV: \$9,997,913  
32,893 square foot addition



COLORADO MESA  
UNIVERSITY



THANK YOU



Tim Foster, President  
Colorado Mesa University  
(970)-248-1498  
[tfoster@coloradomesa.edu](mailto:tfoster@coloradomesa.edu)

COLORADO MESA  
UNIVERSITY