

Living With The Threat of Wildfire

A Resource Guide for Property Owners in Summit County



Discussion and Tips to Manage Risks, Protect Neighborhoods, Improve

The Threat of Wildfire



Danger Heightened as Mountain Pine Beetles Make Way for New Forest

Mountain pine beetle has packed a mighty punch during this current infestation, defying notions of a routine outbreak and making forest history with its prolonged and destructive low reached epidemic levels. Underway in the Rocky Mountain region since 1996 and hundreds of miles from the southern Colorado Rocky Mountains to the northern Rockies in Alberta, Canada, experts now predict the current infestation will cause a 90 percent loss of lodgepole pine stands. Drought conditions during the early 1990's, a lack of active forest management for 30 years and mature forests have contributed to the extent of this outbreak. By the end of the century, experts predict virtually every mature lodgepole will die, including those in the White River National Forest, Summit County. These circumstances pose a heightened hazard for wildfire as well as the need for forest regeneration.

To determine the wildfire danger in your neighborhood and create an action plan for your property. Don't forget to encourage your neighbors to do the same.

Public and Private Efforts

In response to the hazards that now exist because of the ongoing pine beetle activity, Summit County, in cooperation with the Summit County Wildfire Council and its partner agencies, implemented a Summit County Community Wildfire Protection Plan (SCCWPP). Key components of this plan

include mapping along with onsite inspection by firefighters to identify areas where fuel reduction is important to protect homes, businesses and critical infrastructure. These areas are called

fuel breaks. This framework to guide wildfire prevention efforts in Summit County, towns within the state of Colorado, the United States and Colorado State Forest Services.

The plan also includes a funding mechanism to protect critical infrastructure through creating fuel breaks and creating space on over 8,000 acres of private land.

However, the plan also asks for participation by private property owners in Summit County.

Living With The Threat of Wildfire

PROTECTING YOUR HOME



If you reside in Summit County and want to minimize the risk of wildfire around your property, it's time to act now to protect your home.

Start with a defensible space property assessment from your local fire protection district.

A defensible space property assessment will include identification of vegetation which should be trimmed, trees and other vegetation, where best to store woodpiles, propane tanks and other flammable materials. To have your property assessed, call:

Copper Mountain Consolidated Metro District (970) 968-2537

Red, White & Blue Fire Protection District (970) 453-2474

Lake Dillon Fire Rescue (970) 262-5100

Be sure to encourage your neighbors to have their property assessed for defensible space as well.

Help organize your neighborhood's fuels reduction activities.

Take a leadership role in your neighborhood and explain the benefits of fuels reduction activities to the County hopes to promote and increase the amount of proactive wildfire mitigation projects. If you can organize your neighborhood, call your local fire protection district:

Copper Mountain Consolidated Metro District (970) 968-2537

Red, White & Blue Fire Protection District (970) 453-2474

Lake Dillon Fire Rescue (970) 262-5100

See www.colostate.edu and www.firewise.org for more home protection information.

Replace wood shake shingles with fire-resistant roof material.

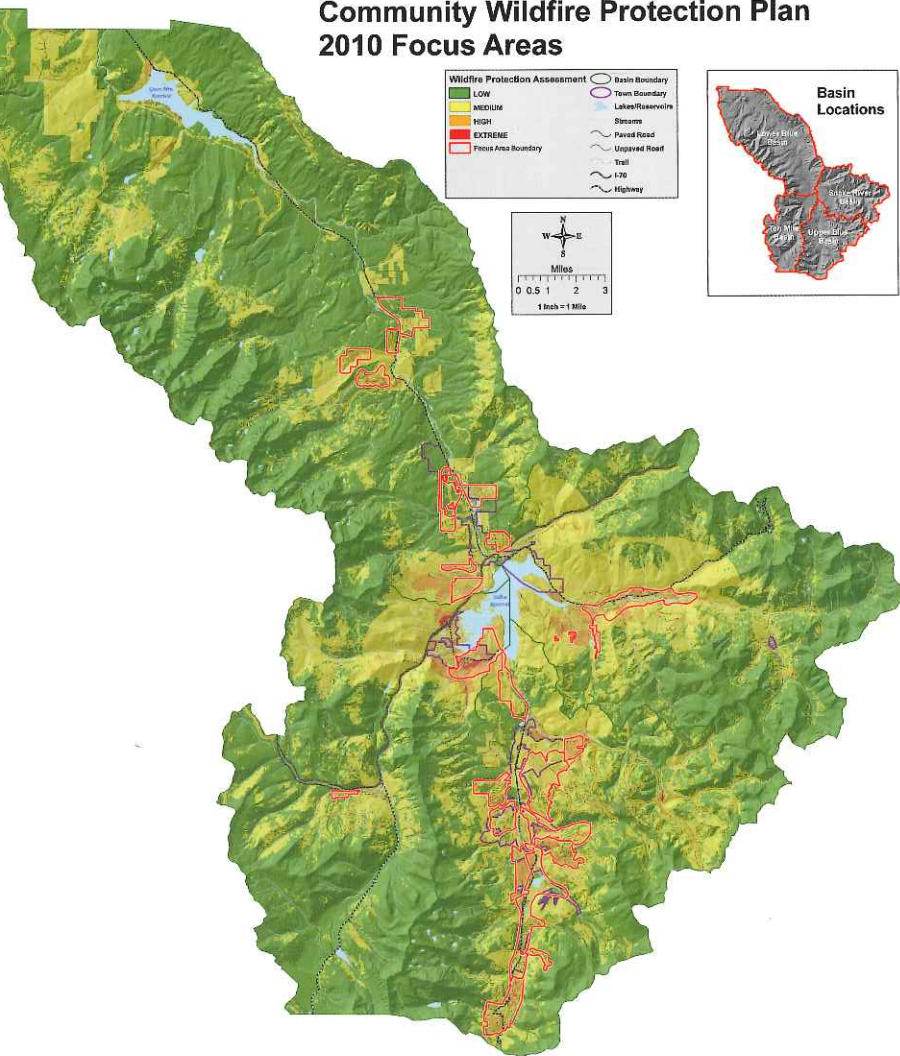
Be sure your house or lot number is visible from the street for emergency personnel.

Summit County Extension: (970) 668-4140

The Threat of Wildfire

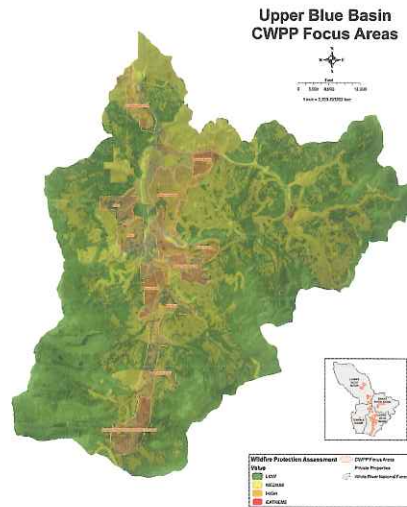
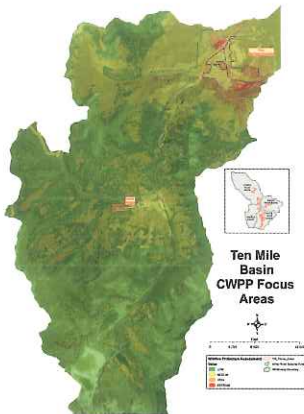
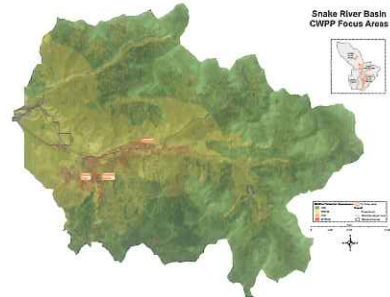
RISK IN YOUR NEIGHBORHOOD

Summit County, CO Community Wildfire Protection Plan 2010 Focus Areas



Summit County has been documented as shown above. The data has been compiled over a period of time and is used to prioritize fuels reduction projects. This work includes fuels reduction projects on public lands. The hazard map uses four categories to identify the risk for wildfire: Extreme, High,

Medium, and Low, based on slope, fuels, access and building materials. The map is available online at www.co.summit.co.us/wildfiremitigation/ and is divided into watershed basins for additional reference.



There is a large percentage of land in Summit County that is at risk of wildfire. Every effort is mitigate through citizen agency cooperation.

- **Upper Blue Focus Area**
- **Lower Blue Focus Area**
- **Ten Mile Focus Area**
- **Snake River Focus Area**

The Threat of Wildfire

COUNTY EVACUATION PLAN

During an area evacuation in Summit County, the Summit County public safety agencies will guide residents, employees and guests to safety.

A reverse 9-1-1 emergency notification system (Reverse 9-1-1) will call phones identified in a pre-recorded message.

A Weather Alert System, which is a part of the National Weather Service, will be activated to send information to radio and television stations.

Text messages will deliver emergency alerts, notifications and updates to pagers, cell phones and e-mails. Go to www.scalert.org to register.

Evacuation through neighborhoods will occur when time and personnel allow.

Instructions to evacuate from law enforcement agencies.

If asked to evacuate, be prepared to leave the porch light on and display a white object in a front window, to notify emergency personnel the home has been evacuated.

Keep pets with you if they are on a leash or contained. Pets are not allowed at public events. Public safety personnel will work with the local animal control to accommodate pets.

Take items with you such as prescriptions, medications, eyeglasses, important documents (birth certificates), pet supplies and a child's favorite toy. Prepare this list ahead of time. For a more comprehensive list...

Visit www.co.summit.co.us/wildfiremitigation/ for details, including information on shelters and neighborhood pick-up locations.

For more information, you can register at Summit County Public Health at (970) 668-9161 or www.scalert.org, or contact the Special Needs Group.



Living With The Threat of Wildfire

FREQUENTLY ASKED QUESTIONS

Q: I want to do some fuels reduction work on my property, what is the best about it?

A: The best and safest strategy is to contact your local fire district and/or local municipal property risk assessment.

Q: How do I mitigate fuels in U.S.F.S. property?

A: Contact the Dillon Ranger District at: (970) 468-5400.

Q: Is there a use for the trees that are removed?

A: In areas where access allows, trees can be hauled off for use as wood products, including lumber, fence materials and even pellets for wood burning stoves. The "slash" (limbs) is treated in several different ways. In areas that are not accessible, trees that are cut are left on the ground to help with erosion control.

Q: Is it possible to obtain the cut trees to be used as lumber or wood products?

A: Yes. Please call Colorado Wood Utilization and Marking Program at: (970) 247-5252 utilizing local wood.

Q: Where can I take my slash for disposal?

A: Slash can be disposed in several ways, including scattering, piling and burning, chipping on site or chipping and hauling away. You can work with your contractor or call Summit County at: (970) 668-3595 for more information.

Q: Is it really safe to burn slash?

A: Slash burning does have some safety concerns, but if done properly, it can be a very effective solution for slash treatment. Summit County adheres to strict slash burning regulations and has a permitting system in place. If you are considering piling your slash to burn please contact your local fire protection district.

Q: Who will respond to a wildfire in Summit County?

A: Depending on which part of the county the fire is located, firefighters from local fire districts will initially respond to all reports of a wildfire. Since nearly 85% of the forest in Summit County is National Forest land, it is likely that firefighters from the U.S. Forest Service will respond to the fire as well.

Q: What is the role of the U.S. Forest Service in the event of a wildfire in Summit County?

A: The U.S. Forest Service will respond and manage any fire on National Forest land. In the event of a wildfire on private land, they may assist local law enforcement & fire agencies with containment.



Rescue

Summit County Office of Emergency Management

(970) 423-8911

www.co.summit.co.us/emergencymanagement

Blue District

Summit County Extension

(970) 668-4140

www.co.summit.co.us/wildfiremitigation

n Consolidated

U.S. Forest Service Dillon Ranger District

(970) 468-5400

[www.fs.fed.us/r2/whiteriver/rangerdistricts/
dillonindex.shtml](http://www.fs.fed.us/r2/whiteriver/rangerdistricts/dillonindex.shtml)

etro.org

Sheriff

Colorado State Forest Service

(970) 887-3121

<http://csfs.colostate.edu/pages/granbydist.html>

o.us/Sheriff/index.htm