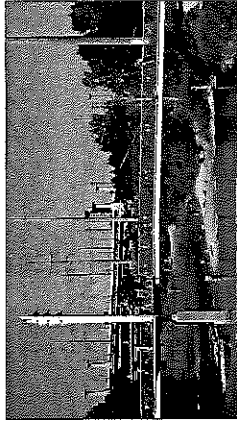


NATIONAL WESTERN CENTER



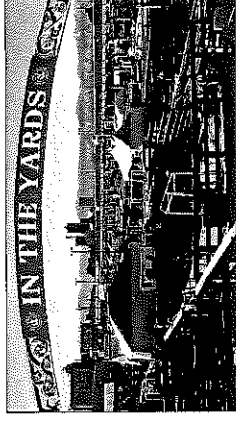
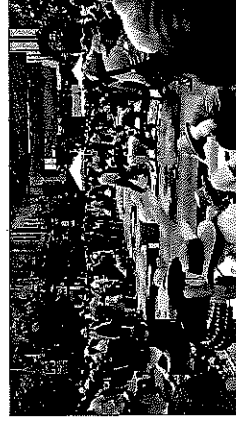
Master Plan Ideas

Improve Access to and Health of the South Platte River

- Move rail from river's edge and consolidate to center of site
- Bury or move the Delgany Interceptor sewer lines
- Relocate National Western Drive to allow for better river and Event Pavilion access
- Improve river habitat and health
- Create recreational trails and educational areas along the river

Flexible, Year-Round Programs to Drive New Tourism

- Create flexible, efficient, vibrant indoor and outdoor spaces that allow various uses throughout the year, including markets, offices, restaurants, retail, festivals, and the Stock Show
- Provide a variety of programs—educational, recreational, commercial, competitions, entertainment, visual and performing arts—for neighbors and local to global visitors
- Provide hands-on, informal and formal educational programs for families, students, and life-long learners
- Build off the history and heritage of the site, while highlighting innovation, particularly in food, energy, and water use
- Pursue long-term opportunities to create new programs, spaces, and partnerships



Provide New Connections

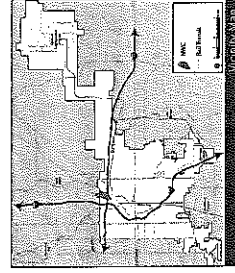
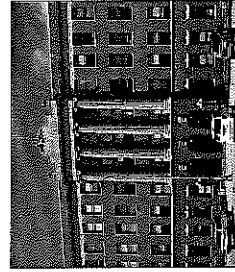
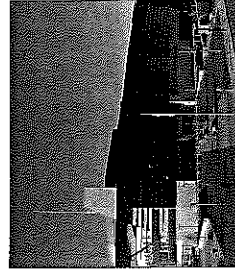
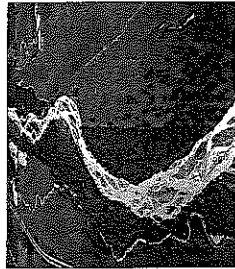
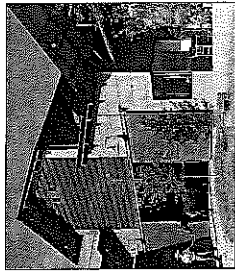
- Create two new connections across the river between Washington Street and National Western Drive at 49th Avenue and 51st Avenue
- Connect Washington Street and Brighton Boulevard with a new complete/green street
- Provide an elevated walkway connection to provide access to the RTD Rail Station
- Improve pedestrian and bicycle facilities throughout the NWCC
- Increase active transportation options with improved pedestrian and bicycle facilities on all new and existing streets
- Lower 46th Avenue under I-70 viaduct to allow easier movement between the NWCC and the Denver Coliseum
- Improve Brighton Boulevard to accommodate change in land use and improved streetscape that integrates green infrastructure
- Redevelop the area south of I-70, including Coliseum, for complementary uses to the NWCC

Provide Partnership Opportunities

- Build off the history and heritage of and secure the future of the National Western Stock Show
- Increase year-round program opportunities for education, food and food production, art, agriculture and livestock, water resources, and recreational activities through collaboration
- Provide flexibility for long term opportunities to add additional partners with complementary vision and goals
- Redevelop Coliseum site south of I-70 for complementary uses and new partners

For more information on the National Western Center please visit: Denvergov.org/NWCC

NATIONAL WESTERN CENTER



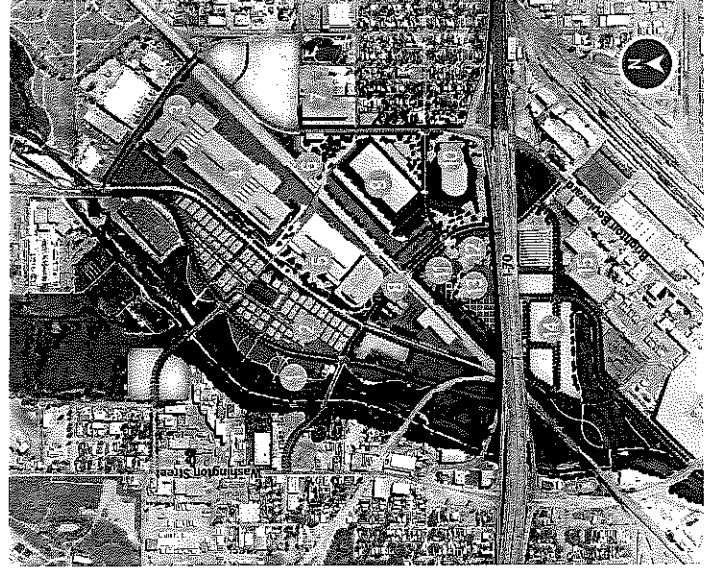
Site Organization and Character

Vision

The National Western Center celebrates the pioneering spirit and promise of the West through year-round experiential life-long learning, the arts, entertainment, competition and commerce.

Guiding Principles

- Community and Neighborhood Integration
- Engage the River and Nature
- Celebrate Western Heritage
- Inspire Health and Wellness
- Build Cultural Crossroads
- Be Pioneering: Break Trail and Foster Innovation
- Create Fun and Entertaining Experiences
- Grow Local, Regional, and Global Intelligence
- Embrace an Ethic of Regeneration



Illustrative Master Plan

Key Site Elements

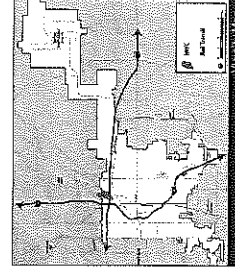
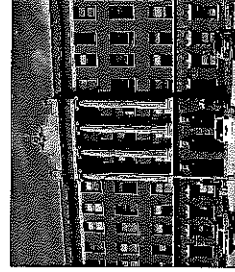
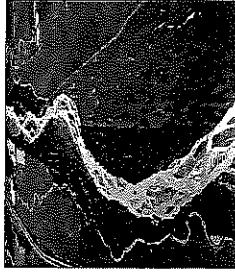
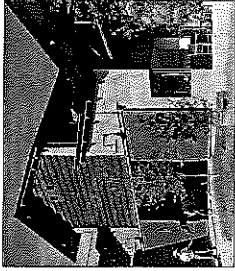
- 1 Water Resources Center and South Plate Riverfront
- 2 Stockyards/Event Pavilion
- 3 CSU Equine Sports Medicine Clinic
- 4 Equestrian Center
- 5 Livestock Center
- 6 NWC Transit Station
- 7 Shared Use/TOD Parking Structure
- 8 Livestock Exchange Building/Flex Space
- 9 Trade Show/Exhibition Hall
- 10 New Arena
- 11 CSU Center
- 12 Colorado Commons
- 13 Stadium Arena Market
- 14 Coliseum Redevelopment
- 15 Forney Transportation Museum

National Western Center Partners



For more information on the National Western Center please visit www.nwc.org

NATIONAL WESTERN CENTER



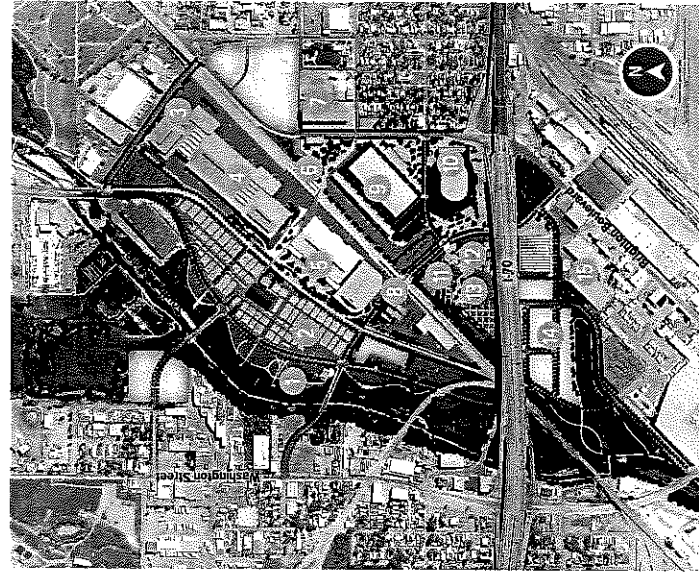
Site Orientation and Character

Vision

The National Western Center celebrates the pioneering spirit and promise of the West through year-round experiential life-long learning, the arts, entertainment, competition and commerce.

Guiding Principles

- Community and Neighborhood Integration
- Engage the River and Nature
- Celebrate Western Heritage
- Inspire Health and Wellness
- Build Cultural Crossroads
- Be Pioneering: Break Trail and Foster Innovation
- Create Fun and Entertaining Experiences
- Grow Local, Regional, and Global Intelligence
- Embrace an Ethic of Regeneration



Illustrative Master Plan

National Western Center Partners



Key Site Elements

- 1 Water Resources Center and South Platte Riverfront
- 2 Stockyards/Event Pavilion
- 3 CSU Equine Sports Medicine Clinic
- 4 Equestrian Center
- 5 Livestock Center
- 6 NWC Transit Station
- 7 Shared User/TOD Parking Structure
- 8 Livestock Exchange Building/Flex Space
- 9 Trade Show/Exhibition Hall
- 10 New Arena
- 11 CSU Center
- 12 Colorado Commons
- 13 Stadium Arena Market
- 14 Coliseum Redevelopment
- 15 Forney Transportation Museum

For more information on the National Western Center please visit: denvergov.org/NWCC

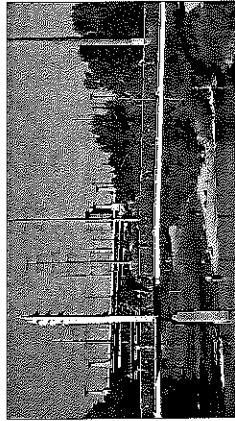
NATIONAL WESTERN CENTER



Master Plan Big Ideas

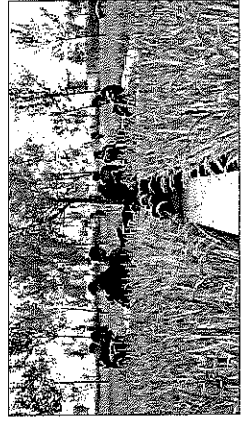
Improve Access to and Health of the South Platte River

- Move rail from river's edge and consolidate to center of site
- Bury or move the Delgany Interceptor sewer lines
- Relocate National Western Drive to allow for better river and Event Pavilion access
- Improve river habitat and health
- Create recreational trails and educational areas along the river



Flexible, Year-Round Programs to Drive New Tourism

- Create flexible, efficient, vibrant indoor and outdoor spaces that allow various uses throughout the year, including markets, offices, restaurants, retail, festivals, and the Stock Show
- Provide a variety of programs—educational, recreational, commercial, competitions, entertainment, visual and performing arts—for neighbors and local to global visitors
- Provide hands-on, informal and formal educational programs for families, students, and life-long learners
- Build off the history and heritage of the site, while highlighting innovation, particularly in food, energy, and water use
- Pursue long-term opportunities to create new programs, spaces, and partnerships



Provide New Connections

- Create two new connections across the river between Washington Street and National Western Drive at 49th Avenue and 51st Avenue
- Connect Washington Street and Brighton Boulevard with a new complete/green street
- Provide an elevated walkway connection to provide access to the RTD Rail Station
- Improve pedestrian and bicycle facilities throughout the NWCC
- Increase active transportation options with improved pedestrian and bicycle facilities on all new and existing streets
- Lower 46th Avenue under I-70 viaduct to allow easier movement between the NWCC and the Denver Coliseum
- Improve Brighton Boulevard to accommodate change in land use and improved streetscape that integrates green infrastructure
- Redevelop the area south of I-70, including Coliseum, for complementary uses to the NWCC



Provide Partnership Opportunities

- Build off the history and heritage of and secure the future of the National Western Stock Show
- Increase year-round program opportunities for education, food and food production, art, agriculture and livestock, water resources, and recreational activities through collaboration
- Provide flexibility for long term opportunities to add additional partners with complementary vision and goals
- Redevelop Coliseum site south of I-70 for complementary uses and new partners

