

The Tivoli Quad – A Collaborative Campus Community Initiative

“Place-making” within a campus is paramount to defining community, and the Tivoli Quad will support that important element for all three of the institutions that share the Auraria Campus. The goals of the Tivoli Quad are programmatic, as well as physical, and are intended to support the campus community. Goals include:

- Creating a sense of place and community.
- Engaging the Tivoli Student Union through a series of tiered patios on the east side of the Tivoli (which subsequently engage with the Quad’s green surface).
- Providing an outdoor events venue for concerts, festivals, graduations, gatherings, etc., including providing a location to showcase institutional student talent.
- Providing a casual gathering place, with personal and group spaces, allowing for general social activities, throwing a frisbee, studying in the outdoors, or simply relaxing.



Primary Elements

The Tivoli Quad will be comprised of several key elements and phases, with the cornerstone of the project being the Tivoli east-side tiered patios and the primary green park space. These areas combine for the critical first phase of the project, which allows for immediate use and enjoyment. Phase 1 elements include the development of the tiered patios, demolition of the softball infrastructure, fencing and other undesired amenities and modification of the softball field and irrigation to create a natural turf quad.

Subsequent phases will include infrastructure to support large events, lighting to expand hours of utilization, and roadways to provide support and access. Phase 2 elements include bike path, roadway and streetscape build out of the Larimer, 11th and Walnut Street modifications, utility and storm water infrastructure, site and activity lighting, and site finishes and amenities. Phase 1 is cash funded through a grant from the Auraria Foundation. Phase 2 is cash funded through a \$5 per semester student fee, as well as, parking revenue reserve funds.

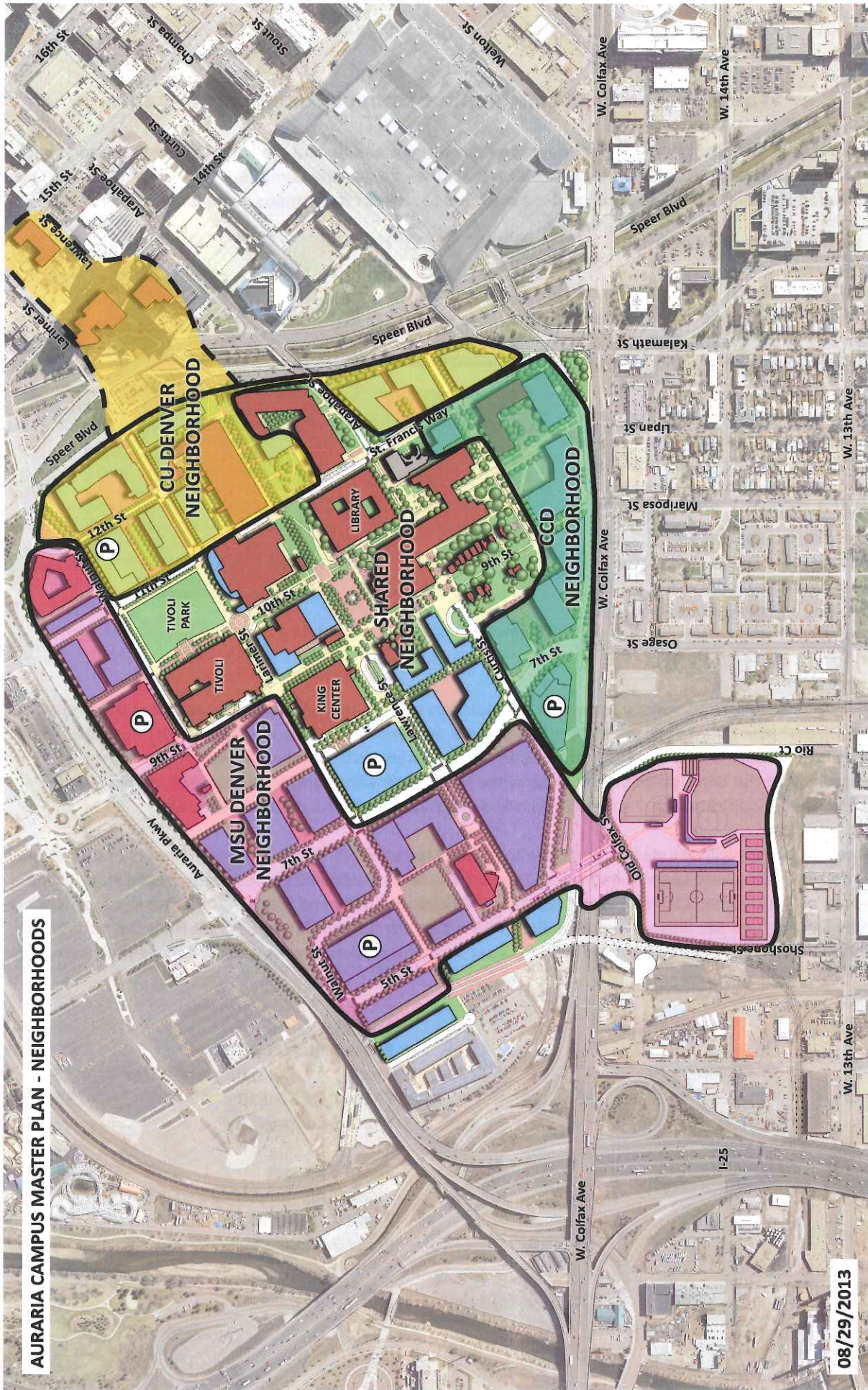


Budget

Phase 1 Budget	\$3,300,000
Phase 1 AE, Consulting and Other	\$550,000
Phase 1 Construction	\$2,500,000
Phase 1 Contingency	\$250,000
 Phase 2 Budget	 \$4,368,000
Phase 2 AE, Consulting and Other	\$700,000
Phase 2 Construction	\$3,334,545
Phase 2 Contingency	\$333,455
 Total Project Budget	 \$7,668,000



AURARIA CAMPUS MASTER PLAN - NEIGHBORHOODS



08/29/2013