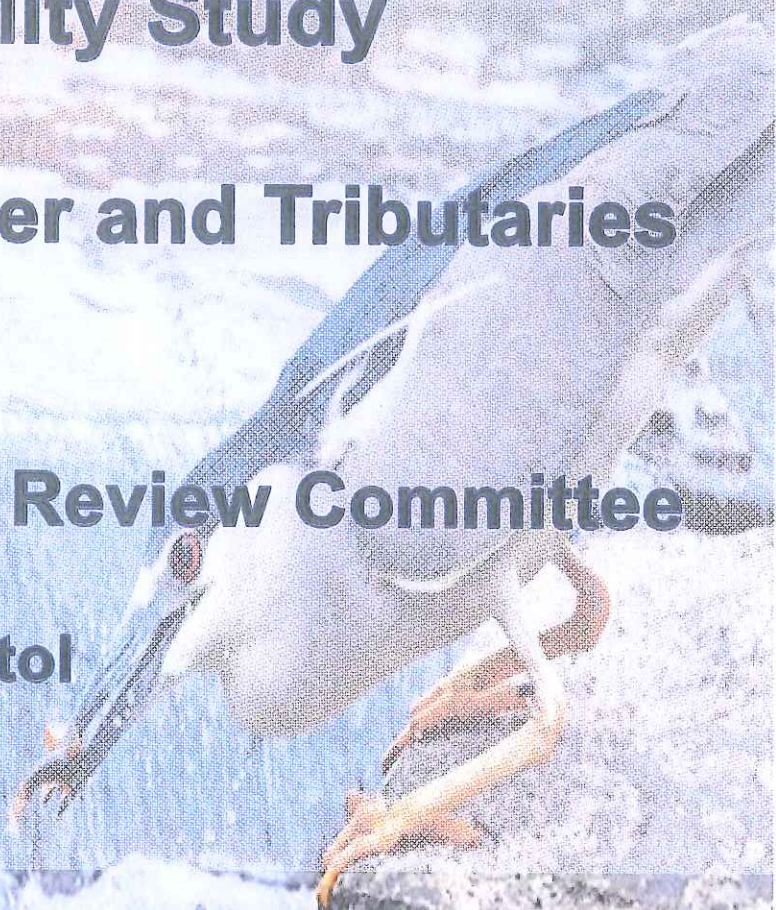


# Denver County South Platte River Restoration and Flood Control USACE Feasibility Study

## South Platte River and Tributaries

### Presentation to Water Resources Review Committee

Colorado State Capitol  
SCR 356  
Denver, Colorado



October 29, 2015



**Denver County South Platte River  
Restoration and Flood Control  
USACE Feasibility Study**

**Water Resources Review Committee Presentation Participants  
October 29, 2015**

Jeff Shoemaker, The Greenway Foundation

Peter Baertlein, City and County of Denver Public Works

Dave Bennetts, Urban Drainage and Flood Control District

Gordon Robertson, City and County of Denver Parks and Recreation

# Denver County South Platte River Restoration and Flood Control USACE Feasibility Study



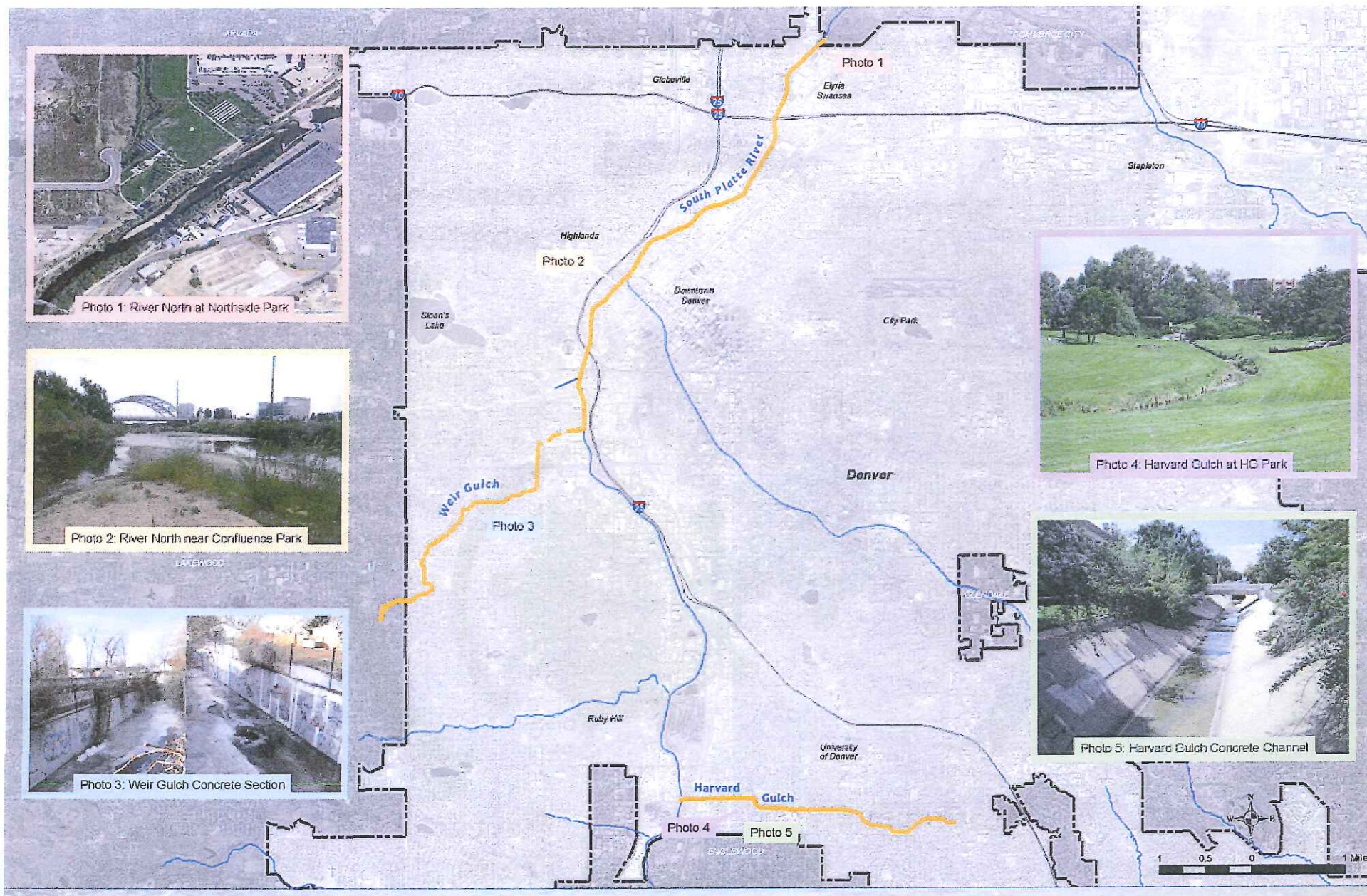


Photo 1: River North at Northside Park



Photo 2: River North near Confluence Park



Photo 3: Weir Gulch Concrete Section



Photo 4: Harvard Gulch at HG Park

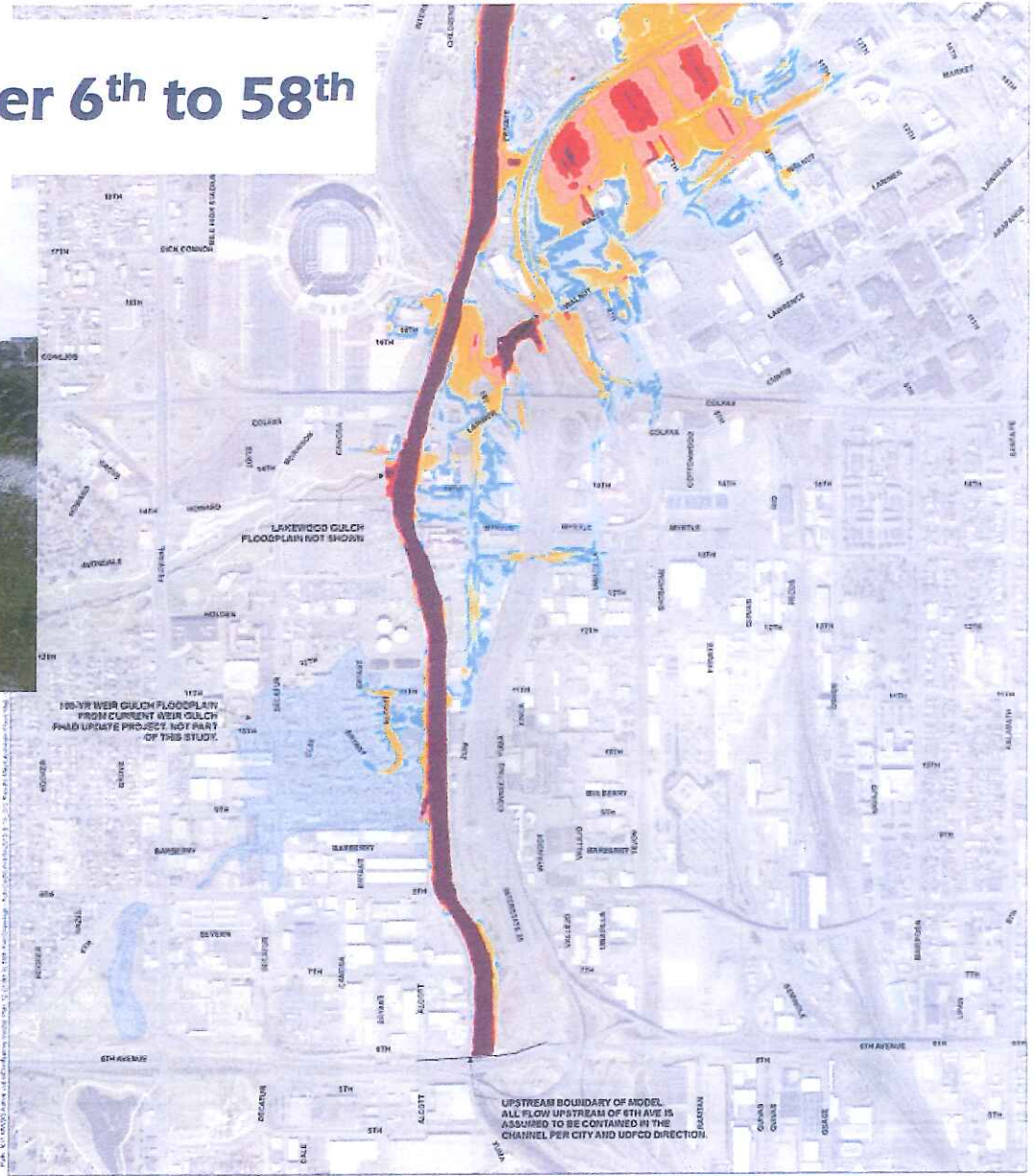


Photo 5: Harvard Gulch Concrete Channel



# Study Reaches

# South Platte River 6<sup>th</sup> to 58<sup>th</sup>

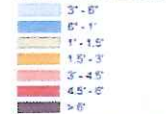


## SOUTH PLATTE RIVER - SPEER BLVD TO 6TH AVE TUFLOW ANALYSIS

Maximum Flow Depth

100-Year Design Flow

### Maximum Flood Depths\*



Weir Gulch Floodplain (not part of this study)



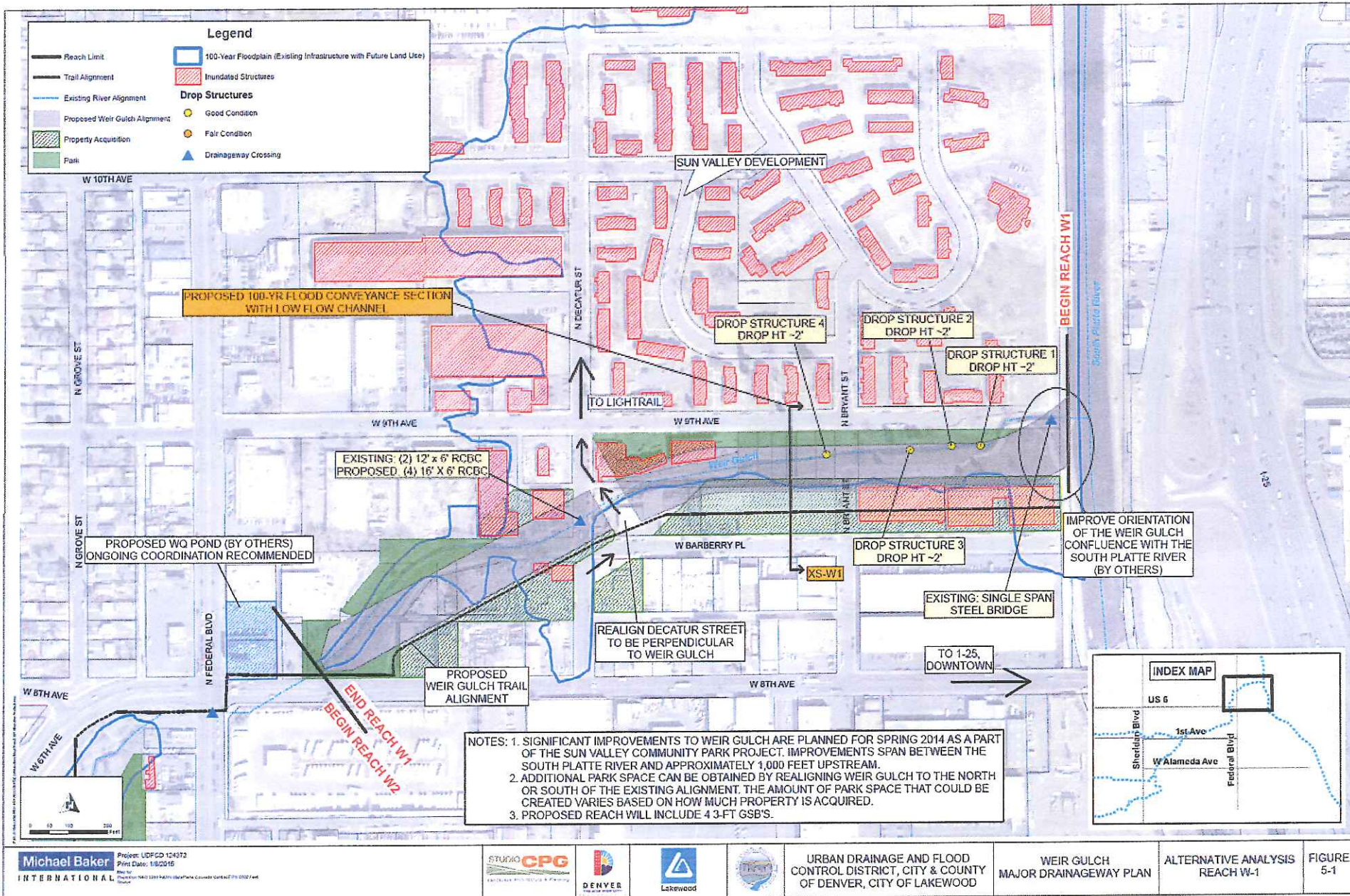
**MERRICK & COMPANY**  
McLaughlin Water Engineers



June 2015

\*Based on TufLOW 5-foot computation grid and 2014 LIDAR data





Michael Baker International  
 Project: UDPCD 124872  
 Print Date: 1/8/2016  
 Project Location: 1401 13TH PATH, Sun Valley Park, Colorado 80231-0102 Park

STUDIO CPG  
 LANDSCAPE ARCHITECTURE & PLANNING

DENVER  
 THE COLORADO CAPITAL

Lakewood

TRISTAR

URBAN DRAINAGE AND FLOOD CONTROL DISTRICT, CITY & COUNTY OF DENVER, CITY OF LAKEWOOD

WEIR GULCH MAJOR DRAINAGEWAY PLAN

ALTERNATIVE ANALYSIS REACH W-1

FIGURE 5-1



# Weir Gulch

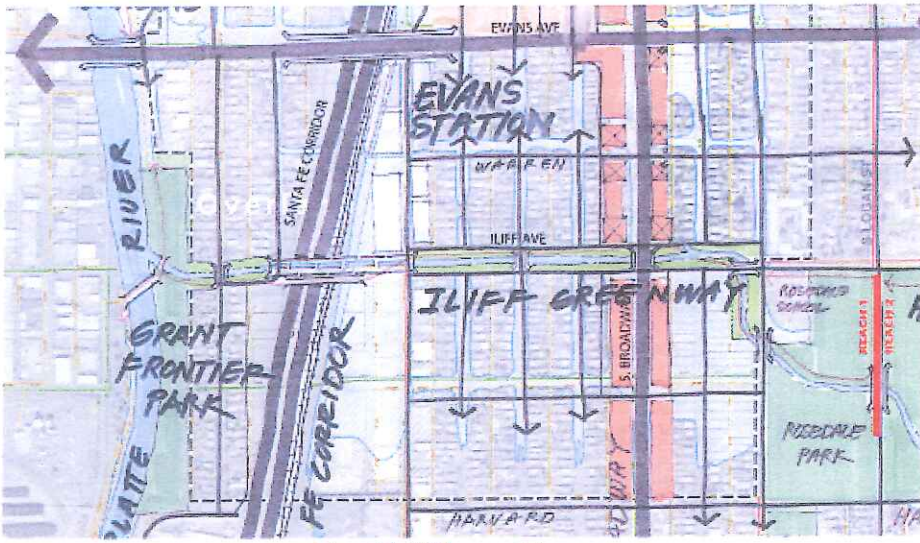


Figure 5-5 Iliff Greenway Plan

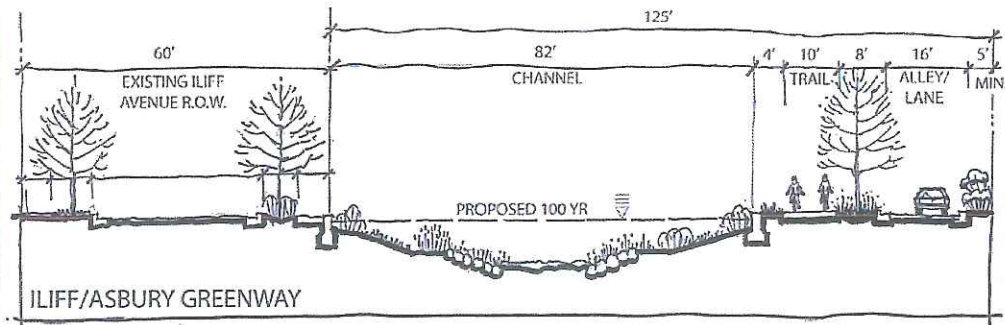


Figure 5-6 Iliff Greenway Cross Section



# Harvard Gulch



## Schedule

Existing and Future Without-Project-Conditions Analysis  
Formulate alternative plans  
Public Meetings Round 1  
Evaluate & Compare final alternative plans  
Public Meetings Round 2  
Tentatively Selected Plan (TSP) Milestone  
Public Meetings Round 3  
Agency Decision Milestone Meeting (ADM)  
Final Report Complete  
Conduct Civil Works Review Board  
Complete Chief's Report

## Start /End

Mar-2015  
Apr-2015/May-2015  
May-2015  
Nov-2015  
Jan-2016  
Jan-2016  
Apr-2016  
Jun-2016  
Nov-2016  
Jan-2017  
May-2017

---

## Budget by Fiscal Year

	<u>Denver</u>	<u>USACE</u>
FY14	\$200k	\$200k
FY15	\$500k	\$500k
FY16	\$700k	\$700k – request
FY17	\$175k	\$175 – request





# South Platte River Vision



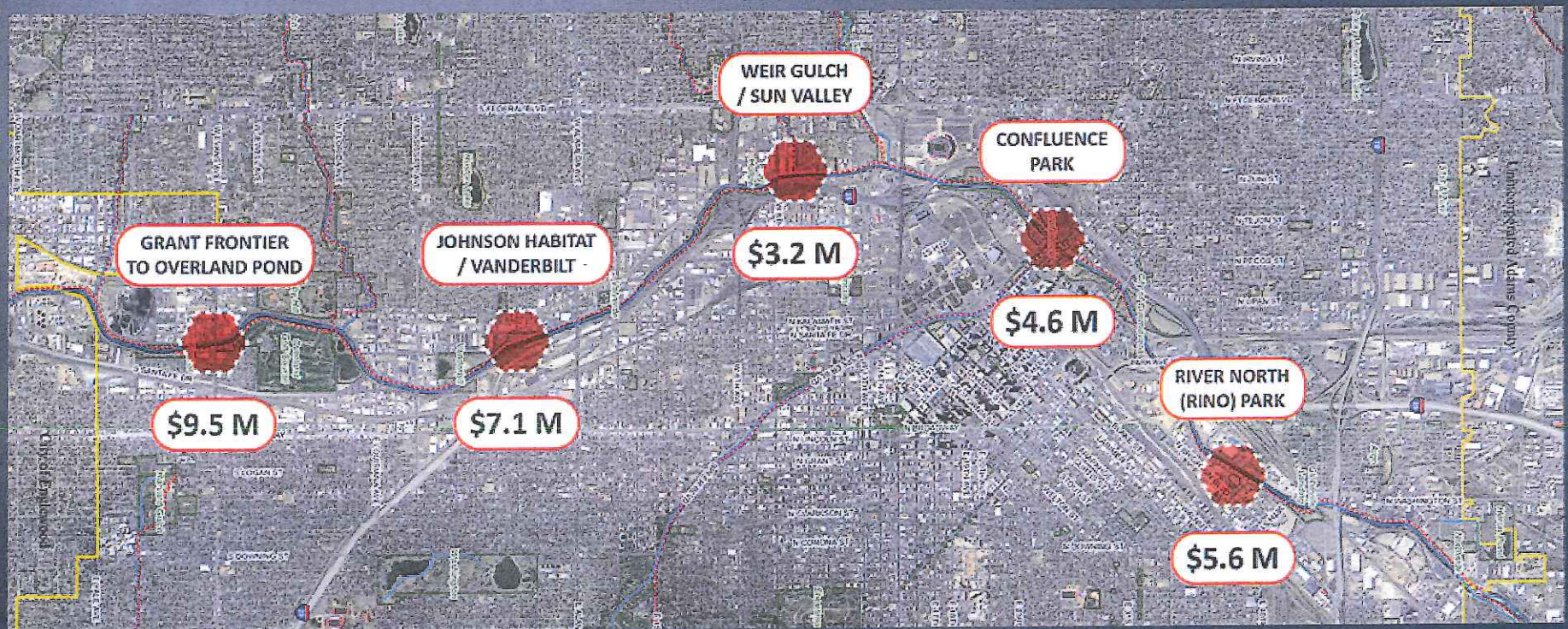
October 29, 2015

# Moving Forward

2014-2016

Construction: **\$30 Million**

1.25 Mi of Rehabilitated River (10%)



South Platte River Vision  
Weir Gulch



South Platte River Vision  
Weir Gulch



South Platte River Vision  
Johnson Habitat Park



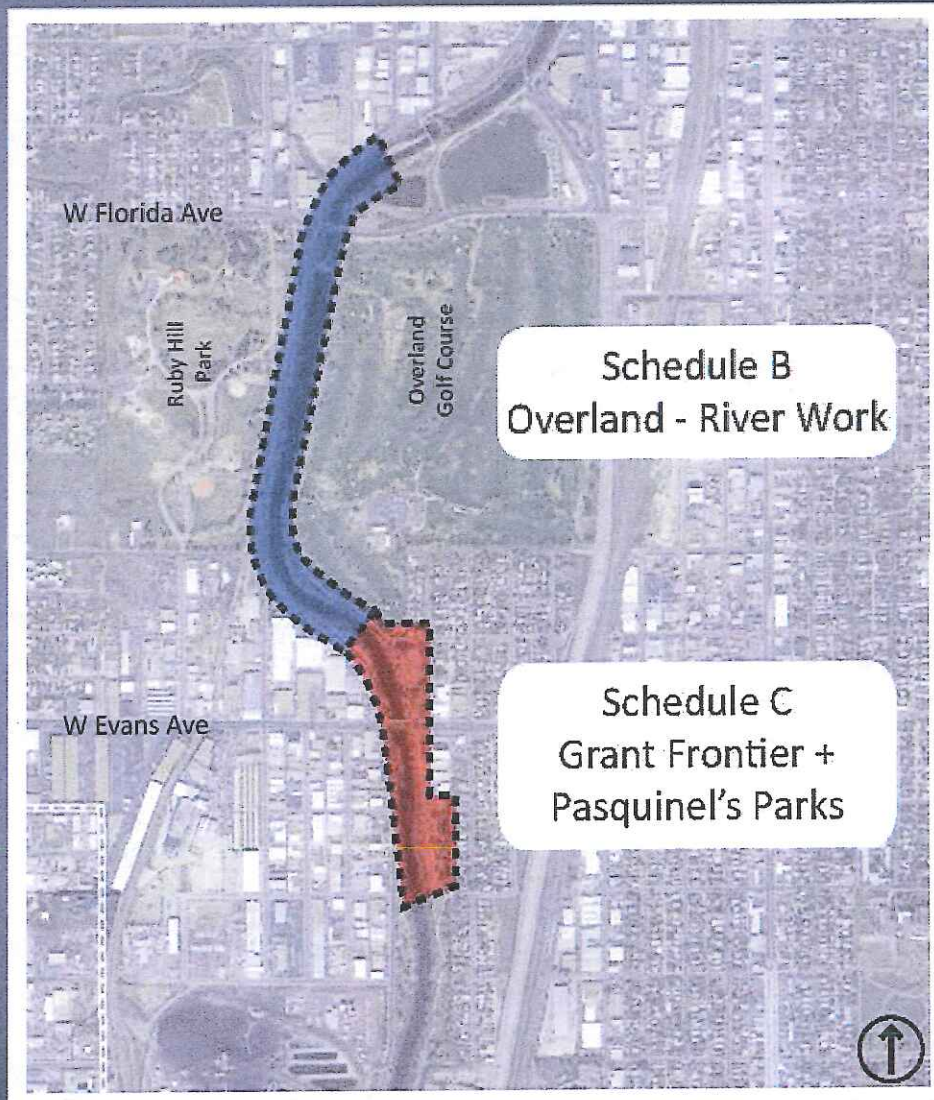
South Platte River Vision  
Johnson Habitat Park



South Platte River Vision  
Johnson Habitat Park



# South Platte River Vision Grant Frontier to Overland





South Platte River Vision  
Schedule B – Overland River Reach



South Platte River Vision  
Schedule B – Overland River Reach



# South Platte River Vision Schedule C



South Platte River Vision  
Schedule C

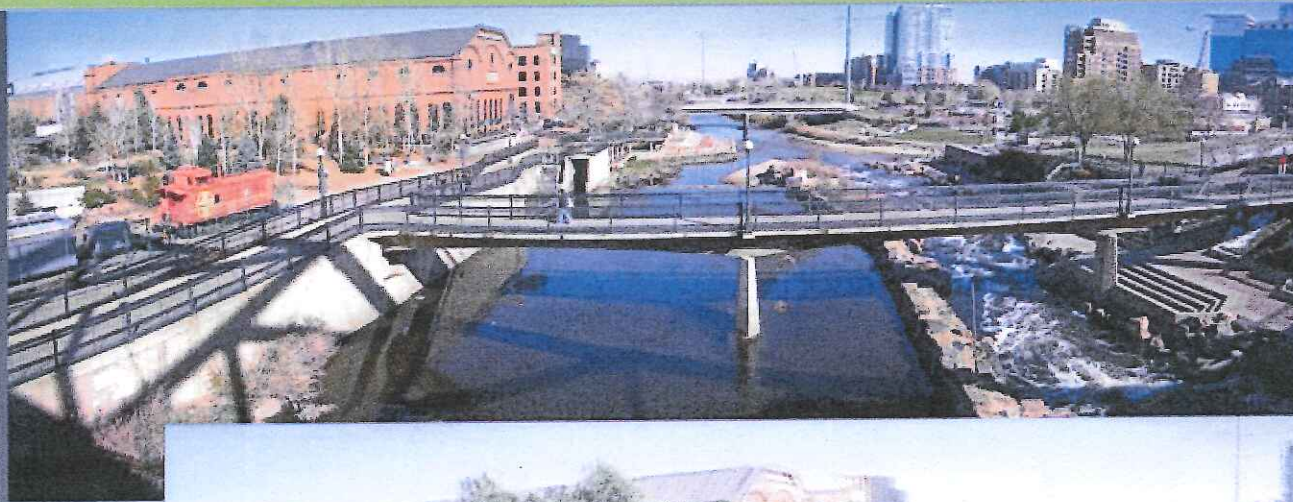


# South Platte River Vision Schedule C



Grant Frontier Park

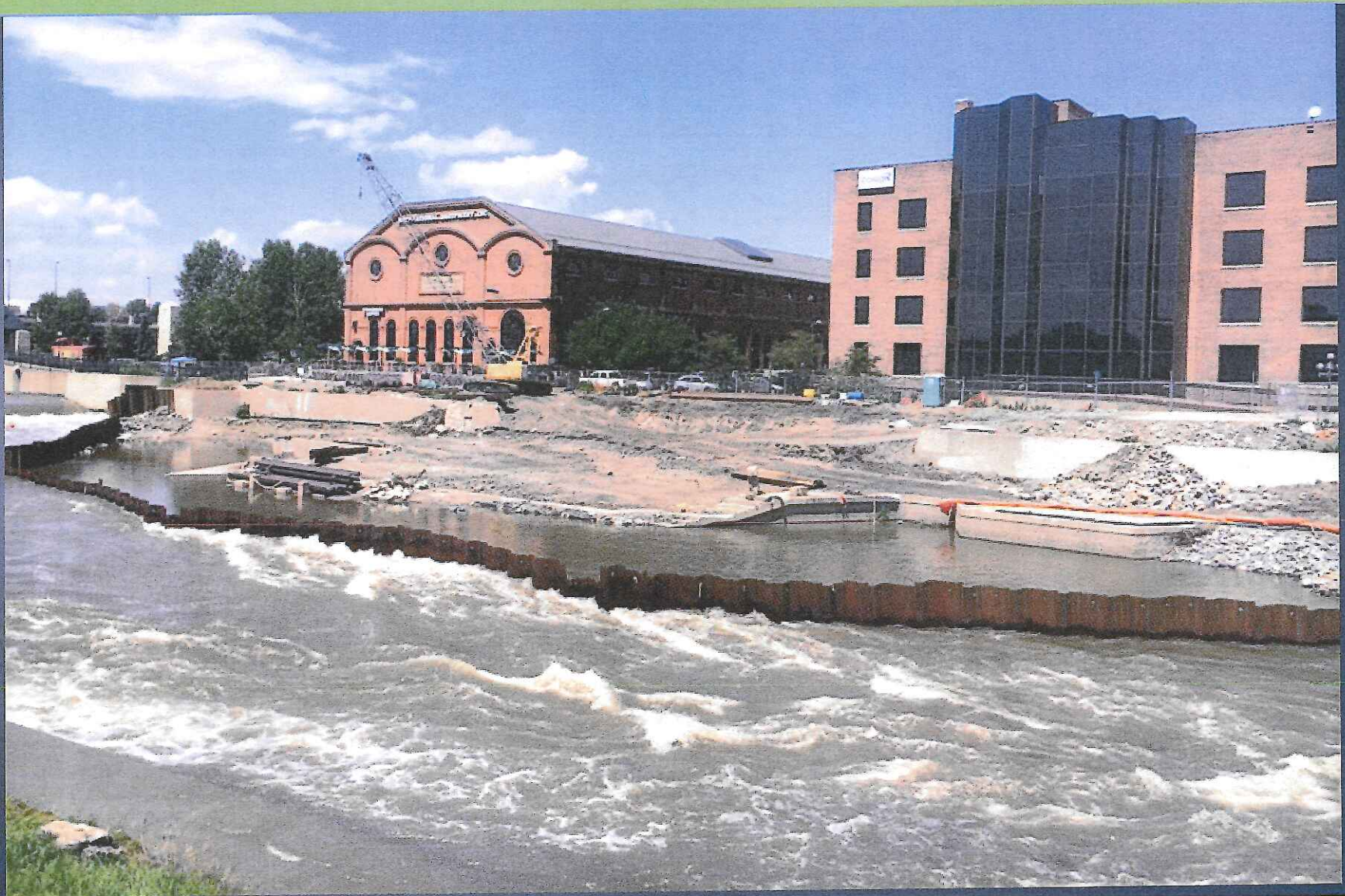
# South Platte River Vision Confluence Park



# South Platte River Vision Confluence Park



South Platte River Vision  
Confluence Park





# South Platte River Vision River North Park



# Discussion + Questions

