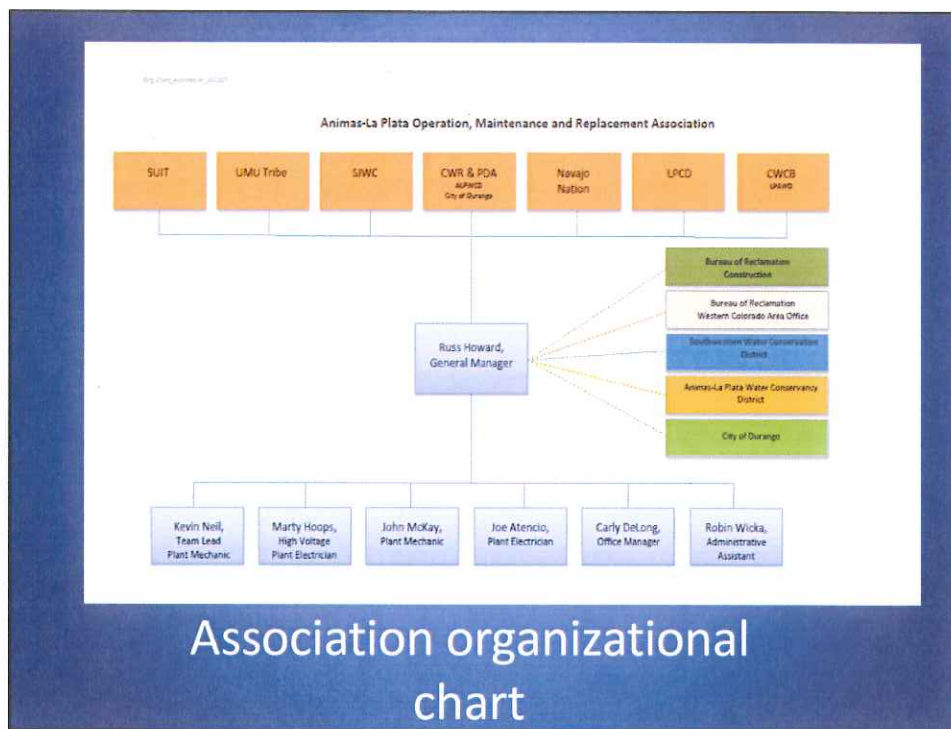


Animas-La Plata Project Stakeholders

- Colorado Water Conservation Board
 - La Plata Archuleta Water District
- Colorado Water Resources and Power Development Authority
 - ALPWCD and the City of Durango
 - La Plata West Water Authority and Lake Durango
- San Juan Water Commission (New Mexico)
- La Plata Conservancy District of New Mexico
- Ute Mountain Ute Indian Tribe
- Southern Ute Indian Tribe
- Navajo Nation



Components of The Animas – La Plata Project

Ridges Basin Dam & Lake Nighthorse

- Total capacity: 123,541 acre feet
- Height above streambed: 217 feet
- Crest length: 1,670 feet

Durango Pumping Plant

- Capacity: 287 cfs
- 8 pump units (4 large, 2 medium, 2 small)
- Dynamic lift: 550 feet

Ridges basin Inlet Conduit

- Capacity: 287 cfs
- Length: 2.1 miles



Interior of Durango Pumping Plant
Shows the 8 pumps and motors.