

HB15-1080

Keep Breakfast After The Bell At 80%



Please see our
informational
video at:
[http://www.d11.org/
FNS/Pages/
KeepBABat80.aspx](http://www.d11.org/FNS/Pages/KeepBABat80.aspx)

Information Packet Contents

- Keep Breakfast After the Bell At 80%
- Keep BAB @ 80% Excel Spreadsheet of Net Income/Loss Caused by Phase II
- Email to Rick Hughes and CSNA Leadership from LiveWell Colorado's Sarah Kurz
- Letter from District 49's Brett Ridgeway
- Letter from Karen Beers, Concerned Registered Dietitian at Penrose Hospital about obesity impact of Breakfast After the Bell Expansion
- Colorado Springs School District 11 Board of Education Resolution

Thank you for listening and considering our support of HB15-1080!

Breakfast After the Bell

REVENUE AND EXPENDITURES

PER MEAL REVENUE AND EXPENDITURES

REVENUE	FEDERAL/STATE REIMBURSEMENT PER MEAL
70 % FREE AND REDUCED	\$1.85
30% PAID	\$0.27
BLENDED REIMBURSEMENT RATE (((\$1.85 X .70)+(\$0.27 X .30))/ 100	\$1.37
EXPENDITURES	COST PER MEAL
MEAL COST WHEN NEW REGULATIONS ARE IMPLEMENTED	\$1.54
BLENDED REIMBURSEMENT RATE	\$1.37
PROFIT/(Loss)	(\$0.17)

SCHOOL BREAKFAST PROFIT/(LOSS) CALCULATION

_____	+	_____	X	_____	=	_____
ADP FREE		ADP REDUCED		REIMB. RATE		AV. DAILY F/R REIMB
_____	X	_____			=	_____
ADP PAID		REIMB. RATE				AV. DAILY REIMB
		TOTAL AVERAGE DAILY REIMBURSEMENT				_____
_____	X	_____			=	_____
TOTAL ADP		MEAL COST				DAILY COST
		SCHOOL SITE DAILY PROFIT / (LOSS)				_____

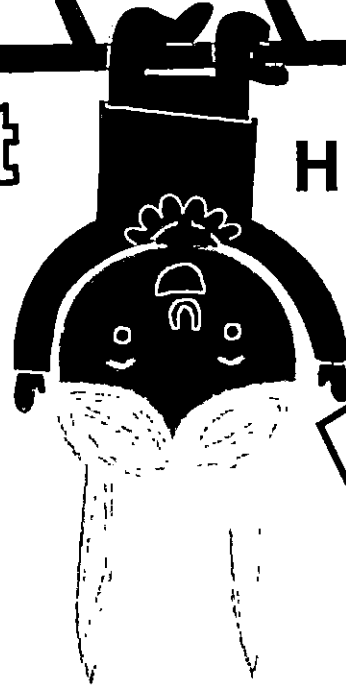
Breakfast After the Bell Talking Points 1-27-15

We would respectfully ask that you consider the following points when reviewing this proposed legislation:

1. Colorado Springs D-11 FULLY supports the Breakfast After the Bell Program (thanks Rep. Moreno) at 80% - 100% FRL status schools. We want kids to be fed and nourished!
2. This bill does NOT kill the Breakfast After the Bell Program. It just freezes the requirement at 80% FRL schools rather than dropping to 70% as originally passed.
3. Districts are not PROHIBITED from serving BAB at lower than 80% FRL schools. Every District still can locally choose to offer the program where needed.
4. Many schools offer breakfast BEFORE the Bell at schools between 70%-80%. The BEFORE the bell program works economically since we don't have to exempt NON-FRL kids from payment. Children are NOT going hungry for lack of a breakfast in our communities.
5. The Federal government recently added a fruit portion component to the required meal which has increased the cost of the meal by \$0.35.
6. The consolidation of dairies on the front range increased the D-11 milk contract by over 30% this year! There is only one dairy in Colorado Springs that serves schools.
7. Most schools will lose about \$0.25/meal per day for schools in the 70% FRL to 80% FRL range. This equals approximately \$10,000/year per school.
8. School Districts across the State of Colorado are now losing money in their Food Service programs due to a combination of factors. Higher costs of food, increasing costs of labor, elimination of all vending and beverage revenue, implementation of the Federal Smart Snack regulations and minimal increases in Federal meal reimbursements have squeezed the bottom line for many, many districts.
9. Since Food Service Fund economics are heavily regulated by the State of Colorado and the Federal government, School Districts will be forced into a couple of options:
 - a. Reverse the path on good healthy food and return to cheaper processed foods for lunch menu items
 - b. Take money from the General Fund to subsidize Food Services thereby taking away valuable instructional resources

Keep Breakfast After The Bell At 80%

HB15-1080



Please see our
informational
video at:
[http://www.d11.org/
FNS/Pages/
KeepBABat80.aspx](http://www.d11.org/FNS/Pages/KeepBABat80.aspx)

We would like to see
the Breakfast After The
Bell law modified to
allow school districts
local control and not
require districts to
serve Breakfast After
The Bell at schools
with Free and
Reduced-Price
eligibility below 80%.

The actual break-even
point for most school
districts is at the 80%
Free and Reduced
Eligibility threshold.

**Next year, SEVENTEEN of
twenty school districts in
Colorado will spend* a
total of \$663,833 from
Phase II of HB13-1006!**

* Unfunded Mandate

We are not asking the
State to subsidize this
program, beyond current
levels provided in Start
Smart Nutrition funding.
No Additional Funding

V.013015

See reverse for more information!

The TRUE Costs of a Healthy Breakfast Meal...

Colorado Springs School District 11 (CSSD11)
Actual Costs Experienced, Similar or Higher* Across the State

HB15-1080

Keep Breakfast After The Bell At 80%

Meal Category	Eligible Students		Reimb. Rate	=	Income*
Free	142	X	\$1.93	=	\$274.06
Reduced	28	X	\$1.93	=	\$54.04
Paid	69	X	\$0.28	=	\$19.32
Daily Total	239		\$1.45		\$347.42

Bill Supporters

- Aurora Public Schools
- Brighton 27J School District
- Colorado Springs School District 11
- Falcon School District
- Greeley School District
- Jefferson County School District
- Mapleton School District
- Pueblo 60 School District
- Colorado School Nutrition Association
- Healthier Colorado

Food Cost of a Meal *	
Milk	\$ 0.32
Fruit	\$ 0.35
Brd/Mt1	\$ 0.22
Brd/Mt2	\$ 0.23
Total	\$ 1.12/ml

Labor Cost of a Meal		
6.25 hrs. x	\$14.00/hr*	\$87.50
\$87.50/	175 meals	\$.50/ml
* Labor Cost includes wages, PERA, and prorated cost of benefits.		

Overhead**	
O.H.	3%
** Rate which can be applied, as per CDE & USDA goes up to 10.5% of revenue.	

Paper Cost of a Meal *	
Napkin/ Spoon	\$.015
Cleaning	\$.005
Total	\$.02/ml

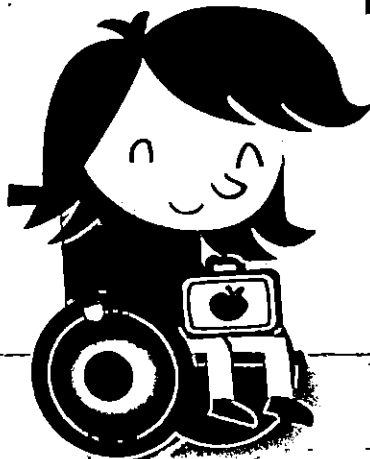
Daily Total Cost of Meal	239	X	\$1.70	=	\$406.30
--------------------------	-----	---	--------	---	----------

\$9,833 in just one year at one school! That's worth a lot of textbooks and computers!

<http://www.d11.org/FNS/Pages/KeepBABat80.aspx>

Financial LOSS:
(\$58.88)
PER DAY FOR
JUST ONE
SCHOOL

Statewide, this unfunded mandate will cost just twenty of Colorado's larger school districts over \$600,000 annually!



* Conservative in comparison, considering CSSD11 has lower costs of wages than many Front-Range districts and CSSD11 belongs to a national group purchasing organization, which drive down costs.

** e.g. trash, equipment repair, utilities, supplies, depreciation, etc.



See reverse for more information!

Keep BAB@80%		COLORADO DEPARTMENT OF EDUCATION			Annual # Days	Percent of Students Served	Labor* Cost/Ml	Food Cost/Ml	Paper & Cleaning Cost/Ml	Overhead (Indirect) Cost % of Expenses	Total Cost	Total Revenue	Net Income	Breakfast Labor Cost/Day	Annual Loss
BAB "Real" Cost of 20 Colorado Districts		FALL 2013 K-12 FREE AND REDUCED LUNCH ELIGIBILITY BY SCHOOL			167	78%	\$ 0.50	\$ 1.12	\$ 0.02	3%	Calculation	Calculation	Calculation	Calculation	Calculation
DISTRICT NAME	SCHOOL CODE	SCHOOL NAME	K-12 COUNT	% FREE AND REDUCED ELIGIBLE	Average Daily Meal Participatio n	* Labor Cost includes PERA, Medicare, and prorated cost of benefits.	Fruit 1/2 cup Brd/Mt 1-2 oz Milk 8 oz	Spoon Napkin, etc.	Orange-shaded schools fall into the 70-80% Free and Reduced eligibility.						
MAPLETON 1	0263	GLOBAL LEADERSHIP ACADEMY	539	89.80%	78%	\$ 35,105.07	\$ 78,635.36	\$ 1,404.20	\$ 3,454.34	\$ 118,598.97	\$ 123,684.48	\$ 5,085.51	\$ 210.21		
MAPLETON 1	0507	ADVENTURE ELEMENTARY	346	87.57%	78%	\$ 22,534.98	\$ 50,478.36	\$ 901.40	\$ 2,217.44	\$ 76,132.18	\$ 77,670.13	\$ 1,537.95	\$ 134.94		
MAPLETON 1	0501	MONTEREY COMMUNITY SCHOOL	410	84.88%	78%	\$ 26,703.30	\$ 59,815.39	\$ 1,068.13	\$ 2,627.60	\$ 90,214.43	\$ 89,749.14	\$ (465.29)	\$ 159.90		
MAPLETON 1	0505	ACHIEVE ACADEMY	461	84.60%	78%	\$ 30,024.93	\$ 67,255.84	\$ 1,201.00	\$ 2,954.45	\$ 101,436.22	\$ 100,636.27	\$ (799.95)	\$ 179.79	\$ 5,358.22	
MAPLETON 1	9036	VALLEY VIEW K-8	483	79.71%	78%	\$ 31,457.79	\$ 70,465.45	\$ 1,258.31	\$ 3,095.45	\$ 106,277.00	\$ 100,327.55	\$ (5,949.44)	\$ 188.37		
MAPLETON 1	0509	CLAYTON PARTNERSHIP SCHOOL	484	77.07%	78%	\$ 31,522.92	\$ 70,611.34	\$ 1,260.92	\$ 3,101.86	\$ 106,497.03	\$ 97,784.88	\$ (8,712.15)	\$ 188.76		
MAPLETON 1	0506	EXPLORE ELEMENTARY	380	75.00%	78%	\$ 24,749.40	\$ 55,438.66	\$ 989.98	\$ 2,435.34	\$ 83,613.37	\$ 75,077.96	\$ (8,535.42)	\$ 148.20		
MAPLETON 1	0309	ACADEMY HIGH SCHOOL	379	74.41%	78%	\$ 24,684.27	\$ 55,292.76	\$ 987.37	\$ 2,428.93	\$ 83,393.34	\$ 74,323.75	\$ (9,069.59)	\$ 147.81		
MAPLETON 1	0504	WELBY MONTESSORI SCHOOL	213	74.18%	78%	\$ 13,872.69	\$ 31,074.83	\$ 554.91	\$ 1,365.07	\$ 46,867.50	\$ 41,727.49	\$ (5,140.01)	\$ 83.07		
MAPLETON 1	0502	MEADOW COMMUNITY SCHOOL	455	71.43%	78%	\$ 29,634.15	\$ 66,380.50	\$ 1,185.37	\$ 2,916.00	\$ 100,116.01	\$ 86,447.05	\$ (13,668.96)	\$ 177.45	\$ (51,075.57)	
MAPLETON 1 Total														\$ (45,717.35)	
ADAMS 12 FIVE STAR SCHOO	2918	FEDERAL HEIGHTS ELEMENTARY SCHOOL	581	94.32%	78%	\$ 37,840.53	\$ 84,762.79	\$ 1,513.62	\$ 3,723.51	\$ 127,840.45	\$ 138,971.79	\$ 11,131.34	\$ 226.59		
ADAMS 12 FIVE STAR SCHOO	6376	NORTH STAR ELEMENTARY SCHOOL	456	92.32%	78%	\$ 29,699.28	\$ 66,526.39	\$ 1,187.97	\$ 2,922.41	\$ 100,336.05	\$ 107,116.71	\$ 6,780.66	\$ 177.84		
ADAMS 12 FIVE STAR SCHOO	5706	MC ELWAIN ELEMENTARY SCHOOL	443	91.87%	78%	\$ 28,852.59	\$ 64,629.80	\$ 1,154.10	\$ 2,839.09	\$ 97,475.59	\$ 103,633.55	\$ 6,157.96	\$ 172.77		
ADAMS 12 FIVE STAR SCHOO	1878	CORONADO HILLS ELEMENTARY SCHOOL	528	90.34%	78%	\$ 34,388.64	\$ 77,030.55	\$ 1,375.55	\$ 3,383.84	\$ 116,178.58	\$ 121,778.77	\$ 5,600.19	\$ 205.92		
ADAMS 12 FIVE STAR SCHOO	6355	NORTH MOR ELEMENTARY SCHOOL	410	84.88%	78%	\$ 26,703.30	\$ 59,815.39	\$ 1,068.13	\$ 2,627.60	\$ 90,214.43	\$ 89,749.14	\$ (465.29)	\$ 159.90		
ADAMS 12 FIVE STAR SCHOO	8361	STUKEY ELEMENTARY SCHOOL	329	83.28%	78%	\$ 21,427.77	\$ 47,998.20	\$ 857.11	\$ 2,108.49	\$ 72,391.58	\$ 70,890.10	\$ (1,501.48)	\$ 128.31		
ADAMS 12 FIVE STAR SCHOO	4000	HILLCREST ELEMENTARY SCHOOL	463	82.72%	78%	\$ 30,155.19	\$ 67,547.63	\$ 1,206.21	\$ 2,967.27	\$ 101,876.29	\$ 99,204.71	\$ (2,671.58)	\$ 180.57		
ADAMS 12 FIVE STAR SCHOO	5814	THE INTERNATIONAL SCHOOL AT THORNTON	849	82.57%	78%	\$ 55,295.37	\$ 123,861.63	\$ 2,211.81	\$ 5,441.06	\$ 186,809.88	\$ 181,630.64	\$ (5,179.24)	\$ 331.11		
ADAMS 12 FIVE STAR SCHOO	2582	ROCKY MOUNTAIN ELEMENTARY SCHOOL	469	81.88%	78%	\$ 30,545.97	\$ 68,422.97	\$ 1,221.84	\$ 3,005.72	\$ 103,196.51	\$ 99,638.48	\$ (3,558.03)	\$ 182.91		
ADAMS 12 FIVE STAR SCHOO	5418	MALLEY DRIVE ELEMENTARY SCHOOL	448	81.03%	78%	\$ 29,178.24	\$ 65,359.26	\$ 1,167.13	\$ 2,871.14	\$ 98,575.77	\$ 94,359.04	\$ (4,216.72)	\$ 174.72		
ADAMS 12 FIVE STAR SCHOO	8842	THORNTON ELEMENTARY SCHOOL	393	80.15%	78%	\$ 25,596.09	\$ 57,335.24	\$ 1,023.84	\$ 2,518.66	\$ 86,473.83	\$ 82,036.45	\$ (4,437.39)	\$ 153.27	\$ 7,640.43	
ADAMS 12 FIVE STAR SCHOO	8310	STEM LAUNCH	773	78.40%	78%	\$ 50,345.49	\$ 112,773.90	\$ 2,013.82	\$ 4,954.00	\$ 170,087.20	\$ 158,440.45	\$ (11,646.76)	\$ 301.47		
ADAMS 12 FIVE STAR SCHOO	6398	NORTHGLENN MIDDLE SCHOOL	806	78.04%	78%	\$ 52,494.78	\$ 117,588.31	\$ 2,099.79	\$ 5,165.49	\$ 177,348.36	\$ 164,587.42	\$ (12,760.95)	\$ 314.34	\$ (24,407.70)	
ADAMS 12 FIVE STAR SCHOOLS Total			16%	6,948										\$ (16,767.28)	
BRIGHTON 27J	6294	NORTH ELEMENTARY SCHOOL	333	89.19%	78%	\$ 21,688.29	\$ 48,581.77	\$ 867.53	\$ 2,134.13	\$ 73,271.72	\$ 75,979.36	\$ 2,707.64	\$ 129.87	\$ 2,707.64	
BRIGHTON 27J	8060	SOUTH ELEMENTARY SCHOOL	508	77.36%	78%	\$ 33,086.04	\$ 74,112.73	\$ 1,323.44	\$ 3,255.67	\$ 111,777.88	\$ 102,995.28	\$ (8,782.60)	\$ 198.12	\$ (8,782.60)	
BRIGHTON 27J Total			18%	841										\$ (6,074.96)	
WESTMINSTER 50	7952	SKYLINE VISTA ELEMENTARY SCHOOL	341	94.43%	78%	\$ 22,209.33	\$ 49,748.90	\$ 888.37	\$ 2,185.40	\$ 75,032.00	\$ 81,644.36	\$ 6,612.36	\$ 132.99		
WESTMINSTER 50	3144	FRANCIS M. DAY ELEMENTARY SCHOOL	358	94.13%	78%	\$ 23,316.54	\$ 52,229.05	\$ 932.66	\$ 2,294.35	\$ 78,772.60	\$ 85,488.34	\$ 6,715.74	\$ 139.62		
WESTMINSTER 50	7860	SHERRWOOD ELEMENTARY SCHOOL	291	93.47%	78%	\$ 18,952.83	\$ 42,454.34	\$ 758.11	\$ 1,864.96	\$ 64,030.24	\$ 69,074.27	\$ 5,044.03	\$ 113.49		
WESTMINSTER 50	2876	FAIRVIEW ELEMENTARY SCHOOL	348	92.24%	78%	\$ 22,665.24	\$ 50,770.14	\$ 906.61	\$ 2,230.26	\$ 76,572.25	\$ 81,648.27	\$ 5,076.02	\$ 135.72		
WESTMINSTER 50	4465	JOSEPHINE HODGKINS ELEMENTARY SCHOOL	532	89.47%	78%	\$ 34,649.16	\$ 77,614.12	\$ 1,385.97	\$ 3,409.48	\$ 117,058.72	\$ 121,600.32	\$ 4,541.59	\$ 207.48		
WESTMINSTER 50	7305	IVER C. RANUM MIDDLE SCHOOL	772	89.12%	78%	\$ 50,280.36	\$ 112,628.01	\$ 2,011.21	\$ 4,947.59	\$ 169,867.17	\$ 175,991.68	\$ 6,124.51	\$ 301.08		
WESTMINSTER 50	5388	M. SCOTT CARPENTER MIDDLE SCHOOL	594	88.05%	78%	\$ 38,687.22	\$ 86,659.37	\$ 1,547.49	\$ 3,806.82	\$ 130,700.90	\$ 133,963.29	\$ 3,262.39	\$ 231.66		
WESTMINSTER 50	1622	CLARA E. METZ ELEMENTARY SCHOOL	360	87.50%	78%	\$ 23,446.80	\$ 52,520.83	\$ 937.87	\$ 2,307.17	\$ 79,212.67	\$ 80,796.37	\$ 1,583.70	\$ 140.40		
WESTMINSTER 50	9462	WESTMINSTER ELEMENTARY SCHOOL	266	84.96%	78%	\$ 17,324.58	\$ 38,807.06	\$ 692.98	\$ 1,704.74	\$ 58,529.36	\$ 58,239.25	\$ (290.12)	\$ 103.74		
WESTMINSTER 50	3792	HARRIS PARK ELEMENTARY SCHOOL	354	84.75%	78%	\$ 23,056.02	\$ 51,645.48	\$ 922.24	\$ 2,268.71	\$ 77,892.46	\$ 77,353.60	\$ (538.86)	\$ 138.06		
WESTMINSTER 50	8406	SUNSET RIDGE ELEMENTARY SCHOOL	363	84.02%	78%	\$ 23,642.19	\$ 52,958.51	\$ 945.69	\$ 2,326.39	\$ 79,872.77	\$ 78,720.03	\$ (1,152.75)	\$ 141.57		
WESTMINSTER 50	8798	TENNYSON KNOLLS ELEMENTARY SCHOOL	403	83.37%	78%	\$ 26,247.39	\$ 58,794.15	\$ 1,049.90	\$ 2,582.74	\$ 88,674.18	\$ 86,914.68	\$ (1,759.50)	\$ 157.17	\$ 35,219.13	
WESTMINSTER 50	7810	FLYNN ELEMENTARY SCHOOL	296	79.73%	78%	\$ 19,278.48	\$ 43,183.80	\$ 771.14	\$ 1,897.00	\$ 65,130.42	\$ 61,519.19	\$ (3,611.22)	\$ 115.44		
WESTMINSTER 50	7812	SHAW HEIGHTS MIDDLE SCHOOL	615	76.59%	78%	\$ 40,054.95	\$ 89,723.09	\$ 1,602.20	\$ 3,941.41	\$ 135,321.64	\$ 123,552.91	\$ (11,768.73)	\$ 239.85		
WESTMINSTER 50	9466	WESTMINSTER HIGH SCHOOL	2,388	74.75%	78%	\$ 155,530.44	\$ 348,388.19	\$ 6,221.22	\$ 15,304.20	\$ 525,444.04	\$ 469,760.55	\$ (55,683.49)	\$ 931.32	\$ (71,063.45)	
WESTMINSTER 50 Total			16%	8,281										\$ (35,844.32)	

Keep BAB@80%		COLORADO DEPARTMENT OF EDUCATION			Annual # Days	Percent of Students Served	Labor* Cost/MI	Food Cost/MI	Paper & Cleaning Cost/MI	Overhead (Indirect) Cost % of Expenses	Total Cost	Total Revenue	Net Income	Breakfast Labor Cost/Day	Annual Loss
BAB "Real" Cost of 20 Colorado Districts		FALL 2013 K-12 FREE AND REDUCED LUNCH ELIGIBILITY BY SCHOOL			167	78%	\$ 0.50	\$ 1.12	\$ 0.02	3%	Calculation	Calculation	Calculation	Calculation	Calculation
DISTRICT NAME	SCHOOL CODE	SCHOOL NAME	K-12 COUNT	% FREE AND REDUCED ELIGIBLE	Average Daily Meal Participatio n	* Labor Cost includes PERA, Medicare, and prorated cost of benefits.	Fruit 1/2 cup Brd/Mt 1-2 oz Milk 8 oz	Spoon Napkin, etc.	Orange-shaded schools fall into the 70-80% Free and Reduced eligibility.						
CHERRY CREEK 5	3988	HIGHLINE COMMUNITY ELEMENTARY SCHOOL	642	77.88%	78%	\$ 41,813.46	\$ 93,662.15	\$ 1,672.54	\$ 4,114.44	\$ 141,262.59	\$ 130,880.04	\$ (10,382.56)	\$ 250.38		
CHERRY CREEK 5	4062	HOLLY HILLS ELEMENTARY SCHOOL	660	76.21%	78%	\$ 42,985.80	\$ 96,288.19	\$ 1,719.43	\$ 4,229.80	\$ 145,223.23	\$ 132,181.34	\$ (13,041.89)	\$ 257.40	\$ (23,424.45)	
CHERRY CREEK 5 Total			23%	1,302											\$ (23,424.45)
ADAMS-ARAPAHOE 28J	2998	FLETCHER COMMUNITY SCHOOL	485	92.99%	78%	\$ 31,588.05	\$ 70,757.23	\$ 1,263.52	\$ 3,108.26	\$ 106,717.07	\$ 114,622.29	\$ 7,905.22	\$ 189.15		
ADAMS-ARAPAHOE 28J	0214	ALTURA ELEMENTARY SCHOOL	557	91.02%	78%	\$ 36,277.41	\$ 81,261.40	\$ 1,451.10	\$ 3,569.70	\$ 122,559.60	\$ 129,284.35	\$ 6,724.75	\$ 217.23		
ADAMS-ARAPAHOE 28J	6728	PARIS ELEMENTARY SCHOOL	461	90.89%	78%	\$ 30,024.93	\$ 67,255.84	\$ 1,201.00	\$ 2,954.45	\$ 101,436.22	\$ 106,686.85	\$ 5,250.62	\$ 179.79		
ADAMS-ARAPAHOE 28J	9396	AURORA WEST COLLEGE PREPARATORY	1,241	90.09%	78%	\$ 80,826.33	\$ 181,050.98	\$ 3,233.05	\$ 7,953.31	\$ 273,063.67	\$ 285,371.00	\$ 12,307.33	\$ 483.99		
ADAMS-ARAPAHOE 28J	2618	ELKHART ELEMENTARY SCHOOL	759	89.72%	78%	\$ 49,433.67	\$ 110,731.42	\$ 1,977.35	\$ 4,864.27	\$ 167,006.71	\$ 174,049.50	\$ 7,042.79	\$ 296.01		
ADAMS-ARAPAHOE 28J	9060	VAUGHN ELEMENTARY SCHOOL	532	89.66%	78%	\$ 34,649.16	\$ 77,614.12	\$ 1,385.97	\$ 3,409.48	\$ 117,058.72	\$ 121,888.19	\$ 4,829.47	\$ 207.48		
ADAMS-ARAPAHOE 28J	6068	MONTVIEW MATH & HEALTH SCIENCES	472	89.41%	78%	\$ 30,741.36	\$ 68,860.65	\$ 1,229.65	\$ 3,024.95	\$ 103,856.61	\$ 107,878.73	\$ 4,022.12	\$ 184.08		
ADAMS-ARAPAHOE 28J	1948	CRAWFORD ELEMENTARY SCHOOL	723	88.93%	78%	\$ 47,088.99	\$ 105,479.34	\$ 1,883.56	\$ 4,633.56	\$ 159,085.44	\$ 164,569.18	\$ 5,483.74	\$ 281.97		
ADAMS-ARAPAHOE 28J	3272	FULTON ACADEMY OF EXCELLENCE	494	88.66%	78%	\$ 32,174.22	\$ 72,070.25	\$ 1,286.97	\$ 3,165.94	\$ 108,697.38	\$ 112,119.99	\$ 3,422.61	\$ 192.66		
ADAMS-ARAPAHOE 28J	5361	LYN KNOLL ELEMENTARY SCHOOL	288	87.50%	78%	\$ 18,757.44	\$ 42,016.67	\$ 750.30	\$ 1,845.73	\$ 63,370.14	\$ 64,666.27	\$ 1,296.14	\$ 112.32		
ADAMS-ARAPAHOE 28J	8078	SOUTH MIDDLE SCHOOL	743	87.21%	78%	\$ 48,391.59	\$ 108,397.16	\$ 1,935.66	\$ 4,761.73	\$ 163,486.15	\$ 166,373.28	\$ 2,887.13	\$ 289.77		
ADAMS-ARAPAHOE 28J	7558	SABLE ELEMENTARY SCHOOL	508	86.61%	78%	\$ 33,086.04	\$ 74,112.73	\$ 1,323.44	\$ 3,255.67	\$ 111,777.88	\$ 113,096.94	\$ 1,319.06	\$ 198.12		
ADAMS-ARAPAHOE 28J	6869	PEORIA ELEMENTARY SCHOOL	551	86.21%	78%	\$ 35,886.63	\$ 80,386.05	\$ 1,435.47	\$ 3,531.24	\$ 121,239.39	\$ 122,187.79	\$ 948.40	\$ 214.89		
ADAMS-ARAPAHOE 28J	4970	LANSING ELEMENTARY COMMUNITY SC	415	86.02%	78%	\$ 27,028.95	\$ 60,544.85	\$ 1,081.16	\$ 2,659.65	\$ 91,314.60	\$ 91,865.87	\$ 551.26	\$ 161.85		
ADAMS-ARAPAHOE 28J	4646	KENTON ELEMENTARY SCHOOL	538	85.50%	78%	\$ 35,039.94	\$ 78,489.47	\$ 1,401.60	\$ 3,447.93	\$ 118,378.93	\$ 118,489.71	\$ 110.77	\$ 209.82		
ADAMS-ARAPAHOE 28J	2384	EAST MIDDLE SCHOOL	1,045	84.98%	78%	\$ 68,060.85	\$ 152,456.30	\$ 2,722.43	\$ 6,697.19	\$ 229,936.78	\$ 228,898.08	\$ (1,038.69)	\$ 407.55		
ADAMS-ARAPAHOE 28J	0914	BOSTON K-8 SCHOOL	474	84.18%	78%	\$ 30,871.62	\$ 69,152.43	\$ 1,234.86	\$ 3,037.77	\$ 104,296.68	\$ 103,044.78	\$ (1,251.90)	\$ 184.86		
ADAMS-ARAPAHOE 28J	7932	SIXTH AVENUE ELEMENTARY SCHOOL	630	84.13%	78%	\$ 41,031.90	\$ 91,911.46	\$ 1,641.28	\$ 4,037.54	\$ 138,622.17	\$ 136,853.76	\$ (1,768.41)	\$ 245.70		
ADAMS-ARAPAHOE 28J	6758	PARK LANE ELEMENTARY SCHOOL	324	83.95%	78%	\$ 21,102.12	\$ 47,268.75	\$ 844.08	\$ 2,076.45	\$ 71,291.40	\$ 70,277.88	\$ (1,013.53)	\$ 126.36		
ADAMS-ARAPAHOE 28J	9140	VIRGINIA COURT ELEMENTARY SCHOOL	540	83.70%	78%	\$ 35,170.20	\$ 78,781.25	\$ 1,406.81	\$ 3,460.75	\$ 118,819.00	\$ 116,843.22	\$ (1,975.78)	\$ 210.60		
ADAMS-ARAPAHOE 28J	6310	NORTH MIDDLE SCHOOL HEALTH SCIEN	879	82.94%	78%	\$ 57,249.27	\$ 128,238.36	\$ 2,289.97	\$ 5,633.33	\$ 193,410.93	\$ 188,706.36	\$ (4,704.57)	\$ 342.81		
ADAMS-ARAPAHOE 28J	4973	LAREDO ELEMENTARY SCHOOL	535	82.06%	78%	\$ 34,844.55	\$ 78,051.79	\$ 1,393.78	\$ 3,428.70	\$ 117,718.83	\$ 113,793.83	\$ (3,924.99)	\$ 208.65		
ADAMS-ARAPAHOE 28J	9514	WHEELING ELEMENTARY SCHOOL	590	80.85%	78%	\$ 38,426.70	\$ 86,075.81	\$ 1,537.07	\$ 3,781.19	\$ 129,820.76	\$ 124,003.61	\$ (5,817.15)	\$ 230.10	\$ 42,606.38	
ADAMS-ARAPAHOE 28J	6219	NEW AMERICA SCHOOL	434	79.95%	78%	\$ 28,266.42	\$ 63,316.78	\$ 1,130.66	\$ 2,781.42	\$ 95,495.27	\$ 90,081.30	\$ (5,413.97)	\$ 169.26		
ADAMS-ARAPAHOE 28J	8858	TOLLGATE ELEMENTARY SCHOOL OF EX	731	78.93%	78%	\$ 47,610.03	\$ 106,646.47	\$ 1,904.40	\$ 4,684.83	\$ 160,845.73	\$ 150,675.65	\$ (10,170.08)	\$ 285.09		
ADAMS-ARAPAHOE 28J	0464	AURORA HILLS MIDDLE SCHOOL	930	76.77%	78%	\$ 60,570.90	\$ 135,678.82	\$ 2,422.84	\$ 5,960.18	\$ 204,632.73	\$ 187,379.01	\$ (17,253.72)	\$ 362.70		
ADAMS-ARAPAHOE 28J	4024	HINKLEY HIGH SCHOOL	2,094	74.26%	78%	\$ 136,382.22	\$ 305,496.17	\$ 5,455.29	\$ 13,420.01	\$ 460,753.69	\$ 410,150.96	\$ (50,602.73)	\$ 816.66		
ADAMS-ARAPAHOE 28J	4270	IOWA ELEMENTARY SCHOOL	472	72.88%	78%	\$ 30,741.36	\$ 68,860.65	\$ 1,229.65	\$ 3,024.95	\$ 103,856.61	\$ 91,150.74	\$ (12,705.87)	\$ 184.08		
ADAMS-ARAPAHOE 28J	1470	CENTURY ELEMENTARY SCHOOL	355	72.11%	78%	\$ 23,121.15	\$ 51,791.38	\$ 924.85	\$ 2,275.12	\$ 78,112.49	\$ 67,969.67	\$ (10,142.83)	\$ 138.45		
ADAMS-ARAPAHOE 28J	6160	MRACHEK MIDDLE SCHOOL	909	71.73%	78%	\$ 59,203.17	\$ 132,615.10	\$ 2,368.13	\$ 5,825.59	\$ 200,011.99	\$ 173,214.54	\$ (26,797.45)	\$ 354.51		
ADAMS-ARAPAHOE 28J	1720	CLYDE MILLER K-8	545	71.38%	78%	\$ 35,495.85	\$ 79,510.70	\$ 1,419.83	\$ 3,492.79	\$ 119,919.18	\$ 103,485.06	\$ (16,434.12)	\$ 212.55		
ADAMS-ARAPAHOE 28J	9756	YALE ELEMENTARY SCHOOL	465	70.75%	78%	\$ 30,285.45	\$ 67,839.41	\$ 1,211.42	\$ 2,980.09	\$ 102,316.36	\$ 87,671.49	\$ (14,644.87)	\$ 181.35		
ADAMS-ARAPAHOE 28J	1458	AURORA CENTRAL HIGH SCHOOL	2,120	70.61%	78%	\$ 138,075.60	\$ 309,289.34	\$ 5,523.02	\$ 13,586.64	\$ 466,474.61	\$ 396,590.90	\$ (69,883.71)	\$ 826.80	\$ (234,049.34)	
ADAMS-ARAPAHOE 28J Total			18%	22,839											\$ (191,442.97)
ST VRAIN VALLEY RE 1J	4278	INDIAN PEAKS ELEMENTARY SCHOOL	374	94.65%	78%	\$ 24,358.62	\$ 54,563.31	\$ 974.34	\$ 2,396.89	\$ 82,293.16	\$ 89,725.69	\$ 7,432.53	\$ 145.86		
ST VRAIN VALLEY RE 1J	1844	COLUMBINE ELEMENTARY SCHOOL	339	92.33%	78%	\$ 22,079.07	\$ 49,457.12	\$ 883.16	\$ 2,172.58	\$ 74,591.93	\$ 79,637.06	\$ 5,045.13	\$ 132.21		
ST VRAIN VALLEY RE 1J	6404	NORTHBRIDGE ELEMENTARY SCHOOL	346	90.17%	78%	\$ 22,534.98	\$ 50,478.36	\$ 901.40	\$ 2,217.44	\$ 76,132.18	\$ 79,677.44	\$ 3,545.26	\$ 134.94		
ST VRAIN VALLEY RE 1J	6010	TIMBERLINE PK-8	966	88.92%	78%	\$ 62,915.58	\$ 140,930.90	\$ 2,516.62	\$ 6,190.89	\$ 212,554.00	\$ 219,710.84	\$ 7,156.85	\$ 376.74		
ST VRAIN VALLEY RE 1J	7464	ROCKY MOUNTAIN ELEMENTARY SCHOOL	377	88.33%	78%	\$ 24,554.01	\$ 55,000.98	\$ 982.16	\$ 2,416.11	\$ 82,953.27	\$ 85,321.60	\$ 2,368.34	\$ 147.03		
ST VRAIN VALLEY RE 1J	5288	LONGS PEAK MIDDLE SCHOOL	432	83.80%	78%	\$ 28,136.16	\$ 63,025.00	\$ 1,125.45	\$ 2,768.60	\$ 95,055.20	\$ 93,560.55	\$ (1,494.66)	\$ 168.48		
ST VRAIN VALLEY RE 1J	5364	LYONS ELEMENTARY SCHOOL	308	83.44%	78%	\$ 20,060.04	\$ 44,934.49	\$ 802.40	\$ 1,973.91	\$ 67,770.84	\$ 66,251.54	\$ (1,519.30)	\$ 120.12	\$ 22,534.15	

Keep BAB@80%		COLORADO DEPARTMENT OF EDUCATION			Annual # Days	Percent of Students Served	Labor* Cost/MI	Food Cost/MI	Paper & Cleaning Cost/MI	Overhead (Indirect) Cost % of Expenses	Total Cost	Total Revenue	Net Income	Breakfast Labor Cost/Day	Annual Loss
BAB "Real" Cost of 20 Colorado Districts		FALL 2013 K-12 FREE AND REDUCED LUNCH ELIGIBILITY BY SCHOOL			167	78%	\$ 0.50	\$ 1.12	\$ 0.02	3%	Calculation	Calculation	Calculation	Calculation	Calculation
DISTRICT NAME	SCHOOL CODE	SCHOOL NAME	K-12 COUNT	% FREE AND REDUCED ELIGIBLE	Average Daily Meal Participatio n	* Labor Cost includes PERA, Medicare, and prorated cost of benefits.	Fruit 1/2 cup Brd/Mt 1-2 oz Milk 8 oz	Spoon Napkin, etc.	Orange-shaded schools fall into the 70-80% Free and Reduced eligibility.						
ST VRAIN VALLEY RE 1J	6156	MOUNTAIN VIEW ELEMENTARY SCHOOL	389	78.92%	78%	\$ 25,335.57	\$ 56,751.68	\$ 1,013.42	\$ 2,493.02	\$ 85,593.69	\$ 80,171.12	\$ (5,422.57)	\$ 151.71		
ST VRAIN VALLEY RE 1J	5368	LYONS MIDDLE/SENIOR HIGH SCHOOL	405	74.57%	78%	\$ 26,377.65	\$ 59,085.94	\$ 1,055.11	\$ 2,595.56	\$ 89,114.25	\$ 79,643.57	\$ (9,470.68)	\$ 157.95		
ST VRAIN VALLEY RE 1J	6498	OLDE COLUMBINE HIGH SCHOOL	105	72.38%	78%	\$ 6,838.65	\$ 15,318.58	\$ 273.55	\$ 672.92	\$ 23,103.70	\$ 20,127.78	\$ (2,975.92)	\$ 40.95	\$ (17,869.17)	
ST VRAIN VALLEY RE 1J Total			14%	4,041										\$ 4,664.98	
BOULDER VALLEY RE 2	7592	SANCHEZ ELEMENTARY SCHOOL	289	72.32%	78%	\$ 18,822.57	\$ 42,162.56	\$ 752.90	\$ 1,852.14	\$ 63,590.17	\$ 55,424.33	\$ (8,165.84)	\$ 112.71	\$ (8,165.84)	
BOULDER VALLEY RE 2 Total			27%	289										\$ (8,165.84)	
DENVER COUNTY 1	0040	RIDGE VIEW ACADEMY CHARTER SCHOOL	238	99.58%	78%	\$ 15,500.94	\$ 34,722.11	\$ 620.04	\$ 1,525.29	\$ 52,368.38	\$ 59,582.23	\$ 7,213.85	\$ 92.82		
DENVER COUNTY 1	4732	KIPP SUNSHINE PEAK ACADEMY	376	98.94%	78%	\$ 24,488.88	\$ 54,855.09	\$ 979.56	\$ 2,409.71	\$ 82,733.23	\$ 93,667.36	\$ 10,934.13	\$ 146.64		
DENVER COUNTY 1	6188	MUNROE ELEMENTARY SCHOOL	614	98.86%	78%	\$ 39,989.82	\$ 89,577.20	\$ 1,599.59	\$ 3,935.00	\$ 135,101.61	\$ 152,856.20	\$ 17,754.59	\$ 239.46		
DENVER COUNTY 1	1528	CHELTENHAM ELEMENTARY SCHOOL	468	98.72%	78%	\$ 30,480.84	\$ 68,277.08	\$ 1,219.23	\$ 2,999.31	\$ 102,976.47	\$ 116,330.00	\$ 13,353.53	\$ 182.52		
DENVER COUNTY 1	9496	CASTRO ELEMENTARY SCHOOL	603	98.67%	78%	\$ 39,273.39	\$ 87,972.39	\$ 1,570.94	\$ 3,864.50	\$ 132,681.22	\$ 149,839.38	\$ 17,158.16	\$ 235.17		
DENVER COUNTY 1	2880	FAIRVIEW ELEMENTARY SCHOOL	222	98.65%	78%	\$ 14,458.86	\$ 32,387.85	\$ 578.35	\$ 1,422.75	\$ 48,847.81	\$ 55,166.41	\$ 6,318.60	\$ 86.58		
DENVER COUNTY 1	4656	KEPNER MIDDLE SCHOOL	796	98.49%	78%	\$ 51,843.48	\$ 116,129.40	\$ 2,073.74	\$ 5,101.40	\$ 175,148.01	\$ 197,463.74	\$ 22,315.73	\$ 310.44		
DENVER COUNTY 1	8006	SMITH RENAISSANCE SCHOOL	355	98.31%	78%	\$ 23,121.15	\$ 51,791.38	\$ 924.85	\$ 2,275.12	\$ 78,112.49	\$ 87,958.07	\$ 9,845.57	\$ 138.45		
DENVER COUNTY 1	9050	VALVERDE ELEMENTARY SCHOOL	348	97.99%	78%	\$ 22,665.24	\$ 50,770.14	\$ 906.61	\$ 2,230.26	\$ 76,572.25	\$ 85,946.85	\$ 9,374.60	\$ 135.72		
DENVER COUNTY 1	8422	SWANSEA ELEMENTARY SCHOOL	519	97.88%	78%	\$ 33,802.47	\$ 75,717.53	\$ 1,352.10	\$ 3,326.16	\$ 114,198.26	\$ 128,113.32	\$ 13,915.05	\$ 202.41		
DENVER COUNTY 1	7694	CHARLES M. SCHENCK (CMS) COMMUN	500	97.80%	78%	\$ 32,565.00	\$ 72,945.60	\$ 1,302.60	\$ 3,204.40	\$ 110,017.60	\$ 123,300.21	\$ 13,282.61	\$ 195.00		
DENVER COUNTY 1	4762	KNAPP ELEMENTARY SCHOOL	620	97.74%	78%	\$ 40,380.60	\$ 90,452.54	\$ 1,615.22	\$ 3,973.45	\$ 136,421.82	\$ 152,823.64	\$ 16,401.82	\$ 241.80		
DENVER COUNTY 1	6350	BRUCE RANDOLPH SCHOOL	870	97.70%	78%	\$ 56,663.10	\$ 126,925.34	\$ 2,266.52	\$ 5,575.65	\$ 191,430.62	\$ 214,384.51	\$ 22,953.90	\$ 339.30		
DENVER COUNTY 1	4450	JOHNSON ELEMENTARY SCHOOL	417	97.36%	78%	\$ 27,159.21	\$ 60,836.63	\$ 1,086.37	\$ 2,672.47	\$ 91,754.68	\$ 102,470.33	\$ 10,715.66	\$ 162.63		
DENVER COUNTY 1	9702	WEST LEADERSHIP ACADEMY	367	97.28%	78%	\$ 23,902.71	\$ 53,542.07	\$ 956.11	\$ 2,352.03	\$ 80,752.92	\$ 90,005.75	\$ 9,252.84	\$ 143.13		
DENVER COUNTY 1	1774	COLFAX ELEMENTARY SCHOOL	329	97.26%	78%	\$ 21,427.77	\$ 47,998.20	\$ 857.11	\$ 2,108.49	\$ 72,391.58	\$ 80,776.83	\$ 8,385.25	\$ 128.31		
DENVER COUNTY 1	5685	MCGLONE ELEMENTARY SCHOOL	620	97.26%	78%	\$ 40,380.60	\$ 90,452.54	\$ 1,615.22	\$ 3,973.45	\$ 136,421.82	\$ 152,215.32	\$ 15,793.50	\$ 241.80		
DENVER COUNTY 1	5608	MATHEMATICS AND SCIENCE LEADERSH	282	97.16%	78%	\$ 18,366.66	\$ 41,141.32	\$ 734.67	\$ 1,807.28	\$ 62,049.92	\$ 69,175.88	\$ 7,125.95	\$ 109.98		
DENVER COUNTY 1	0220	AMESSE ELEMENTARY SCHOOL	507	97.04%	78%	\$ 33,020.91	\$ 73,966.84	\$ 1,320.84	\$ 3,249.26	\$ 111,557.84	\$ 124,200.30	\$ 12,642.46	\$ 197.73		
DENVER COUNTY 1	1788	COLLEGE VIEW ELEMENTARY SCHOOL	388	96.91%	78%	\$ 25,270.44	\$ 56,605.79	\$ 1,010.82	\$ 2,486.61	\$ 85,373.65	\$ 94,964.75	\$ 9,591.10	\$ 151.32		
DENVER COUNTY 1	9693	WEST GENERATIONS ACADEMY	449	96.88%	78%	\$ 29,243.37	\$ 65,505.15	\$ 1,169.73	\$ 2,877.55	\$ 98,795.80	\$ 109,870.40	\$ 11,074.60	\$ 175.11		
DENVER COUNTY 1	3296	GARDEN PLACE ELEMENTARY SCHOOL	371	96.77%	78%	\$ 24,163.23	\$ 54,125.64	\$ 966.53	\$ 2,377.66	\$ 81,633.06	\$ 90,654.45	\$ 9,021.39	\$ 144.69		
DENVER COUNTY 1	0010	ABRAHAM LINCOLN HIGH SCHOOL	1,509	96.69%	78%	\$ 98,281.17	\$ 220,149.82	\$ 3,931.25	\$ 9,670.87	\$ 332,033.10	\$ 368,509.45	\$ 36,476.34	\$ 588.51		
DENVER COUNTY 1	8085	STRIVE PREP - FEDERAL	362	96.41%	78%	\$ 23,577.06	\$ 52,812.61	\$ 943.08	\$ 2,319.98	\$ 79,652.74	\$ 88,213.37	\$ 8,560.64	\$ 141.18		
DENVER COUNTY 1	7045	PLACE BRIDGE ACADEMY	1,023	96.38%	78%	\$ 66,627.99	\$ 149,246.70	\$ 2,665.12	\$ 6,556.19	\$ 225,096.00	\$ 249,231.67	\$ 24,135.67	\$ 398.97		
DENVER COUNTY 1	3655	GREENLEE ELEMENTARY SCHOOL	302	96.36%	78%	\$ 19,669.26	\$ 44,059.14	\$ 786.77	\$ 1,935.46	\$ 66,450.63	\$ 73,486.18	\$ 7,035.55	\$ 117.78		
DENVER COUNTY 1	3478	GODSMAN ELEMENTARY SCHOOL	515	96.31%	78%	\$ 33,541.95	\$ 75,133.97	\$ 1,341.68	\$ 3,300.53	\$ 113,318.12	\$ 125,388.28	\$ 12,070.15	\$ 200.85		
DENVER COUNTY 1	2205	DCIS AT FORD	582	96.22%	78%	\$ 37,905.66	\$ 84,908.68	\$ 1,516.23	\$ 3,729.92	\$ 128,060.48	\$ 141,550.94	\$ 13,490.46	\$ 226.98		
DENVER COUNTY 1	6957	PIONEER CHARTER SCHOOL	471	96.18%	78%	\$ 30,676.23	\$ 68,714.76	\$ 1,227.05	\$ 3,018.54	\$ 103,636.58	\$ 114,541.53	\$ 10,904.95	\$ 183.69		
DENVER COUNTY 1	5255	LAKE INTERNATIONAL SCHOOL	386	96.11%	78%	\$ 25,140.18	\$ 56,314.00	\$ 1,005.61	\$ 2,473.79	\$ 84,933.58	\$ 93,707.74	\$ 8,774.16	\$ 150.54		
DENVER COUNTY 1	1928	COWELL ELEMENTARY SCHOOL	445	95.96%	78%	\$ 28,982.85	\$ 64,921.58	\$ 1,159.31	\$ 2,851.91	\$ 97,915.66	\$ 107,895.66	\$ 9,980.00	\$ 173.55		
DENVER COUNTY 1	9739	WYATT ACADEMY	588	95.92%	78%	\$ 38,296.44	\$ 85,784.03	\$ 1,531.86	\$ 3,768.37	\$ 129,380.69	\$ 142,665.96	\$ 13,285.27	\$ 229.32		
DENVER COUNTY 1	3512	GOLDRICK ELEMENTARY SCHOOL	571	95.80%	78%	\$ 37,189.23	\$ 83,303.88	\$ 1,487.57	\$ 3,659.42	\$ 125,640.09	\$ 138,392.13	\$ 12,752.04	\$ 222.69		
DENVER COUNTY 1	3032	FORCE ELEMENTARY SCHOOL	515	95.73%	78%	\$ 33,541.95	\$ 75,133.97	\$ 1,341.68	\$ 3,300.53	\$ 113,318.12	\$ 124,743.49	\$ 11,425.37	\$ 200.85		
DENVER COUNTY 1	0418	ASHLEY ELEMENTARY SCHOOL	303	95.71%	78%	\$ 19,734.39	\$ 44,205.03	\$ 789.38	\$ 1,941.86	\$ 66,670.66	\$ 73,380.67	\$ 6,710.01	\$ 118.17		
DENVER COUNTY 1	8909	TREVISTA ECE-8 AT HORACE MANN	481	95.63%	78%	\$ 31,327.53	\$ 70,173.67	\$ 1,253.10	\$ 3,082.63	\$ 105,836.93	\$ 116,337.81	\$ 10,500.88	\$ 187.59		
DENVER COUNTY 1	3778	HARRINGTON ELEMENTARY SCHOOL	380	95.53%	78%	\$ 24,749.40	\$ 55,438.66	\$ 989.98	\$ 2,435.34	\$ 83,613.37	\$ 91,878.89	\$ 8,265.52	\$ 148.20		
DENVER COUNTY 1	0520	BARNUM ELEMENTARY SCHOOL	456	95.39%	78%	\$ 29,699.28	\$ 66,526.39	\$ 1,187.97	\$ 2,922.41	\$ 100,336.05	\$ 110,125.71	\$ 9,789.66	\$ 177.84		

Keep BAB@80%		COLORADO DEPARTMENT OF EDUCATION			Annual # Days	Percent of Students Served	Labor* Cost/Mi	Food Cost/Mi	Paper & Cleaning Cost/Mi	Overhead (Indirect) Cost % of Expenses	Total Cost	Total Revenue	Net Income	Breakfast Labor Cost/Day	Annual Loss
BAB "Real" Cost of 20 Colorado Districts		FALL 2013 K-12 FREE AND REDUCED LUNCH ELIGIBILITY BY SCHOOL			167	78%	\$ 0.50	\$ 1.12	\$ 0.02	3%	Calculation	Calculation	Calculation	Calculation	Calculation
DISTRICT NAME	SCHOOL CODE	SCHOOL NAME	K-12 COUNT	% FREE AND REDUCED ELIGIBLE	Average Daily Meal Participation	* Labor Cost Includes PERA, Medicare, and prorated cost of benefits.	Fruit 1/2 cup Brd/Mt 1-2 oz Milk 8 oz	Spoon Napkin, etc.	Orange-shaded schools fall into the 70-80% Free and Reduced eligibility.						
DENVER COUNTY 1	5644	MAXWELL ELEMENTARY SCHOOL	473	95.35%	78%	\$ 30,806.49	\$ 69,006.54	\$ 1,232.26	\$ 3,031.36	\$ 104,076.65	\$ 114,184.61	\$ 10,107.97	\$ 184.47		
DENVER COUNTY 1	2364	EAGLETON ELEMENTARY SCHOOL	419	95.23%	78%	\$ 27,289.47	\$ 61,128.41	\$ 1,091.58	\$ 2,685.28	\$ 92,194.75	\$ 101,002.30	\$ 8,807.56	\$ 163.41		
DENVER COUNTY 1	3647	MARIE L. GREENWOOD ACADEMY	666	95.20%	78%	\$ 43,376.58	\$ 97,163.54	\$ 1,735.06	\$ 4,268.26	\$ 146,543.44	\$ 160,555.87	\$ 14,012.43	\$ 259.74		
DENVER COUNTY 1	8131	SOAR AT OAKLAND	510	94.90%	78%	\$ 33,216.30	\$ 74,404.51	\$ 1,328.65	\$ 3,268.48	\$ 112,217.95	\$ 122,626.76	\$ 10,408.82	\$ 198.90		
DENVER COUNTY 1	1785	COLE ARTS AND SCIENCE ACADEMY	468	94.87%	78%	\$ 30,480.84	\$ 68,277.08	\$ 1,219.23	\$ 2,999.31	\$ 102,976.47	\$ 112,497.75	\$ 9,521.28	\$ 182.52		
DENVER COUNTY 1	1866	ACE COMMUNITY CHALLENGE SCHOOL	205	94.63%	78%	\$ 13,351.65	\$ 29,907.70	\$ 534.07	\$ 1,313.80	\$ 45,107.21	\$ 49,173.15	\$ 4,065.94	\$ 79.95		
DENVER COUNTY 1	9389	STRIVE PREP - WESTWOOD	371	94.61%	78%	\$ 24,163.23	\$ 54,125.64	\$ 966.53	\$ 2,377.66	\$ 81,633.06	\$ 88,971.49	\$ 7,338.43	\$ 144.69		
DENVER COUNTY 1	2258	DOULL ELEMENTARY SCHOOL	468	94.44%	78%	\$ 30,480.84	\$ 68,277.08	\$ 1,219.23	\$ 2,999.31	\$ 102,976.47	\$ 112,067.89	\$ 9,091.42	\$ 182.52		
DENVER COUNTY 1	8817	VENTURE PREP MIDDLE SCHOOL	108	94.44%	78%	\$ 7,034.04	\$ 15,756.25	\$ 281.36	\$ 692.15	\$ 23,763.80	\$ 25,861.82	\$ 2,098.02	\$ 42.12		
DENVER COUNTY 1	9390	STRIVE PREP - LAKE	333	94.29%	78%	\$ 21,688.29	\$ 48,581.77	\$ 867.53	\$ 2,134.13	\$ 73,271.72	\$ 79,633.15	\$ 6,361.43	\$ 129.87		
DENVER COUNTY 1	1816	COLUMBIAN ELEMENTARY SCHOOL	241	94.19%	78%	\$ 15,696.33	\$ 35,159.78	\$ 627.85	\$ 1,544.52	\$ 53,028.48	\$ 57,578.83	\$ 4,550.35	\$ 93.99		
DENVER COUNTY 1	1846	COLUMBINE ELEMENTARY SCHOOL	186	94.09%	78%	\$ 12,114.18	\$ 27,135.76	\$ 484.57	\$ 1,192.04	\$ 40,926.55	\$ 44,396.52	\$ 3,469.97	\$ 72.54		
DENVER COUNTY 1	0540	BARRETT ELEMENTARY SCHOOL	166	93.98%	78%	\$ 10,811.58	\$ 24,217.94	\$ 432.46	\$ 1,063.86	\$ 36,525.84	\$ 39,583.41	\$ 3,057.57	\$ 64.74		
DENVER COUNTY 1	6254	NEWLON ELEMENTARY SCHOOL	518	93.82%	78%	\$ 33,737.34	\$ 75,571.64	\$ 1,349.49	\$ 3,319.75	\$ 113,978.23	\$ 123,348.40	\$ 9,370.17	\$ 202.02		
DENVER COUNTY 1	9548	WHITTIER K-8 SCHOOL	274	93.80%	78%	\$ 17,845.62	\$ 39,974.19	\$ 713.82	\$ 1,756.01	\$ 60,289.64	\$ 65,230.30	\$ 4,940.66	\$ 106.86		
DENVER COUNTY 1	7698	SCHMITT ELEMENTARY SCHOOL	386	93.78%	78%	\$ 25,140.18	\$ 56,314.00	\$ 1,005.61	\$ 2,473.79	\$ 84,933.58	\$ 91,882.80	\$ 6,949.21	\$ 150.54		
DENVER COUNTY 1	4140	FARRELL B. HOWELL ECE-8 SCHOOL	765	93.73%	78%	\$ 49,824.45	\$ 111,606.77	\$ 1,992.98	\$ 4,902.73	\$ 168,326.92	\$ 182,005.79	\$ 13,678.86	\$ 298.35		
DENVER COUNTY 1	9408	WEST HIGH SCHOOL	207	93.72%	78%	\$ 13,481.91	\$ 30,199.48	\$ 539.28	\$ 1,326.62	\$ 45,547.28	\$ 49,209.62	\$ 3,662.34	\$ 80.73		
DENVER COUNTY 1	2652	ELLIS ELEMENTARY SCHOOL	463	93.52%	78%	\$ 30,155.19	\$ 67,547.63	\$ 1,206.21	\$ 2,967.27	\$ 101,876.29	\$ 109,951.16	\$ 8,074.87	\$ 180.57		
DENVER COUNTY 1	9735	STRIVE PREP - MONTBELLO	224	93.30%	78%	\$ 14,589.12	\$ 32,679.63	\$ 583.56	\$ 1,435.57	\$ 49,287.88	\$ 53,090.07	\$ 3,802.19	\$ 87.36		
DENVER COUNTY 1	3704	GUST ELEMENTARY SCHOOL	646	92.72%	78%	\$ 42,073.98	\$ 94,245.72	\$ 1,682.96	\$ 4,140.08	\$ 142,142.73	\$ 152,230.95	\$ 10,088.22	\$ 251.94		
DENVER COUNTY 1	4782	HALLETT FUNDAMENTAL ACADEMY	302	92.05%	78%	\$ 19,669.26	\$ 44,059.14	\$ 786.77	\$ 1,935.46	\$ 66,450.63	\$ 70,765.05	\$ 4,314.42	\$ 117.78		
DENVER COUNTY 1	4507	KIPP MONTBELLO COLLEGE PREP	290	91.72%	78%	\$ 18,887.70	\$ 42,308.45	\$ 755.51	\$ 1,858.55	\$ 63,810.21	\$ 67,748.23	\$ 3,938.02	\$ 113.10		
DENVER COUNTY 1	4730	KIPP DENVER COLLEGIATE HIGH SCHOOL	354	91.53%	78%	\$ 23,056.02	\$ 51,645.48	\$ 922.24	\$ 2,268.71	\$ 77,892.46	\$ 82,511.89	\$ 4,619.44	\$ 138.06		
DENVER COUNTY 1	2789	ESCUELA TLATELOLCO SCHOOL	129	90.70%	78%	\$ 8,401.77	\$ 18,819.96	\$ 336.07	\$ 826.73	\$ 28,384.54	\$ 29,851.68	\$ 1,467.14	\$ 50.31		
DENVER COUNTY 1	3340	ARCHULETA ELEMENTARY SCHOOL	628	90.45%	78%	\$ 40,901.64	\$ 91,619.67	\$ 1,636.07	\$ 4,024.72	\$ 138,182.10	\$ 144,984.59	\$ 6,802.49	\$ 244.92		
DENVER COUNTY 1	9336	STRIVE PREP - SUNNYSIDE	320	90.00%	78%	\$ 20,841.60	\$ 46,685.18	\$ 833.66	\$ 2,050.81	\$ 70,411.26	\$ 73,570.85	\$ 3,159.59	\$ 124.80		
DENVER COUNTY 1	8347	STRIVE PREP - EXCEL	127	89.76%	78%	\$ 8,271.51	\$ 18,528.18	\$ 330.86	\$ 813.92	\$ 27,944.47	\$ 29,133.95	\$ 1,189.48	\$ 49.53		
DENVER COUNTY 1	9639	STRIVE PREP - SMART ACADEMY	319	89.66%	78%	\$ 20,776.47	\$ 46,539.29	\$ 831.06	\$ 2,044.40	\$ 70,191.23	\$ 73,104.52	\$ 2,913.29	\$ 124.41		
DENVER COUNTY 1	3000	FLORENCE CRITTENTON HIGH SCHOOL	123	89.43%	78%	\$ 8,010.99	\$ 17,944.62	\$ 320.44	\$ 788.28	\$ 27,064.33	\$ 27,727.14	\$ 662.81	\$ 47.97		
DENVER COUNTY 1	6308	NORTH HIGH SCHOOL ENGAGEMENT CENTER	132	89.39%	78%	\$ 8,597.16	\$ 19,257.64	\$ 343.89	\$ 845.96	\$ 29,044.65	\$ 30,066.61	\$ 1,021.97	\$ 51.48		
DENVER COUNTY 1	1106	BRYANT WEBSTER K-8 SCHOOL	422	89.34%	78%	\$ 27,484.86	\$ 61,566.09	\$ 1,099.39	\$ 2,704.51	\$ 92,854.85	\$ 96,419.75	\$ 3,564.90	\$ 164.58		
DENVER COUNTY 1	0650	BEACH COURT ELEMENTARY SCHOOL	290	88.97%	78%	\$ 18,887.70	\$ 42,308.45	\$ 755.51	\$ 1,858.55	\$ 63,810.21	\$ 65,955.85	\$ 2,145.64	\$ 113.10		
DENVER COUNTY 1	2209	DCIS AT MONTBELLO	723	88.80%	78%	\$ 47,088.99	\$ 105,479.34	\$ 1,883.56	\$ 4,633.56	\$ 159,085.44	\$ 164,062.47	\$ 4,977.03	\$ 281.97		
DENVER COUNTY 1	5605	MARTIN LUTHER KING JR. EARLY COLLEGE	1,152	88.45%	78%	\$ 75,029.76	\$ 168,066.66	\$ 3,001.19	\$ 7,382.93	\$ 253,480.54	\$ 260,992.84	\$ 7,512.30	\$ 449.28		
DENVER COUNTY 1	3600	GRANT BEACON MIDDLE SCHOOL	444	88.29%	78%	\$ 28,917.72	\$ 64,775.69	\$ 1,156.71	\$ 2,845.50	\$ 97,695.63	\$ 100,409.62	\$ 2,713.99	\$ 173.16		
DENVER COUNTY 1	1345	CESAR CHAVEZ ACADEMY DENVER	473	88.16%	78%	\$ 30,806.49	\$ 69,006.54	\$ 1,232.26	\$ 3,031.36	\$ 104,076.65	\$ 106,877.03	\$ 2,800.38	\$ 184.47		
DENVER COUNTY 1	6239	NOEL COMMUNITY ARTS SCHOOL	587	87.90%	78%	\$ 38,231.31	\$ 85,638.13	\$ 1,529.25	\$ 3,761.96	\$ 129,160.66	\$ 132,276.42	\$ 3,115.77	\$ 228.93		
DENVER COUNTY 1	4381	DSST: COLLEGE VIEW	303	87.46%	78%	\$ 19,734.39	\$ 44,205.03	\$ 789.38	\$ 1,941.86	\$ 66,670.66	\$ 68,007.44	\$ 1,336.78	\$ 118.17		
DENVER COUNTY 1	1319	CEC MIDDLE COLLEGE OF DENVER	422	87.20%	78%	\$ 27,484.86	\$ 61,566.09	\$ 1,099.39	\$ 2,704.51	\$ 92,854.85	\$ 94,485.39	\$ 1,630.54	\$ 164.58		
DENVER COUNTY 1	2349	ESCALANTE-BIGGS ACADEMY	147	87.07%	78%	\$ 9,574.11	\$ 21,446.01	\$ 382.96	\$ 942.09	\$ 32,345.17	\$ 32,872.41	\$ 527.24	\$ 57.33		
DENVER COUNTY 1	4074	HOLM ELEMENTARY SCHOOL	555	86.85%	78%	\$ 36,147.15	\$ 80,969.62	\$ 1,445.89	\$ 3,556.88	\$ 122,119.53	\$ 123,801.71	\$ 1,682.18	\$ 216.45		
DENVER COUNTY 1	8054	HENRY WORLD SCHOOL GRADES 6-8	787	86.66%	78%	\$ 51,257.31	\$ 114,816.37	\$ 2,050.29	\$ 5,043.72	\$ 173,167.70	\$ 175,285.67	\$ 2,117.98	\$ 306.93		
DENVER COUNTY 1	5716	MC MEEN ELEMENTARY SCHOOL	536	86.57%	78%	\$ 34,909.68	\$ 78,197.68	\$ 1,396.39	\$ 3,435.11	\$ 117,938.86	\$ 119,240.00	\$ 1,301.14	\$ 209.04		
DENVER COUNTY 1	8232	STEDMAN ELEMENTARY SCHOOL	307	86.32%	78%	\$ 19,994.91	\$ 44,788.60	\$ 799.80	\$ 1,967.50	\$ 67,550.80	\$ 68,153.33	\$ 602.53	\$ 119.73		

Keep BAB@80%		COLORADO DEPARTMENT OF EDUCATION			Annual # Days	Percent of Students Served	Labor* Cost/MI	Food Cost/MI	Paper & Cleaning Cost/MI	Overhead (Indirect) Cost % of Expenses	Total Cost	Total Revenue	Net Income	Breakfast Labor Cost/Day	Annual Loss
BAB "Real" Cost of 20 Colorado Districts		FALL 2013 K-12 FREE AND REDUCED LUNCH ELIGIBILITY BY SCHOOL			167	78%	\$ 0.50	\$ 1.12	\$ 0.02	3%	Calculation	Calculation	Calculation	Calculation	Calculation
DISTRICT NAME	SCHOOL CODE	SCHOOL NAME	K-12 COUNT	% FREE AND REDUCED ELIGIBLE	Average Daily Meal Participatio n	* Labor Cost includes PERA, Medicare, and prorated cost of benefits.	Fruit 1/2 cup Brd/Mt 1-2 oz Milk 8 oz	Spoon Napkin, etc.	Orange-shaded schools fall into the 70-80% Free and Reduced eligibility.						
DENVER COUNTY 1	5578	MARRAMA ELEMENTARY SCHOOL	581	86.23%	78%	\$ 37,840.53	\$ 84,762.79	\$ 1,513.62	\$ 3,723.51	\$ 127,840.45	\$ 128,870.13	\$ 1,029.68	\$ 226.59		
DENVER COUNTY 1	2129	DENVER CENTER FOR INTERNATIONAL S	276	85.87%	78%	\$ 17,975.88	\$ 40,265.97	\$ 719.04	\$ 1,768.83	\$ 60,729.71	\$ 61,004.67	\$ 274.95	\$ 107.64		
DENVER COUNTY 1	2755	VENTURE PREP HIGH SCHOOL	249	85.54%	78%	\$ 16,217.37	\$ 36,326.91	\$ 648.69	\$ 1,595.79	\$ 54,788.76	\$ 54,825.13	\$ 36.37	\$ 97.11		
DENVER COUNTY 1	7188	P.U.S.H. ACADEMY	171	85.38%	78%	\$ 11,137.23	\$ 24,947.40	\$ 445.49	\$ 1,095.90	\$ 37,626.02	\$ 37,616.48	\$ (9.54)	\$ 66.69		
DENVER COUNTY 1	7992	SMILEY MIDDLE SCHOOL	135	85.19%	78%	\$ 8,792.55	\$ 19,695.31	\$ 351.70	\$ 865.19	\$ 29,704.75	\$ 29,640.66	\$ (64.09)	\$ 52.65		
DENVER COUNTY 1	0067	ACADEMY OF URBAN LEARNING	153	84.97%	78%	\$ 9,964.89	\$ 22,321.35	\$ 398.60	\$ 980.55	\$ 33,665.38	\$ 33,521.11	\$ (144.28)	\$ 59.67		
DENVER COUNTY 1	6314	NORTH HIGH SCHOOL	769	84.92%	78%	\$ 50,084.97	\$ 112,190.33	\$ 2,003.40	\$ 4,928.36	\$ 169,207.06	\$ 167,885.60	\$ (1,321.46)	\$ 299.91		
DENVER COUNTY 1	7246	RESPECT ACADEMY AT LINCOLN	111	84.68%	78%	\$ 7,229.43	\$ 16,193.92	\$ 289.18	\$ 711.38	\$ 24,423.91	\$ 24,105.92	\$ (317.99)	\$ 43.29		
DENVER COUNTY 1	3426	GILPIN MONTESSORI PUBLIC SCHOOL	215	84.65%	78%	\$ 14,002.95	\$ 31,366.61	\$ 560.12	\$ 1,377.89	\$ 47,307.57	\$ 46,958.73	\$ (348.84)	\$ 83.85		
DENVER COUNTY 1	8995	VISTA ACADEMY	229	84.28%	78%	\$ 14,914.77	\$ 33,409.08	\$ 596.59	\$ 1,467.61	\$ 50,388.06	\$ 49,833.57	\$ (554.49)	\$ 89.31		
DENVER COUNTY 1	1295	COLLEGIATE PREPARATORY ACADEMY	367	83.65%	78%	\$ 23,902.71	\$ 53,542.07	\$ 956.11	\$ 2,352.03	\$ 80,752.92	\$ 79,222.83	\$ (1,530.09)	\$ 143.13		
DENVER COUNTY 1	4494	JUSTICE HIGH SCHOOL DENVER	97	83.51%	78%	\$ 6,317.61	\$ 14,151.45	\$ 252.70	\$ 621.65	\$ 21,343.41	\$ 20,910.64	\$ (432.78)	\$ 37.83		
DENVER COUNTY 1	4795	KUNSMILLER CREATIVE ARTS ACADEMY	939	83.49%	78%	\$ 61,157.07	\$ 136,991.84	\$ 2,446.28	\$ 6,017.86	\$ 206,613.05	\$ 202,752.30	\$ (3,860.75)	\$ 366.21		
DENVER COUNTY 1	7241	ROCKY MOUNTAIN PREP	215	82.79%	78%	\$ 14,002.95	\$ 31,366.61	\$ 560.12	\$ 1,377.89	\$ 47,307.57	\$ 46,099.01	\$ (1,208.55)	\$ 83.85		
DENVER COUNTY 1	2641	EXCEL ACADEMY	121	82.64%	78%	\$ 7,880.73	\$ 17,652.84	\$ 315.23	\$ 775.46	\$ 26,624.26	\$ 25,504.91	\$ (1,119.35)	\$ 47.19		
DENVER COUNTY 1	2757	HIGH TECH EARLY COLLEGE	405	82.47%	78%	\$ 26,377.65	\$ 59,085.94	\$ 1,055.11	\$ 2,595.56	\$ 89,114.25	\$ 86,338.93	\$ (2,775.32)	\$ 157.95		
DENVER COUNTY 1	2188	DENVER CENTER FOR 21ST LEARNING A	244	82.38%	78%	\$ 15,891.72	\$ 35,597.45	\$ 635.67	\$ 1,563.75	\$ 53,688.59	\$ 51,844.78	\$ (1,843.80)	\$ 95.16		
DENVER COUNTY 1	3641	GREEN VALLEY ELEMENTARY SCHOOL	612	82.19%	78%	\$ 39,859.56	\$ 89,285.41	\$ 1,594.38	\$ 3,922.18	\$ 134,661.54	\$ 130,430.64	\$ (4,230.90)	\$ 238.68		
DENVER COUNTY 1	4498	KAISER ELEMENTARY SCHOOL	269	81.78%	78%	\$ 17,519.97	\$ 39,244.73	\$ 700.80	\$ 1,723.97	\$ 59,189.47	\$ 57,022.62	\$ (2,166.85)	\$ 104.91		
DENVER COUNTY 1	8945	UNIVERSITY PREP	243	81.48%	78%	\$ 15,826.59	\$ 35,451.56	\$ 633.06	\$ 1,557.34	\$ 53,468.55	\$ 51,382.36	\$ (2,086.19)	\$ 94.77		
DENVER COUNTY 1	5844	CONTEMPORARY LEARNING ACADEMY	225	81.33%	78%	\$ 14,654.25	\$ 32,825.52	\$ 586.17	\$ 1,441.98	\$ 49,507.92	\$ 47,100.71	\$ (2,407.20)	\$ 87.75		
DENVER COUNTY 1	1748	COLORADO HIGH SCHOOL	161	80.75%	78%	\$ 10,485.93	\$ 23,488.48	\$ 419.44	\$ 1,031.82	\$ 35,425.67	\$ 33,667.00	\$ (1,758.67)	\$ 62.79		
DENVER COUNTY 1	9730	STRIVE PREP - GVR	238	80.25%	78%	\$ 15,500.94	\$ 34,722.11	\$ 620.04	\$ 1,525.29	\$ 52,368.38	\$ 49,695.49	\$ (2,672.88)	\$ 92.82	\$ 668,643.29	
DENVER COUNTY 1	7163	P.R.E.P. (POSITIVE REFOCUS EDUCATION	154	79.87%	78%	\$ 10,030.02	\$ 22,467.24	\$ 401.20	\$ 986.95	\$ 33,885.42	\$ 31,797.77	\$ (2,087.65)	\$ 60.06		
DENVER COUNTY 1	5995	MONTBELLO HIGH SCHOOL	291	79.73%	78%	\$ 18,952.83	\$ 42,454.34	\$ 758.11	\$ 1,864.96	\$ 64,030.24	\$ 60,440.64	\$ (3,589.60)	\$ 113.49		
DENVER COUNTY 1	7578	SAMUELS ELEMENTARY SCHOOL	530	79.43%	78%	\$ 34,518.90	\$ 77,322.34	\$ 1,380.76	\$ 3,396.66	\$ 116,618.65	\$ 109,742.75	\$ (6,875.90)	\$ 206.70		
DENVER COUNTY 1	0099	ACADEMY 360	99	78.79%	78%	\$ 6,447.87	\$ 14,443.23	\$ 257.91	\$ 634.47	\$ 21,783.48	\$ 20,375.27	\$ (1,408.21)	\$ 38.61		
DENVER COUNTY 1	7554	SABIN WORLD SCHOOL	638	78.53%	78%	\$ 41,552.94	\$ 93,078.59	\$ 1,662.12	\$ 4,088.81	\$ 140,382.45	\$ 130,949.08	\$ (9,433.38)	\$ 248.82		
DENVER COUNTY 1	1400	CENTENNIAL ECE-8 SCHOOL	397	78.34%	78%	\$ 25,856.61	\$ 57,918.81	\$ 1,034.26	\$ 2,544.29	\$ 87,353.97	\$ 81,322.62	\$ (6,031.35)	\$ 154.83		
DENVER COUNTY 1	8145	SUMMIT ACADEMY	157	77.71%	78%	\$ 10,225.41	\$ 22,904.92	\$ 409.02	\$ 1,006.18	\$ 34,545.53	\$ 31,619.31	\$ (2,926.21)	\$ 61.23		
DENVER COUNTY 1	2181	DSST: GREEN VALLEY RANCH MIDDLE SC	450	76.89%	78%	\$ 29,308.50	\$ 65,651.04	\$ 1,172.34	\$ 2,883.96	\$ 99,015.84	\$ 90,778.19	\$ (8,237.64)	\$ 175.50		
DENVER COUNTY 1	7861	SIMS FAYOLA INTERNATIONAL ACADEM	198	76.77%	78%	\$ 12,895.74	\$ 28,886.46	\$ 515.83	\$ 1,268.94	\$ 43,566.97	\$ 39,817.88	\$ (3,749.09)	\$ 77.22		
DENVER COUNTY 1	6088	DORA MOORE ECE-8 SCHOOL	451	76.50%	78%	\$ 29,373.63	\$ 65,796.93	\$ 1,174.95	\$ 2,890.37	\$ 99,235.87	\$ 90,599.74	\$ (8,636.13)	\$ 175.89		
DENVER COUNTY 1	2223	DSST: COLE	415	76.39%	78%	\$ 27,028.95	\$ 60,544.85	\$ 1,081.16	\$ 2,659.65	\$ 91,314.60	\$ 83,268.71	\$ (8,045.90)	\$ 161.85		
DENVER COUNTY 1	8888	TRAYLOR ACADEMY	535	76.07%	78%	\$ 34,844.55	\$ 78,051.79	\$ 1,393.78	\$ 3,428.70	\$ 117,718.83	\$ 106,989.05	\$ (10,729.78)	\$ 208.65		
DENVER COUNTY 1	6970	FLORIDA PITT-WALLER ECE-8 SCHOOL	844	74.64%	78%	\$ 54,969.72	\$ 123,132.17	\$ 2,198.79	\$ 5,409.02	\$ 185,709.70	\$ 166,078.89	\$ (19,630.81)	\$ 329.16		
DENVER COUNTY 1	8132	SOUTHWEST EARLY COLLEGE	293	74.40%	78%	\$ 19,083.09	\$ 42,746.12	\$ 763.32	\$ 1,877.78	\$ 64,470.31	\$ 57,468.11	\$ (7,002.20)	\$ 114.27		
DENVER COUNTY 1	7942	SKINNER MIDDLE SCHOOL	463	73.87%	78%	\$ 30,155.19	\$ 67,547.63	\$ 1,206.21	\$ 2,967.27	\$ 101,876.29	\$ 90,283.21	\$ (11,593.09)	\$ 180.57		
DENVER COUNTY 1	5826	MERRILL MIDDLE SCHOOL	523	73.61%	78%	\$ 34,062.99	\$ 76,301.10	\$ 1,362.52	\$ 3,351.80	\$ 115,078.41	\$ 101,749.99	\$ (13,328.41)	\$ 203.97		
DENVER COUNTY 1	2145	DSST: GREEN VALLEY RANCH HIGH SCHO	443	73.36%	78%	\$ 28,852.59	\$ 64,629.80	\$ 1,154.10	\$ 2,839.09	\$ 97,475.59	\$ 85,972.90	\$ (11,502.69)	\$ 172.77		
DENVER COUNTY 1	4444	JOHN F KENNEDY HIGH SCHOOL	1,260	73.02%	78%	\$ 82,063.80	\$ 183,822.91	\$ 3,282.55	\$ 8,075.08	\$ 277,244.34	\$ 243,617.46	\$ (33,626.88)	\$ 491.40		
DENVER COUNTY 1	1489	COMPASSION ROAD ACADEMY	74	72.97%	78%	\$ 4,819.62	\$ 10,795.95	\$ 192.78	\$ 474.25	\$ 16,282.60	\$ 14,122.79	\$ (2,159.82)	\$ 28.86		
DENVER COUNTY 1	8053	SOAR AT GREEN VALLEY RANCH	472	72.67%	78%	\$ 30,741.36	\$ 68,860.65	\$ 1,229.65	\$ 3,024.95	\$ 103,856.61	\$ 90,935.81	\$ (12,920.80)	\$ 184.08		
DENVER COUNTY 1	5448	MANUAL HIGH SCHOOL	417	72.66%	78%	\$ 27,159.21	\$ 60,836.63	\$ 1,086.37	\$ 2,672.47	\$ 91,754.68	\$ 79,712.61	\$ (12,042.07)	\$ 162.63		
DENVER COUNTY 1	8086	SOUTH HIGH SCHOOL	1,370	72.41%	78%	\$ 89,228.10	\$ 199,870.94	\$ 3,569.12	\$ 8,780.05	\$ 301,448.21	\$ 262,812.58	\$ (38,635.64)	\$ 534.30		

Keep BAB@80%		COLORADO DEPARTMENT OF EDUCATION			Annual # Days	Percent of Students Served	Labor* Cost/MI	Food Cost/MI	Paper & Cleaning Cost/MI	Overhead (Indirect) Cost % of Expenses	Total Cost	Total Revenue	Net Income	Breakfast Labor Cost/Day	Annual Loss
BAB "Real" Cost of 20 Colorado Districts		FALL 2013 K-12 FREE AND REDUCED LUNCH ELIGIBILITY BY SCHOOL			167	78%	\$ 0.50	\$ 1.12	\$ 0.02	3%	Calculation	Calculation	Calculation	Calculation	Calculation
DISTRICT NAME	SCHOOL CODE	SCHOOL NAME	K-12 COUNT	% FREE AND REDUCED ELIGIBLE	Average Daily Meal Participatio n	* Labor Cost includes PERA, Medicare, and prorated cost of benefits.	Fruit 1/2 cup Brd/Mt 1-2 oz Milk 8 oz	Spoon Napkin, etc.	Orange-shaded schools fall into the 70-80% Free and Reduced eligibility.						
DENVER COUNTY 1	9348	WEST CAREER ACADEMY	75	70.67%	78%	\$ 4,884.75	\$ 10,941.84	\$ 195.39	\$ 480.66	\$ 16,502.64	\$ 13,907.86	\$ (2,594.78)	\$ 29.25	\$ (236,788.03)	
DENVER COUNTY 1 Total			11% 54,691											\$ 431,855.25	
DOUGLAS COUNTY RE 1	3847	HOPE ONLINE LEARNING ACADEMY MID	724	73.90%	78%	\$ 47,154.12	\$ 105,625.23	\$ 1,886.16	\$ 4,639.97	\$ 159,305.48	\$ 141,393.32	\$ (17,912.16)	\$ 282.36		
DOUGLAS COUNTY RE 1	3863	HOPE ONLINE LEARNING ACADEMY ELE	1,751	71.56%	78%	\$ 114,042.63	\$ 255,455.49	\$ 4,561.71	\$ 11,221.79	\$ 385,281.62	\$ 333,169.91	\$ (52,111.71)	\$ 682.89	\$ (70,023.87)	
DOUGLAS COUNTY RE 1 Total			28% 2,475											\$ (70,023.87)	
HARRISON 2	1383	CENTENNIAL ELEMENTARY SCHOOL	535	90.28%	78%	\$ 34,844.55	\$ 78,051.79	\$ 1,393.78	\$ 3,428.70	\$ 117,718.83	\$ 123,323.66	\$ 5,604.83	\$ 208.65		
HARRISON 2	0469	ATLAS PREPARATORY SCHOOL	677	88.48%	78%	\$ 44,093.01	\$ 98,768.34	\$ 1,763.72	\$ 4,338.75	\$ 148,963.82	\$ 153,434.56	\$ 4,470.73	\$ 264.03		
HARRISON 2	8350	STRATTON MEADOWS ELEMENTARY SC	360	87.50%	78%	\$ 23,446.80	\$ 52,520.83	\$ 937.87	\$ 2,307.17	\$ 79,212.67	\$ 80,832.84	\$ 1,620.17	\$ 140.40		
HARRISON 2	8337	STRATMOOR HILLS ELEMENTARY SCHO	271	85.98%	78%	\$ 17,650.23	\$ 39,536.52	\$ 706.01	\$ 1,736.78	\$ 59,629.54	\$ 59,926.11	\$ 296.58	\$ 105.69		
HARRISON 2	6936	PIKES PEAK ELEMENTARY SCHOOL	398	85.43%	78%	\$ 25,921.74	\$ 58,064.70	\$ 1,036.87	\$ 2,550.70	\$ 87,574.01	\$ 87,592.03	\$ 18.03	\$ 155.22		
HARRISON 2	1000	BRICKER ELEMENTARY SCHOOL	354	82.77%	78%	\$ 23,056.02	\$ 51,645.48	\$ 922.24	\$ 2,268.71	\$ 77,892.46	\$ 75,885.57	\$ (2,006.89)	\$ 138.06		
HARRISON 2	1305	CARMEL MIDDLE SCHOOL	415	82.65%	78%	\$ 27,028.95	\$ 60,544.85	\$ 1,081.16	\$ 2,659.65	\$ 91,314.60	\$ 88,856.86	\$ (2,457.75)	\$ 161.85		
HARRISON 2	6018	MONTEREY ELEMENTARY SCHOOL	396	82.07%	78%	\$ 25,791.48	\$ 57,772.92	\$ 1,031.66	\$ 2,537.88	\$ 87,133.94	\$ 84,295.15	\$ (2,838.78)	\$ 154.44	\$ 4,706.92	
HARRISON 2	8923	TURMAN ELEMENTARY SCHOOL	299	79.26%	78%	\$ 19,473.87	\$ 43,621.47	\$ 778.95	\$ 1,916.23	\$ 65,790.52	\$ 61,843.54	\$ (3,946.98)	\$ 116.61		
HARRISON 2	6686	PANORAMA MIDDLE SCHOOL	493	78.30%	78%	\$ 32,109.09	\$ 71,924.36	\$ 1,284.36	\$ 3,159.53	\$ 108,477.35	\$ 100,943.68	\$ (7,533.67)	\$ 192.27		
HARRISON 2	3392	GIBERSON ELEMENTARY SCHOOL	335	77.31%	78%	\$ 21,818.55	\$ 48,873.55	\$ 872.74	\$ 2,146.95	\$ 73,711.79	\$ 67,848.53	\$ (5,863.26)	\$ 130.65		
HARRISON 2	7611	SAND CREEK ELEMENTARY SCHOOL	479	76.20%	78%	\$ 31,197.27	\$ 69,881.88	\$ 1,247.89	\$ 3,069.81	\$ 105,396.86	\$ 95,919.56	\$ (9,477.30)	\$ 186.81		
HARRISON 2	3522	FOX MEADOW MIDDLE SCHOOL	532	72.74%	78%	\$ 34,649.16	\$ 77,614.12	\$ 1,385.97	\$ 3,409.48	\$ 117,058.72	\$ 102,508.11	\$ (14,550.62)	\$ 207.48		
HARRISON 2	6460	OAK CREEK ELEMENTARY SCHOOL	286	72.73%	78%	\$ 18,627.18	\$ 41,724.88	\$ 745.09	\$ 1,832.91	\$ 62,930.06	\$ 55,063.51	\$ (7,866.56)	\$ 111.54	\$ (49,238.38)	
HARRISON 2 Total **			18% 5,830											\$ (44,531.47)	
COLORADO SPRINGS 11	7228	QUEEN PALMER ELEMENTARY SCHOOL	238	91.60%	80%	\$ 15,928.17	\$ 35,679.11	\$ 637.13	\$ 1,567.33	\$ 53,811.74	\$ 57,065.69	\$ 3,253.95	\$ 95.38		
COLORADO SPRINGS 11	3890	HUNT ELEMENTARY SCHOOL	325	90.77%	66%	\$ 17,867.76	\$ 40,023.78	\$ 714.71	\$ 1,758.19	\$ 60,364.44	\$ 63,280.46	\$ 2,916.02	\$ 106.99		
COLORADO SPRINGS 11	9660	WILSON ELEMENTARY SCHOOL	406	89.66%	71%	\$ 24,152.27	\$ 54,101.08	\$ 966.09	\$ 2,376.58	\$ 81,596.02	\$ 84,949.35	\$ 3,353.33	\$ 144.62		
COLORADO SPRINGS 11	7482	ROOSEVELT EDISON CHARTER SCHOOL	693	89.47%	72%	\$ 41,470.28	\$ 92,893.42	\$ 1,658.81	\$ 4,080.68	\$ 140,103.18	\$ 145,659.40	\$ 5,556.23	\$ 248.33		
COLORADO SPRINGS 11	5988	MONROE ELEMENTARY SCHOOL	452	88.27%	78%	\$ 29,507.38	\$ 66,096.54	\$ 1,180.30	\$ 2,903.53	\$ 99,687.74	\$ 102,334.47	\$ 2,646.73	\$ 176.69		
COLORADO SPRINGS 11	8457	BRISTOL SWIGERT AEROSPACE ACADEMY	512	87.30%	68%	\$ 29,223.98	\$ 65,461.72	\$ 1,168.96	\$ 2,875.64	\$ 98,730.31	\$ 100,305.62	\$ 1,575.31	\$ 174.99		
COLORADO SPRINGS 11	9445	WEST ELEMENTARY SCHOOL	347	84.15%	79%	\$ 23,022.98	\$ 51,571.48	\$ 920.92	\$ 2,265.46	\$ 77,780.84	\$ 76,826.43	\$ (954.41)	\$ 137.86		
COLORADO SPRINGS 11	9618	ROGERS ELEMENTARY SCHOOL	338	83.73%	79%	\$ 22,175.21	\$ 49,672.48	\$ 887.01	\$ 2,182.04	\$ 74,916.74	\$ 73,651.89	\$ (1,264.85)	\$ 132.79		
COLORADO SPRINGS 11	5576	TWAIN ELEMENTARY SCHOOL	470	82.98%	76%	\$ 29,819.70	\$ 66,796.13	\$ 1,192.79	\$ 2,934.26	\$ 100,742.87	\$ 98,283.19	\$ (2,459.68)	\$ 178.56		
COLORADO SPRINGS 11	3360	GALILEO SCHOOL OF MATH AND SCIENC	503	82.90%	62%	\$ 26,133.64	\$ 58,539.36	\$ 1,045.35	\$ 2,571.55	\$ 88,289.90	\$ 86,101.79	\$ (2,188.12)	\$ 156.49		
COLORADO SPRINGS 11	5878	MIDLAND ELEMENTARY SCHOOL	152	82.24%	69%	\$ 8,780.63	\$ 19,668.61	\$ 351.23	\$ 864.01	\$ 29,664.48	\$ 28,746.16	\$ (918.32)	\$ 52.58		
COLORADO SPRINGS 11	4358	JACKSON ELEMENTARY SCHOOL	404	82.18%	69%	\$ 23,318.43	\$ 52,233.29	\$ 932.74	\$ 2,294.53	\$ 78,778.99	\$ 76,295.14	\$ (2,483.85)	\$ 139.63		
COLORADO SPRINGS 11	1032	BRISTOL ELEMENTARY SCHOOL	211	81.52%	73%	\$ 12,861.51	\$ 28,809.77	\$ 514.46	\$ 1,265.57	\$ 43,451.31	\$ 41,800.50	\$ (1,650.81)	\$ 77.02		
COLORADO SPRINGS 11	1340	CARVER ELEMENTARY SCHOOL	349	80.80%	83%	\$ 24,187.45	\$ 54,179.88	\$ 967.50	\$ 2,380.04	\$ 81,714.86	\$ 78,040.20	\$ (3,674.66)	\$ 144.84		
COLORADO SPRINGS 11	2510	EDISON ELEMENTARY SCHOOL	276	80.80%	67%	\$ 15,440.82	\$ 34,587.44	\$ 617.63	\$ 1,519.38	\$ 52,165.27	\$ 49,816.78	\$ (2,348.48)	\$ 92.46	\$ 1,358.39	
COLORADO SPRINGS 11	8359	SPACE TECHNOLOGY AND ARTS ACADEM	394	78.43%	78%	\$ 25,661.22	\$ 57,481.13	\$ 1,026.45	\$ 2,525.06	\$ 86,693.87	\$ 80,710.40	\$ (5,983.47)	\$ 153.66		
COLORADO SPRINGS 11	2528	NIKOLA TESLA EDUCATION OPPORTUNIT	198	76.26%	78%	\$ 12,895.74	\$ 28,886.46	\$ 515.83	\$ 1,268.94	\$ 43,566.97	\$ 39,493.53	\$ (4,073.44)	\$ 77.22		
COLORADO SPRINGS 11	9404	WEST MIDDLE SCHOOL	272	76.10%	78%	\$ 17,715.36	\$ 39,682.41	\$ 708.61	\$ 1,743.19	\$ 59,849.57	\$ 54,301.49	\$ (5,548.09)	\$ 106.08		
COLORADO SPRINGS 11	1798	COLUMBIA ELEMENTARY SCHOOL	242	74.38%	78%	\$ 15,761.46	\$ 35,305.67	\$ 630.46	\$ 1,550.93	\$ 53,248.52	\$ 47,513.64	\$ (5,734.88)	\$ 94.38		
COLORADO SPRINGS 11	3592	GRANT ELEMENTARY SCHOOL	497	73.64%	78%	\$ 32,369.61	\$ 72,507.93	\$ 1,294.78	\$ 3,185.17	\$ 109,357.49	\$ 96,791.00	\$ (12,566.49)	\$ 193.83		
COLORADO SPRINGS 11	4090	MANN MIDDLE SCHOOL	464	73.28%	78%	\$ 30,220.32	\$ 67,693.52	\$ 1,208.81	\$ 2,973.68	\$ 102,096.33	\$ 89,926.29	\$ (12,170.04)	\$ 180.96		
COLORADO SPRINGS 11	3920	HENRY ELEMENTARY SCHOOL	307	71.01%	78%	\$ 19,994.91	\$ 44,788.60	\$ 799.80	\$ 1,967.50	\$ 67,550.80	\$ 58,051.67	\$ (9,499.13)	\$ 119.73	\$ (55,575.53)	
COLORADO SPRINGS 11 Total			17% 8,050											\$ (54,217.14)	

Keep BAB@80%		COLORADO DEPARTMENT OF EDUCATION			Annual # Days	Percent of Students Served	Labor* Cost/MI	Food Cost/MI	Paper & Cleaning Cost/MI	Overhead (Indirect) Cost % of Expenses	Total Cost	Total Revenue	Net Income	Breakfast Labor Cost/Day	Annual Loss
BAB "Real" Cost of 20 Colorado Districts		FALL 2013 K-12 FREE AND REDUCED LUNCH ELIGIBILITY BY SCHOOL			167	78%	\$ 0.50	\$ 1.12	\$ 0.02	3%	Calculation	Calculation	Calculation	Calculation	Calculation
DISTRICT NAME	SCHOOL CODE	SCHOOL NAME	K-12 COUNT	% FREE AND REDUCED ELIGIBLE	Average Daily Meal Participation	* Labor Cost includes PERA, Medicare, and prorated cost of benefits.	Fruit 1/2 cup Brd/Mt 1-2 oz Milk 8 oz	Spoon Napkin, etc.	Orange-shaded schools fall into the 70-80% Free and Reduced eligibility.						
JEFFERSON COUNTY R-1	5972	MOLHOLM ELEMENTARY SCHOOL	468	94.44%	78%	\$ 30,480.84	\$ 68,277.08	\$ 1,219.23	\$ 2,999.31	\$ 102,976.47	\$ 112,067.89	\$ 9,091.42	\$ 182.52		
JEFFERSON COUNTY R-1	2550	EIBER ELEMENTARY SCHOOL	440	93.41%	78%	\$ 28,657.20	\$ 64,192.13	\$ 1,146.29	\$ 2,819.87	\$ 96,815.48	\$ 104,383.85	\$ 7,568.37	\$ 171.60		
JEFFERSON COUNTY R-1	2496	EDGEWATER ELEMENTARY SCHOOL	445	91.91%	78%	\$ 28,982.85	\$ 64,921.58	\$ 1,159.31	\$ 2,851.91	\$ 97,915.66	\$ 104,136.36	\$ 6,220.70	\$ 173.55		
JEFFERSON COUNTY R-1	5354	LUMBERG ELEMENTARY SCHOOL	506	90.71%	78%	\$ 32,955.78	\$ 73,820.95	\$ 1,318.23	\$ 3,242.85	\$ 111,337.81	\$ 117,107.65	\$ 5,769.84	\$ 197.34		
JEFFERSON COUNTY R-1	8248	STEIN ELEMENTARY SCHOOL	771	90.66%	78%	\$ 50,215.23	\$ 112,482.12	\$ 2,008.61	\$ 4,941.18	\$ 169,647.13	\$ 178,173.54	\$ 8,526.40	\$ 300.69		
JEFFERSON COUNTY R-1	4422	JEFFERSON HIGH SCHOOL	567	87.65%	78%	\$ 36,928.71	\$ 82,720.31	\$ 1,477.15	\$ 3,633.79	\$ 124,759.95	\$ 127,062.12	\$ 2,302.16	\$ 221.13		
JEFFERSON COUNTY R-1	9515	WHEAT RIDGE 5-8	513	86.35%	78%	\$ 33,411.69	\$ 74,842.19	\$ 1,336.47	\$ 3,287.71	\$ 112,878.05	\$ 113,851.15	\$ 973.09	\$ 200.07		
JEFFERSON COUNTY R-1	6848	PENNINGTON ELEMENTARY SCHOOL	247	86.23%	78%	\$ 16,087.11	\$ 36,035.13	\$ 643.48	\$ 1,582.97	\$ 54,348.69	\$ 54,788.66	\$ 439.97	\$ 96.33		
JEFFERSON COUNTY R-1	6474	O'CONNELL MIDDLE SCHOOL	498	85.54%	78%	\$ 32,434.74	\$ 72,653.82	\$ 1,297.39	\$ 3,191.58	\$ 109,577.53	\$ 109,723.21	\$ 145.68	\$ 194.22		
JEFFERSON COUNTY R-1	8223	STEVENS ELEMENTARY SCHOOL	297	84.18%	78%	\$ 19,343.61	\$ 43,329.69	\$ 773.74	\$ 1,903.41	\$ 65,350.55	\$ 64,528.20	\$ (822.25)	\$ 115.83		
JEFFERSON COUNTY R-1	6237	NEW AMERICA SCHOOL	253	83.40%	78%	\$ 16,477.89	\$ 36,910.47	\$ 659.12	\$ 1,621.42	\$ 55,668.90	\$ 54,212.91	\$ (1,455.99)	\$ 98.67		
JEFFERSON COUNTY R-1	8090	DEANE ELEMENTARY SCHOOL	487	83.16%	78%	\$ 31,718.31	\$ 71,049.01	\$ 1,268.73	\$ 3,121.08	\$ 107,157.14	\$ 104,735.55	\$ (2,421.59)	\$ 189.93		
JEFFERSON COUNTY R-1	0109	ARVADA K-8	602	82.72%	78%	\$ 39,208.26	\$ 87,826.50	\$ 1,568.33	\$ 3,858.09	\$ 132,461.19	\$ 128,954.79	\$ (3,506.39)	\$ 234.78		
JEFFERSON COUNTY R-1	7078	PLEASANT VIEW ELEMENTARY SCHOOL	232	82.33%	78%	\$ 15,110.16	\$ 33,846.76	\$ 604.41	\$ 1,486.84	\$ 51,048.16	\$ 49,476.66	\$ (1,571.51)	\$ 90.48		
JEFFERSON COUNTY R-1	4802	KULLERSTRAND ELEMENTARY SCHOOL	198	82.32%	78%	\$ 12,895.74	\$ 28,886.46	\$ 515.83	\$ 1,268.94	\$ 43,566.97	\$ 42,255.04	\$ (1,311.93)	\$ 77.22		
JEFFERSON COUNTY R-1	5004	LASLEY ELEMENTARY SCHOOL	553	81.37%	78%	\$ 36,016.89	\$ 80,677.83	\$ 1,440.68	\$ 3,544.06	\$ 121,679.46	\$ 116,887.51	\$ (4,791.95)	\$ 215.67		
JEFFERSON COUNTY R-1	0108	ALAMEDA INTERNATIONAL HIGH SCHOOL	883	81.31%	78%	\$ 57,509.79	\$ 128,821.93	\$ 2,300.39	\$ 5,658.96	\$ 194,291.07	\$ 186,342.14	\$ (7,948.93)	\$ 344.37	\$ 17,207.09	
JEFFERSON COUNTY R-1	7962	SLATER ELEMENTARY SCHOOL	292	78.77%	78%	\$ 19,017.96	\$ 42,600.23	\$ 760.72	\$ 1,871.37	\$ 64,250.28	\$ 60,083.73	\$ (4,166.55)	\$ 113.88		
JEFFERSON COUNTY R-1	0148	ALLEDALE ELEMENTARY SCHOOL	218	75.23%	78%	\$ 14,198.34	\$ 31,804.28	\$ 567.93	\$ 1,397.12	\$ 47,967.67	\$ 43,199.43	\$ (4,768.25)	\$ 85.02		
JEFFERSON COUNTY R-1	5024	LAWRENCE ELEMENTARY SCHOOL	352	74.72%	78%	\$ 22,925.76	\$ 51,353.70	\$ 917.03	\$ 2,255.89	\$ 77,452.39	\$ 69,328.28	\$ (8,124.11)	\$ 137.28		
JEFFERSON COUNTY R-1	8432	SWANSON ELEMENTARY SCHOOL	412	74.03%	78%	\$ 26,833.56	\$ 60,107.17	\$ 1,073.34	\$ 2,640.42	\$ 90,654.50	\$ 80,580.14	\$ (10,074.36)	\$ 160.68		
JEFFERSON COUNTY R-1	2946	FITZMORRIS ELEMENTARY SCHOOL	251	72.91%	78%	\$ 16,347.63	\$ 36,618.69	\$ 653.91	\$ 1,608.61	\$ 55,228.83	\$ 48,450.21	\$ (6,778.63)	\$ 97.89		
JEFFERSON COUNTY R-1	3088	FOSTER ELEMENTARY SCHOOL	443	71.78%	78%	\$ 28,852.59	\$ 64,629.80	\$ 1,154.10	\$ 2,839.09	\$ 97,475.59	\$ 84,504.87	\$ (12,970.72)	\$ 172.77		
JEFFERSON COUNTY R-1	9154	VIVIAN ELEMENTARY SCHOOL	178	70.79%	78%	\$ 11,593.14	\$ 25,968.63	\$ 463.73	\$ 1,140.76	\$ 39,166.26	\$ 33,536.74	\$ (5,629.52)	\$ 69.42	\$ (52,512.13)	
JEFFERSON COUNTY R-1 Total			16%	10,106										\$ (35,305.05)	
POUDRE R-1	4282	IRISH ELEMENTARY SCHOOL	306	86.60%	78%	\$ 19,929.78	\$ 44,642.71	\$ 797.19	\$ 1,961.09	\$ 67,330.77	\$ 68,080.39	\$ 749.62	\$ 119.34		
POUDRE R-1	7218	PUTNAM ELEMENTARY SCHOOL	318	84.28%	78%	\$ 20,711.34	\$ 46,393.40	\$ 828.45	\$ 2,038.00	\$ 69,971.19	\$ 69,199.32	\$ (771.87)	\$ 124.02	\$ (22.25)	
POUDRE R-1 Total			14%	624										\$ (22.25)	
THOMPSON R2-J	8918	TRUSCOTT ELEMENTARY SCHOOL	265	78.49%	78%	\$ 17,259.45	\$ 38,661.17	\$ 690.38	\$ 1,698.33	\$ 58,309.33	\$ 54,370.52	\$ (3,938.80)	\$ 103.35		
THOMPSON R2-J	9260	HAROLD FERGUSON HIGH SCHOOL	120	75.83%	78%	\$ 7,815.60	\$ 17,506.94	\$ 312.62	\$ 769.06	\$ 26,404.22	\$ 23,497.60	\$ (2,906.62)	\$ 46.80	\$ (6,845.42)	
THOMPSON R2-J Total			20%	385										\$ (6,845.42)	
MESA COUNTY VALLEY 51	7467	ROCKY MOUNTAIN ELEMENTARY SCHOOL	523	83.94%	78%	\$ 34,062.99	\$ 76,301.10	\$ 1,362.52	\$ 3,351.80	\$ 115,078.41	\$ 113,429.11	\$ (1,649.30)	\$ 203.97		
MESA COUNTY VALLEY 51	1686	CLIFTON ELEMENTARY SCHOOL	415	82.65%	78%	\$ 27,028.95	\$ 60,544.85	\$ 1,081.16	\$ 2,659.65	\$ 91,314.60	\$ 88,856.86	\$ (2,457.75)	\$ 161.85		
MESA COUNTY VALLEY 51	6264	NISLEY ELEMENTARY SCHOOL	467	81.16%	78%	\$ 30,415.71	\$ 68,131.19	\$ 1,216.63	\$ 2,992.91	\$ 102,756.43	\$ 98,490.89	\$ (4,265.55)	\$ 182.13		
MESA COUNTY VALLEY 51	2224	DOS RIOS ELEMENTARY SCHOOL	357	80.39%	78%	\$ 23,251.41	\$ 52,083.16	\$ 930.06	\$ 2,287.94	\$ 78,552.56	\$ 74,705.41	\$ (3,847.15)	\$ 139.23	\$ (12,219.74)	
MESA COUNTY VALLEY 51	1619	CHIPETA ELEMENTARY SCHOOL	428	76.87%	78%	\$ 27,875.64	\$ 62,441.43	\$ 1,115.03	\$ 2,742.96	\$ 94,175.06	\$ 86,322.00	\$ (7,853.06)	\$ 166.92	\$ (7,853.06)	
MESA COUNTY VALLEY 51 Total			19%	2,190										\$ (20,072.81)	
CHARTER SCHOOL INSTITUTE	7278	RICARDO FLORES MAGON ACADEMY	354	90.68%	78%	\$ 23,056.02	\$ 51,645.48	\$ 922.24	\$ 2,268.71	\$ 77,892.46	\$ 81,903.58	\$ 4,011.12	\$ 138.06		
CHARTER SCHOOL INSTITUTE	9040	VICTORY PREPARATORY ACADEMY MIDDLE	196	87.76%	78%	\$ 12,765.48	\$ 28,594.68	\$ 510.62	\$ 1,256.12	\$ 43,126.90	\$ 44,116.46	\$ 989.56	\$ 76.44		
CHARTER SCHOOL INSTITUTE	1376	SCHOLARS TO LEADERS ACADEMY	244	87.70%	78%	\$ 15,891.72	\$ 35,597.45	\$ 635.67	\$ 1,563.75	\$ 53,688.59	\$ 54,821.22	\$ 1,132.64	\$ 95.16		
CHARTER SCHOOL INSTITUTE	1882	COMMUNITY LEADERSHIP ACADEMY	493	83.77%	78%	\$ 32,109.09	\$ 71,924.36	\$ 1,284.36	\$ 3,159.53	\$ 108,477.35	\$ 106,746.77	\$ (1,730.58)	\$ 192.27		
CHARTER SCHOOL INSTITUTE	4699	THE NEW AMERICA SCHOOL	306	81.05%	78%	\$ 19,929.78	\$ 44,642.71	\$ 797.19	\$ 1,961.09	\$ 67,330.77	\$ 64,426.60	\$ (2,904.17)	\$ 119.34	\$ 1,498.56	
CHARTER SCHOOL INSTITUTE	9037	VICTORY PREPARATORY ACADEMY HIGH	48	79.17%	78%	\$ 3,126.24	\$ 7,002.78	\$ 125.05	\$ 307.62	\$ 10,561.69	\$ 9,918.00	\$ (643.69)	\$ 18.72		
CHARTER SCHOOL INSTITUTE	9785	YOUTH & FAMILY ACADEMY CHARTER	158	77.85%	78%	\$ 10,290.54	\$ 23,050.81	\$ 411.62	\$ 1,012.59	\$ 34,765.56	\$ 32,198.97	\$ (2,566.59)	\$ 61.62		

Keep BAB@80%		COLORADO DEPARTMENT OF EDUCATION			Annual # Days	Percent of Students Served	Labor* Cost/MI	Food Cost/MI	Paper & Cleaning Cost/MI	Overhead (Indirect) Cost % of Expenses	Total Cost	Total Revenue	Net Income	Breakfast Labor Cost/Day	Annual Loss
BAB "Real" Cost of 20 Colorado Districts		FALL 2013 K-12 FREE AND REDUCED LUNCH ELIGIBILITY BY SCHOOL			167	78%	\$ 0.50	\$ 1.12	\$ 0.02	3%	Calculation	Calculation	Calculation	Calculation	Calculation
DISTRICT NAME	SCHOOL CODE	SCHOOL NAME	K-12 COUNT	% FREE AND REDUCED ELIGIBLE	Average Daily Meal Participation	* Labor Cost Includes PERA, Medicare, and prorated cost of benefits.	Fruit 1/2 cup Brd/Mt 1-2 oz Milk 8 oz	Spoon Napkin, etc.	Orange-shaded schools fall into the 70-80% Free and Reduced eligibility.						
CHARTER SCHOOL INSTITUTE	0035	FRONTIER CHARTER ACADEMY	58	74.14%	78%	\$ 3,777.54	\$ 8,461.69	\$ 151.10	\$ 371.71	\$ 12,762.04	\$ 11,357.37	\$ (1,404.67)	\$ 22.62	\$ (4,614.96)	
CHARTER SCHOOL INSTITUTE Total			1,857	15%										\$ (3,116.39)	
PUEBLO CITY 60	4376	RISLEY INTERNATIONAL ACADEMY OF IN	369	97.29%	78%	\$ 24,032.97	\$ 53,833.85	\$ 961.32	\$ 2,364.84	\$ 81,192.99	\$ 90,617.97	\$ 9,424.99	\$ 143.91		
PUEBLO CITY 60	1828	COLUMBIAN ELEMENTARY SCHOOL	383	96.08%	78%	\$ 24,944.79	\$ 55,876.33	\$ 997.79	\$ 2,454.57	\$ 84,273.48	\$ 93,062.95	\$ 8,789.48	\$ 149.37		
PUEBLO CITY 60	0822	BESSEMER ELEMENTARY SCHOOL	424	92.45%	78%	\$ 27,615.12	\$ 61,857.87	\$ 1,104.60	\$ 2,717.33	\$ 93,294.92	\$ 99,716.64	\$ 6,421.71	\$ 165.36		
PUEBLO CITY 60	5916	MINNEQUA ELEMENTARY SCHOOL	357	90.76%	78%	\$ 23,251.41	\$ 52,083.16	\$ 930.06	\$ 2,287.94	\$ 78,552.56	\$ 82,657.79	\$ 4,105.22	\$ 139.23		
PUEBLO CITY 60	2438	EVA R BACA ELEMENTARY SCHOOL	290	90.00%	78%	\$ 18,887.70	\$ 42,308.45	\$ 755.51	\$ 1,858.55	\$ 63,810.21	\$ 66,564.16	\$ 2,753.96	\$ 113.10		
PUEBLO CITY 60	6770	PARK VIEW ELEMENTARY SCHOOL	479	89.77%	78%	\$ 31,197.27	\$ 69,881.88	\$ 1,247.89	\$ 3,069.81	\$ 105,396.86	\$ 109,889.94	\$ 4,493.08	\$ 186.81		
PUEBLO CITY 60	4302	IRVING ELEMENTARY SCHOOL	295	88.81%	78%	\$ 19,213.35	\$ 43,037.90	\$ 768.53	\$ 1,890.59	\$ 64,910.38	\$ 67,070.87	\$ 2,160.49	\$ 115.05		
PUEBLO CITY 60	0954	BRADFORD ELEMENTARY SCHOOL	345	88.12%	78%	\$ 22,469.85	\$ 50,332.46	\$ 898.79	\$ 2,211.03	\$ 75,912.14	\$ 77,885.06	\$ 1,972.92	\$ 134.55		
PUEBLO CITY 60	0860	BEULAH HEIGHTS ELEMENTARY SCHOOL	335	84.18%	78%	\$ 21,818.55	\$ 48,873.55	\$ 872.74	\$ 2,146.95	\$ 73,711.79	\$ 72,828.37	\$ (883.42)	\$ 130.65		
PUEBLO CITY 60	5048	PUEBLO ACADEMY OF ARTS	352	82.39%	78%	\$ 22,925.76	\$ 51,353.70	\$ 917.03	\$ 2,255.89	\$ 77,452.39	\$ 75,167.84	\$ (2,284.55)	\$ 137.28		
PUEBLO CITY 60	0756	BENJAMIN FRANKLIN ELEMENTARY SCH	429	81.59%	78%	\$ 27,940.77	\$ 62,587.32	\$ 1,117.63	\$ 2,749.37	\$ 94,395.10	\$ 90,799.04	\$ (3,596.06)	\$ 167.31		
PUEBLO CITY 60	8030	HEROES ACADEMY PREK-5	311	81.03%	78%	\$ 20,255.43	\$ 45,372.16	\$ 810.22	\$ 1,993.13	\$ 68,430.94	\$ 65,505.15	\$ (2,925.80)	\$ 121.29		
PUEBLO CITY 60	7481	RONCALLI STEM ACADEMY	539	80.52%	78%	\$ 35,105.07	\$ 78,635.36	\$ 1,404.20	\$ 3,454.34	\$ 118,598.97	\$ 112,901.55	\$ (5,697.42)	\$ 210.21	\$ 24,734.60	
PUEBLO CITY 60	3924	HERITAGE ELEMENTARY SCHOOL	383	77.81%	78%	\$ 24,944.79	\$ 55,876.33	\$ 997.79	\$ 2,454.57	\$ 84,273.48	\$ 78,017.92	\$ (6,255.55)	\$ 149.37		
PUEBLO CITY 60	3206	HEROES MIDDLE SCHOOL	310	77.42%	78%	\$ 20,190.30	\$ 45,226.27	\$ 807.61	\$ 1,986.73	\$ 68,210.91	\$ 62,889.53	\$ (5,321.38)	\$ 120.90		
PUEBLO CITY 60	1304	CARLILE ELEMENTARY SCHOOL	291	76.29%	78%	\$ 18,952.83	\$ 42,454.34	\$ 758.11	\$ 1,864.96	\$ 64,030.24	\$ 58,291.35	\$ (5,738.89)	\$ 113.49		
PUEBLO CITY 60	1488	CHAVEZ/HUERTA K-12 PREPARATORY A	1,115	74.44%	78%	\$ 72,619.95	\$ 162,668.69	\$ 2,904.80	\$ 7,145.80	\$ 245,339.24	\$ 218,985.30	\$ (26,353.94)	\$ 434.85		
PUEBLO CITY 60	1454	CENTRAL HIGH SCHOOL	826	71.67%	78%	\$ 53,797.38	\$ 120,506.13	\$ 2,151.90	\$ 5,293.66	\$ 181,749.07	\$ 157,218.61	\$ (24,530.46)	\$ 322.14		
PUEBLO CITY 60	9188	W H HEATON MIDDLE SCHOOL	735	70.75%	78%	\$ 47,870.55	\$ 107,230.03	\$ 1,914.82	\$ 4,710.46	\$ 161,725.87	\$ 138,534.12	\$ (23,191.75)	\$ 286.65		
PUEBLO CITY 60	6132	MORTON ELEMENTARY SCHOOL	509	70.73%	78%	\$ 33,151.17	\$ 74,258.62	\$ 1,326.05	\$ 3,262.08	\$ 111,997.91	\$ 95,939.10	\$ (16,058.82)	\$ 198.51		
PUEBLO CITY 60	8116	SOUTH PARK ELEMENTARY SCHOOL	300	70.00%	78%	\$ 19,539.00	\$ 43,767.36	\$ 781.56	\$ 1,922.64	\$ 66,010.56	\$ 56,076.93	\$ (9,933.63)	\$ 117.00	\$ (117,384.42)	
PUEBLO CITY 60 Total			19%	9,377										\$ (92,649.82)	
PUEBLO COUNTY 70	0472	AVONDALE ELEMENTARY SCHOOL	203	80.79%	78%	\$ 13,221.39	\$ 29,615.91	\$ 528.86	\$ 1,300.98	\$ 44,667.14	\$ 42,652.33	\$ (2,014.81)	\$ 79.17	\$ (2,014.81)	
PUEBLO COUNTY 70	9134	VINELAND MIDDLE SCHOOL	280	72.50%	78%	\$ 18,236.40	\$ 40,849.54	\$ 729.46	\$ 1,794.46	\$ 61,609.85	\$ 53,842.97	\$ (7,766.88)	\$ 109.20	\$ (7,766.88)	
PUEBLO COUNTY 70 Total			24%	483										\$ (9,781.69)	
GREELEY 6	1384	CENTENNIAL ELEMENTARY SCHOOL	623	97.91%	78%	\$ 40,575.99	\$ 90,890.22	\$ 1,623.04	\$ 3,992.68	\$ 137,081.92	\$ 153,829.24	\$ 16,747.32	\$ 242.97		
GREELEY 6	5620	MAPLEWOOD ELEMENTARY SCHOOL	650	96.62%	78%	\$ 42,334.50	\$ 94,829.28	\$ 1,693.38	\$ 4,165.71	\$ 143,022.87	\$ 158,682.73	\$ 15,659.86	\$ 253.50		
GREELEY 6	2414	EAST MEMORIAL ELEMENTARY SCHOOL	500	96.00%	78%	\$ 32,565.00	\$ 72,945.60	\$ 1,302.60	\$ 3,204.40	\$ 110,017.60	\$ 121,329.37	\$ 11,311.78	\$ 195.00		
GREELEY 6	2222	DOS RIOS ELEMENTARY SCHOOL	440	95.00%	78%	\$ 28,657.20	\$ 64,192.13	\$ 1,146.29	\$ 2,819.87	\$ 96,815.48	\$ 105,888.35	\$ 9,072.87	\$ 171.60		
GREELEY 6	0054	ROMERO ELEMENTARY SCHOOL	722	92.11%	78%	\$ 47,023.86	\$ 105,333.45	\$ 1,880.95	\$ 4,627.15	\$ 158,865.41	\$ 169,261.15	\$ 10,395.74	\$ 281.58		
GREELEY 6	5412	MADISON ELEMENTARY SCHOOL	505	91.88%	78%	\$ 32,890.65	\$ 73,675.06	\$ 1,315.63	\$ 3,236.44	\$ 111,117.77	\$ 118,145.82	\$ 7,028.05	\$ 196.95		
GREELEY 6	6774	MARTINEZ ELEMENTARY SCHOOL	613	91.52%	78%	\$ 39,924.69	\$ 89,431.31	\$ 1,596.99	\$ 3,928.59	\$ 134,881.57	\$ 142,933.00	\$ 8,051.42	\$ 239.07		
GREELEY 6	4438	JOHN EVANS MIDDLE SCHOOL	625	90.08%	78%	\$ 40,706.25	\$ 91,182.00	\$ 1,628.25	\$ 4,005.50	\$ 137,522.00	\$ 143,764.05	\$ 6,242.06	\$ 243.75		
GREELEY 6	3162	FRANKLIN MIDDLE SCHOOL	784	84.31%	78%	\$ 51,061.92	\$ 114,378.70	\$ 2,042.48	\$ 5,024.49	\$ 172,507.59	\$ 170,516.85	\$ (1,990.74)	\$ 305.76		
GREELEY 6	4356	JACKSON ELEMENTARY SCHOOL	462	82.68%	78%	\$ 30,090.06	\$ 67,401.73	\$ 1,203.60	\$ 2,960.86	\$ 101,656.26	\$ 98,916.84	\$ (2,739.42)	\$ 180.18		
GREELEY 6	0988	BRENTWOOD MIDDLE SCHOOL	573	80.10%	78%	\$ 37,319.49	\$ 83,595.66	\$ 1,492.78	\$ 3,672.24	\$ 126,080.17	\$ 119,514.85	\$ (6,565.31)	\$ 223.47	\$ 73,213.62	
GREELEY 6	3880	HEATH MIDDLE SCHOOL	654	79.97%	78%	\$ 42,595.02	\$ 95,412.84	\$ 1,703.80	\$ 4,191.35	\$ 143,903.02	\$ 136,261.08	\$ (7,641.94)	\$ 255.06		
GREELEY 6	7700	SCOTT ELEMENTARY SCHOOL	440	76.59%	78%	\$ 28,657.20	\$ 64,192.13	\$ 1,146.29	\$ 2,819.87	\$ 96,815.48	\$ 88,479.11	\$ (8,336.38)	\$ 171.60		
GREELEY 6	7814	SHAWSHEEN ELEMENTARY SCHOOL	446	75.78%	78%	\$ 29,047.98	\$ 65,067.48	\$ 1,161.92	\$ 2,858.32	\$ 98,135.70	\$ 88,912.87	\$ (9,222.82)	\$ 173.94		
GREELEY 6	5752	MEEKER ELEMENTARY SCHOOL	415	71.57%	78%	\$ 27,028.95	\$ 60,544.85	\$ 1,081.16	\$ 2,659.65	\$ 91,314.60	\$ 78,933.65	\$ (12,380.95)	\$ 161.85		
GREELEY 6	4425	JEFFERSON HIGH SCHOOL	407	70.76%	78%	\$ 26,507.91	\$ 59,377.72	\$ 1,060.32	\$ 2,608.38	\$ 89,554.32	\$ 75,649.80	\$ (13,904.53)	\$ 158.73	\$ (51,486.62)	
GREELEY 6 Total			13%	8,859										\$ 21,727.00	

Keep BAB@80%		COLORADO DEPARTMENT OF EDUCATION			Annual # Days	Percent of Students Served	Labor* Cost/Mi	Food Cost/Mi	Paper & Cleaning Cost/Mi	Overhead (Indirect) Cost % of Expenses	Total Cost	Total Revenue	Net Income	Breakfast Labor Cost/Day	Annual Loss
BAB "Real" Cost of 20 Colorado Districts		FALL 2013 K-12 FREE AND REDUCED LUNCH ELIGIBILITY BY SCHOOL			167	78%	\$ 0.50	\$ 1.12	\$ 0.02	3%	Calculation	Calculation	Calculation	Calculation	Calculation
DISTRICT NAME	SCHOOL CODE	SCHOOL NAME	K-12 COUNT	% FREE AND REDUCED ELIGIBLE	Average Daily Meal Participation	* Labor Cost Includes PERA, Medicare, and prorated cost of benefits.	Fruit 1/2 cup Brd/Mt 1-2 oz Milk 8 oz	Spoon Napkin, etc.	Orange-shaded schools fall into the 70-80% Free and Reduced eligibility.						

Spreadsheet Notes:

Row 2 - These are ACTUAL reimbursement rates received by ALL school districts in Colorado

Row 2 - These are ACTUAL costs experienced by Colorado Springs District 11.

Districts may input their own "actual" costs experienced by their districts into this spreadsheet. The spreadsheet is available from Rick Hughes (Rick.Hughes@d11.org.)

District costs may vary by a little bit and labor cost is generally LOWER in Colorado Springs than in Denver.

Food Cost Tab shows ACTUAL prices paid from US Foods order Guide

Labor Cost is estimated based on rate of pay, PERA, MediCare, and the cost of benefits

Rows without highlights are schools above 80% FRL Eligibility

Orange Highlighted ROWS are schools between 70-80% FRL Eligible as of October 2013 count

Column Y - Out of twenty school districts, only three DO NOT lose money by lowering the FRL threshold to 70%.

** Harrison SD utilizes Community Eligibility Program in their school district, which provides a higher overall reimbursement rate.

HUGHES, RICK HOWARD

From: Sarah Kurz <sarahkurz@livewellcolorado.org>
Sent: Monday, January 26, 2015 8:51 PM
To: HUGHES, RICK HOWARD; martin_shari@svvsd.org; ewallace2@cherrycreekschools.org; jwest@greeleyschools.org; tjorstad@sd27j.org; SANDOVAL, KRISTINA L
Subject: Connecting

Hello Rick and CSNA leadership.

I'm the new VP of Policy and Communications for LiveWell Colorado. We recently took a position of opposition to House Bill 1080, regarding school participation in the Breakfast after the Bell program. I know that you are supporting the bill, so I wanted to make sure you were aware of our position and why we took the position we did. I'm committed on behalf of LiveWell to bringing local perspectives into state level policy issues, and this was an issue where our local community partners were divided. We recognize that some school districts find Breakfast After the Bell to be burdensome financially, but we also know that over 100,000 kids are benefiting from the program who otherwise might not be eating at all in the morning. And by implementing the program at school districts with 70% FRL, an additional 70,000 kids will be served. Missed breakfast is associated with a number of poor health outcomes and health-compromising behaviors, including higher blood cholesterol and insulin levels, physical inactivity, disordered eating and unhealthy weight management practices, so a program that can avoid those challenges continues to show real promise to us.

Although we are on different sides of this piece of legislation, I sincerely hope that we can work together on policy issues going forward. I know that the implementation of Breakfast After the Bell hasn't been everything we had hoped – funding was left on the table, districts have felt it was burdensome and that they didn't have the support needed to implement it, and meals served haven't always been as nutritious as we might like. But I know we share the same goal of ensuring kids in Colorado have nutritious meals, so I hope we can be your partners in implementing policy (and maybe crafting future policy) that works towards that end.

I know that the timing is challenging right now in the middle of the session, but I'd be happy to sit down with you all whenever it's convenient for you. LiveWell also can be a convener if it would be useful to bring other folks to the table (e.g. funders, TA providers) to figure out how to make the Breakfast After the Bell legislation work for districts across the state.

Thank you.

Sarah Kurz



Sarah Kurz



The
Best District
to Learn, Work and Lead

10850 East Woodmen Road · Peyton, CO 80831
Tel: 719.495.1100 · Fax: 719.494.8900

January 26, 2015

Representative Joshi
Senator Hill

Dear Sirs:

District 49 supports HB15-1080 to amend the percentage of free and reduced qualified students that triggers the required participation by a public school in the Breakfast after the Bell Program. We believe there are several factors that were not considered in the current Breakfast after the Bell Program that will have a negative impact on District 49 as our demographics continue to change. Currently D49 does not have any sites impacted by the legislation; we do have 2 schools that are on the verge of qualifying and can forecast that they will be impacted within the next 3 years.

The first factor not considered by the current legislation is the stigma that comes from requiring schools who have 80% or greater students on the Free and Reduced lunch program and scheduled to go to 70% or greater in school year 15-16 to provide breakfast after the bell. In a District such as ours when our two higher risk schools reach the mandatory threshold of 70% they will be easily identified as the "poor schools". This is "overt identification" of our lower income families and setting them apart from the rest of our District.

District 49's second concern is the unfunded financial burden that will be placed on the District by having to feed 30% of our student population at the required sites with only the Federal reimbursement of \$0.28 per student in return. The intent of the original legislation was to take the Federal reimbursement from higher Free and Reduced qualifying schools to offset the cost of feeding a non-program qualified student for the Federal reimbursement of \$0.28. In a District profile such as D49, there are not schools with higher qualifying student to offset the burden that will be placed on the District by feeding 30% of the students at the qualifying sites. This will have a negative financial impact to the Nutrition program which could then need to be offset by General Fund dollars taking precious resources out of the classroom.

A third factor that is a concern for D49 is the cost to start up a new breakfast program. As this would be a new program in the district all equipment needed for the operation of the program would have to come from General Fund dollars as stipulated in the Federal Regulations governing the National School Lunch and Breakfast Program.

District 49 believes strongly that serving Breakfast after the Bell should be a local school district decision that is determined by District leadership to meet the needs of our students with the overall impact to the District in mind.

Thank you for your support of our child nutrition programs. We look forward to hearing from you and working with you on this critical issue.

Sincerely,

Sincerely,

Brett Ridgeway
Chief Business Officer

Jack Bay
Chief Operations Officer

Peter Hiltz
Chief Education Officer

Brett Ridgeway
Chief Business Officer

Jack Bay
Chief Operations Officer

Monty Lammers
Falcon Zone Leader

Kim McClelland
iConnect Zone Leader

Mike Pickering
POWER Zone Leader

Sean Dorsey
Sand Creek Zone Leader

To Whom It May Concern:

I am a registered dietitian practicing in Colorado Springs. I see almost entirely pediatric patients, both on an inpatient and an outpatient basis. I am also a former high school teacher, having taught in two different states. I am a huge proponent for all students eating breakfast in the morning. No one is capable of doing their best work when they have not had some nutrition to start out their day.

It has recently come to my attention that some elementary-aged children are being given breakfast in the classroom at some local schools through the Breakfast After the Bell. Other schools will provide breakfast before the start of school for students that would like it. There are many students in our schools that benefit from these programs, as the only meals they get are those provided at school. I am, however, concerned about some other students, as we are also facing an obesity epidemic in our country.

Within the last three weeks, I have had two obese, elementary-aged patients come to see me who receive breakfast at school in two different school districts in the city. Their physicians and their parents are concerned about their weight and their weight gain. In both cases, these children eat breakfast at home, and then they eat breakfast again when they get to school. One of these students was a participant in the Breakfast After the Bell program. The mother was very concerned about her child's weight and the fact that this student is getting two breakfasts. She would ask the teacher to not give her child breakfast in the classroom, but she doesn't want her child to be singled out by the teacher as being not allowed to eat when all the other students do. This mother was not willing to give up breakfast at home, however, because she was concerned largely about the lack of protein being provided on a daily basis. When the child has breakfast at home, the mother can control the content of what is eaten, allowing for a lower calorie, nutritionally complete meal.

The second child is a recipient of free lunch, and therefore free breakfast. This was not offered in the classroom, but before school in the cafeteria. Again, the concern was for the quality and protein content of the school-provided meal. The child told me that a favorite cold option was Cocoa Puffs with chocolate milk for breakfast. Another cereal option was Cinnamon Toast Crunch. As a dietitian, I would not offer those to my child at home, and would hope they are not being offered at school, but according to this child, these were the cereal options for breakfast. Hot breakfast is also an option, with choices such as pancakes. Again, the problem being faced by the parent is that she wants to provide her child with a healthy, protein containing breakfast to help maintain weight or encourage weight loss, but the child was also eating a high calorie, free breakfast at school.

Again, every child should have access to breakfast on a daily basis. I doubt that anyone involved with education would disagree. A very close look should be taken, however, to be sure that the children who do not need the school to provide breakfast are not getting more than they should. The problems I have seen just this month would only expand with an expansion of the Breakfast After the Bell program to schools with a lower level of free and reduced lunch students. Public schools should not and cannot be held entirely responsible for the nutritional wellbeing of our children; we cannot use public money to contribute further to the epidemic of obesity that is ever expanding among our children.

Thank you,

Karen Beers, MA, RD

3625 Gingham Way
Colorado Springs, CO 80918
719-510-9685
karenebeers@gmail.com

**RESOLUTION 2015-18
ON LIMITING THE BREAKFAST AFTER THE BELL LEGISLATION**

WHEREAS, HB 13-1006 was passed in 2013 to require a free breakfast to all free and reduced (FRL) meal students in schools with 80 percent or greater FRL status for school year 2014-15 and 70 percent or greater FRL status for school year 2015-16 and thereafter; and

WHEREAS, the requirement for a “free” breakfast program between 70 percent FRL and 80 percent FRL is economically unviable; and

WHEREAS, the requirement for a “free” breakfast program “after the bell” takes valuable time away from instruction; and

WHEREAS, school districts across the state are already losing money in the food service fund and having to subsidize the food service fund with general fund monies; and

WHEREAS, 139 schools across the state of Colorado are scheduled to be added for implementation when the minimum threshold for eligibility drops from 80 percent FRL to 70 percent FRL; and

WHEREAS, schools are still allowed to offer breakfast programs in their community regardless of FRL eligibility as a local control decision; and

WHEREAS, even as the legislature continues to reduce school funding, the legislature has passed multiple significant food service reform efforts, including but not limited to carbonated beverage restrictions, vending machine restrictions, indirect cost contribution restriction, breakfast after the bell requirements, costly changes to the requirements of what is served in school meals and how it is served, and now the new federal smart snack requirements all limiting economic flexibility in local school district food service programs without adequate revenue support. These laws impose additional unfunded obligations on school districts already burdened by reduced funding to implement the existing reforms (e.g. D11 Good Food Project,);

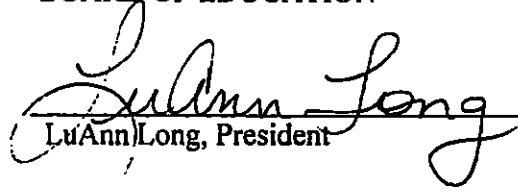
NOW THEREFORE BE IT RESOLVED, the Colorado Springs School District 11 Board of Education calls upon the Colorado legislature to modify the Breakfast After the Bell implementation threshold and freeze such threshold at 80 percent free and reduced meal eligibility.

Dated this 14th day of January, 2015.



Dr. Nicholas M. Gledich
Superintendent of Schools

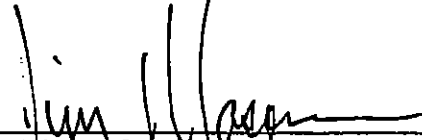
BOARD OF EDUCATION



LuAnn Long, President



Elaine Naleski, Vice President

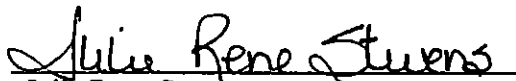


Jim Mason, Secretary

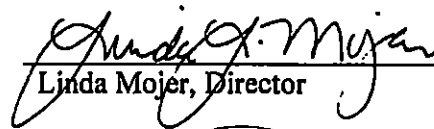


Nora Brown, Treasurer

ATTEST:



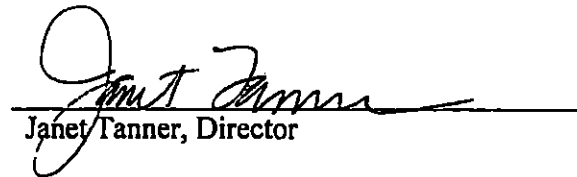
Julie Rene Stevens,
Secretary to the Board of Education



Linda Mojer, Director



Bob Null, Director



Janet Fanner, Director