

COLORADO

State Symbols and Emblems



State Animal:
Rocky Mountain bighorn sheep
(*Ovis canadensis*)
Adopted: May 1, 1961
Known for their agility and balance, these bighorn sheep are found only in the Rockies, usually above timberline in rugged mountainous areas.



State Flower:
(*Aquilegia scopulorum*)
Adopted: April 14, 1899
The schoolchildren of Colorado chose the columbine as the state flower in a statewide contest. This columbine is native to the Rocky Mountains, and state law makes it the duty of Colorado citizens to protect it from needless destruction or waste.



NOTE TO COMMITTEE:
This is NOT the layout design. It will be formatted once full text is supplied



State Insect:
Colorado hairstreak butterfly
(*Hypaurotis crysalus*)
Adopted: April 17, 1996
The hairstreak butterfly is less than two inches wide and has purple wings with a wide dark border and orange spots. It is native to Colorado and found in high elevations on both the eastern and western slopes.



State Rock: Yule marble
Adopted: March 9, 2004
Yule marble is a limestone found only in Colorado, white in color with a luminous quality. It can be seen on the floors of the State Capitol and on many national monuments.



How an Idea Becomes a Law in Colorado

fold

Hmm, it might be a good idea to have an official state insect ...



1. Idea brought to legislator

text text text text text
text text text text



2. Bill drafted and introduced in first house

text text text text text
text text text text



3. Committee hearing (public testimony heard)

text text text text text
text text text text



4. Bill debated and amended (second reading)

text text text text text
text text text text



5. First house votes (third reading)

text text text text text
text text text text

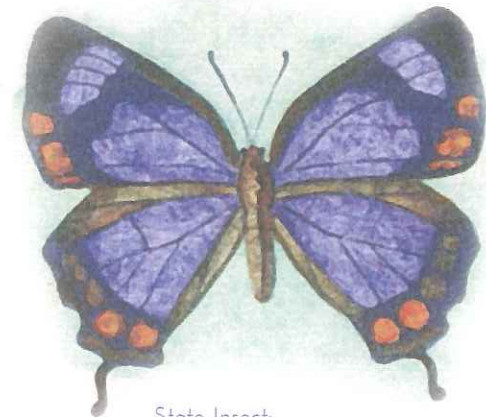


7. Bill is sent to Governor and signed.

Then when the bill is sent to the Governor, there are three more options:

- Governor signs
OR
- Bill becomes law without Governor's signature (Governor takes no action)
OR
- Governor vetoes

Another step could be that the legislature overrides the veto.



State Insect:
Colorado hairstreak butterfly
(*Hypauratis crysalus*)
Adopted: April 17, 1996
Heard as Senate Bill 96-122

NOTE TO COMMITTEE:

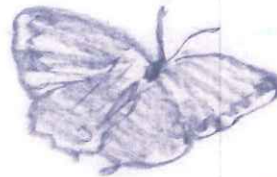
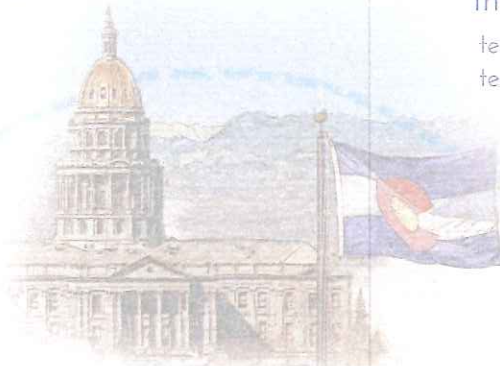
This is NOT a final design. Once full text is decided and concept approved, a full design will be drafted.



6. Process repeats in second house

After step 6, there are actually three possibilities:

- Bill is unchanged and sent to Governor
OR
- Bill returns to first house for concurrence with any changes made in second house
OR
- Conference committee is formed to resolve differences



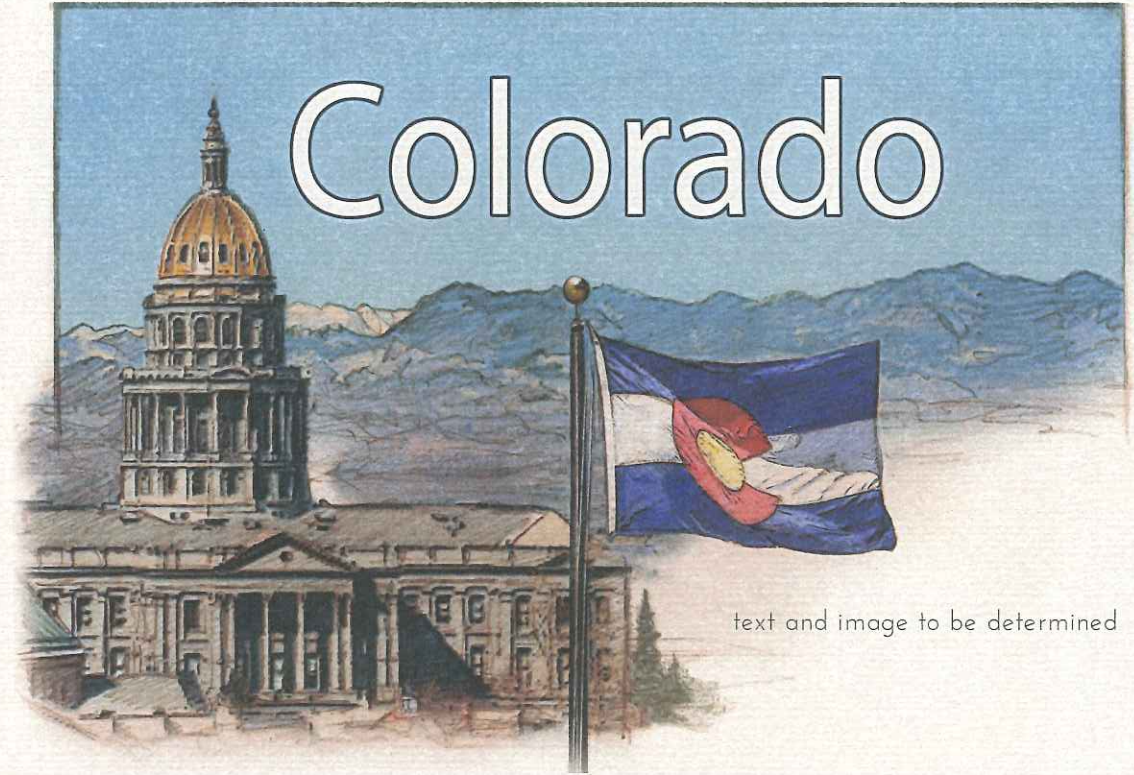
fold

Can you identify the state symbols shown in this picture?



NOTE TO COMMITTEE:

This is NOT the image to be used. It is a sample of potential art style.



text and image to be determined

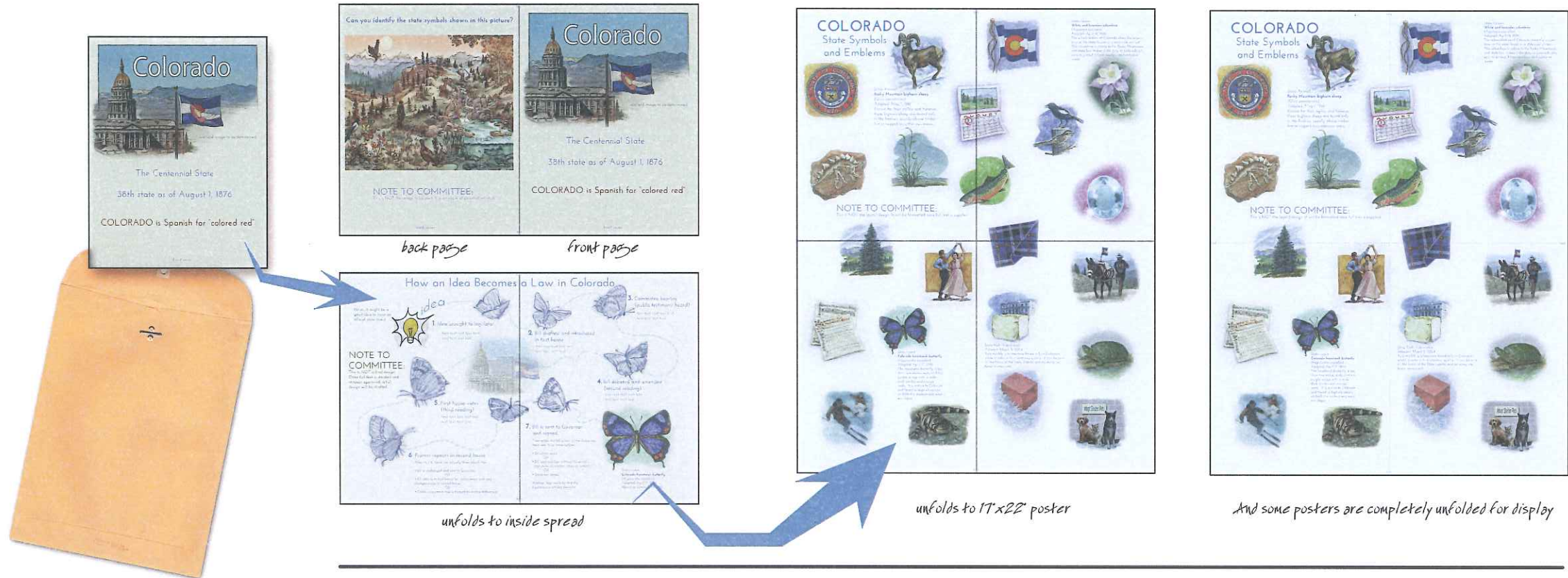
The Centennial State

38th state as of August 1, 1876

COLORADO is Spanish for "colored red"

Colorado emblems poster-brochure

(These pages do not indicate final layout design of graphics)



8.5" x 11" folded poster fits into standard large envelope

Basic graphic design package with current symbol artwork:

Poster layout	\$ 1000
Front page illustration, to be determined, and layout	1200
Back page illustration of 'hidden emblems' and layout	1500
Middle spread illustrations of 'Idea to Law' and layout	1250
	\$ 4,950

+

or

17 symbols refurbished (photoshop editing):	
\$150 each emblem	\$ 2,550
17 symbols redone (all new artwork):	
\$ 300 each emblem	\$ 5,100

Thomas Haller Buchanan
303.526.0413

(There are 22 existing emblems, with five that I consider up to speed)