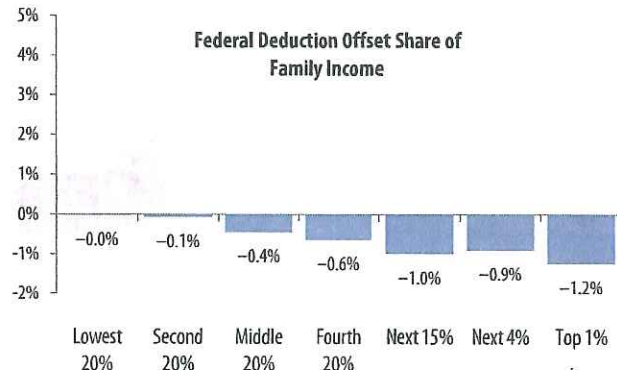
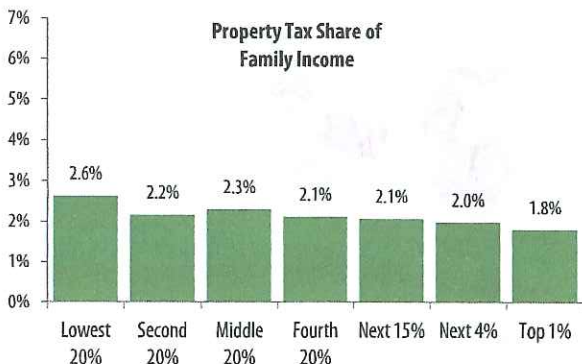
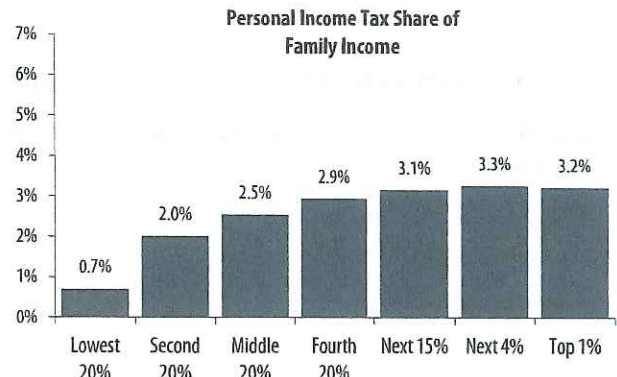
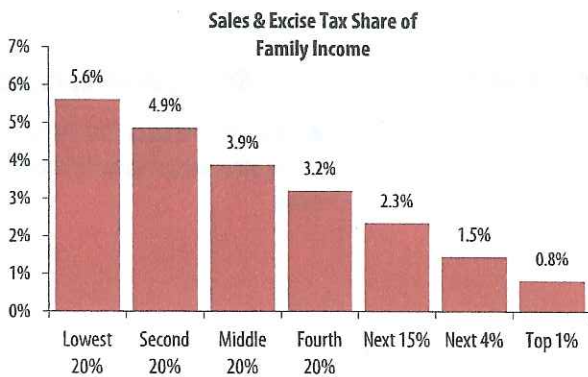
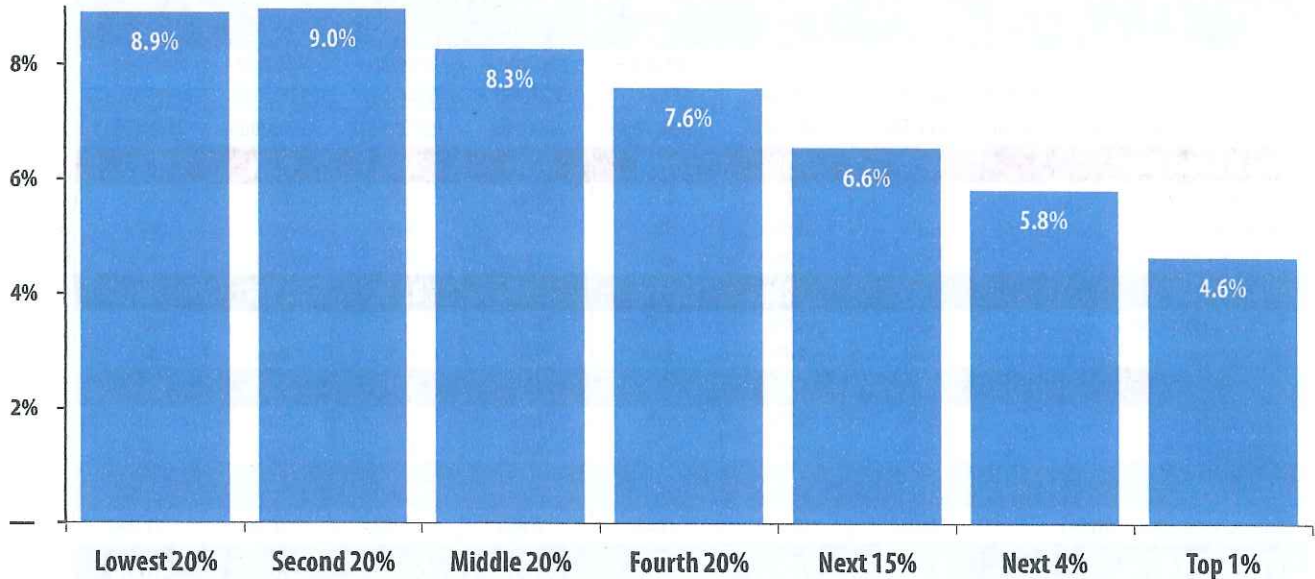


Colorado State & Local Taxes

Shares of family income for non-elderly taxpayers



Note: Figures show permanent law in Colorado enacted through January 2, 2013 at 2010 income levels. Top figure represents total state and local taxes as a share of personal income, post-federal offset.

Colorado State & Local Taxes

Details, Tax Code Features, & Recent Developments

Income Group	Lowest 20%	Second 20%	Middle 20%	Fourth 20%	Top 20%		
					Next 15%	Next 4%	TOP 1%
Income Range	Less than \$21,000	\$21,000 – \$39,000	\$39,000 – \$59,000	\$59,000 – \$97,000	\$97,000 – \$186,000	\$186,000 – \$480,000	\$480,000 or more
Average Income in Group	\$11,500	\$28,900	\$48,400	\$74,900	\$128,600	\$272,000	\$1,345,400
Sales & Excise Taxes	5.6%	4.9%	3.9%	3.2%	2.3%	1.5%	0.8%
General Sales—Individuals	2.7%	2.6%	2.1%	1.8%	1.4%	0.9%	0.5%
Other Sales & Excise—Ind.	0.8%	0.6%	0.5%	0.3%	0.2%	0.1%	0.0%
Sales & Excise on Business	2.1%	1.7%	1.3%	1.0%	0.7%	0.5%	0.3%
Property Taxes	2.6%	2.2%	2.3%	2.1%	2.1%	2.0%	1.8%
Property Taxes on Families	2.6%	2.0%	2.2%	2.0%	1.8%	1.4%	0.5%
Other Property Taxes	0.1%	0.1%	0.1%	0.2%	0.2%	0.6%	1.3%
Income Taxes	0.7%	2.0%	2.5%	2.9%	3.2%	3.3%	3.3%
Personal Income Tax	0.7%	2.0%	2.5%	2.9%	3.1%	3.3%	3.2%
Corporate Income Tax	0.0%	0.0%	0.0%	0.0%	0.0%	0.0%	0.1%
Total Taxes	8.9%	9.0%	8.7%	8.2%	7.6%	6.7%	5.9%
Federal Deduction Offset	0.0%	-0.1%	-0.4%	-0.6%	-1.0%	-0.9%	-1.2%
OVERALL TOTAL	8.9%	9.0%	8.3%	7.6%	6.6%	5.8%	4.6%

Note: Table shows detailed breakout of data on previous page.

Progressive Features

- ✓ Comparatively large standard deduction and personal exemption
- ✓ Standard deduction and personal exemption indexed to inflation
- ✓ Sales tax base excludes groceries

Regressive Features

- ✗ Income tax uses a single rate structure

Recent Developments

- ▲ Expanded the sales tax base to include, among other things, sugared beverages and candy

States With a Flat Rate Personal Income Tax

