



State of Colorado Recovery Office

Update as of 11/4

Jerre Stead, Chief Recovery Officer
Kerri Nelson, Recovery Chief of Staff



Summary

- 55 days have now passed since our September 11 Flood Disaster occurred
- We quickly established a dedicated team that is a combination of IHS colleagues and State colleagues
 - Created an overall Recovery Playbook that outlines our priorities each week with over 62 metrics
 - Launched a dedicated communication / media team
 - Built an external website for our 24 impacted counties as a place to go for help and the latest news
- Progress has been swift, and we have over 1,200 people dedicated to the recovery effort from FEMA, CDOT, OEM and National Guard
- Good progress with both Public Assistance and Individual Assistance from FEMA – however more work to do
- Fund Raising and Volunteer Effort going strong with over \$10M raised to date
- Priorities:
 1. Housing – both short and long term
 2. 100% of State Roads / Hwys open by Dec 1st
 3. An integrated and sustainable Disaster Recovery Process for the State of Colorado



Colorado Recovery Objective

- 100% Recovery from 2013 Flood Disaster – and that Colorado is more innovative, safer and resilient in the following areas:
 - Infrastructure
 - Individuals
 - Economy
 - Community
 - Ecosystem / Environment



Overall Purpose of Colorado Recovery Office

1. Set priorities

- Ensure appropriate sequencing is in place and visible internally and externally
- Ensure resources are appropriately applied to avoid future audit findings and disallowed costs
- Ensure all Federal resources are identified and accessed

2. Deliver results with an ongoing sense of urgency

- Assist local communities in having adequate match funding
- Assist agencies with any roadblocks to speedy recovery

3. Build for the future – make things better than before

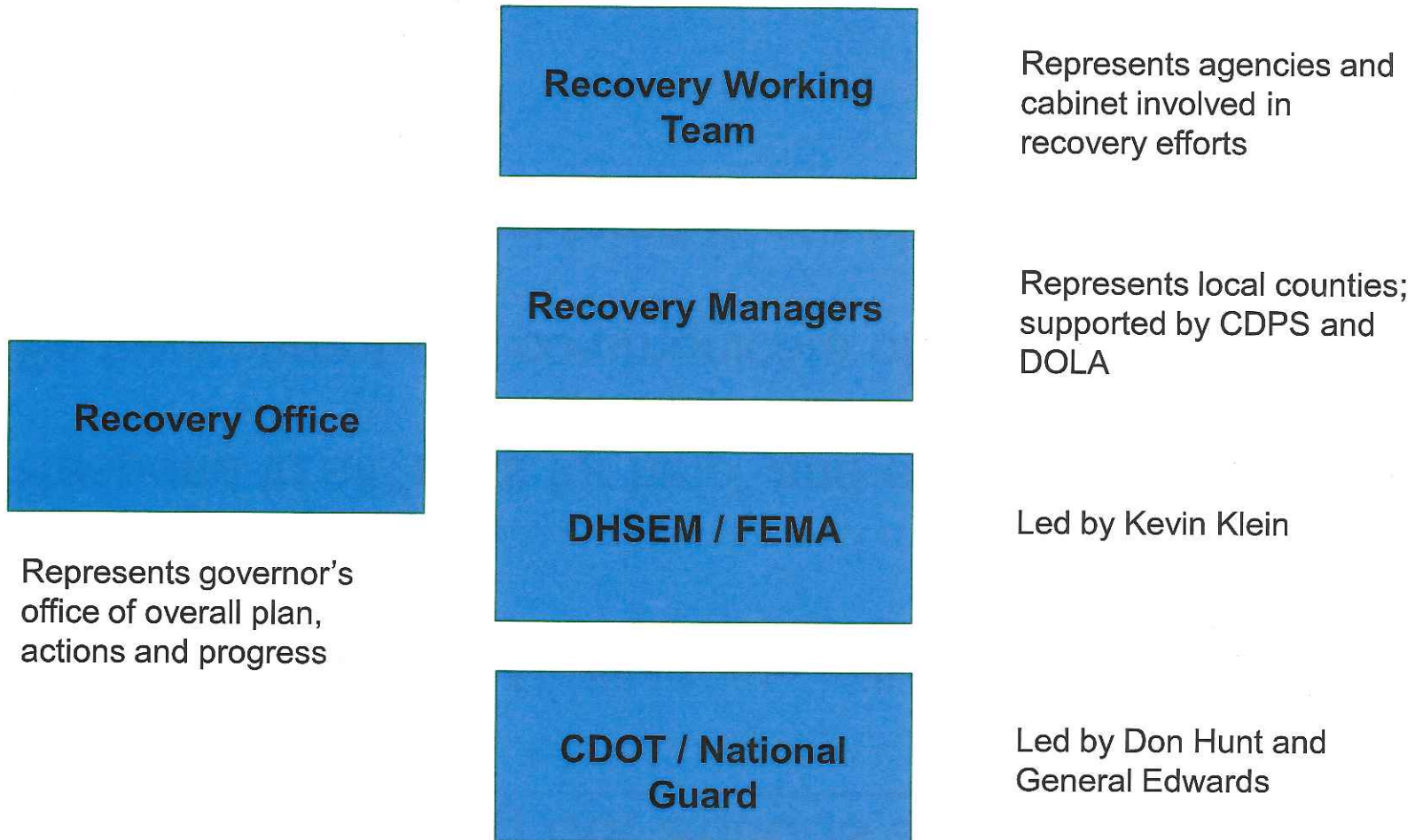
- Ensure 90% of short-term actions build towards a longer-term plan / vision



Principles guiding our actions and decisions

- ✓ Health and safety of individuals will always be our first priority
- ✓ Respond to all “asks for help” and ensure 100% follow-up
- ✓ Be transparent and communicate often
- ✓ Winter must be considered in our planning
- ✓ Fiscal responsibility

Organized to drive towards action, transparency and results





Recovery Working Team

Agriculture	Ron Carleton
Corrections	Kellie Wasko
Economic Development	Kelly Manning
Education	Keith Owen / Janelle Asmus
Health Care Policy & Financing	Tom Massey
Higher Education (CCHE)	Chad Marturano / Jennifer Sobanet
Housing	Pat Coyle
Human Services	Susan Beckman
Labor & Employment	Jeff Fitzgerald
Local Affairs	Chantal Unfug
Military and Veterans Affairs	Colonel Alan Buck
Natural Resources	Madeleine West
Personnel & Administration	Kara Veitch
Public Health & Environment	Karin McGowan
Public Safety	Dave Hard
Regulatory Agencies	Mike Whatley / Drew Bolin
Revenue	John Vecchiarelli
Transportation	Scot Cuthbertson
Energy Office	Peter Rusin
Information Technology	Norman Weeks

24 Impacted Counties with 11 approved for both PA and IA (in green)



County	Date of Executive Order	Public Assistance	Individual Assistance
Adams	September 13, 2013	X	X
Arapahoe	September 13, 2013	X	X
Boulder	September 13, 2013	X	X
Broomfield	September 13, 2013	X (B only)	Denied 10/31
Chaffee	October 8, 2013		
Clear Creek	September 19, 2013	X	X
Crowley	October 8, 2013	X	
Denver	September 13, 2013	X	Denied 10/31
El Paso	September 13, 2013	X	X
Fremont	September 13, 2013	X	X
Gilpin	October 8, 2013	X	Denied 10/31
Jefferson	September 13, 2013	X	X
Lake	October 8, 2013	X	
Larimer	September 13, 2013	X	X
Lincoln	October 8, 2013	X	
Logan	September 13, 2013	X	X
Morgan	September 13, 2013	X	X
Otero	October 8, 2013	Denied 10/31	Denied 10/31
Park	October 8, 2013		
Prowers	October 8, 2013		
Pueblo	September 13, 2013	X (B only)	Denied 10/31
Sedgwick	September 19, 2013	X	
Washington	September 13, 2013	X	
Weld	September 13, 2013	X	X
TOTALS		20	11

Note:
Appeals
underway for
all denials



Funding Resources

Type	Dollars Allocated to date	For Who	Total Expected to be Allocated	Average Allocated
Public Assistance	\$2.6M	Communities	\$164M	
Individual Assistance (FEMA)	\$49.8M	15K homes have received funding (26K have applied to date)	\$50M	\$3,004 192 max awards have been issues at \$31,900 each
SBA Loans	\$55.4M	1,198 Homes and 141 Businesses	N/A	Homes \$39,866 Businesses \$61,694
Community Development Block Grant (CDBG)	\$0	Housing	\$1B	TBD
U.S. Dept of Educations' Project SERV Grant	\$750,000	Impacted School Districts; e.g. mental health support; emergency school facility provisions such as generators, portalets and temp re-location	N/A	N/A
National Emergency Grant for CDLE	\$4,609,937	Impacted citizens to assist in securing jobs that help in the recovery effort	N/A	
Federal Hwy Administration Emergency Relief Program	\$450M	Repair and build state hwys (27 closed; 485 miles impacted)	\$450M	N/A
Colorado Water Conservation Board	\$12M approved	Available for low interest loans to help repair flood damaged systems	\$40M	
Fund Raising	N/A	Individuals for housing	\$14,751,435	
Total	\$575.2M		TBD	



Allocations to the Disaster Emergency Fund

Disaster Emergency Allocations and Sources of Revenue Calendar Year 2013

Source of Funding	Royal Gorge	Black Forest	Klickus	Big Meadows	East Park	West Fork Complex	Lime Gulch	Manitou Flooding	Red Canyon Fire	September Floods	TOTAL
Disaster Emergency Fund Balance		6,800,000	150,000	50,000	3,000,000						10,000,000
Controlled Maintenance Trust Fund	1,500,000	2,100,000				12,500,000	550,000	400,000	2,000,000	41,500,000	60,550,000
Health Care Policy and Financing FY 2012-13											
(5) Other Medical Services, Medicare Modernization State Contribution Payment		2,100,000									2,100,000
Subtotal HCPF FY 2012-13	-	2,100,000	-	-	-	-	-	-	-	-	2,100,000
Corrections FY 2012-13											
Parole Board Personal Services		37,640									37,640
Drug and Alcohol Personal Services		451,090									451,090
Mental Health Personal Services		1,057,260									1,057,260
Sex Offender Treatment Personal Services		99,259									99,259
Community YOS Phase II and III Personal Services		221,457									221,457
Payments to Pre-Release Parole Revocation Facilities		133,294									133,294
Subtotal DOC FY 2012-13	-	2,000,000	-	-	-	-	-	-	-	-	2,000,000
Health Care Policy and Financing FY 2013-14											
Medical Services Premiums										50,000,000	50,000,000
Subtotal HCPF FY 2013-14										50,000,000	50,000,000
TOTAL ESTIMATED BY FIRE	1,500,000	13,000,000	150,000	50,000	3,000,000	12,500,000	550,000	400,000	2,000,000	91,500,000	124,650,000



Highlights and Accomplishments (1 of 4)

INFRASTRUCTURE

- CDOT
 - A National Guard ceremony on 10/29 with approx. 700 attendees celebrated the successes and recognized and thanked the CO and out-of-state National Guard teams as well as the ACE and CDOT teams that are beating all expectations and deadlines on rebuilding and opening our impacted state roadways.
 - Project completion / ribbon cutting on US 36 from Lyons to Estes Park is scheduled for 11/4.
- The Town of Lyons wastewater treatment plant has resumed operating. About 90% of the Town has wastewater sewer service through permanent or temporary solutions and the remaining 10% is expected to have wastewater service in approximately 2 weeks once collection pipelines are sealed. The Town recently completed flushing and disinfection of most of their distribution system; they are off of the boil water advisory.
- Work on Larimer CR 47 is proceeding fairly quickly. There is just one section that remains to provide some level of surface that is passable. The Larimer County Sherriff's Office and residents from Big Elk scouted the road on ATV's and have posted photos and video of the trip. Poudre Valley Rural Electric Association (PVREA) was notified that they can accelerate their plans for access to do repairs.



Highlights and Accomplishments (2 of 4)

INDIVIDUAL

- FEMA has approved a third extension to the Transitional Sheltering Assistance (TSA) program, which pays for eligible flood evacuees to stay in participating hotels and motels. Eligible individuals and families will continue to have a safe place to stay through Nov. 16 (checkout Nov. 17). The previous checkout date was Nov. 3.
- The Dept. of Revenue has modified its internal processes to speed turnaround on tax clearance letters needed for SBA loan applicants and waive the \$7. fee. The Dept. has also amended its processes to prioritize construction material exemption requests.

COMMUNITY

- Frazier Meadows nursing home facility in Boulder has now transitioned all of its clients from the nursing component and the assisted living component into other facilities. As a result of the flood, Frazier Meadows had to lay off 40-50 people in which the facility continues to pay 100% unemployment compensation; the facility has hired a company to help the affected individuals obtain jobs.
- The Department of Ag. helped promote the CSU Extension Northern Colorado Flood Recovery Assistance Meeting in Loveland on 10/31 with representatives from various Federal and State agencies and local experts.
- DORA has produced a 15 second Public Service Announcement (PSA) for Radio and TV alerting homeowners with electrical or plumbing damage from floodwaters to the Free Damage Assessment Program offered by DORA's Division of Professions and Occupations. This PSA is scheduled to air on KUSA and KCNC for the month of November and on Clear Channel radio stations in early November.



Highlights and Accomplishments (3 of 4)

- This week the PUC approved Xcel Energy's new "Flood Victim DSM (Demand Side Management) Rebate Program" which will be launched immediately. The rebates will cover the cost difference between purchasing standard appliances and more energy efficient ones. Eligibility in the program will be limited to residential and business customers qualifying for assistance from FEMA and will be dependent on such customers providing evidence to the Company that they have qualified for such assistance. The "flood relief rebates" are anticipated to be delivered before the end of 2013 and are expected to continue into 2014
- The Civil Rights Commission held a public forum in Greeley on October 23 focused on flood impact and primarily housing discrimination, 80-100 people attended. Three attorneys attended at the request of CCRD's Director and the Commission to answer questions on landlord/tenant issues and other primarily housing-related matters.
- The Colorado Energy Office is working with a local weatherization agency, Long's Peak Energy Conservation (LPEC) that serves Longmont. The CEO's weatherization team along with LPEC had an outreach event on Oct. 14 to talk about resources including non-weatherization resources. The team also went door to door to provide information to the 136 homes, 18 are enrolled for services to date. The CEO's next step in the recovery area is to use GIS mapping to identify former weatherization clients and offer them resources.

ECONOMIC

- **\$61,694:** The average SBA disaster loan for Colorado businesses with storm or flood damage. (All business loans-physical and economic injury....very little economic injury as of yet due to timing). **\$39,866:** The average SBA disaster loan for Colorado residents with storm or flood damage. (homeowners and renters)



Highlights and Accomplishments (4 of 4)

ECOSYSTEM / ENVIRONMENT

- The CDPHE Watershed Section collected water samples in the same South Platte basin locations as were sampled last month. As last time, analysis will include e coli, metals, VOCs and SVOCs. However this time the EPA has offered use of their lab in Golden to complete the analysis at their cost. The results aren't in yet but the EPA is prioritizing them.
- CDPHE has processed 108 asbestos abatement and demolition permits.
- Parts of Eldorado Canyon State Park re-opened Friday, 11/1 for the first time since flooding in Boulder County.
- CEO working with the local governments on rebuilding with greater sustainability

ColoradoUnited.com

linking people to information and resources in challenging times



Key Stats

12,402 page views
2.12 minute average page view
Most viewed pages:

- Get Help
- Contact Us
- Travel (Maps)

24% returning visitors
24% coming in from mobile traffic

The screenshot shows the ColoradoUnited.com website. At the top left is the logo for ColoradoUnited, which consists of a green triangle with "CO" inside and the word "United" in green. To the right of the logo is a search bar with the text "Search this site". Below the logo is a navigation menu with links: Home, Get Help, Travel and Local Info, Recovery Map, Home Safety, Donate and Volunteer, About, and Contact Us. The main heading reads "Official State of Colorado Website for Recovery Information and Resources". Below this are three columns of featured content:

- Latest News and Issues:** A photo of a man in a blue jacket holding a baby, with a woman and another man looking at a document. Text below: "Latest updates on flood recovery efforts. Read more >>"
- Impacted Areas:** A photo of a flooded area with debris. Text below: "Impacted areas and road closures. Read more >>"
- Get Help:** A photo of people in yellow protective suits working in a flooded area. Text below: "Recovery resources for people and businesses. Learn more >>"

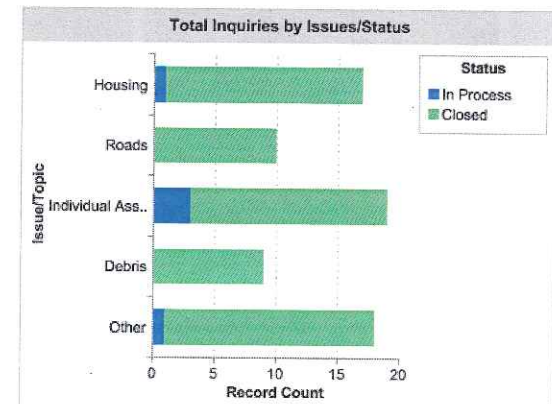
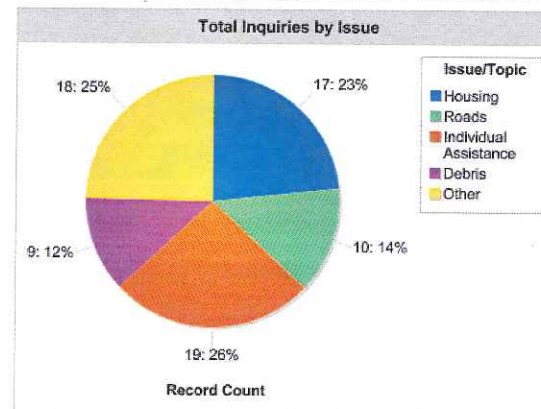
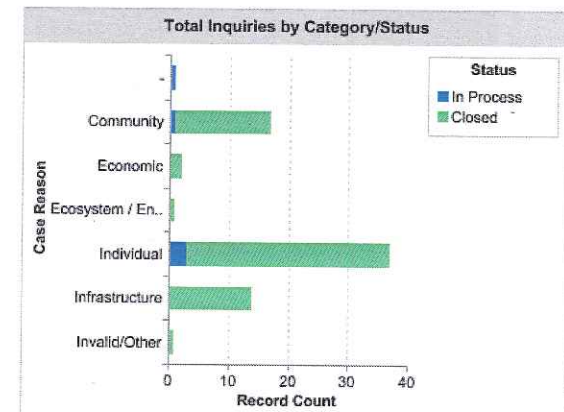
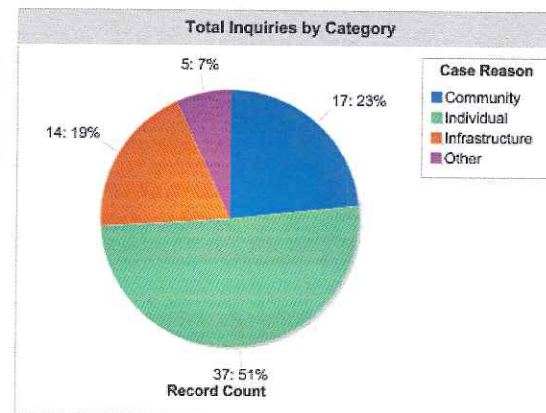
Below these columns is a large photo of a crowd of people at a volunteer event. Overlaid on the photo is the text "Volunteer and donate to the flood relief efforts" and a button that says "Learn how you can help >>".

At the bottom of the page, it says "ColoradoUnited presented by Colorado for Colorado in partnership with". Below this are the logos for SupportLocal.com and the Colorado Volunteer Network. At the very bottom, it says "© 2013 Governor's Office - The State of Colorado | All rights reserved".



ColoradoUnited - Contact Us Metrics

Category	Total	No. Closed	No. Open
Infrastructure	15	14	1
Individual	37	34	3
Economic	2	2	0
Community	17	16	1
Environment	1	1	0
Other	2	1	1
Total	74	68	6



Examples of Queries:

- "Do you have any suggestions about where I can go for help after the flooding here in Colorado? I have been denied help from FEMA and the SBA. I have had major damage to my home and farm, have no flood insurance, and I am at a total loss at where to turn for assistance. I live in Arapahoe County not Boulder or Estes Park." (Arapahoe)
- "I was ready to start chemotherapy at the time the flood happened. My insurance agent said my property was the worst damage he had seen in 29 years of adjusting claims. FEMA inspectors stated total loss. Home insurance gives 0 help. SBA won't give me a loan due to bad credit. This is completely unfair, my credit was 720 before 4th stage colorectal cancer. FEMA maxes out \$31,900. I lost 100s of Thousands, my retirement, life savings, Others loose 10-20 thousand and FEMA pays them the full amount. The government is not fair to me" (Lyons)
- "I am requesting help of any kind due to being devastated in the storms." (Pueblo)

Rules and Policies Suspended/Changed (1 of 2)



State Agency	Signed by Governor	Policies/Laws/Rules Changed/Suspended	Benefit	When to reinstate/revert?
N/A	N/A	US Treasury Secretary granted a waiver pertaining to the Low Income Housing Tax Credit (this includes 9% LIHTC and PAB 4% LIHTC properties).	The waiver allows both kinds of existing properties to rent units to flood victims at any income level.	N/A
CDPS	Verbal OK on 10/3	CDPS's request for a fiscal rule waiver for an advance payment to the State of Utah for an estimated cost of \$600,000 for the Utah National Guard	Able to utilize the Utah National Guard for rebuilding efforts.	
DNR	YES	Suspend the provision regarding permitting for construction materials extraction (C.R.S. 34-32.5-111)	Suspending permit requirements for such sites would reduce permitting time from 20 days to 1-3 days and allow quicker access to necessary materials	December 1, 2013 (90 days suspension)
DNR	YES	Suspend the provision regarding the process to obtain amendments or technical revisions to construction materials permits (C.R.S. 34-32.5-101)	This suspension will allow prompt repair of facilities and site remediation on existing permitted mine sites.	October 30, 2013 (30 days suspension)

CRO Owner: SFD

Rules and Policies Suspended/Changed (2 of 2)



State Agency	Signed by Governor	Policies/Laws/Rules Changed/Suspended	Benefit	When to reinstate/revert?
PUC		The CEO (Colorado Energy Office) as a co-partner with the PUC on energy issues coordinated an "hours of service" waiver.	The waiver is helping enable the necessary trucking and driver logistics in order to transport adequate fuel supplies to the western slope.	Operations are in are returning to normal (10/11)
CDOT	Verbal okay given	Suspend requirement for Private Contracting of Public projects exceeding \$150K	Allow CDOT maint. staff to undertake projects that may exceed \$150,000 in value	Effective until Executive Orders D 2013-026 and D 2013-027 expire
CDOT	Verbal okay given	Suspend requirement of Transportation Comm. approval of \$50K-\$150K projects	Eliminate delays to projects due to Commission meeting schedule.	
CDOT	Verbal okay given	Suspend requirement not to award contracts for which bids vary from CDOT estimates	Contracts are not withheld or delayed due to limited number of bids and when bids do not closely mirror CDOT est.	



Key Metrics Dashboard as of 11/4 (1/4)

Priority	Area	Source	Metric	Baseline	As of 11/4	Goal	
Infrastructure	Water	CDPHE	% drinkable water	94%	99.5%	100%	
				587	619	622	
			% Waste Water Treatment Facilities (WWTF) open	97.1%	99.6%	100%	
			1080 total facilities	1049	1076	1080	
			# of WWTF not operational	31	4	0	
			# of WWTF needing service restored	15	4	0	
			# of WWTF needing repair	32	28	0	
			# drinking water treatment plants needing service restored	11	3	0	
			# drinking water treatment plants needing repair	36	25	0	
			DNR	% of dams inspected	100%	100%	100%
				# of dams inspected	207	207	207
				% of dams with flood caused safety concerns	207	12% (25)	0%
	% of diversion structures and stream gauges inspected and identified as needing repaired	220		11% (25)	100%(220)		
	Gas / Power	PUC	% habitable homes with gas/power	98.68%	99.98%	100%	
			1,078,987 total (At PEAK, 14,230 w/o)	1,078,987	1,078,848	N/A	
			# customers without natural gas	757	341	0	
			# customers without electricity	191	42	0	
	Bridges	CDOT	# of bridges inspected in impacted areas	0	411	411 (100%)	
			# of bridges needing repair	120	0	0	
	State Highway	CDOT	# closed	27	5	0	
System Closures	# now open		0	22	27		
State Highway	CDOT	% now open	0%	81%	100%		
		Miles Impacted	485	94	0		
		% miles impacted	N/A	19%	0%		

CRO Owner: ABB



Key Metrics Dashboard as of 11/4 (2/4)

Priority	Area	Source	Metric	Baseline	As of 11/4	Goal
Individual	Fatalities	CDPS	# people Boulder (4), El Paso (2), Clear Creek (1), Larimer (2), Jefferson (1)	8	9	N/A
	Evacuation		# people	18,147	1,521	N/A
	Shelters	FEMA	# shelters	14	0	0
			# people in shelters	536	0	0
	Missing	CDPS	# people	1,200	0	0
	Homeless Children	CDE	# homeless children displaced	250	1,750	N/A
			% back in school	0%	100%	100%
	Housing	Pat Coyle	# families in TSA (transitional sheltering assistance)	479	374	0
	Safe Accessible Child Care	CDHS-OEC	# closed facilities (aggregate capacity) [baseline not final, OEC is in process of solidifying]	238 (13,148)	9 (696)	0
			# displaced* facilities (aggregate capacity)	7 (273)	5 (153)	0
			# of timely eligibility determinations	99%	99%	100%
	Counseling	CDHS-OBH	Crisis Counseling Services	0	1806	N/A
	Legal	Stephanie Donner	free legal services provided by Colorado Bar volunteers – number of cases	0	288	N/A
		Social	CDLE	# of people assisted through Disaster Unemployment Assistance and UI applications	0	434
	# of businesses granted extension on unemployment insurance wage period filing (blanket extension)			0	48,060 no change	N/A
# of people employed through the recovery National Emergency Grant	0			0	290	
211 Calls (Salvation Army)	CDPS	# calls (flood to date)	0	5,427	5,000	

CRO Owner: ABB



Key Metrics Dashboard as of 11/4 (3/4)

Priority	Area	Source	Metric	Baseline	As of 11/4	Goal
Economic Recovery	Small Businesses	SBA/SBDC	\$ loans (Homes \$47.1M / Businesses \$3.3M) (as of 11/1/2013)	0	\$55.4 M	N/A
	Businesses	DOLA	# commercial buildings damaged (static for now)	765	765	N/A
	Businesses	DOLA	# destroyed (static for now)	203	203	N/A
	Housing	CDPS	# homes destroyed	1,852	143	N/A
			# homes applied for FEMA assistance	0	26,634	26,000
			# homes received funding	0	15,396	26,000
			FEMA \$ approved (individual assistance)	0	\$49.875 M	\$50.0 M
		Pat Coyle	% Damage Assessments complete	0%	65%	100%
			HUD \$ allocated (CDBG)	0	0	\$1B
			# households w/ income under \$24K annually	1,276	1,276	N/A
			# homes abandoned/foreclosed	0	0	N/A
	Communities	CDPS	FEMA \$ approved (public assistance)	0	\$2.6M	\$164 M
	Policy	S. Donner	# policies / regulations suspended	0	8	N/A
	USDA	CDA	# farm services assistance provided	0	0	N/A
	Agriculture	Dept. of Ag	Acres damaged of 11.5M total *	92,000	92,000	N/A
			% of acres damaged	.08% of total	.08%	N/A
			Acres of cropland damaged of 11.5M total	32,113	32,113	N/A
			% of cropland damaged	0.0002%	0.0002%	N/A
			No. of farms affected	0	1,200	N/A
			No. of farm implements (equipment) damaged (\$)	0	112 (\$1.2M)	N/A
No. of farm dwellings and service buildings damaged (\$)			0	150 (\$12.5M)	N/A	

CRO Owner: ABB

* FSA reported that 1000 acres of winter wheat will not be planted because of the flooding. This number is expected to increase.



Key Metrics Dashboard as of 11/4 (4/4)

Priority	Area	Source	Metric	Baseline	As of 11/4	Goal	
Community	Counties Approved for FEMA, FHwy and DOH funding	CDPS	# counties	0	18	24	
	Recovery Manager	DOLA / CDPS	% Counties with Recovery Manager	0%	50%	100%	
	Schools	Dept. of Education	# schools affected by closures	0	3	6	
			# school districts with expanded Oct student count date (Nov. 10 th)	921	0	0	
	Fund Raising	Recovery Off.	# counties with active program in place	33	36	N/A	
Ecosystem / Environment	Oil and Gas	DNR	Oil (Spilled Gallons)	0	1	24	
			Sites inspected in flood-impacted area	34K	48,250	N/A	
			Oil sites returned to production	0	1907	TBD	
	Pollution	CDPHE				Approx. 90%	
					100%	71%	100%
						(1838 out of 2601 wells)	
		Raw Sewage (Gallons Spilled)	20M	20M	N/A		
		Partially Treated Sewage (Gallons Spilled)	200M	200M	N/A		
		# Water Quality Samples Exceeding Safe E coli Levels	29	14	N/A		



Flood Resources Summary

Resources Allocated (#FTE)

Team	Week of 10/14	Week of 10/21	Week of 10/28	Week of 11/4
FEMA	1,213	1223	1113	1048
CDOT	131	99	98	108
National Guard (CO)	48	62	60	23
National Guard (UT)	120	117 (most departed 10/20)	18	55
National Guard (MT)	0	31	31 (departed 10/26)	0
National Guard (KS)	0	77	77	0 (departed 10/30)
Army Corp of Engineers	26	24	23	32
OEM	35	40	40	40
IHS	4	4	4	4
Other (PR, Tech)	11	11	11	11
Total	1,558	1,688	1,475	1,213

Fundraising (dollars and In-kind)

Program	Owner	\$ Goal	\$ Actual	\$ In-kind	Notes
United Way			5,737,666		Raised and anticipated
Red Cross			4,000,000		
Habitat for Humanity					
Help Colorado Now			5,735,655		
Total			\$15,473,321	\$2,356,807	

Volunteers (# people)

Program	Owner	# Hours	\$ Estimated Value	Date Complete
All Hands				
IHS				
211 (manned by S. Army)				
United Way				
Total		269,330	\$6,041,084.91	As of 10/31

