



**Sinclair Pipeline Company**



# PIPELINE SAFETY INFORMATION

T23 - P1 - 1566

\*\*\*\*\*ECRWSS\*\*B-007 POSTAL CUSTOMER

PRSR1 STD  
U.S. POSTAGE  
PAID  
DENVER, CO  
PERMIT NO. 51

**Sinclair Pipeline Company**  
P.O. Box 185  
Sinclair, Wyoming 82334

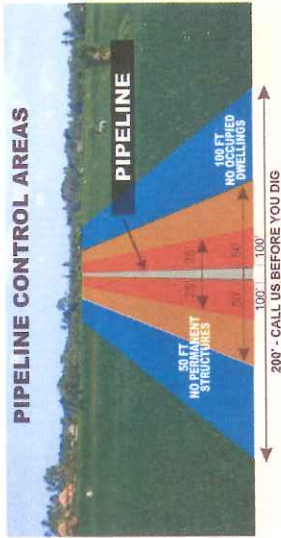


## HOW TO IDENTIFY A PETROLEUM PIPELINE LEAK

Often you can see or smell a pipeline leak. The following signs might indicate an petroleum leak:

- A strange or pungent odor near the pipeline
- A hissing or roaring sound (from escaping petroleum)
- A patch of dead or discolored vegetation in an otherwise green setting along a pipeline
- Continuous bubbling in wet, flooded areas or marshlands, rivers, creeks and baysous.

If you suspect a leak, please do not attempt to stop the pipeline's flow by closing any valves or operating any of the pipeline equipment. Pipelines are normally operated under high pressure regulated by the product that they transport. Attempting to close valves or the operation of equipment could endanger lives and property.



## WHAT TO DO IF YOU SUSPECT A LEAK!

The first concern should be for the personal safety of people. Follow these steps:

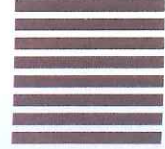
- Turn off any machinery and/or equipment in the immediate area.
- Do not create any sparks or heat sources, which could ignite escaping petroleum. For example, do not start a car, turn a light switch on or off, or light a match or cigarette. Turn off any lit gas pilots.
- Immediately leave the area by foot in a direction away from the vapors or fumes.
- Warn others to stay away from the leak.
- Do not drive into or go near the area around the leak. The car's engine might ignite the vapor cloud or deplete the oxygen in the cars engine causing it to stall trapping you in the vapors.
- Notify us and give your name, the location and a description of the leak. For our pipelines call us at (800) 321-3994 or the emergency dispatch for your county.

**BUSINESS REPLY MAIL**  
FIRST-CLASS MAIL PERMIT NO. 7289 SALT LAKE CITY UT

POSTAGE WILL BE PAID BY ADDRESSEE



NO POSTAGE  
NECESSARY  
IF MAILED  
IN THE  
UNITED STATES





## HELLO - NEIGHBOR

Please review and share this information with your family. These background facts and safety instructions will help you avoid potentially dangerous activity around the lines and guide you to proper actions if you see or suspect a problem.

## WHO IS SINCLAIR PIPELINE COMPANY

Sinclair Pipeline Company operates crude oil pipelines in Wyoming and refined petroleum pipelines in Wyoming, Colorado, Missouri and Iowa.

Sinclair operates a pipeline control center in Sinclair, Wyoming, which operates 24 hours a day, seven days a week. Technicians in the control center use computer technology to monitor flow and pressures along our lines. Sinclair also has aerial patrols performed on a regular basis. Operations and maintenance people are located at many points along our pipelines.

In the event of an emergency situation involving our pipelines, our field operators are fully prepared to respond. Our response personnel also coordinate their efforts with local police and fire departments and other emergency responders.

## INFORMATION YOU WILL WANT TO KNOW

Federal government statistics show that pipelines have a safety record unequaled by any other mode of transportation. We need your help, as our neighbor along the pipeline, to keep it that way.

It is unlikely that you would ever experience a leak, but should a leak occur, the information contained in this brochure will help you:

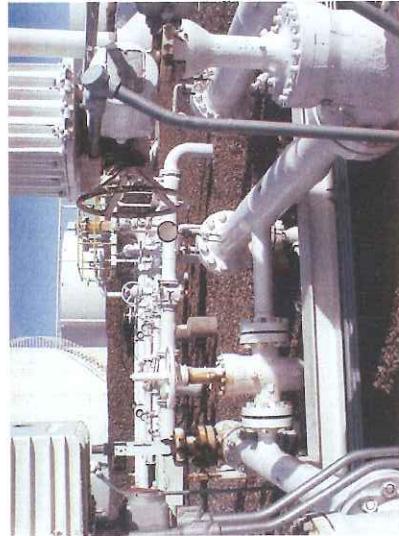
- Know how to recognize a leak
- Know what to do if you notice a leak
- Know how to immediately report a leak

By working together, we can keep our petroleum pipelines operating safely without any disturbances or inconveniences to our neighbors. If you have questions about this safety information or our operations in your area, please write us at the following address or call us during normal business hours:

Sinclair Pipeline Company  
Rocky Mountain District  
P.O. Box 185  
Sinclair, WY 82334  
307-324-2636

Sinclair Pipeline Company  
Mid-Continent District Office  
26036 Old Hwy 24  
Carrollton, MO 64633  
660-542-0206

Website: [www.sinclairoil.com](http://www.sinclairoil.com)



## WHY TRANSPORT PRODUCTS BY PIPELINE

Pipelines are by far the safest means of transporting crude oil and refined petroleum products. If it were not for underground pipelines, all petroleum products would need to be transported by truck, railcar, or barge at a greater risk to the public and the environment.

Pipelines are constructed of welded steel pipe and are coated and protected to reduce corrosion (rust). Pipelines are designed, tested, installed, and maintained to strict engineering codes, and are a durable, efficient means of gathering and transporting vital energy resources.

## HOW TO IDENTIFY OUR PIPELINES

Pipelines are buried for safety reasons. Since most pipelines are underground, pipeline markers like these are used to show their approximate location.

Sinclair has installed these pipeline markers at public road, rail and river crossing, and various other places along the pipeline's path. However, you should never assume the exact location of the line. Someone may have moved or removed the marker. It is a criminal offense to willfully deface, damage, remove, or destroy any pipeline sign, right-of-way marker.

Should you see one of these markers with another phone number listed, please don't hesitate to dial either number. A Sinclair representative will be happy to help.



## CALL BEFORE YOU DIG!

To protect pipelines, other underground utilities, the public and the environment, the states in which Sinclair operate have developed an excavation notification system known as "One Call". When you call 811, "One Call" notifies all subscribing facilities. The appropriate company will send a representative to the proposed excavation site to mark the location of the buried pipeline. **FREE of Charge to the caller.**



Know what's below.  
Call before you dig.

## REPORTING AN INCIDENT

All scrapes or dents to a pipeline must be inspected. If not properly repaired, such damage could result in a future leak or serious accident. Regardless of how minor the damage appears, don't cover it up! Call the pipeline operator. We are also very much concerned over any condition or danger that could threaten the pipeline. If you become aware of such an incident or a potential incident, please call us immediately!



Name \_\_\_\_\_

Address \_\_\_\_\_

City \_\_\_\_\_

State \_\_\_\_\_

Telephone \_\_\_\_\_

Comments \_\_\_\_\_

## 24-Hour Emergency - (800) 321-3994

## NATIONAL PIPELINE MAPPING SYSTEM

For information about pipelines operating in your area, you may contact the National Pipeline Mapping System (NPMS). This database of pipeline operators and the location of their lines was designed for the public to have access to contact information for pipeline companies operating in your area. Visit [www.npms.phmsa.dot.gov](http://www.npms.phmsa.dot.gov) for more information.

## Non-English Speaking Public Awareness Material

Federal regulations require that pipeline operators offer public awareness material in languages other than English whenever there is a significant population of non-English speaking stakeholders. If other languages are required in your area, contact our Public Awareness Administrator at 1-307-328-3553.

## Material de Conocimiento Publico para Quienes no Hablan Ingles

Regulaciones federales requieren que operadores de tubería ofrezcan al público material de conocimiento en otros idiomas, que no sean en inglés cuando hay una población significativa que no habla inglés. Si otros idiomas se requieren en su área, póngase en contacto con nuestro Departamento de Información Publico al número 1-307-328-3553.

# REGIST \$20

Are you aware of Sinclair's pipeline n

Did you know that liquid petroleum pr  
shipped in this pipeline  Yes |

Do you know what to do if you discov

### HERE'S HOW TO E

the attached postage pa  
entered into a drawing.  
winner. The winning inc  
contest will begin on Ma  
9, 2007. To be eligi  
November 26, 2007. Th  
2007 at approximately 2  
on the total number of ca  
be distributed to the fi  
Kansas, Missouri and W

Prize Value: Each priz  
offered to legal residen  
years of age, and who r  
This offer is void where  
presentation or purchas



SINCLAIR INSTALLING  
10" PIPELINE  
IN 2007

LARSON  
PROPERTY

LARSON  
PROPERTY

6" PIPELINE  
INSTALLED IN 1963  
HOUSE BASEMENT INSTALLED  
HOUSE 24' FROM PIPELINE.

6" PIPELINE INSTALLED 2007  
AFTER HOUSES BUILT

85' EASEMENT FOR  
PIPELINES BUT  
PIPELINES ARE ALONG  
EDGES AND NOT  
CENTERED

10" PIPELINE  
INSTALLED  
AFTER HOUSES BUILT

10'

10'

