

B

Flood Impacts to Drinking Water & Wastewater Infrastructure

Preliminary Damage Assessment Team Site Visits

- 1. Upper Thompson Sanitation District**
 - 2. Town of Estes**
 - 3. Estes Sanitation District**
 - 4. Boulder**
 - 5. Lyons**
 - 6. Longmont**
 - 7. Loveland**
 - 8. Berthoud**
 - 9. Lefthand Water District**
 - 10. Nederland**
 - 11. Ward**
 - 12. Jamestown**
 - 13. Spring Valley Mutual Water Association**
 - 14. Denver Water Board**
 - 15. Central Weld County Water District**
 - 16. Lefthand Water and Sanitation District**
 - 17. Evergreen Metro District**
 - 18. Metro Wastewater Reclamation District**
 - 19. Morgan County Quality Water District**
 - 20. The Aspen Lodge at Estes Park**
 - 21. St Vrain Sanitation District**
 - 22. Sterling**
- Other Potential Targets:**
- a. Idaho Springs**
 - b. Pinewood Springs**
 - c. Greeley**
 - d. Evans**
 - e. Milliken**
 - f. Big Elk Meadows**



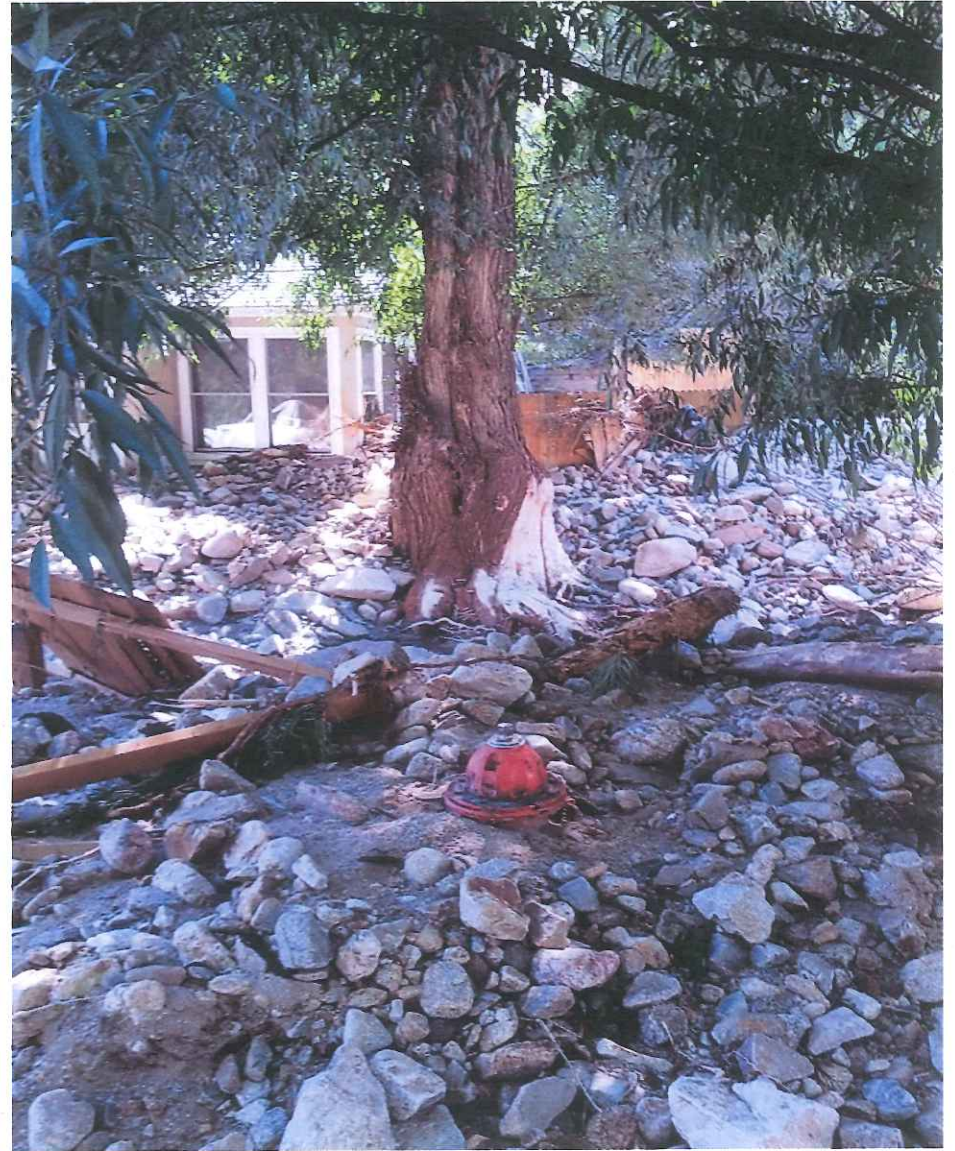
Estes Park



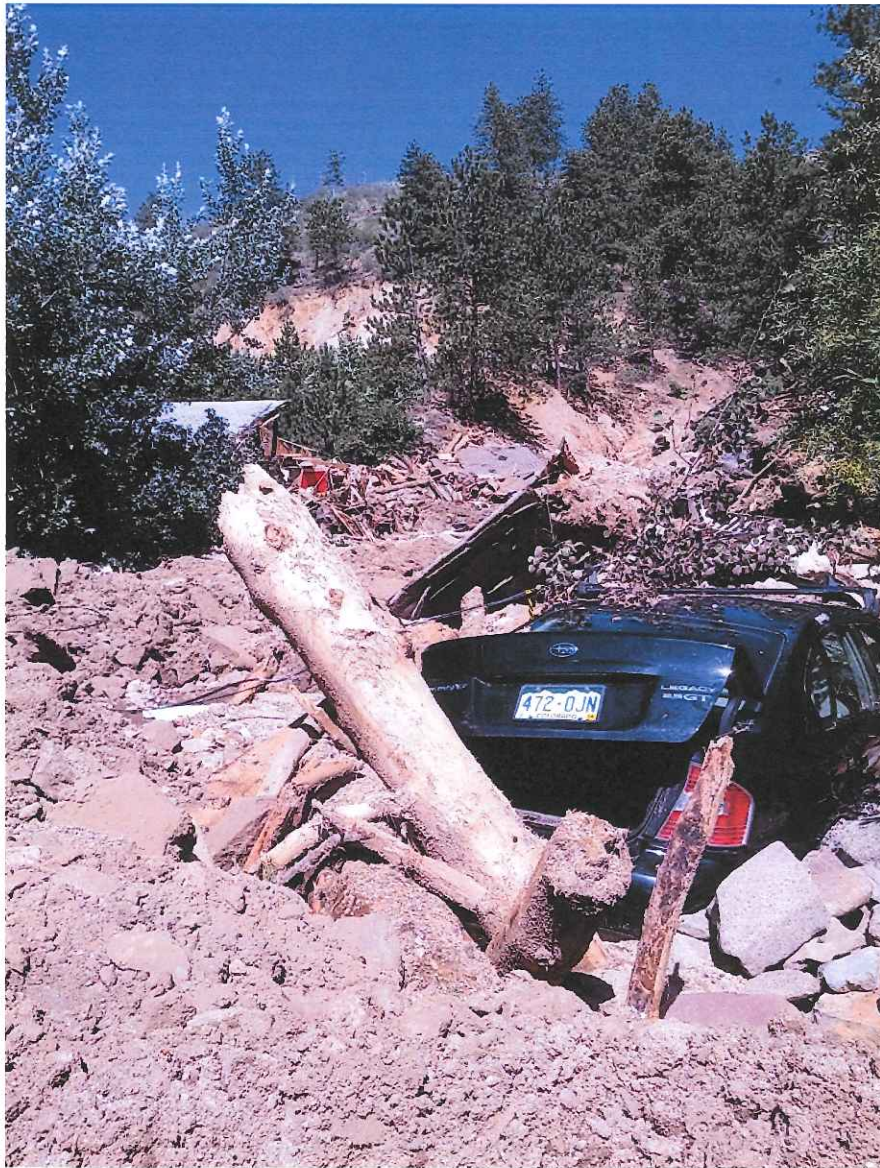
Estes Park



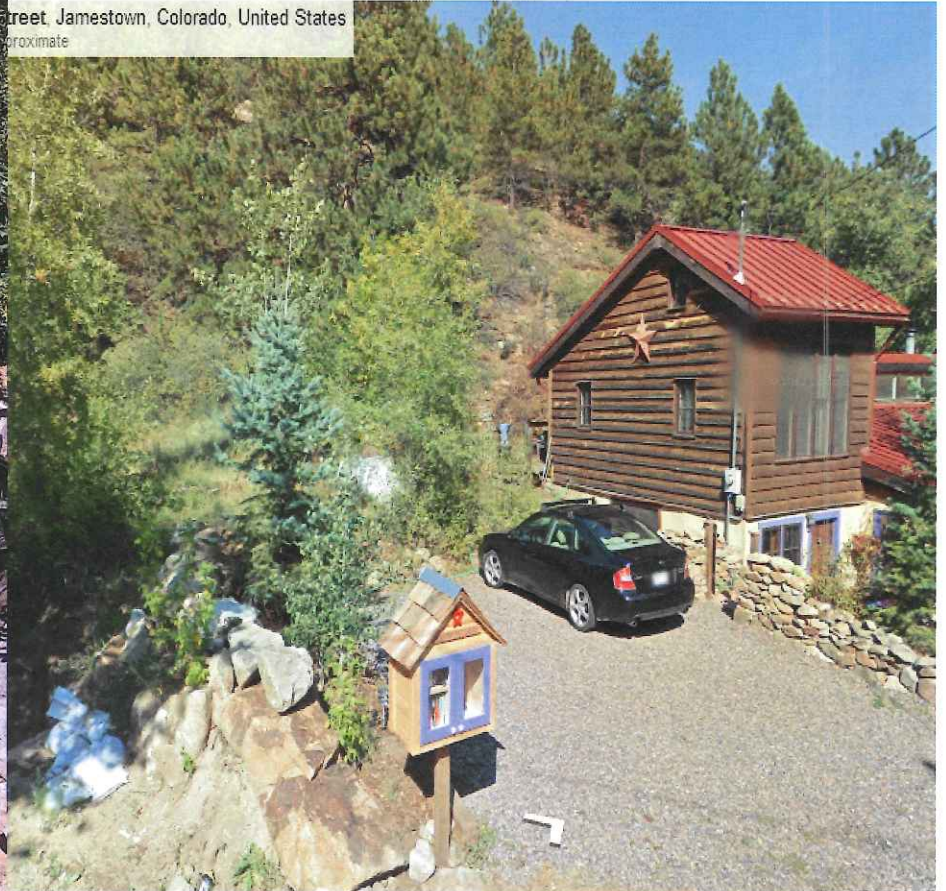
Jamestown - Stream Channel Change in Red



Jamestown



Street, Jamestown, Colorado, United States
Approximate



Jamestown – Before & After



Town of Lyons WWTP



Lyons – WWTP & Exposed Drinking Water Line



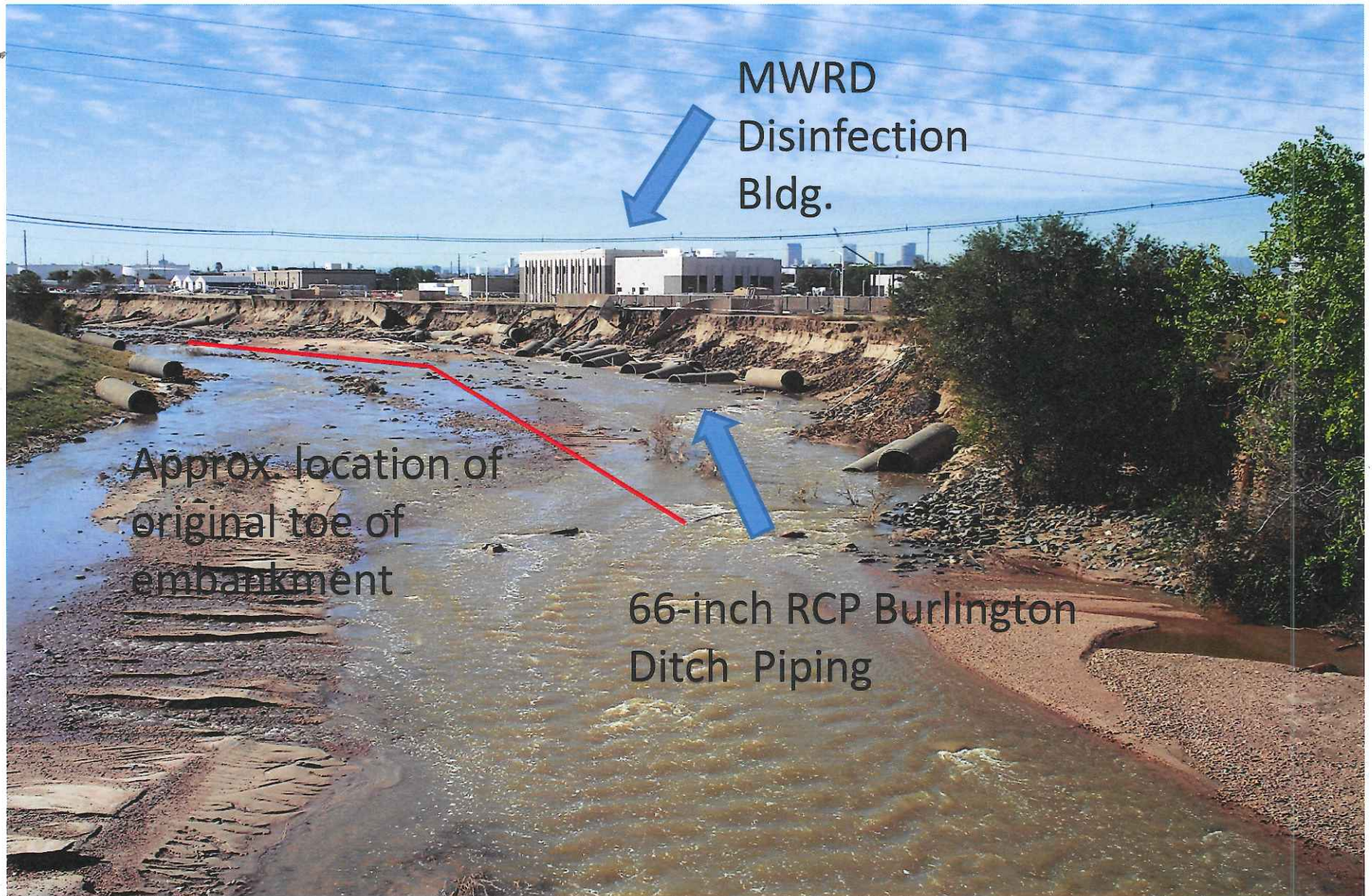
Loveland - Drinking Water Line Exposed



Loveland – Propane Tanks Left by Floods



Metro Wastewater Reclamation District – Hite WWTP



Sand Creek near MWRD Hite WWTP