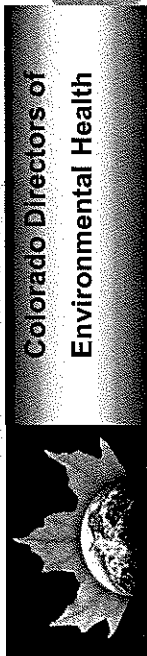


Environmental Health in Colorado

Tom Gonzales, MPH, REHS
President, Colorado Directors of Environmental Health
Tom Buffs, MSc, REHS
EH Directors representative to CALPHO



Colorado Directors of Environmental Health

Environmental Health Protects Against Adverse Impacts

- ⊙ Protection against environmental factors that may:
 - > Adversely impact human health
 - > Adversely impact ecological balances essential to long-term human health and environment

National Environmental Health Association, April 1996

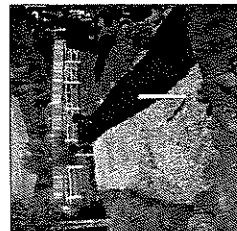
National Essential Services Guide Work

- ⊙ Monitor environmental and health status
- ⊙ Diagnose and investigate hazards
- ⊙ Inform, educate and empower people
- ⊙ Mobilize partnerships
- ⊙ Develop policies to support efforts
- ⊙ Enforce laws to protect environmental public health
- ⊙ Link people to services
- ⊙ Assure competency of workforce
- ⊙ Evaluate services (effectiveness, accessibility, quality)
- ⊙ Conduct research for new insights and innovation

2.5

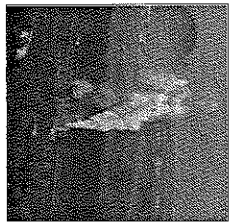
Environmental Health Services are Provided Locally

- ⊙ Retail food safety inspection, licensing, recalls and training
- ⊙ Water quality
 - > Issuing septic system permits
- ⊙ Childcare center inspections
- ⊙ Monitoring and investigation of Plague, Tularemia, Rabies, West Nile Virus, and Hantavirus



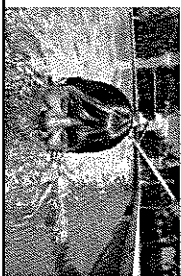
Expanded Local Environmental Health Services

- ⊙ Air quality complaint investigation, inspection, and education
- ⊙ Emergency preparedness
 - > HAZMAT response
 - > Outbreak response
- ⊙ Occupational health
- ⊙ Indoor air quality investigations
 - > Testing and education (mold, radon, lead)



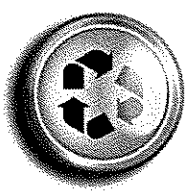
Expanded Local Environmental Health Services

- ⊙ Integrating Land Use and Health
 - > Planning for a built environment
- ⊙ Transportation planning
- ⊙ Swimming Pools/Spas
- ⊙ Meth lab investigation and clean-up oversight



Expanded Local Environmental Health Services

- ⊙ Confined animal feeding operations
- ⊙ Water quality
 - > Ground, surface, and storm water
- ⊙ Landfills and waste cleanups
- ⊙ Developing climate change policies and strategies
- ⊙ Pollution prevention
- ⊙ Body art inspection and training



Environmental Public Health Challenges

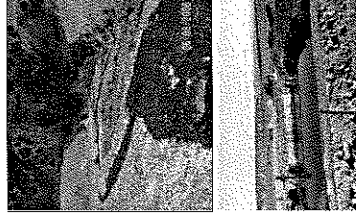
- ⊙ Farmers Market Working Group Colorado Department of Agriculture
- ⊙ Uranium extraction
 - > Western Slope – mining and milling
 - > Eastern Slope – solution extraction
- ⊙ Colorado Radionuclide Abatement and Disposal Strategy (CO-RADS)
- ⊙ Rabies - Skunk
- ⊙ Biomass to energy



Environmental Health Leadership Needed to Address Challenges

- Encourage:
- Evaluation of current level of services in county
 - Environmental public health leadership
 - Collaboration to develop enhanced public health systems statewide

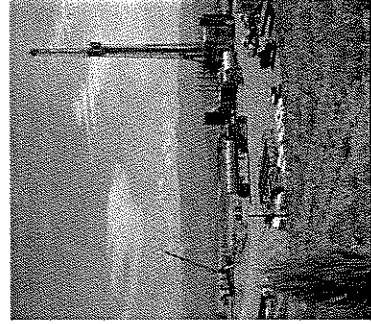
Environmental Health & Oil and Gas Development



- Updated Oil and Gas Conservation Commission Regulations and fracking fluid disclosures are recognized improvements
- Over 47,000 active wells
 - > Widely distributed around the state
 - > In 2/3 of counties (42 of 63)
 - > 30% (19 of 63) have at least 200 wells

Oil and Gas Development Air Quality

- Local role varies by jurisdiction
- Uncertainty about emission and health impacts
- Community concerns
 - > Diesel emissions
 - > Well development emissions
 - > Flaring
 - > Fugitive dust
 - > Roads/traffic
 - > Compressors & associated equipment

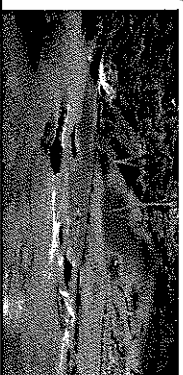


Oil and Gas Development Water and other Impacts

- Groundwater protection
 - Separation distances wellhead to homes/water sources
 - Water use / reuse
 - Storm water management
 - Spills / Waste management
 - Land use compatibility concerns
 - e.g. Industrial, Urban and Rural issues
- Citizens expect local government to protect them

Water and Wastewater

- ⊙ Updated Onsite Wastewater Treatment System statute
 - › HB12-1126
- ⊙ Updated Onsite Wastewater Treatment System Regulations - CDPHE
- ⊙ Alternate wastewater management options
 - › Innovative technology
 - › Graywater



Act Requires Planning

- ⊙ All counties form local public health agency, governed by a local board of health
- ⊙ Develop statewide improvement plan every 5 years
 - › Local public health agencies develop local plans
- ⊙ State Board of Health establishes:
 - › Minimum Director qualifications
 - › Core services –Adopted October 2011
 - › Standards
 - › Funding formula

Public Health Improvement Senate Bill 08-194

- ⊙ Create consistent infrastructure to provide essential public health services
- ⊙ Focus on improving local and district public health agencies
- ⊙ Share responsibilities
 - › State
 - › Local public health agencies
 - › Boards of health
 - › System partners

Planning Includes Assessment

- | | |
|---|---|
| <p>Community Health Assessment</p> <ul style="list-style-type: none"> • Health status and why • Community Resources • Health Priorities | <p>Capacity Assessment</p> <ul style="list-style-type: none"> • Ability to do Core Services • Staffing and Funding • Improvements |
|---|---|



Local Public Health Improvement Plans



In 5 Years: A Comprehensive Statewide Plan

Partners Assist with Environmental Health Work

- ⊙ Environmental Health Specialists
- ⊙ Public Health Nurses
- ⊙ Public Works Employees
- ⊙ Building Inspectors
- ⊙ Land Use Planners
- ⊙ HazMat Teams
- ⊙ Fire Departments
- ⊙ Local Emergency Planning Commissions
- ⊙ Universities / Colleges
- ⊙ Water/Wastewater Treatment Plant Operators
- ⊙ Soil Conservation Districts
- ⊙ Watershed Groups
- ⊙ Transit Authorities
- ⊙ Housing Authorities
- ⊙ Extension Agents
- ⊙ State and Federal Government
- ⊙ Industry Associations
- ⊙ Citizens

Colorado Directors of Environmental Health

- Tom Gonzales, MPH, REHS
Director Environmental Health Division
El Paso County Public Health
- Tom Butts, MSc, REHS
Director, Environmental Health Division
Tri-County Health Department
- ⊙ Resource list of phone numbers, addresses and e-mails