

Joint Agriculture Committee Briefing *(continuation)* February 1, 2012

Christopher E. Urbina MD MPH, Executive Directory and Chief Medical Officer
Steven H. Gunderson, Director, Water Quality Control Division
Colorado Dept. Public Health and Environment

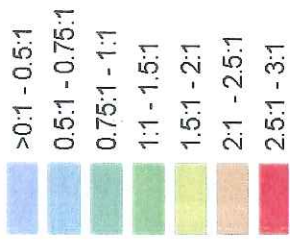
Water Quality Control Commission Hearing

- ▶ Rulemaking
Scheduled for
March 12 -14,
2012
- ▶ 90 parties,
representing more
than 150 entities

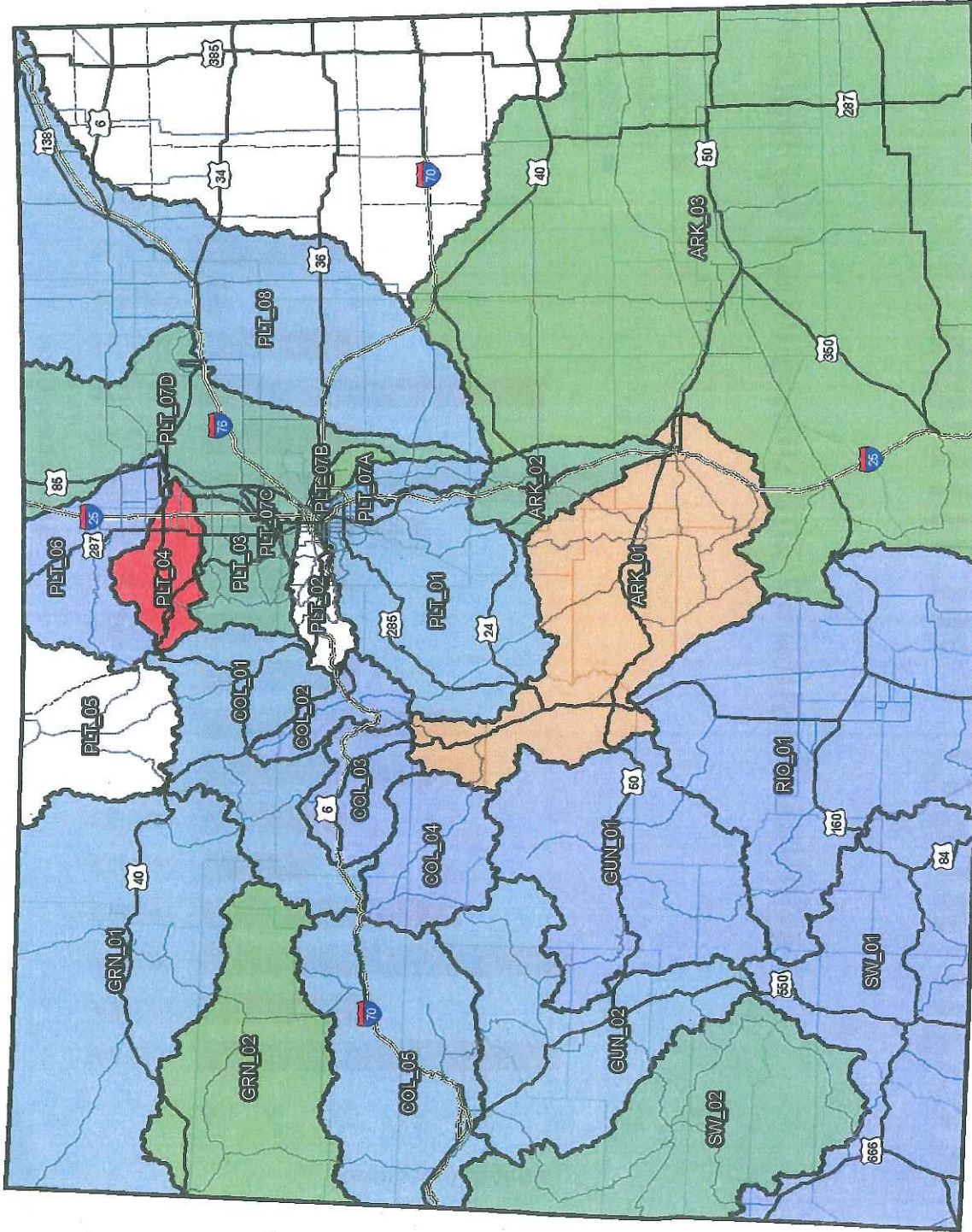
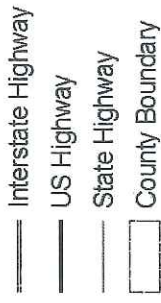


South Platte River at Ovid

Range of Tier 1 Benefit-Cost Ratios



Roads



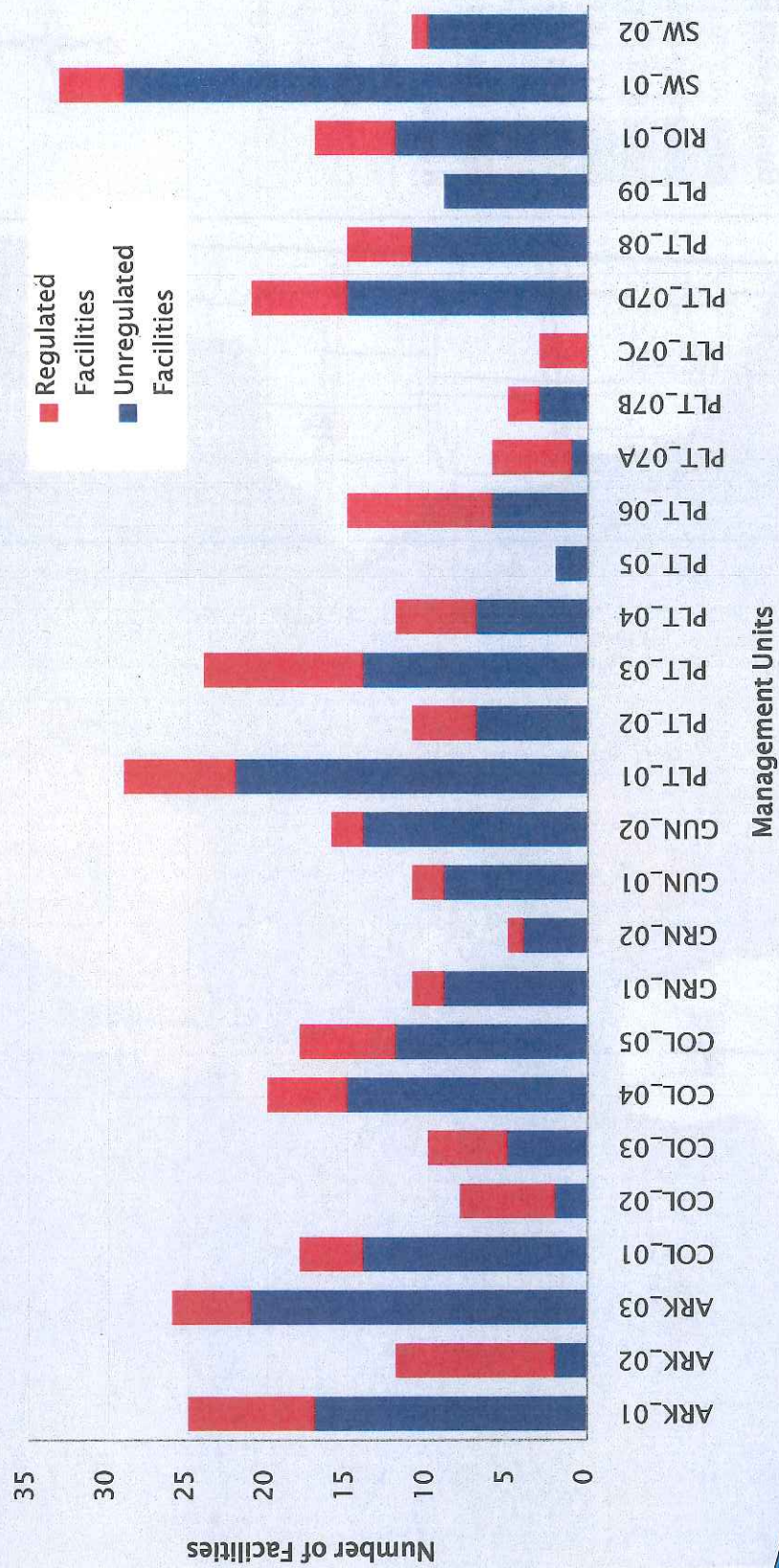
Colorado Nutrient Cost/Benefit Study

Figure 1-5



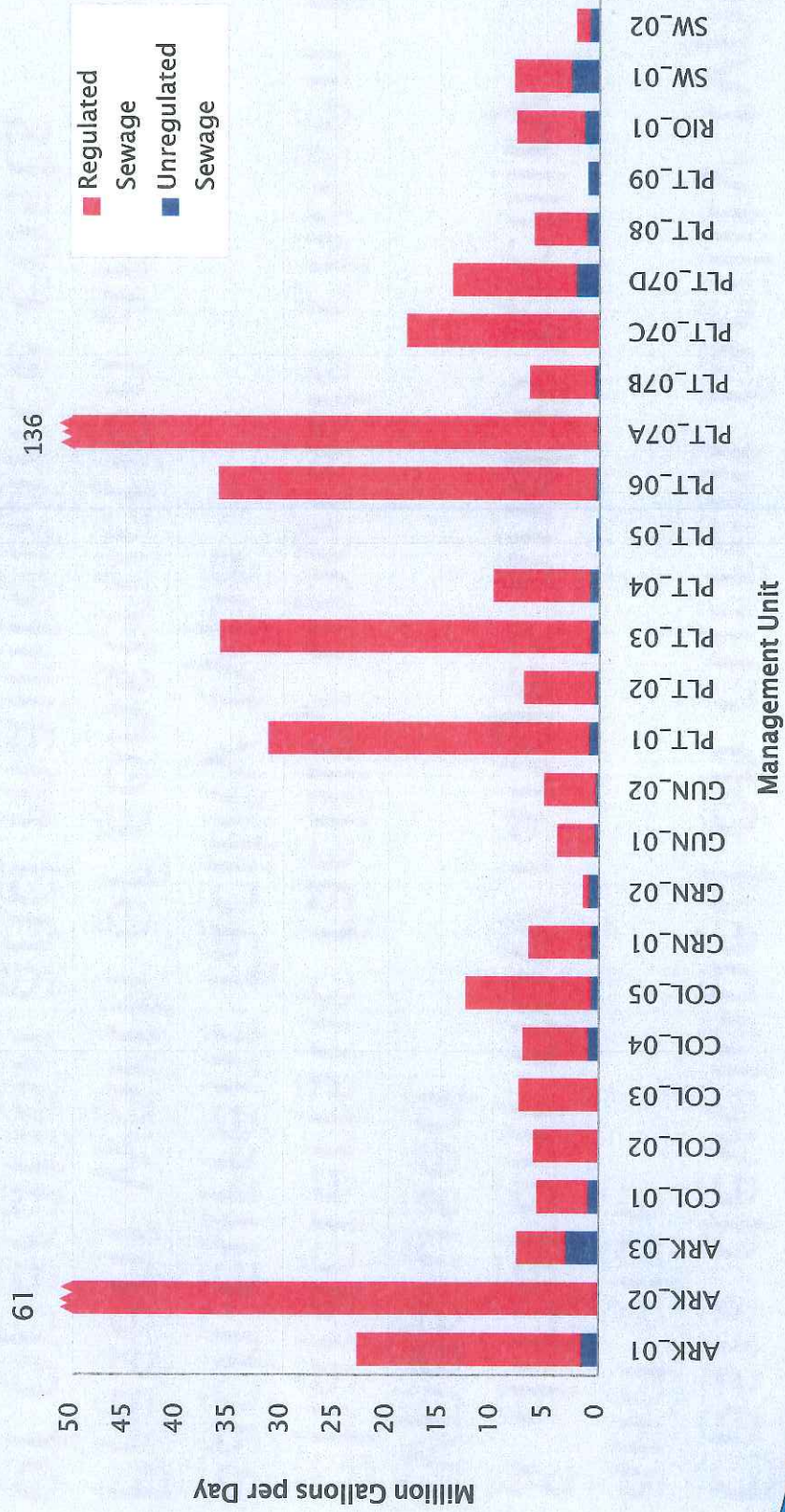
Regulated Facilities

Facilities: Regulated and Unregulated for Nutrients



Regulated Effluent

Sewage: Regulated and Unregulated for Nutrients



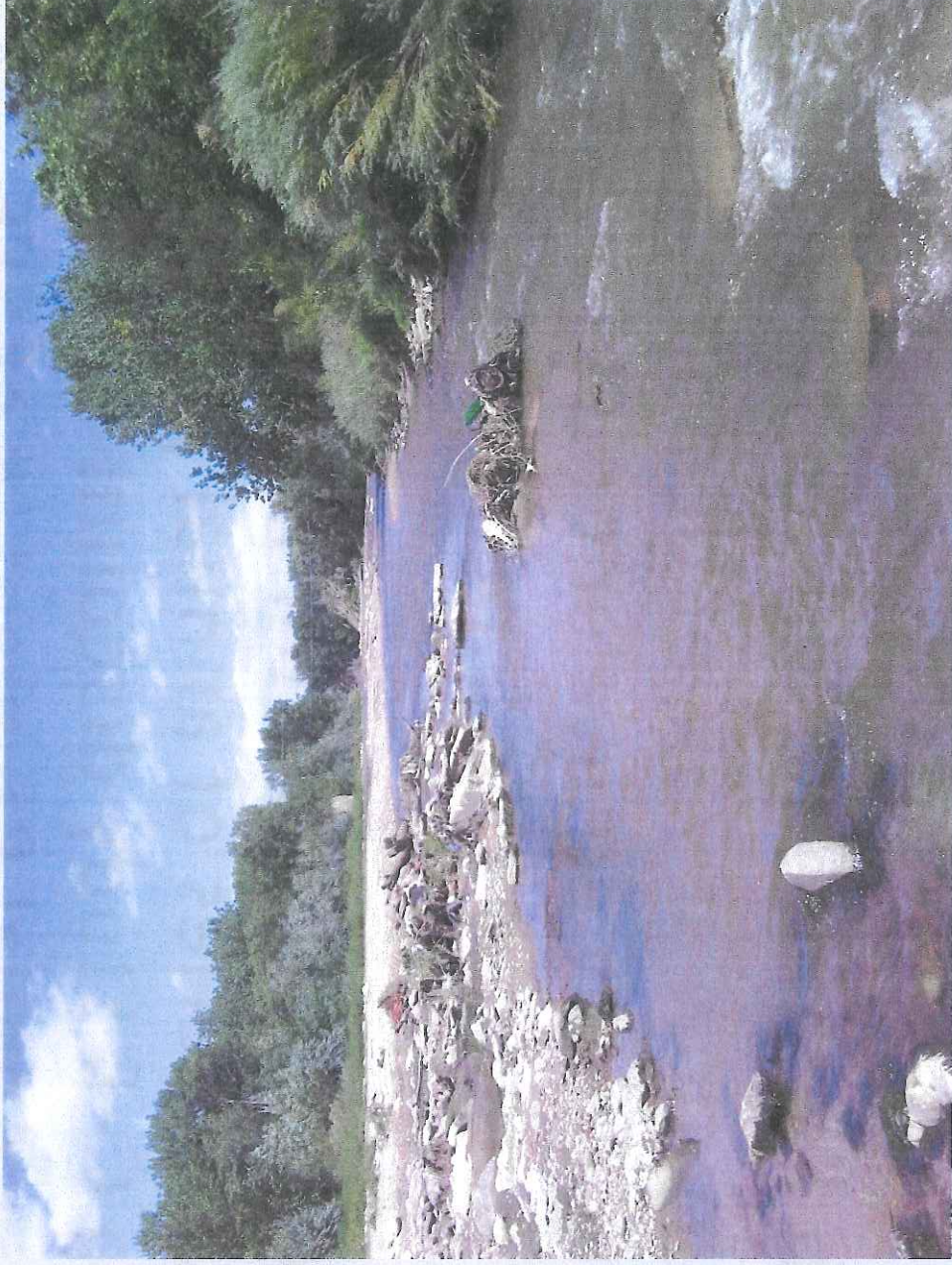
Cost Per Facility

- ▶ Costs developed on current facility type and size
- ▶ 5 different flow ranges and 6 facility types used
- ▶ Characteristic facility upgrade chosen for each current facility type
- ▶ Present worth of construction and 20 yrs of operation and maintenance costs
- ▶ Facility-specific cost estimates will be different (more accurate)

Cost Per Household (CPH)

- ▶ Rough Estimate Based on Assumptions
 - Facility flow at 75% of design capacity (DC)
 - Single family equivalent (SFE) = 75 gal./person and 2.5 people per household (187.5 gal./SFE)
 - Present worth cost for facility converted to a 20-year series of annual payments (AP) using C-B Study discount rate
 - $CPH = \text{Annual Payment} / \# \text{ of SFE}$
 - $(AP / 0.75 \times DC \text{ (gal.)}) / 187.5 \text{ gal./SFE}$

Questions



Fountain Creek nr. Fountain

MU Name

MU

ARK_01	Upper Arkansas River
ARK_02	Fountain Creek
ARK_03	Lower Arkansas River
COL_01	Colorado River Headwaters
COL_02	Blue River
COL_03	Eagle River
COL_04	Roaring Fork
COL_05	Lower Colorado River
GRN_01	Yampa River
GRN_02	White River
GUN_01	Upper Gunnison River
GUN_02	Lower Gunnison River
PLT_01	Upper South Platte River
PLT_02	Clear Creek
PLT_03	St Vrain River
PLT_04	Big Thompson River
PLT_05	North Platte River
PLT_06	Cache La Poudre River
PLT_07A	Cherry Creek
PLT_07B	Sand Creek
PLT_07C	Big Dry Creek
PLT_07D	Middle South Platte River
PLT_08	Lower South Platte River
PLT_09	Republican River
RIO_01	Rio Grande River
SW_01	San Juan and Animas Rivers
SW_02	San Miguel and Dolores Rivers