

Colorado State Capitol Dome Exterior Restoration Project

May 3, 2012



Photo 07.7: Cracked angle



Photo 07.6: Cleaning of soffit below upper terrace

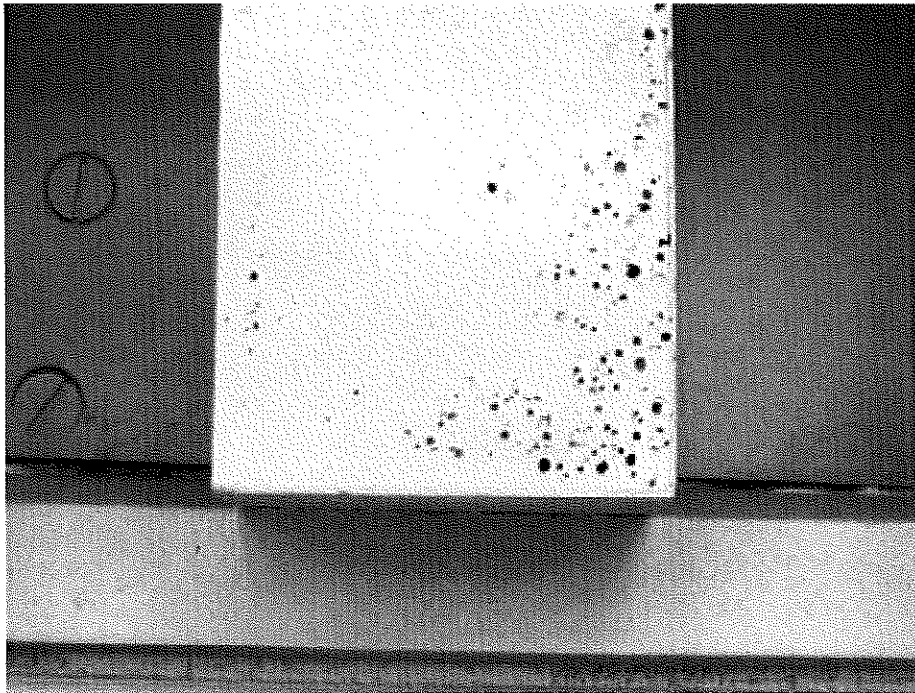


Photo 07.3a: Porosity on cast iron

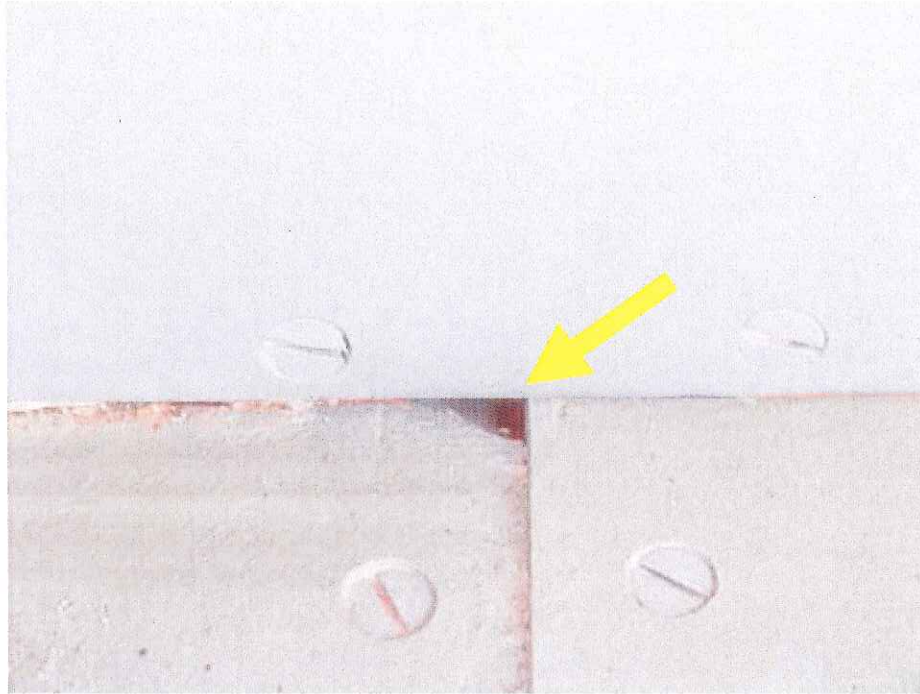


Photo 07.3b: Chipped corner on cast iron



Photo 07.3c: Crack in piece LD-E-10



Photo 09.2: Disconnected hanger at grid line C



Photo 1.9: Installed window protection – observation deck.



Photo 1.6a: Gutter profile pulling away from vertical plate.



Photo 1.6b: Fibrous strip backing behind gutter.



Photo 1.6c: Material loss in vertical plate behind gutter.



Photo 1.7a: Removed column capital.



Photo 09.3: Broken bolt to capital on outer column on grid line E

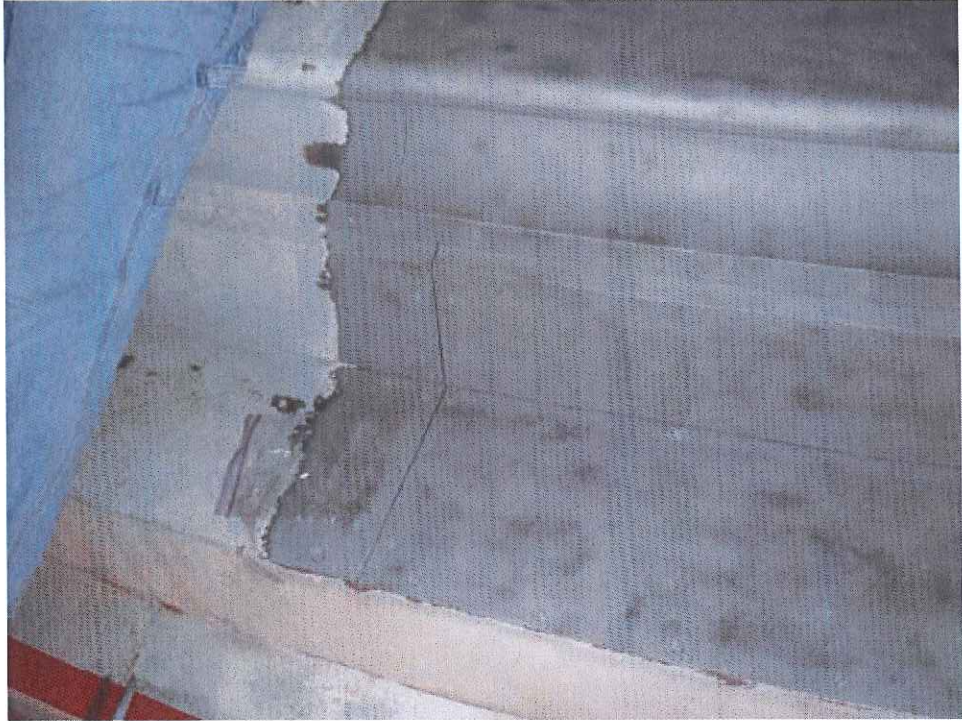


Photo 1.3a: Coatings removal mock-up.



Photo 1.3b: Coatings removal mock-up.



Photo 1.2: Installed radial scaffolding support beams.



Photo 1.4: Prime coat mock-up.

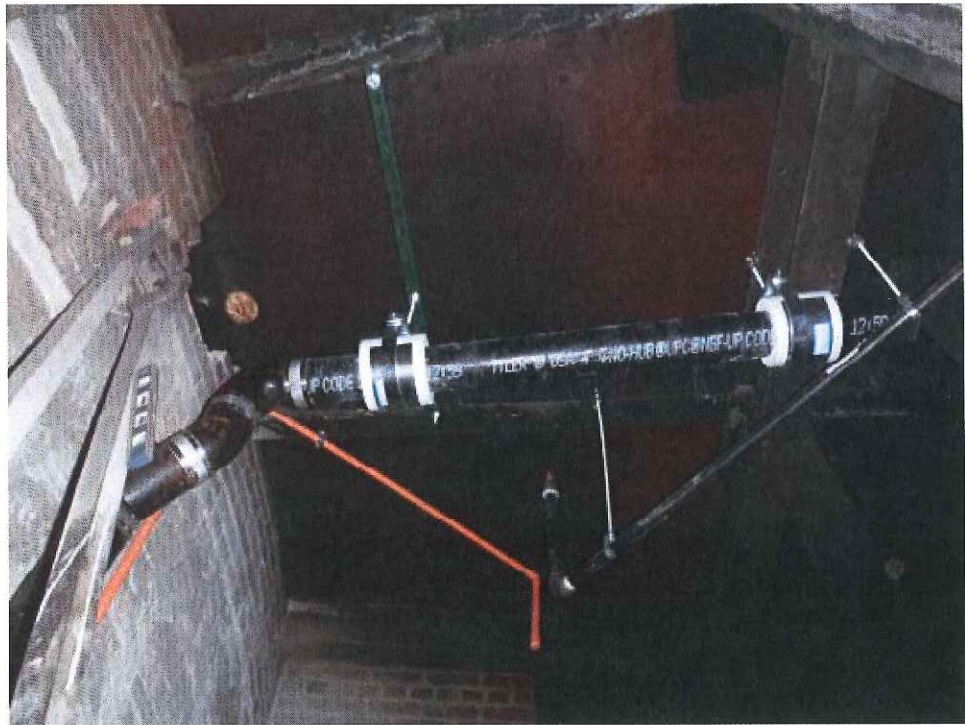


Photo 1.8: Newly installed rainleader.







Colorado State Capitol Dome Exterior Restoration Cash Flow/Funding

(updated 5/2/2012)

