



Jefferson Park United Neighbors
2001 Eliot Street
Denver, Colorado 80211
www.jpun.org

July 24, 2011

The Honorable Mario Carrera
Chairman
Colorado Reapportionment Commission
1313 Sherman St., #122
Denver, CO 80203

Re: Jefferson Park, Denver

Chairman Carrera:

On behalf of the JPUN Board I want to thank you and the other members of Commission for your service to the People of the State of Colorado.

The Commission recently granted provisional approval to a House redistricting plan that adversely affects the Jefferson Park neighborhood in North Denver.

Jefferson Park is bounded by Speer Boulevard, Federal, Colfax and I-25 with about 1,200 residents in both single family and multi-family residences, both owner occupied and rental. The most prominent landmark is Invesco Field at Mile High, a football stadium. Jefferson Park's been recognized as a distinct neighborhood since before Denver became a City and County. Additional landmarks include our eponymous park, Jefferson Park, Children's Museum and the Riverside Baptist Church. We are proud of our neighborhood's diverse culture and strategic and affordable infill growth.

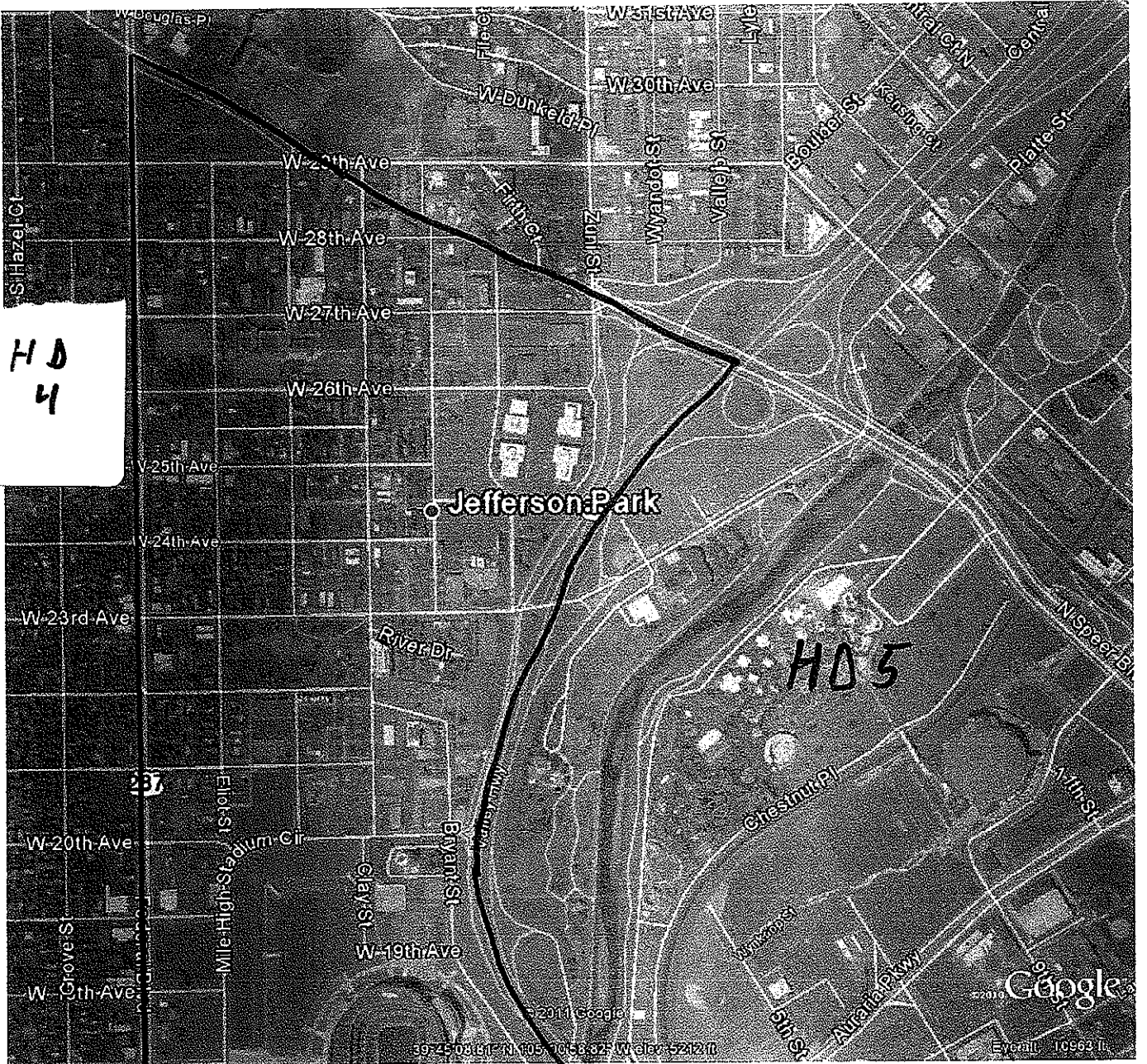
Historically, Jefferson Park has been treated as a single community of interest for re-districting purposes. For the past several re-districting cycles it has been in HD 5, a central Denver district that includes downtown and the lower Highlands.

The provisional plan proposes splitting Jefferson Park diagonally between HD 5 to the east and HD 4 to the west. This adversely impacts the residents of Jefferson Park, reducing resident's ability to identify a State Representative and diminishing already low voter turnout.

We request the Commission keep Jefferson Park intact and prefer remaining in HD 5. At a meeting July 23, 2011 the Board so resolved by a vote of 7 - 0 and instructed me to convey this resolution to you.

Thank you in advance for your careful consideration of our request. If you need any additional information please do not hesitate to contact me.

Michael Guietz Co-President
Zoid4@comcast.net
719-210-9643



W. Colfax

Preliminary Approved Plan

Redistricting in Longmont

Bob & Kathleen Norris

to:

reapp2011

07/18/2011 07:13 AM

Cc:

jfryar

Show Details

My name is Bob Norris. I have served on a number of non-profit boards as well as City of Longmont boards

I am strongly in favor of retaining Districts 11 and 12 as they are with some modifications.

The current borders have benefited minorities/people of color. I would not like to see this change.

We have significantly benefited from having representatives from these two districts serve on several committees and provide us with at least two votes on issues that are particularly important to our community.

Many of us have as much or more in common with the citizens of Lafayette while others may have more in common with citizens of Louisville or Boulder than we do with some living in Longmont.

There was a court case in 2002 reviewing the previous reapportionment and they made the point that "nubs" of population don't receive fair representation. This ruling was made with a specific mention of Longmont and the republicans desire to cut off just enough of Longmont to reach the population threshold.

longmont rep
patricia brasga-radovich
to:
reapp2011
07/18/2011 07:48 AM
Show Details

we wanted you to know that we are strongly in favor of H6001v1 and H6003v1. longmont population is close to 90,000 and deserves its own rep. thank you.

Carpe Diem
try to be a better person than you were yesterday

as a registered voter from Grand County

Autumn

to:

reapp2011@state.co.us

07/18/2011 09:46 AM

Show Details

I am very strongly opposed to reapportionment that would remove Grand County from Dist 57. I cannot see that there are common concerns with a town like Granby and a place like Boulder. I cannot see anything other than political considerations at work here.

Respectfully,

Autumn Daniels

PO BOX 1074

Granby, CO

We do not belong in same district as Boulder

Mark Bishop

to:

reapp2011@state.co.us

07/18/2011 09:48 AM

[Show Details](#)

Mark Bishop

MB Commodities, Inc.

mb@mbcommodities.com

(970) 887-9877

Reapportionment of Grand and Jackson Counties

MartyTod

to:

reapp2011

07/18/2011 10:22 AM

Show Details

Dear Committee for Reapportionment,

I urge you to reconsider moving Grand and Jackson Counties to a district on the front range. I live in Grand County, and feel that there is no connection between our counties and the Front Range, except that we pipe our water through the divide to the front range, and many tourists come visit us from the front range. Likewise, we come to the front range to shop and for some medical care. Our needs and politics are completely different. Road access between our counties and the new district is very limited, especially in the winter. This new division makes no sense. Please reconsider.

Thank you, Marty Tod
Tabernash, CO

reapportionment
cherrielarry
to:
reapp2011
07/18/2011 10:53 AM
Show Details

Grand and Jackson Counties are in no way related to front range counties, their issues, budgets, political leanings or lifestyles. Please keep our mountain counties in the mountains.

Thank You

Larry Campbell
289 Blue Jay
Tabernash

Grand County Inclusion with Larimer County

Paul S. Lewis

to:

reapp2011

07/18/2011 11:04 AM

Show Details

Dear Reapportionment Commissioners

As a resident, citizen and voter in Grand County, I am writing to you in strong protest to the proposed formation of a Grand-Larimer District.

It just does not make any sense to include Grand County with Larimer County. We have virtually nothing in common, other than both being located in Colorado. Indeed, Grand County is a Western Slope County with clear positions on many issues that are clearly different if not directly in conflict with those of Eastern Slope Larimer County. This union makes no more sense than a Denver-Grand Junction or Colorado Springs-Durango District.

If your intention is to disenfranchise the people of Grand County for another ten years, creating a Grand-Larimer District is the way to do it.

Paul Lewis

PO Box 3332

Winter Park, CO 80482

plewis@pobox.com

GRETCHEN CERVENY
FORMER MAYOR OF WHEAT RIDGE
3425 Moore St
Wheat Ridge, CO 80033
303.233.1506
gretchen.cerveney@yahoo.com

TO: Members of the Reapportionment Commission

DATE: July 18, 2011

FROM: Gretchen Cerveney

As former mayor of the City of Wheat Ridge, I am asking you to please keep all of the citizens of Wheat Ridge in only **one** House District and **one** Senate District.

Citizens are working hard to revitalize Wheat Ridge. Dividing Wheat Ridge into two different House districts would hurt that effort.

Wheat Ridge is a very old community.

There has been a Wheat Ridge School on 38th & High Ct. since 1896

The Wheat Ridge Post Office was established in 1913

The city was incorporated in 1969 because citizens did not want to be part of Denver.

I realize that the Commission usually considers party affiliation when forming House and Senate districts. Wheat Ridge now is pretty evenly split between Democrats, Republicans and independents..

Please do NOT divide the City of Wheat Ridge when drawing House and Senate district boundaries.

Thank you for your consideration

Redistricting - H6001v1 & S6003v1

Barbara Koelzer

to:

reapp2011

07/18/2011 01:39 PM

Show Details

Dear Reapportionment Committee,

I am writing to express my support for the proposals to create districts in the House and the Senate which would make Longmont whole for the first time in many years. These proposed maps also make sense because they would create balanced, competitive districts: S6003v1 would create a Senate district (new SD17) out of Longmont & the Firestone/Frederick/etc portion of Weld County with good political balance: 33% R, 33% D, and 33% U. H6001v1 also makes a very competitive House District (new HD11), with a much smaller bite out of downtown/Old Town Longmont.

Please support H6001v1 & S6003v1.

Sincerely,

Barbara Koelzer

Grand and Jackson Counties- Reapportionment

John & Nancy Rice

to:

reapp2011

07/18/2011 03:16 PM

Show Details

Dear Sir:

I wish to state my opposition to reapportionment that would combine those of us in the West Slope (in my case Grand County) with counties in the Front Range. I would like to urge all of you to allow all of us in Grand and Jackson counties to remain in House District 57.

Thank you.

Signed

John H. Rice

2309 County Road 372

Parshall, CO 80468

reapportionment of Grand County

Bette Hughes

to:

reapp2011

07/18/2011 03:36 PM

Show Details

I strongly object to the reapportionment proposal to include Grand County in a Front Range district. We are very unlike the population on the Front Range and should not be considered part of that (those) district(s).

Bette Hughes

2113 Lions Lane

Tabernash CO 80478

I would like to receive Committee updates!

RonRoesener

to:

reapp2011

07/18/2011 03:56 PM

Show Details

I would like the Western Slope to remain whole and separate from Eastern Slope counties. There is nothing we have in common with counties like Larimer and Boulder. It makes no sense for a Senator or Representative to have Jackson and Grand County in their voting base when they are not easily reached twelve months of the year. Especially from Ft. Collins.

Which of you would drive over four hours one way or even more to reach Grand County or Jackson County at the risk of not getting back to the East Slope for at least two days because of winter driving conditions? Do you really think we believe you would? We do not?

Therefore, please leave these counties in the hands of those who know them. In the hands of people who would really represent them and understand their ways of life and making a living.

Thank you,

Ron Roesener
22 Cedar CT
Battlement Mesa, Colorado 81635
(970) 285-9380

I would like to receive Committee updates!

RonRoesener

to:

reapp2011

07/18/2011 04:02 PM

Show Details

It is very important to me that western slope counties remain a part of the western slope. They do not have anything in common with counties on the east side of the Continental Divide. Those who want Jackson, Moffatt and Summit Counties do so only to bolster their voting base and make it easier to change the flow of water.

Does it make sense to you, to have a Representative or Senator in Ft. Collins drive up to four hours one way in the winter months to visit Grand and Jackson Counties? Which one of you would really do it in Colorado weather? Would those counties really be served in our best interest?

Ron Roesener
22 Cedar CT
Battlement Mesa, Colorado 81635
(970) 285-9380



Note

baumgardner3 to: reapp2011
Please respond to baumgardner3

07/18/2011 06:04 PM

Hi I am a Grand County resident and was proud to be a Republican. As I read about being lumped in with Larmer and or boulder I am loosing faith in the leadership at the capital. We here in Grand have nothing to do with these counties as far as agriculture .

We have many ranches in Grand and Jackson. Where are the similarities in Boulder in that respect?

Will we have any representation? Maybe like our current senator who I have never seen or everyone I know has never seen. Her attention is on the Denver side of the state not with her entire district. If you are considering putting Grand back in the Senate district why remove it from the representative district.

Aren't we supposed to be in districts with similar values? We are not a college town or liberal. Although we have to tolerate the few that do choose to live here.

Please do not remove us from district 57

LB

Sent from my Verizon Wireless BlackBerry

District 11

diward

to:

reapp2011

07/18/2011 06:19 PM

Show Details

I'm writing in support of H6001v1 and S6003v1 giving Longmont a cohesive House District 11. I'm a 44 year resident of Colorado and 42 year resident of Longmont.

Thanks, Doug Ward



Reapportionment
Charlie Bouchard to: reapp2011@state.co.us

07/18/2011 09:13 PM

Grand and Jackson counties share little in common with front range districts and the needs of the counties will not be represented through reapportionment.

Charles Bouchard
Tabernash, CO

Sent from my iPad

House redistricting and its affect on Grand County

Ted Kaplysh

to:

Ryan Call, Colorado GOP, Colorado Redistricting Commission

07/19/2011 08:21 AM

Cc:

Alan Olson

Show Details

Al Olson shared with me his email to you and your response to him. Al asked you for *"the reasoning behind the proposed changes"* and for *"an explanation"*.

Your response that the task of redistricting is a *"difficult challenge"* and that the citizens of Grand County must *"be prepared to accept"* is not an explanation but an evasion. What are the *"the competing interests"*, *"the different factors"* and the *"trade-offs"*? The offensive map was proposed by a single Republican, not a Democratic majority. So, please sincerely enlighten the citizens of Grand County.

Thank you in advance for your prompt attention to this issue as the deadline for our comment and argument is fast approaching.

--

Ted Kaplysh

tkaplysh@gmail.com

421 County Road 414

Granby, CO 80446-9025

Telephone: [303-748-8981](tel:303-748-8981)

Request that Jackson County Remain in 57th House District

Colojacksonadm

to:

reapp2011

07/19/2011 08:37 AM

Show Details

As a resident of Jackson County I am writing to request that Jackson County remain in the 57th House District. The interests of a rural county are far different than those of metropolitan areas. The concerns of a small rural county like Jackson would be completely overshadowed by the needs of Fort Collins and the surrounding area. We appreciate your consideration and hope that Jackson County can remain in the 57th House with the other rural counties that face similar issues, demographics, resources and concerns.

Sincerely,

Kent Crowder and Kay Crowder
573 Washington Street
Walden, CO 80480

Legislature reapportionment proposal affecting Grand County

Winter Park Mara

to:

reapp2011

07/19/2011 01:03 PM

Please respond to zbmara

Show Details

To whom it may concern:

It is my understanding that there is a proposal to change our house district Colorado State Representative from District 57. I am opposed to the proposed reapportionment map which removes Grand and Jackson Counties from House District 57 and puts them in districts on the Front Range. We are extremely happy with our current position and think it is a terrible idea to change this. Please take this email as my official objection to this proposal.

Thank you,

Mara Erlandson Realtor and 22 yr resident of Grand County.

Mara and Brenda

Mara Erlandson, CRS, GRI

Brenda Freeman, Broker Associate

Grand Mountain Group with Re/max Peak to Peak

Www.GrandMountainGroup.com

Referrals are the lifeblood of our business and Greatly Appreciated!

Office: 970-726-6777

Mara's Contact: email: zbMara@Yahoo.com

Cell: 303-489-7789 ~ Fax: 888-712-8801 Brenda's

Contact: email: Freeman.Brenda@Gmail.com Cell: 970-531-6841 ~ Fax: 888-714-6660



Gunnison County Board of County Commissioners

Phone: (970) 641-0248 • Fax: (970) 641-3061

Email: bocc@gunnisoncounty.org • www.GunnisonCounty.org

July 19, 2011

Colorado Reapportionment Commission

Mario Carrera, Chair

1313 Sherman St.

Office 122

Denver, CO 80203

reapp2011@state.co.us

Ladies and Gentlemen,

The Gunnison County Board of County Commissioners implores you to use common sense and constitutional direction when developing the House District 61 political boundaries. The State constitution requires you to be true to "Communities of Interest", yet that principle appears to be ignored in the currently proposed redistricting plan. Additionally, the constitution requires that counties remain whole except when necessary to equal population requirements, which is not applicable in this situation given the alternative plan that keeps us whole.

As large as our county is in square miles, only 15% of it is privately owned, creating a close-knit, greater community along our primary valley corridor and a symbiotic relationship between the populations in and around the City of Gunnison and in and around the Town of Crested Butte. We are a rural resort community with shared socio-economic interests. To that point Gunnison County has a single school district and subsequent school board; we enjoy a unified health care system with a single hospital, senior care center, assisted living facility, hospice and home health care organizations; we have a valley-wide Rural Transportation Authority that is governed by elected officials from three municipalities and the county; our Tourism Association that markets the entire county, year around, is county-wide and voter approved; our Gunnison County Stockgrowers Association, one of the oldest in the state, proudly boasts members from every corner of the county; our community foundation is county-wide; we are unified on critical water issues by the Upper Gunnison River Water Conservancy District and our economic development plan that was submitted to Governor Hickenlooper's "bottom up" process was developed from stakeholders in all parts of our county. We could go on and on, but it should be clear that we are a strong "community of interest" that should remain whole.

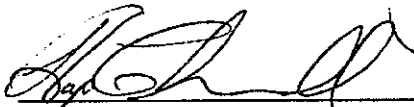
Further, it is vital that Western State College, an integral part of our entire county, be represented by a single voice in the State House.

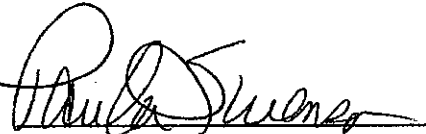
Please also consider that splitting districts in small population counties tends to threaten citizen involvement in the political process, potentially confusing citizens about who their representative is and making it more difficult for local elected officials to carry their constituent's points of view to

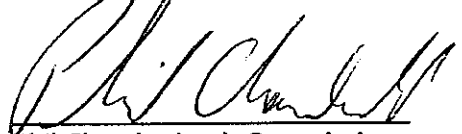
multiple state representatives. This is a non-partisan issue made clear by the fact that District 61 has had both Republican and Democratic representatives in the last decade.

We cannot emphasize enough the wisdom in keeping Gunnison County unified as a synergistic, interdependent community of interest within a single state house district, and we expect that you will ultimately serve our citizens in that regard.

Sincerely,


Hap Channell, Chairperson


Paula Swenson, Commissioner


Phil Chamberland, Commissioner



Reapportion Longmont
Padma to: reapp2011

07/19/2011 03:06 PM

I am a resident of Longmont and totally opposed to the reapportionment of Longmont to provide for just one seat to represent the citizens of Longmont. Not only would the diversity of Longmont's population not be represented, but about 9,000 people could be be unrepresented.

Padma Wick
4213 Frederick Circle
Longmont, CO 80503

Reapportionment
Cathy Thomas
to:
reapp2011
07/19/2011 05:33 PM
Show Details

Reapportionment Committee:

My understanding of the goal of reapportionment is to keep areas of the state with common interests together to insure that ALL residents have representation. Recently I read that the committee may be considering lumping my County, Grand and Jackson County in a House District with areas of the front range. I believe this would be a serious mistake as these areas have little, if anything, in common. The interests of those who choose to live in densely populated areas are pretty much the polar opposite of those of us who choose to live where there are fewer people and more nature. I urge you to rethink any such consideration as it defeats the goals of the process.

Sincerely,
Cathy R. Thomas
P.O. Box 1416
Granby, CO 80446-1416
thomas.cathy50@yahoo.com

reapp
Jay Puckett
to:
reapp2011
07/19/2011 07:39 PM
Show Details

Hello-

It seems odd that we are considering combining west-slope and east-slope counties into one district. The issues and perspectives are much different between the two. I strongly suggest keeping the two in separate districts in order to preserve adequate representation of folks on the west side.

Jay
puckett@bridgetech-laramie.com
307-760-5919

Longmont
Melinda Abplanalp
to:
reapp2011
07/20/2011 08:07 AM
Show Details

Longmont is a unique area, I work in west Boulder and live in north east Longmont. Longmont needs are entirely different than Boulders. We need our own representative, to make sure the rural and small communities are protected.

--

Melinda Abplanalp
West End Plaza
1601 METROPOLITAN #B
LONGMONT, CO 80504
303-625-1007

Request for the Reapportionment Committee re: HD1
 Daniel Willis
 to:
 reapp2011
 07/20/2011 08:17 AM
 Show Details

Dear Reapportionment Committee Members:

Thank you for all of the hard work you have done to reapportion Colorado's State House and State Senate seats. It is a Herculean task that thankfully only has to be done every 10 years.

I would like to make one request for a very small change regarding House District 1 before you adopt a final map. The Senate District 32 map that you gave your initial approval to already addresses this issue.

Currently, and under map H7001v2, there exists a problem. There is a very small (less than one block) island of Jefferson County inside Denver's borders near the intersection of S. Wadsworth and W. Stanford Ave. This small piece of Jeffco only has 3 registered voters in it, and these 3 voters are the only Jefferson County voters in HD1. Therefore they form a precinct to themselves. The problem with this is that they tend to all vote the same way on every issue so everyone can see how they voted on published election results, effectively eliminating their right to a secret ballot.

I would respectfully request that you also include the Jefferson County portion of the Town of Bow Mar in HD1 to order to allow the Jefferson County Clerk to make all of the Jeffco portion of HD1 one precinct with a couple hundred voters in it in order to protect those people's right to a secret ballot. This is how the problem is averted on your approved State Senate map, so the Jeffco portion of SD32 and HD1 will be the same area and can therefore be the same precinct. I intend to make a similar request to the Court in regards to redistricting the congressional districts to ensure this same area in question is all in one CD to also allow for it to be one precinct.

As far as the numbers are concerned, the currently approved HD1 is a little over 1800 people under the ideal number. HD38 (the location of Jeffco portion of Bow mar on H7001v2) is 574 under. Moving the roughly 400 people in the affected area from HD38 to HD1 still leaves both HD's well within the acceptable margin for HD population.

Thank you for your attention to this small detail.

Daniel Willis
 former Secretary,
 Democratic Party of Denver

HD1 → -2.4% OR -1,849
 ND38 → -0.7% OR -574

PEOPLE IN JEFFCO / BOW MAR ≈ 255

Congressional Redistricting

rockymtnstore

to:

reapp2011

07/20/2011 10:18 AM

Show Details

I can say without a doubt that living in Grand County and having our US Congressional District aligned with Boulder has been a disaster. Our way of life is completely different from those in Boulder but because of the population differences our US Representative is always elected by those living in Boulder. I feel as though we have no voice in the U.S. Congress by our official whose leanings are decidedly different from those of us who live in a rural area. When was the last time U.S. Congressman Polis was in Grand County for a public meeting? October 2009 - almost 2 years ago

Aligning us in the State Congress with those on the Front Range will again leave us with "no" representation as we will not have the voting power to elect someone who represents us and our way of life. I urge you to reconsider the current realignment and leave those of us in a rural area in a rural district.

Thank you for your consideration.

Ken Anderson
Rocky Mountain General Store
Granby, CO
970-887-1500

Reapportionment of Grand County

Sandy Pedersen

to:

reapp2011

07/20/2011 02:55 PM

Show Details

This is to address my disagreement with the Reapportion Committee's plans to remove Grand County from House District 57. It is important that Grand County stay with HD 57, which has counties of common interest with Grand County. A move out of District 57 would be a grave error, and very detrimental to Grand County. Please reconsider.

Sandra Pedersen

Grand County resident

97 Forrest Drive, Granby, CO 80446

Redistricting Jackson County

Conni MacDonald

to:

reapp2011@state.co.us

07/20/2011 05:56 PM

Please respond to Conni MacDonald

Show Details

I am absolutely against this redistricting issue, specifically, putting Jackson County in with Larimer; and Grand County in with Boulder.

Jackson and Grand are both rural counties, who depend on agriculture; while Boulder and Larimer are much larger counties with large cities to deal with. These counties do not have enough in common to be "lumped together". You will essentially be taking away Jackson and Grand counties voices by forcing this redistricting. The people of Jackson and Grand counties have a right to have their voices heard, and to be represented by like-minded individuals to protect their interests.

Thank you for your time.

Conni L. MacDonald

Registered Larimer County Voter

Jackson County
Steven Geer
to:
reapp2011
07/20/2011 07:37 PM
Show Details

To Whom it May Concern

I am from Jackson County and registered to vote here. I have also lived (for 10 years) on the Front Range in Fort Collins. We have very little to NOTHING in common with folks in Fort Collins. Please do not group us in the same district with any Front Range county!!

Regards,

Steven Skyler Geer
Jackson County Registered Voter

Jackson County
svarner16
to:
reapp2011
07/20/2011 08:21 PM
[Show Details](#)

The issues facing Jackson County are much more similar to those of Routt, Rio Blanco and the other Western slope counties. Our interests will be much better served in the 57th House District than if we were placed into the same district as Ft. Collins where our concerns will be overshadowed by the larger population of Larimer County.

Thank you for you time.

Stacy Varner

Grand County not represented by any Front Range County

Harry Kottcamp - gmail

to:

reapp2011

07/20/2011 08:42 PM

Show Details

Commissioners,

It is completely against all principles of fairness to take away Grand County's representation in the Colorado State House by putting us with either Larimer or Boulder Counties. Both Counties have overwhelming numbers of voters, which will effectively suppress our representation.

Grand County is a uniquely West Slope County and cannot be represented by Front Range Interests. The current definition of Colorado House District 57 makes sense by combining communities of mutual interest. Communities in Boulder County and Larimer County have interest that are diametrically opposed to the interests of Grand County. Those Communities want our water and we want to maintain our environment. The Front Range side of Rocky Mountain National Park competes with Grand County for the investment of resources, and frankly, the Grand County side of the park has been neglected for years. US 40 is the heart beat of our transportation system and it is the life line that ties Grand, Routt, and Moffat together. Grand County has been trying to open the scenic route over Rollins Pass, which has been consistently blocked by Boulder County.

Your original map (H3001.V1) is the only one that makes sense for Grand County.

To take away Grand County's representation in the Colorado House is shameful. To eliminate representative government for anyone in Colorado is shameful.

Take action now to right this wrong.

Respectfully,

Harry Kottcamp
Chairman, Grand County Republicans

Grand County
MSSchneids
to:
reapp2011
07/21/2011 10:25 AM
Show Details

I oppose the redistricting of Grand County and placing it with Larimer or Boulder County. Grand County is a western slope county with its own concerns which are very different from front range counties. With our small population compared to Larimer and Boulder counties, our interests would not be represented well at all. I feel we should remain with western slope communities and their representation. We do not have the same concerns as the front range and are in opposition to many of their agendas.

Kris Schneider
Fraser, Colorado

July 21, 2011

Dear Reapportionment Committee,

I appreciate your service, but the map that you are considering, putting Grand County in the same House District as Larimer County, is just plain wrong! We do not want to be represented by a Front Range Legislator. Please remember that the purpose of districting is to place similar counties together, and to ensure fair representation for All of those counties. Grand and Larimer are NOT similar in our needs, nor our way of life. Lumping us together is NOT fair representation for those of us in Grand.

Sincerely,

Marjorie Dowell

Marjorie Dowell
Granby CO 80446

Redistricting and its impact on Grand County

Ted Kaplysh

to:

Ryan Call, Colorado Redistricting Commission

07/21/2011 10:50 AM

Cc:

Cindy Leonard, Glen Snieder gotvtchair, Harry Kottcamp, Ted Kaplysh, Tim Moreland, Randy

Baumgardner

Show Details

Two days ago I sent you an email relative to this subject matter and, in particular, directed toward your response to an email from Al Olson in his leadership role with High Country Conservatives. I have not received a response.

As a voting registered Republican and as one of three vice chairmen for the Grand County GOP I think I am entitled to have you explain your response to Al. Please favor me with the courtesy of a response addressing the questions and concerns contained in that earlier email.

Thank you,

--

Ted Kaplysh

tkaplysh@gmail.com

421 County Road 414

Granby, CO 80446-9025

Telephone: [303-748-8981](tel:303-748-8981)

Grand County district 57
Jill Ryall
to:
reapp2011@state.co.us
07/21/2011 11:03 AM
Show Details

Dear Redistricting committee members,

I appreciate you serving on this important committee. However, please reconsider placing Grand County in a House district with Larimer County. The differences between Grand County on the Western slope, and any Front Range county, are vast. For one, there is no easy way to travel from Grand to Larimer at least 9 months of the year. For another, the larger population of Larimer County will completely overshadow the smaller rural population of Grand County, so our representation will be practically non-existent.

Thank you for your time and consideration.

Sincerely,

Jill Ryall

Human Resources Manager
Granby Ranch

Direct 970.887.5202 | Fax 970.887.5105

Mobile 970.531.2202

www.granbyranch.com

Do Something Amazing for Your Family

Find us on Facebook<<http://facebook.com/skisolvista>>

“Like” SolVista Bike Park on Facebook for a free* bike lift ticket!

If we receive 2,500 likes by July 30th, we will throw a Facebook Schindig on July 31, complete with free lift tickets, live music and \$1 drafts of beer for Facebook Fans!

“Like us” at <https://www.facebook.com/bikesolvista>

Private & Confidential. This message is intended only for the use of the individual or entity to which it is addressed and contains information that is privileged and confidential. If the reader of this message is not the intended recipient or an employee or agent responsible for delivering the message to the intended recipient, you are hereby notified that any dissemination, distribution, or copying of this communication is strictly prohibited. If you have received this communication in error, please notify us immediately and delete this message.

Jackson County
Jason Crocket
to:
reapp2011
07/21/2011 02:49 PM
Show Details

To whom it may concern:

As a resident of Jackson County I am writing to request that Jackson County remain in the 57th House District. The interests of a rural county are far different than those of metropolitan areas. The

concerns of a small rural county like Jackson would be completely overshadowed by the needs of Fort Collins and the surrounding area. We appreciate your consideration and hope that Jackson County can remain in the 57th House with the other rural counties that face

similar issues, demographics, resources and concerns.

Sincerely,
Jason Crocket

Redistricting - House 57
Tim Moreland - PTPP Electric

to:

reapp2011

07/21/2011 04:34 PM

Cc:

"ted kaplysh"

Show Details

Greetings,

I appreciate your efforts to serve on the redistricting committee. I am writing to request that Grand County remain with other West Slope communities. To be placed with Larimer County is curious at best. Affiliation with Larimer County would overshadow our voice and I believe we would basically be left without representation which is not acceptable. We are a rural West Slope county with different issues and need to be represented as such. Larimer County needs to be placed with other Front Range communities. There is no support in Grand County for this action from either Democrat or Republican constituents. We expect that our simple request will be accommodated because you were all elected to do what is fair and right...listen to the people... and for now listen to the people of Grand County. I appreciate your kind consideration.

Respectfully,
Tim Moreland

I support maps H6001v1 & S6003v1

Cacaniglia

to:

reapp2011

07/21/2011 04:34 PM

Show Details

I support maps H6001v1 & S6003v1

Carol Caniglia

Carbondale, Eagle Co, CO 81623



Redistricting maps
Jo Brown to: reapp2011@state.co.us

07/21/2011 07:14 PM

I support Maps H6001v1 and S6003v1.

Jo Brown
Jo Brown@JoBrownVail Valley.com

57th District
Stacie Trick
to:
reapp2011
07/21/2011 08:28 PM
Show Details

Please keep Jackson County in the 57th District. Thanks!!

Jackson County

Jason Slane

to:

reapp2011@state.co.us

07/22/2011 07:21 AM

Please respond to Jason Slane

Show Details

To Whom it May Concern:

I am writing this to express my extreme concern that Jackson County will no longer have a representative from the Western Slope. Grouping us in with the Front Range is a horrible idea at best. We are the most truly rural county in Colorado, and I am horrified that someone from the Front Range would be speaking for a rural lifestyle that they do not understand. Someone from Ft. Collins could not truly appreciate ranching and logging. (Remember why the forests are now beetle killed? Responsible management took a backseat to the concerns of environmentalists who did not understand the scope of the problem.)

I sincerely hope that everyone involved in this wretched plan listens to the concerns of the citizens that it will impact, even though we are few compared to the Front Range.

Yours,

Jason Slane

PO Box 185

Walden, CO 80480

MAPS H6001v1 & S6003v1

Lu Maslak

to:

reapp2011

07/22/2011 09:07 AM

Show Details

To Whom It May Concern;

I support maps H6001v1 & S6003v1

Lu Maslak

lmaslak@sbcglobal.net

Date Call Received	Caller's Name	Caller's Address or Location	Message from Caller
7/22/2011	Donna	Hayden CO	Opposed to House 57 plan. Asked that we do not let that happen. She said that their interests are the same.

Reapportionment

Cliff Davis

to:

reapp2011

07/23/2011 10:26 AM

Show Details

I would ask that you consider leaving Grand county in it's current district with adjoining western slope counties. Even though Grand county is close in (as the crow flies) miles to the front range, it is much farther in actual driving distance and on the opposite side of the Continental Divide. To put us in a front range district would be like combining countries on opposite sides of the world and expecting cooperation. It does not make sense except when looking at a map.

Thanks for listening.

Cliff Davis- A Grand county resident

970-281-2390

cliffdavis@rkymtnhi.com

Please observe the Colorado Constitution
William Hamilton
to:
reapp2011
07/23/2011 03:46 PM
Please respond to wmpenn71
Show Details

Dear Commission Members:

Article V, Section 47, Paragraph (3) of the Colorado State Constitution cites six “communities of interest” that are to be preserved in the redistricting of Colorado’s political subdivisions. Those “communities of interest” are: ethnic, cultural, economic, trade area, geographic and demographic.

Because of the massive Continental Divide and the vast differences in population sizes, redistricting Grand County into either Boulder County or Larimer County would violate all six of those “communities of interest.”

Because of geography, Grand County has no year-round, all-weather economic commerce or trade area with Boulder County or Larimer County. With its 163,069 voters, Boulder would politically overwhelm Grand County’s 8,845 voters. Larimer County’s 167,638 voters would make the demographic imbalance even worse. While Grand County and the entire Western Slope are virtually ethnically and culturally homogeneous, that is far less so along the Front Range.

Therefore, redistricting Grand County into either Larimer County or Boulder County would violate six out of six of the “communities of interest” the Colorado Constitution says should be preserved.

Sincerely,
William Hamilton, J.D., Ph.D.
PO Box 2001
Granby, CO 80446
970.531.1100

Pam Pedersen
to:
reapp2011
07/24/2011 09:15 PM
Show Details

Please do not put us with either Larimer or Boulder county. We have nothing in common with them. We belong with other mountain counties. We are western slope and they are eastern. There is no connection of any kind to base any kind of reapportionment that involves combining us with them.

Pamela Pedersen
Granby, CO

Penny Stock Jumping 3000%

Sign up to the #1 voted penny stock newsletter for free today!
AwesomePennyStocks.com

07-14-11

Reapportionment Staff
1313 Sherman St.
Office 122
Denver, Colo 80203

I am writing to express my
disarray, disappointment, and
pleas being against putting
Grand Co. (on the western slope)
to the Larimer County district.
We have nothing in common,
your area wants what little
water we have left here. And
this is just another under-
handed way to get it. We
have different areas, different
problems. We could never see
nor get help from someone
that far away. It is so very
wrong & please stop this
crazy business. Leave West Slope
on West slope!

Dale E Pulliam
Jesse J Pulliam
PO Box 535
Kremming Colo
80459

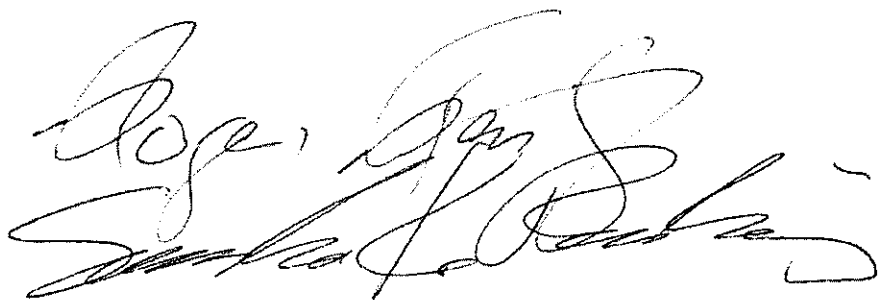
Roger Reinking

From: Roger Reinking [r.reinking@comcast.net]
Sent: Tuesday, July 12, 2011 9:59 AM
To: 'reapp2011@state.co.us'
Subject: Objection to Longmont Reapportionment
12 July 2011

Dear Reapportionment Committee,

Although the City of Longmont may wish to have its own House District, Longmont residents had best recognize that it is the innovation engine of Boulder that employs a great number of them. By redistricting, they will shoot themselves in the foot. The Longmont District should be a unit with Boulder County. Please do not assume that everyone with a Longmont Address is happy with the redistricting proposal. We live in Boulder County west of Longmont and want no part of the redistricting. Should certain sour grapes Longmont politicians get their way, **please exclude zip code 80503** (the City is 80501). **Please keep us in House District 13.** Thank you.

Roger and Sandra Reinking
6226 Misty Way
Longmont, CO 80503

Handwritten signatures of Roger and Sandra Reinking. The signatures are written in black ink and are somewhat stylized and overlapping.

July 8, 2011

Mr. Mario Carrera, Chair
Colorado 2011 Reapportionment Commission
1313 Sherman Street
Room 122
Denver, CO 80203

RE: Concerns Regarding Proposed Move of Grand County Out of House District 57

Dear Mr. Carrera and Commission Members,


Please accept this letter written on behalf of the Winter Park Town Council as our request to keep all of Grand County together with other Western Slope communities. It is our belief that the reapportionment plan currently being discussed – which would move Grand County into a district with portions of Larimer or Boulder Counties – does not combine communities with shared interests and dilutes our voices here in Winter Park.

Grand County does not share any cultural, economic, or physical ties with either Larimer or Boulder Counties. As you know, our economic interests rely on a mixture of winter sports, tourism, and some agricultural interests. These same economic characteristics can barely be found on the Front Range, and we do not have any commerce with these communities on these grounds. Further, there are no physical connections (i.e. roads) that consistently connect Grand County with these other communities, and year-round access to either Larimer or Boulder County is difficult to establish, at best.

Cultural differences abound between Grand and Larimer or Boulder Counties. Grand County residents identify with the Western Slope, and are often at odds with a variety of Front Range interests (water, to name one). We compete with certain communities in Larimer County for business in Rocky Mountain National Park, and any representative from this new district will not be able to effectively represent these competing interests. Further, Grand County's voice will be significantly diluted due to the greater population base being on the other side of the Continental Divide, effectively giving us no voice at all.

We greatly appreciate your consideration of our concerns regarding the reapportionment of Grand County, and we hope that you will consider keeping Grand County affiliated with other Western Slope communities in which we share common interests, such as those currently in House District 57.

Sincerely,


James F. Myers
Mayor

Town of Winter Park

p.o. box 3327

winter park, colorado 80482

phone (970) 726-8081

fax (970) 726-8084

www.winterparkgov.com

Town of Hot Sulphur Springs

C O L O R A D O

Reapportionment Staff
1313 Sherman Street
Office 122
Denver, Colorado 80203
July 17, 2011

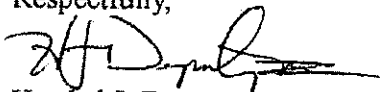
To whom it may concern,

I am writing on behalf of the Town of Hot Sulphur Springs Board of Trustees and the overwhelming majority of Town citizens to strenuously object to proposed redistricting plans that combine Grand County with Front Range Counties and communities. State Constitutional criteria require that "Communities of interest – ethnic, economic, cultural, demographic, trade area and geographic – are to be preserved within a single district whenever possible". The proposed redistricting plans ignore the geographic fact that we are separated from adjoining front range communities by the Continental Divide. This fact alone is responsible for other differences in cultural, economic, demographic and trade area issues that separate us from our Front Range neighbors. The "Voting Rights Act" requires that districts be drawn so as to give minority groups an equal opportunity to participate in the political process and to elect representatives of their choice. While not strictly a "minority group", the proposed redistricting would essentially silence the voices of the citizens of Grand County in the political process by diluting it in a much larger and differing "community of interest".

The State of Colorado is a large and diverse state. Our only hope for the future is to include and give political voice to the greatest number of "Communities of Interest" possible. The proposed redistricting plans would silence a large geographic community of interest, Grand County, with the resulting loss of civic interest, ideas and potential solutions to problems facing the State.

We are not looking at the redistricting issue in terms of Republican vs. Democrat or Front Range vs. Western Slope. We are looking at this issue as an opportunity to give the greatest number of citizens the ability to participate in the political process in a meaningful and equitable way.

Respectfully,



Hersh J. Deputy, III
Mayor

513 Aspen Street • PO Box 116 • Hot Sulphur Springs, CO 80451
Phone (970) 725-3933 • Fax (970) 725-3443



Automatics & Machinery Co., Inc.

150 Martin St., Longmont, CO 80501 (303) 651-6545 Fax (303) 651-6556

July 14, 2011

Colorado Reapportionment Commission
Mario Carrera, Chair
1313 Sherman Street
Suite 122
Denver, CO 80203

Dear Reapportionment Commission Members:

The state reapportionment process for Colorado is an important exercise that ensures all Coloradoans' voices are heard fairly and evenly in the Colorado General Assembly. For the last decade, the city of Longmont has been split between two state house districts, being represented in districts 11 and 12. In addition, rural areas around Longmont are included in another two districts. We ask the commission to carefully consider the City of Longmont when deciding on state house district boundaries for the next decade.

The Longmont Area Chamber of Commerce does not support candidates for office, and is actually prohibited from doing so per our by-laws. However, we recognize the importance of smart business policy and regularly call upon our elected officials to vote on legislation that we trust will further economic prosperity for our city and state.

We believe that our voice in the Colorado House of Representatives could be heard more evenly and fairly with one district more exclusive to Longmont. Until the recent election of Longmont resident Deb Gardner in 2010, Longmont a city of over 86,000 did not have a city resident in the Colorado House of Representatives.

In addition, our voice is shared with the communities of Boulder, Lafayette and Louisville. Rural areas around Longmont share a district with communities as far away as Idaho Springs and Georgetown. Not one current house district represents a unified Longmont voice.

We understand that the population of Longmont prohibits us from having a sole district seat. However, a quick look at two other northern Colorado cities larger than Longmont, Fort Collins and Greeley finds that both are represented by multiple seats but each has a district almost exclusive to their city or immediate environs. I am in agreement with Kathy Weber-Harding, President of The Longmont Area Chamber of Commerce and we request commission members adhere to the spirit of Colorado law and recognize the City of Longmont as a community of geographic, cultural and economic interest and that the house districts for our area be as contiguous and compact as possible.

Sincerely,

Steven Beck
7220 Spring Creek Circle
Niwot, CO 80503

And

Automatics & Machinery, President
150 Martin St
Longmont, CO 80501

Email: sales@automatics.com <http://www.automatics.com>



CNC SWISS LATHES & CNC MACHINE TOOLS
SCREW MACHINES • TOOLING & ACCESSORIES
BUY • SELL • CONSIGNMENTS • AUCTIONS & APPRAISALS





LONGMONT AREA CHAMBER OF COMMERCE

July 1 2011

Colorado Reapportionment Commission
Mario Carrera, Chair
1313 Sherman Street
Suite 122
Denver, CO 80203

Dear Reapportionment Commission Members:

The state reapportionment process for Colorado is an important exercise that ensures all Coloradoans' voices are heard fairly and evenly in the Colorado General Assembly. For the last decade, the city of Longmont has been split between two state house districts, being represented in districts 11 and 12. In addition, rural areas around Longmont are included in another two districts. We ask the commission to carefully consider the City of Longmont when deciding on state house district boundaries for the next decade.

The Longmont Area Chamber of Commerce does not support candidates for office, and is actually prohibited from doing so per our by-laws. However, we recognize the importance of smart business policy and regularly call upon our elected officials to vote on legislation that we trust will further economic prosperity for our city and state.

We believe that our voice in the Colorado House of Representatives could be heard more evenly and fairly with one district more exclusive to Longmont. Until the recent election of Longmont resident Deb Gardner in 2010, Longmont a city of over 86,000 persons, did not have a city resident in the Colorado House of Representatives. In addition, our voice is shared with the communities of Boulder, Lafayette and Louisville. Rural areas around Longmont share a district with communities as far away as Idaho Springs and Georgetown. Not one current house district represents a unified Longmont voice.

We understand that the population of Longmont prohibits us from having a sole district seat. However, a quick look at two other northern Colorado cities larger than Longmont, Fort Collins and Greeley finds that both are represented by multiple seats but each has a district almost exclusive to their city or immediate environs. We request commission members adhere to the spirit of Colorado law and recognize the City of Longmont as a community of geographic, cultural and economic interest and that the house districts for our area be as contiguous and compact as possible.

Sincerely,
The Longmont Area Chamber of Commerce

Kathy Weber-Harding
President/CEO

Scott Cook
Member Services/Public Policy Director

**2011 Board of Directors – Longmont Area
Chamber of Commerce (Updated 6- 2011)**

Chair

****Mr. Rick Samson (RE: 2013)**
Samson, Papis & Marsh, LLC
255 Weaver Park Rd., Suite 200
P.O. Box 1079
Longmont, CO 80502-1079
303-776-8499 X 101
res@spmlawyers.com

Chair-Elect

****Mr. Mitchell Carson (TL : 2014)**
Longmont United Hospital
1950 Mountain View Ave.
Longmont, CO 80501
303-651-5025 Cell: 303-961-0581
mcarson@luhcares.org

Secretary

****Ms. Eve Bruce (TL: 2014)**
Express It! Mail Center
205 Ken Pratt Blvd. #120
Longmont, CO 80501
303-684-0444
eve@expressitmail.com

Treasurer

****Mr. Craig Chaney (RE: 2013)**
Brock & Company CPAs P.C.
900 S. Main Street, Suite 200
Longmont, CO 80501
303-776-2160
craig@brockcpas.com

Immediate Past Chair

****Mr. Monty Meduna (RE: 2014)**
First National Bank
1155 Canyon Blvd. Suite 200
Boulder, Co. 80502
303-544-7970
mmeduna@1stnationalbank.com

Mr. Kevin Block (RE: 2013)

Xilinx
3100 Logic Drive
Longmont, CO 80503
303-652-3543 Cell: 720-810-0217
kevin_block@xilinx.com

****Mr. Forrest Fleming (RE: 2013)**

Instant Imprints
965 S. Hover St., Ste. B
Longmont, CO 80503
303-774-9260
longmont@instantimprints.com

Sue Ellen Grimaud (RE: 2014)

Prudential Real Estate of the Rockies
4420 Bella Vista Dr.
Longmont, Co. 80503
Cell: 303-746-7670
sgrimaud@comcast.net

Mr. Don Haddad (RE: 2013)

St Vrain Valley School District RE-1J
395 S. Pratt Parkway
Longmont, CO 80501
303-776-6200
haddad_don@stvrain.k12.co.us
lohmann_linda@stvrain.k12.co.us

Mr. Todd Isaacson (RE: 2011)

Express Employment Professionals
700 Ken Pratt Boulevard, Suite 109
Longmont, CO 80501
303-678-1608
todd.isaacson@expresspros.com

Mr. Paul Kelley (RE: 2013)

Longmont Signs, Inc.
326 3rd Ave.
Longmont, Co. 80501
303-776-6258
Paul.kelley@longmontsigns.com

Eric Kittelberger (RE: 2014)

Guaranty Bank & Trust
401 Main Street
Longmont, Co. 80501
720-494-4942
Eric.kittelberger@guarantybankco.com

Mr. Brandon Knudsen (RE : 2013)

Ziggi's Coffee House
400 Main Street
Longmont, CO 80501
303-682-5120
brandon@ziggiscoffee.com

Ms. Debby Paris (RE: 2011)

Deb's Senior Services, LLC
Longmont, CO
303-589-2182
debby@debsseniorservices.com

Ms. Carol Schack (RE: 2013)

Rocky Mountain, Realtors
275 S. Main St. Suite 100
Longmont, Co. 80501
720-864-9717 Cell: 303-931-4945
cschack@prumr.com

Ms. Liz Smokowski (RE: 2011) (replaced Rob Archer)

Imagine!
1400 Dixon Ave.
Lafayette, CO 80026
303-926-6473
L.smokowski@imaginecolorado.org

Mr. Kyle Snyder (RE: 2014)

Land Title Guarantee Company
4700 E. Bromley Lane Suite 101
Brighton, Co. 80601
303-655-9973
ksnyder@ltgc.com

****Mr. Ben Weir (RE: 2014)**

Ben Weir Consulting
1831 Ashford Circle
Longmont, Co. 80501
720-334-6664
benweir1831@comcast.net

Ms. Kathy Weber-Harding

Longmont Area Chamber of Commerce
528 Main Street
Longmont, CO 80501
720-864-2874
kharding@longmontchamber.org

(RE: Date) = Eligible for re-election for 3-year term

(TL: Date) = Term limit effective end of that year

** = *Members of Executive committee*

Longmont Area Chamber of Commerce
Public Policy Committee

Sue Bridgeman
St. Vrain Manor

Eve Bruce
Express It!

Joel Champion
Boulder County GOP

Stacy Cornay
Communication Concepts

Kathy Crowder
Re/Max Alliance

Marvin Dyer
Dyer Realty Inc.

Josh Goldberg, Chair
Left Hand Brewing

Sue Ellen Grimaud
Prudential Real Estate of the Rockies

John Hunter
Prime Real Estate Services

Jeff Ilseman
Chestor House

Ryan Jenkins
Wells Fargo Bank

Joey Kee
Marriott Hotels

Randy Lis
Cornerstone Mortgage Co

Jackie List
Safe Shelter of the St Vrain Valley

Claudia Maciuk
Volk & Bell Associates

Nick McElhiney
Ergonomic Evolution

Trip Merklein
St. Vrain Valley Education Association

Mandy Myers
SOS Staffing

Jennifer Paris
State Farm Insurance

Steven Olson
B2B CFO

Marty Quigley
ERA Herman Group

Alex Sammoury
Longmont Entrepreneurial Network

Carol Schack, Vice Chair
Prudential Rocky Mountain Realtors

Ben Weir
Ben Weir Consulting

July 15, 2011

Mario Carrera, Chairperson
Colorado Reapportionment Commission
1313 Sherman Street, Suite 122
Denver, CO 80203

Dear Reapportionment Commission Members:

The state reapportionment process for Colorado is an important exercise that ensures all Coloradoans' voices are heard fairly and evenly in the Colorado General Assembly. For the last decade, the city of Longmont has been split between two state house districts, being represented in Districts 11 and 12. In addition, rural areas around Longmont are included in another two districts. We ask the Commission to carefully consider the city of Longmont when deciding on state house district boundaries for the next decade.

The Longmont Area Chamber of Commerce does not support or endorse candidates for office. However, we recognize the importance of smart business policy and regularly call upon our elected officials to vote on legislation that we trust will further economic prosperity for our city and state.

We believe that our voice in the Colorado House of representatives could be heard more evenly and fairly with one district more exclusive to Longmont. Until the recent election of Longmont resident Deb Gardner in 2010, Longmont, a city of over 86,000 persons, did not have a city resident in the Colorado House of Representatives.

In addition, our voice is shared with the communities of Boulder, Lafayette, and Louisville. Rural areas around Longmont share a district with communities as far away as Idaho Springs and Georgetown. Not one current house district represents a unified Longmont voice.

We understand that the population of Longmont prohibits us from having a sole district seat. However, a quick look at two other northern Colorado cities larger than Longmont (Ft. Collins and Greeley) finds that both are represented by multiple seats, but each has a district almost exclusive to their city or immediate environs. We request Commission members adhere to the spirit of Colorado law and recognize the city of Longmont as a community of geographic, cultural, and economic interest, and that the house districts for our area be as contiguous and compact as possible.

Thank you very much for your hard work and attention on this matter.

Respectfully,



Mitchell C. Carson
Chair-Elect
The Longmont Area Chamber of Commerce

MCC/jc



July 11, 2011

Mr. Mario Carrera, Chair
Colorado 2011 Reapportionment Commission
1313 Sherman Street
Room 122
Denver, CO 80203

RE: Concerns Regarding Proposed Move of Grand County out of HD 57

Dear Mr. Carrera and Commission Members,

Please accept this letter as a request from the Mayor, Town Board of Trustees and Citizens of Grand Lake to reconsider the current proposal to move Grand County into a district with either Larimer or Boulder County. This reapportionment plan would fail to achieve much of the state's constitutional criteria by pairing a rural west slope county with densely populated Front Range County.

Specifically, there is a requirement that districts be composed of communities of interest- ethnic, economic, cultural, demographic, trade area and geographic- are to be preserved within a single district whenever possible. To be blunt, Colorado as it is experienced in Grand County is much different than the Colorado that is experienced for people on the Front Range, and the result is a divergence on many of the criteria outlined above in substantive ways.

For many people in Grand County, the most memorable interaction that we've had with the Front Range over the past decade has been a water grab through both the Moffat Tunnel and Windy Gap Firming Projects; these projects have displayed that we are in fact not communities of similar interest—Grand County has water, many communities on the Front Range desire it, and there is a chasm between the sets of opinions on the most equitable way for this exchange to happen.

Our economic engine in Grand County varies somewhat throughout the region, but generally includes winter sports, tourism and some agricultural interests on the west side of the county. Other than a few grocery stores, Grand County has no "big box". Snow can fall any day of the year, traffic jams only occur when moose or elk cross the road, and dirt roads far exceed the paved ones. Contrast these aspects with the communities in Larimer and Boulder Counties.

Additionally, contiguity of election precincts can only be met in a theoretical sense when referring to this combination. Trailridge Road, which connects Grand and Larimer counties, is only open for approximately 100 days per year. The vast majority of the time, the most direct route to Larimer County would involve driving north through Jackson County. The link to Boulder County is even more precarious; regardless of Trailridge, for the vast majority of the county the most direct route would involve driving over Berthoud Pass, which would put the driver through Clear Creek and Gilpen Counties, as well as Summit County for the Kremmling residents prior to reaching this "contiguous election precinct".

P.O. BOX 99, GRAND LAKE, COLORADO 80447-0099

PH. 970/627-3435

FAX 970/627-9290

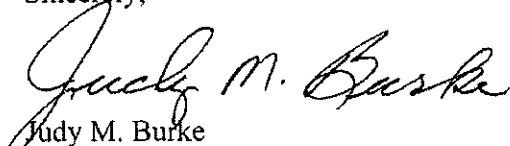
E-MAIL town@townofgrandlake.com

This geographic disconnection doesn't fare well for representative government, for any elected official will most certainly live in the Front Range and will be hard pressed to learn the region, much less represent the region when it comes to so many important issues in which the west slope and east slope fail to agree.

In short, Grand County is a west slope rural county, and it only makes sense that our political interests be preserved by keeping us aligned with other west slope communities that share our ethnic, economic, cultural, demographic, trade area and geographic interest.

We appreciate your consideration of our concerns on this matter, and hope that you'll help us continue our affiliation with other western slope communities.

Sincerely,



Judy M. Burke
Mayor



Gunnison County Board of County Commissioners

Phone: (970) 641-0248 • Fax: (970) 641-3061

Email: bocc@gunnisoncounty.org • www.GunnisonCounty.org

July 19, 2011

Colorado Reapportionment Commission

Mario Carrera, Chair

1313 Sherman St.

Office 122

Denver, CO 80203

reapp2011@state.co.us

Ladies and Gentlemen,

The Gunnison County Board of County Commissioners implores you to use common sense and constitutional direction when developing the House District 61 political boundaries. The State constitution requires you to be true to "Communities of Interest", yet that principle appears to be ignored in the currently proposed redistricting plan. Additionally, the constitution requires that counties remain whole except when necessary to equal population requirements, which is not applicable in this situation given the alternative plan that keeps us whole.

As large as our county is in square miles, only 15% of it is privately owned, creating a close-knit, greater community along our primary valley corridor and a symbiotic relationship between the populations in and around the City of Gunnison and in and around the Town of Crested Butte. We are a rural resort community with shared socio-economic interests. To that point Gunnison County has a single school district and subsequent school board; we enjoy a unified health care system with a single hospital, senior care center, assisted living facility, hospice and home health care organizations; we have a valley-wide Rural Transportation Authority that is governed by elected officials from three municipalities and the county; our Tourism Association that markets the entire county, year around, is county-wide and voter approved; our Gunnison County Stockgrowers Association, one of the oldest in the state, proudly boasts members from every corner of the county; our community foundation is county-wide; we are unified on critical water issues by the Upper Gunnison River Water Conservancy District and our economic development plan that was submitted to Governor Hickenlooper's "bottom up" process was developed from stakeholders in all parts of our county. We could go on and on, but it should be clear that we are a strong "community of interest" that should remain whole.

Further, it is vital that Western State College, an integral part of our entire county, be represented by a single voice in the State House.

Please also consider that splitting districts in small population counties tends to threaten citizen involvement in the political process, potentially confusing citizens about who their representative is and making it more difficult for local elected officials to carry their constituent's points of view to

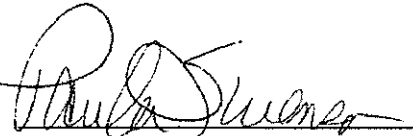
multiple state representatives. This is a non-partisan issue made clear by the fact that District 61 has had both Republican and Democratic representatives in the last decade.

We cannot emphasize enough the wisdom in keeping Gunnison County unified as a synergistic, interdependent community of interest within a single state house district, and we expect that you will ultimately serve our citizens in that regard.

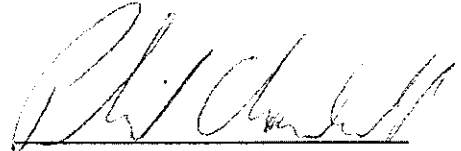
Sincerely,



Hap Channell, Chairperson



Paula Swenson, Commissioner



Phil Chamberland, Commissioner