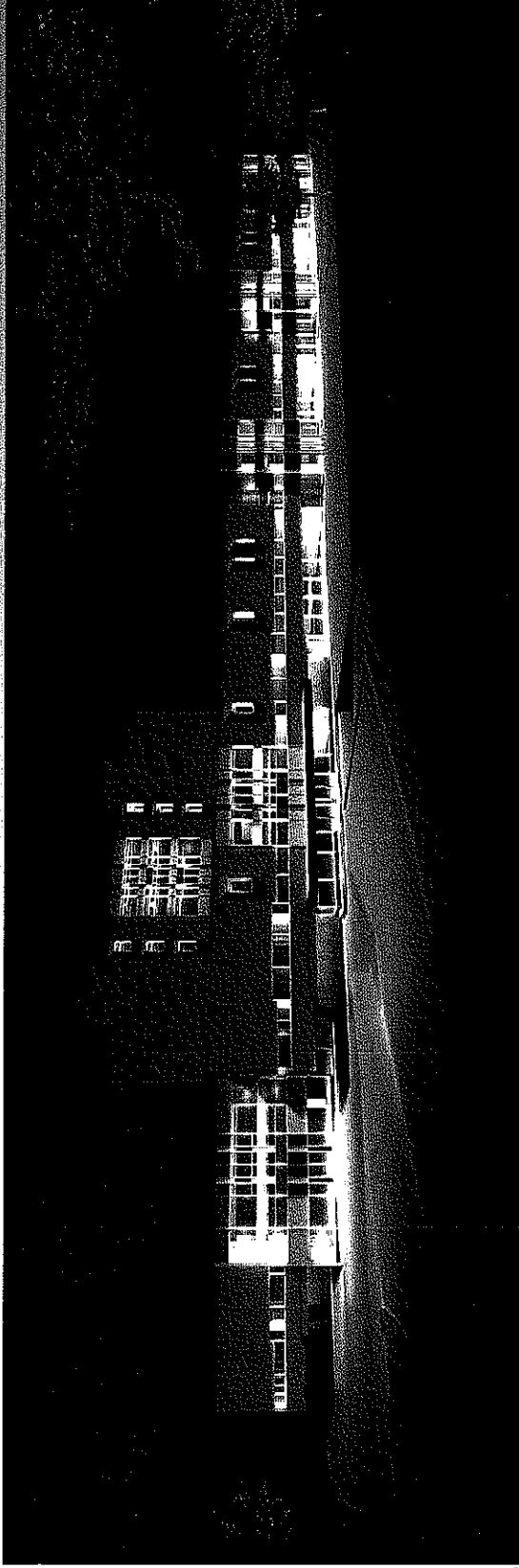


**Presentation to the
Capital Development Committee**

December 1, 2010

Colorado State University – Pueblo
Associate Vice President for Facilities Management Craig Cason

- Between 2007 and 2009 the University completed major capital projects totaling \$95.7M funded by auxiliary cash revenues (\$55.5M), the State Capital Construction Fund (\$14M), grant and donor funds(\$14M), and student facility fee revenues (\$12.2M).
- Currently, State-issued Certificates of Participation are funding a \$24.8 M Academic Resource Center/University Library renovation/addition project to be completed in Spring 2011.
- Annually, student facility fee revenues provide \$300k - \$500k for student-identified campus safety, recreational, and facility/grounds upgrade projects.
- The University's Operation & Maintenance of Plant budget of Education & General funds cannot support construction, renovations, and major maintenance but does expend an average of \$150k annually on small general maintenance projects.

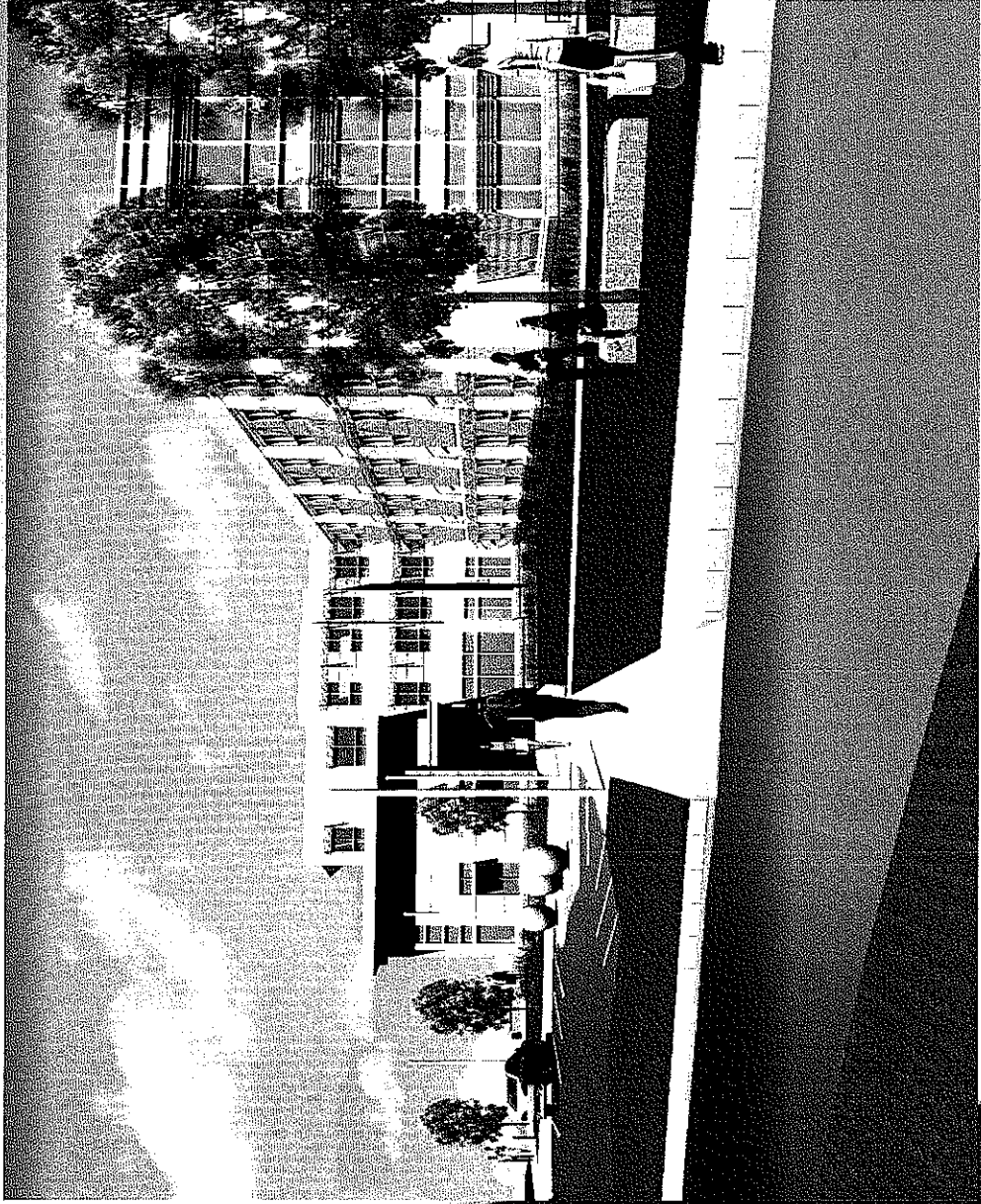


**Academic Resource
Center/University
Library**

- \$24.8M project cost
- \$22.0M from State-issued COPs
- \$2.8M from University funds
- Approximately 80% complete as of 10/30/10
- On schedule for Spring 2011 completion and occupancy

New Student Housing – Crestone Hall

- 250 new beds in 4 different room configurations
- \$15.7M Debt repaid with Housing Room Rental Revenue
- Construction started 7/08 and completed 8/09 on schedule and under budget
- 97+% occupied since Fall 2010



New Student Housing – Culebra & Greenhorn Halls

- 500 new beds in 4 different room configurations
- \$35.0M Debt repaid with Housing Room Rental Revenue
- Construction started 4/09 and completed 8/10 on schedule and under budget
- 90+% occupied in Fall 2010



Current Student Fee Funded Projects

- Student Recreation Center Corridor Extension: \$.766M Recreation Center Operating Fee
 - South Campus Entry Drive, Parking Addition, Visitor Center: \$.325M Student Facility Fee; \$.301M Parking Fees; \$.372M University funds
- Campus Lighting Improvements: \$.580M for two phases over two years
- Campus Pedestrian Improvements: \$.318M for new sidewalks and pathways
 - Soccer Field Improvements: \$.247M to add lights