



Aspen Mine -- \$3-5 million abandoned casino building now used for delivery of social services



Wildhorse Casino – closed in December 2008, loss of 60-80 jobs



Row of three abandoned casino buildings on Bennett Avenue



Abandoned casino building (left) on Bennett Avenue, next to Imperial Hotel & Casino that has filed for bankruptcy protection.



Two abandoned casinos on Bennett, just west of the Imperial



Two more abandoned casino buildings, west of picture to the left



Looking West on Bennett Avenue at central intersection; left abandoned Palace hotel & casino, abandoned Aspen Mine, abandoned Madame June casino; right parking lot, 3 abandoned casino buildings



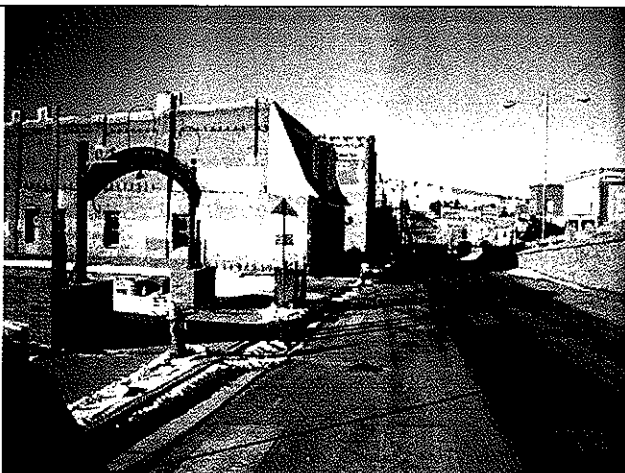
Looking east on Bennett Avenue – 3 active casinos on left (Bronco Billys, Gold Rush, Imperial), 5 active casinos on right (Womacks, Midnight Rose, JP McGills, Brass Ass & Creekers)



Abandoned poker parlor and gaming property west of Madame Junes abandoned casino



Abandoned casino – Madame June's across from county court house on Bennett Avenue.



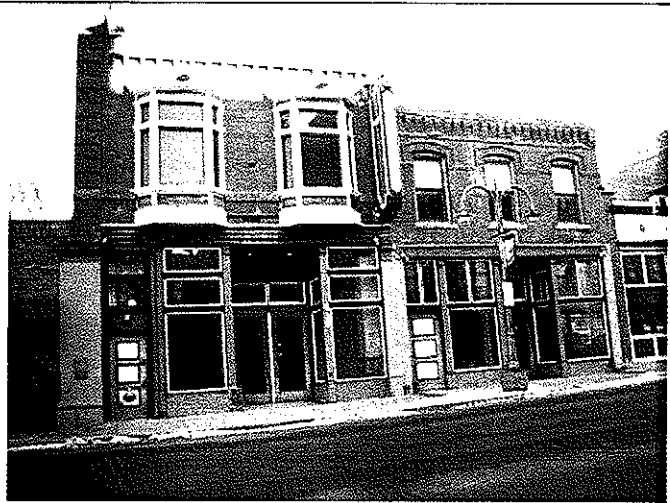
Looking west on Bennett Avenue (south side). Two abandoned gaming properties (Wild Horse) on Bennett, and undeveloped lots.



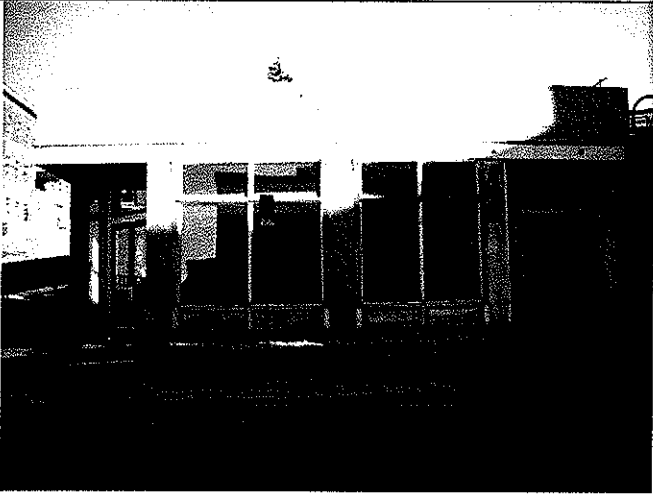
Looking north and east from picture to the left. All casinos on left (north side) of street are abandoned. Only one active business (pizza parlor/bar).



Row of 4 abandoned casino properties and vacant undeveloped lot at east end of Bennett Avenue. Far right building was a brew pub.



More abandoned casinos to the west of picture to the left. Includes Black Diamond casino that closed in 2008.



Abandoned Canyon Club on Bennett Avenue.



Abandoned businesses in gaming district, western end of Bennett near Gaming Control HQ



Looking south of county court house in heart of gaming district – undeveloped, vacant land.



Vacant gaming property center of town south side of Bennett Avenue next to Colorado Grande casino.

State	Pop. vs Colorado	# of Casinos	# of Employees	Annual Revenues (\$M)	Annual Wages (\$M)	State Tax Revenue (\$M)	Pro forma CO Tax Revenue (\$M)	Per Capita Economic Benefits
Colorado	4.9M	45	7,925	\$ 816	\$ 248	\$ 115	\$ 115	\$ 252
Indiana	31% larger	11	15,671	\$ 2,625	\$ 618	\$ 842	\$ 645	\$ 621
Iowa	39% smaller	17	10,434	\$ 1,363	\$ 336	\$ 315	\$ 513	\$ 684
Louisiana	12% smaller	18	18,009	\$ 2,566	\$ 666	\$ 559	\$ 633	\$ 897
Mississippi	40% smaller	29	30,572	\$ 2,891	\$ 950	\$ 350	\$ 583	\$ 1,486
Missouri	21% larger	12	12,160	\$ 1,592	\$ 334	\$ 417	\$ 345	\$ 406
New Jersey	79% larger	11	41,672	\$ 4,921	\$ 1,180	\$ 475	\$ 266	\$ 850
South Dakota	84% smaller	36	1,558	\$ 98	\$ 37	\$ 15	\$ 91	\$ 185

Sources: American Gaming Association; US Census – 2007 figures

Pro-forma CO Tax Revenues – estimated gaming tax revenues if Colorado casinos performed as well as other states on a per capita basis and paid the same taxes (note gaming tax rates are lower many states)

Per Capita Economic Benefits – estimated statewide economic contribution of casinos on a per capita basis

Testimony of Mark Sievers – January 15, 2009 Questions: [marksievers@skybeam.com](mailto:marksievers@skybeam.com), (719) 659-7580