

Ms. Georgianna Contiguglia, Chairman
Sen. Bob Bacon, Vice Chairman
Ms. Marilyn Eddins
Ms. Karen Goldman
Mr. David Hite
Mr. Richard Lee



Mr. Edward C. Nichols
Ms. Sharon Nunnally
Mr. John Rogers
Ms. Diann Sill
Rep. Paul Weissmann
Mr. Richard Weingardt

CAPITOL BUILDING ADVISORY COMMITTEE

State Capitol Building, Room 029
Denver, CO 80203-1784
(303) 866-3521

October 16, 2009

Representative Jim Riesberg, Chair
Room 029 State Capitol
Capital Development Committee
Denver, Colorado 80203

Dear Representative Riesberg:

On October 16, 2009, the Capitol Building Advisory Committee (advisory committee) approved a proposal from the Colorado Department of Human Services, Division of Vocational Rehabilitation Business Enterprise Program, to replace the tables and chairs and reupholster and refinish the booths in the Capitol Café. The existing furniture has been in place since 1992. This proposal is being forwarded to the Capital Development Committee for consideration pursuant to Section 24-82-108 (3)(a), C.R.S.

The Business Enterprise Program operates under the federal Randolph Sheppard Act of 1936. Its mission is to provide individuals who are blind with remunerative employment, business opportunities, and ongoing empowerment. The program currently operates 40 locations around the state, including the Capitol Café. The program has received federal American Recovery and Reinvestment Act (ARRA) moneys, a portion of which will fund the replacement of the Capitol Café furniture.

After discussion and contemplation of several possible design schemes at three meetings, the advisory committee approved and recommends the following (see Attachment A for photos):

- fabric scheme B;
- chair option B, with a mix of armless and arm chairs; and
- trash receptacle option A1.

The advisory committee also recommends that signage identifying the project as one funded with ARRA moneys be posted in the Capitol Café. We hope this recommendation meets with your committee's approval.

Sincerely,

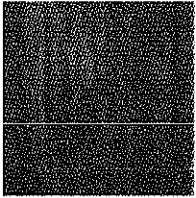
Georgianna Contiguglia, Chair
Capitol Building Advisory Committee

c: Kori Donaldson



Capital Building Coffee Shop
BOULDER ASSOCIATES PROJECT NO.: 1690.00

Preliminary Furniture Specifications
Rev. #1 September 16, 2009



Wood Finish

Item Code: S1 - Option A

Item: Lounge Chair

Quantity: 2

Manufacturer:

Description/
Model No:

Dimensions:

Finish:

Pulls:

Flammability:

General
Remarks:

Contact:

Location: Coffee Shop

Reference upholstery options at end of package.

Capital Building Coffee Shop
BOULDER ASSOCIATES PROJECT NO.: 1690.00

Preliminary Furniture Specifications
Rev. #1 September 16, 2009

**BOULDER
ASSOCIATES**

ARCHITECTS

Item Code: S2 Option A

Item: Lounge Settee

Quantity: 1

Manufacturer:

Description/
Model No:

Dimensions:

Finish:

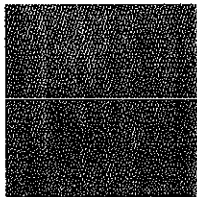
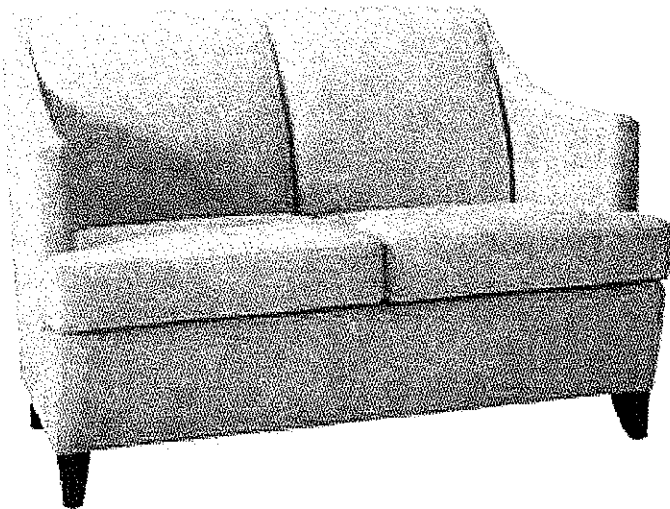
Pulls:

Flammability:

General
Remarks:

Contact:

Location: Coffee Shop



Wood Finish

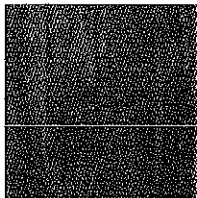
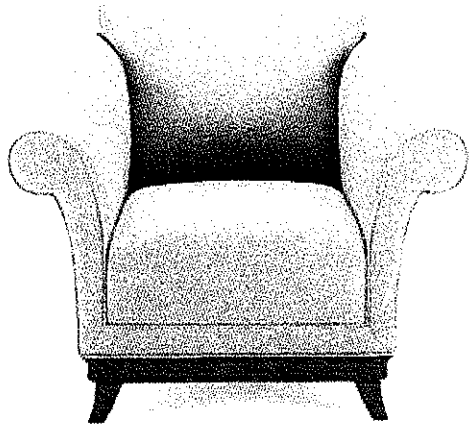
Reference upholstery options at end of package.

Capital Building Coffee Shop
BOULDER ASSOCIATES PROJECT NO.: 1690.00

Preliminary Furniture Specifications
Rev. #1 September 16, 2009

**BOULDER
ASSOCIATES**

ARCHITECTS



Wood Finish

Item Code: S1 - Option B

Item: Lounge Chair

Quantity: 2

Manufacturer:

Description/
Model No:

Dimensions:

Finish:

Pulls:

Flammability:

General
Remarks:

Contact:

Location: Coffee Shop

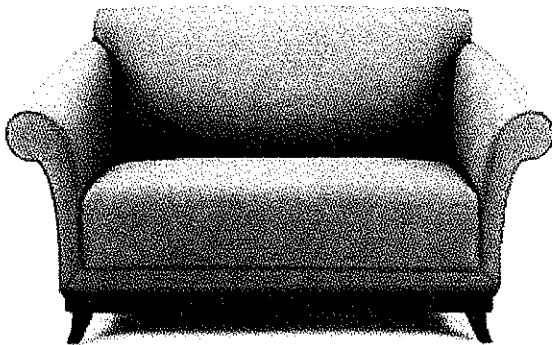
Reference upholstery options at end of package.

Capital Building Coffee Shop
BOULDER ASSOCIATES PROJECT NO.: 1690.00

Preliminary Furniture Specifications
Rev. #1 September 16, 2009

**BOULDER
ASSOCIATES**

ARCHITECTS



Item Code: S2 Option B

Item: Lounge Settee

Quantity: 1

Manufacturer:

Description/
Model No:

Dimensions:

Finish:

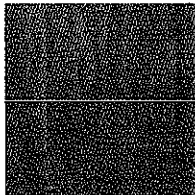
Pulls:

Flammability:

General
Remarks:

Contact:

Location: Coffee Shop

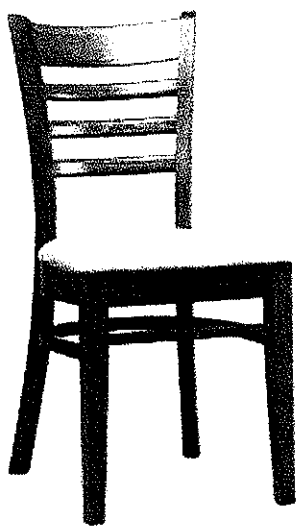


Wood Finish

Reference upholstery options at end of package.

Capital Building Coffee Shop
BOULDER ASSOCIATES PROJECT NO.: 1690.00

Preliminary Furniture Specifications
Rev. #1 September 16, 2009



Item Code: S3 Option -A
Item: Wood Cafe Chair

Quantity: 28

Manufacturer:

Description/
Model No:

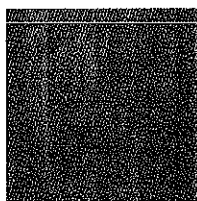
Dimensions:

Finish:

Workstation
Surface:

Panel Fabric:

Upholstery:



Wood Finish

Flammability:

General
Remarks:

Contact:

Location: Coffee Shop

Reference upholstery options at end of package.

Capital Building Coffee Shop
BOULDER ASSOCIATES PROJECT NO.: 1690.00

Preliminary Furniture Specifications
Rev. #1 September 16, 2009

**BOULDER
ASSOCIATES**

ARCHITECTS

Item Code: S3 Option -B

Item: Wood Cafe Chair with arm option

Quantity: 28

Manufacturer:

Description/
Model No:

Dimensions:

Finish:

Workstation
Surface:

Panel Fabric:

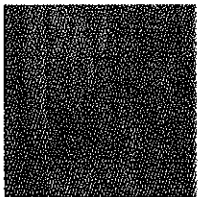
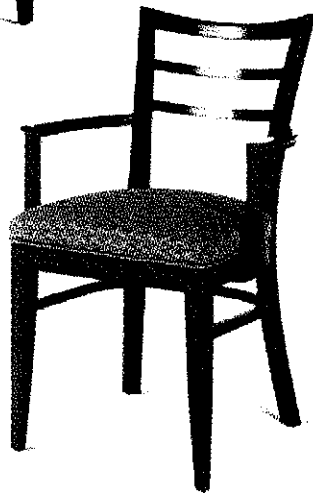
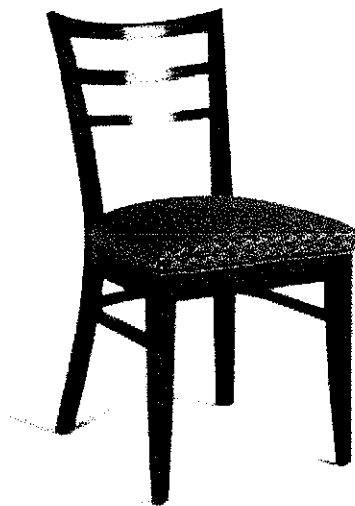
Upholstery:

Flammability:

General
Remarks:

Contact:

Location: Coffee Shop



Wood Finish

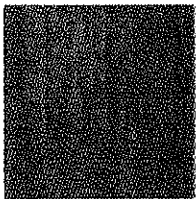
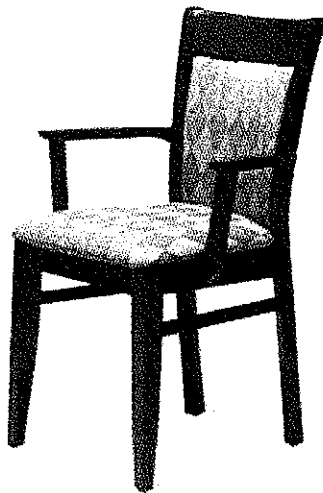
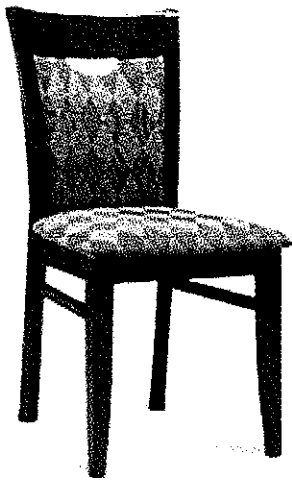
Reference upholstery options at end of package.

Capital Building Coffee Shop
BOULDER ASSOCIATES PROJECT NO.: 1690.00

Preliminary Furniture Specifications
Rev. #1 September 16, 2009

**BOULDER
ASSOCIATES**

ARCHITECTS



Wood Finish

Reference upholstery options at end of package.

Capital Building Coffee Shop
BOULDER ASSOCIATES PROJECT NO.: 1690.00

Preliminary Furniture Specifications
Rev. #1 September 16, 2009

Item Code: S3 Option -C

Item: Wood Cafe Chair with arm option

Quantity: 28

Manufacturer:

Description/
Model No:

Dimensions:

Finish:

Workstation
Surface:

Panel Fabric:

Upholstery:

Flammability:

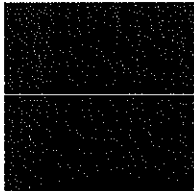
General
Remarks:

Contact:

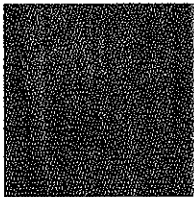
Location: Coffee Shop



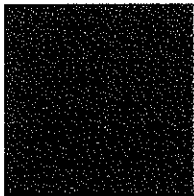
Edge Detail



Top Finish



Edge Finish



Base Finish

Item Code: T1

Item: Bistro Table

Quantity: 10

Manufacturer:

Description/ 18"x24" Top
Model No:

Dimensions:

Finish: Laminate Top Wood Edge

Workstation
Surface:

Panel Fabric:

Upholstery:

Flammability:

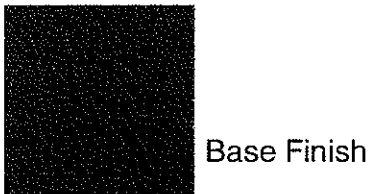
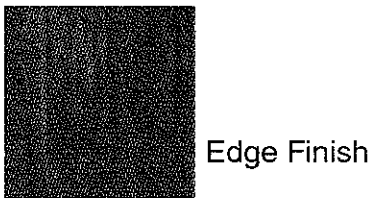
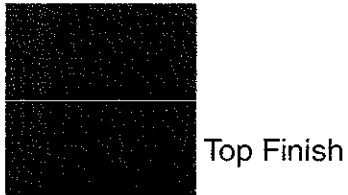
General
Remarks:

Contact:

Location: Coffee Shop

Capital Building Coffee Shop
BOULDER ASSOCIATES PROJECT NO.: 1690.00

Preliminary Furniture Specifications
August 21, 2009



Item Code: T2

Item: Booth Table Large

Quantity: 5

Manufacturer:

Description/
Model No:

Dimensions: 36"x48" Top

Finish: Laminate Top Wood Edge

Workstation
Surface:

Panel Fabric:

Upholstery:

Flammability:

General
Remarks:

Contact:

Location: Coffee Shop

Capital Building Coffee Shop
BOULDER ASSOCIATES PROJECT NO.: 1690.00

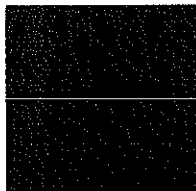
Preliminary Furniture Specifications
August 21, 2009

**BOULDER
ASSOCIATES**

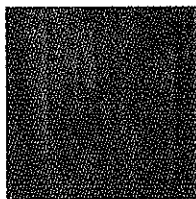
ARCHITECTS



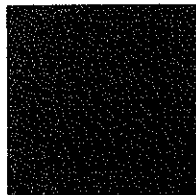
Edge Detail



Top Finish



Edge Finish



Base Finish

Item Code: T3

Item: Booth Table Small

Quantity: 4

Manufacturer:

Description/
Model No:

Dimensions: 30"x48" Top

Finish: Laminate Top Wood Edge

Workstation
Surface:

Panel Fabric:

Upholstery:

Flammability:

General
Remarks:

Contact:

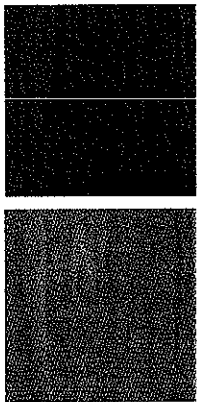
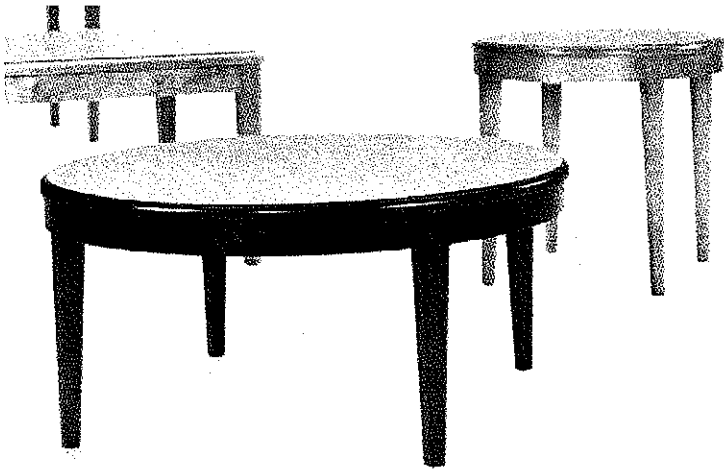
Location: Coffee Shop

Capital Building Coffee Shop
BOULDER ASSOCIATES PROJECT NO.: 1690.00

Preliminary Furniture Specifications
August 21, 2009

**BOULDER
ASSOCIATES**

ARCHITECTS



Top Finish

Edge/Base Finish

Item Code: T4

Item: Coffee Table

Quantity: 1

Manufacturer:

Description/
Model No:

Dimensions:

Finish:

Workstation
Surface:

Panel Fabric:

Upholstery:

Flammability:

General
Remarks:

Contact:

Location: Coffee Shop

Capital Building Coffee Shop
BOULDER ASSOCIATES PROJECT NO.: 1690.00

Preliminary Furniture Specifications
August 21, 2009

**BOULDER
ASSOCIATES**

ARCHITECTS



Finish and Color TBD

Item Code: A1

Item: Trash Receptacle

Quantity: 4

Manufacturer:

Description/
Model No:

Dimensions:

Finish:

Workstation
Surface:

Panel Fabric:

Upholstery:

Flammability:

General
Remarks:

Contact:

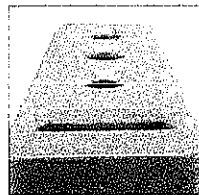
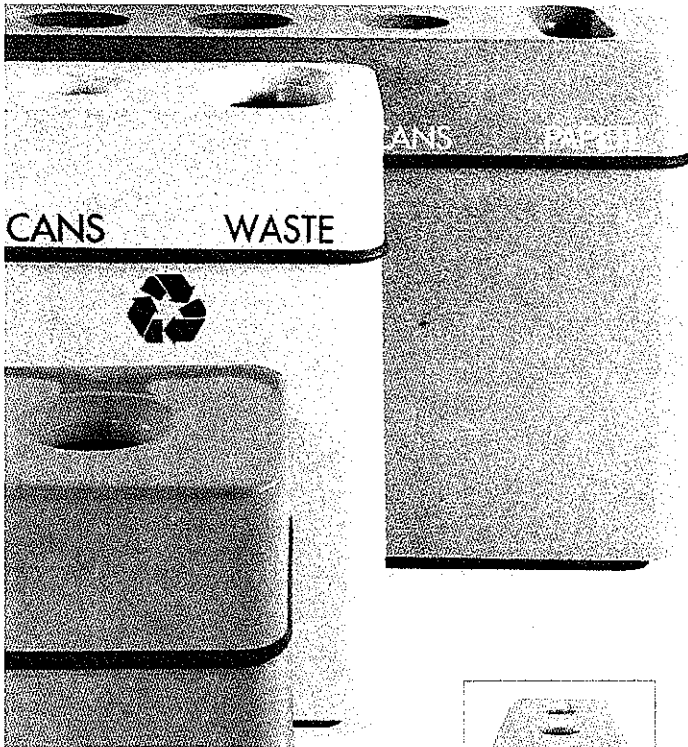
Location: Coffee Shop

Capital Building Coffee Shop
BOULDER ASSOCIATES PROJECT NO.: 1690.00

Preliminary Furniture Specifications
August 21, 2009

**BOULDER
ASSOCIATES**

ARCHITECTS



Finish and Color TBD

Item Code: A2

Item: Recycle Center

Quantity: 1

Manufacturer:

Description/
Model No:

Dimensions:

Finish:

Workstation
Surface:

Panel Fabric:

Upholstery:

Flammability:

General
Remarks:

Contact:

Location: Coffee Shop

Capital Building Coffee Shop
BOULDER ASSOCIATES PROJECT NO.: 1690.00

Preliminary Furniture Specifications
August 21, 2009

Fabric Scheme A

Upholstery fabrics to be used on new seating and booths



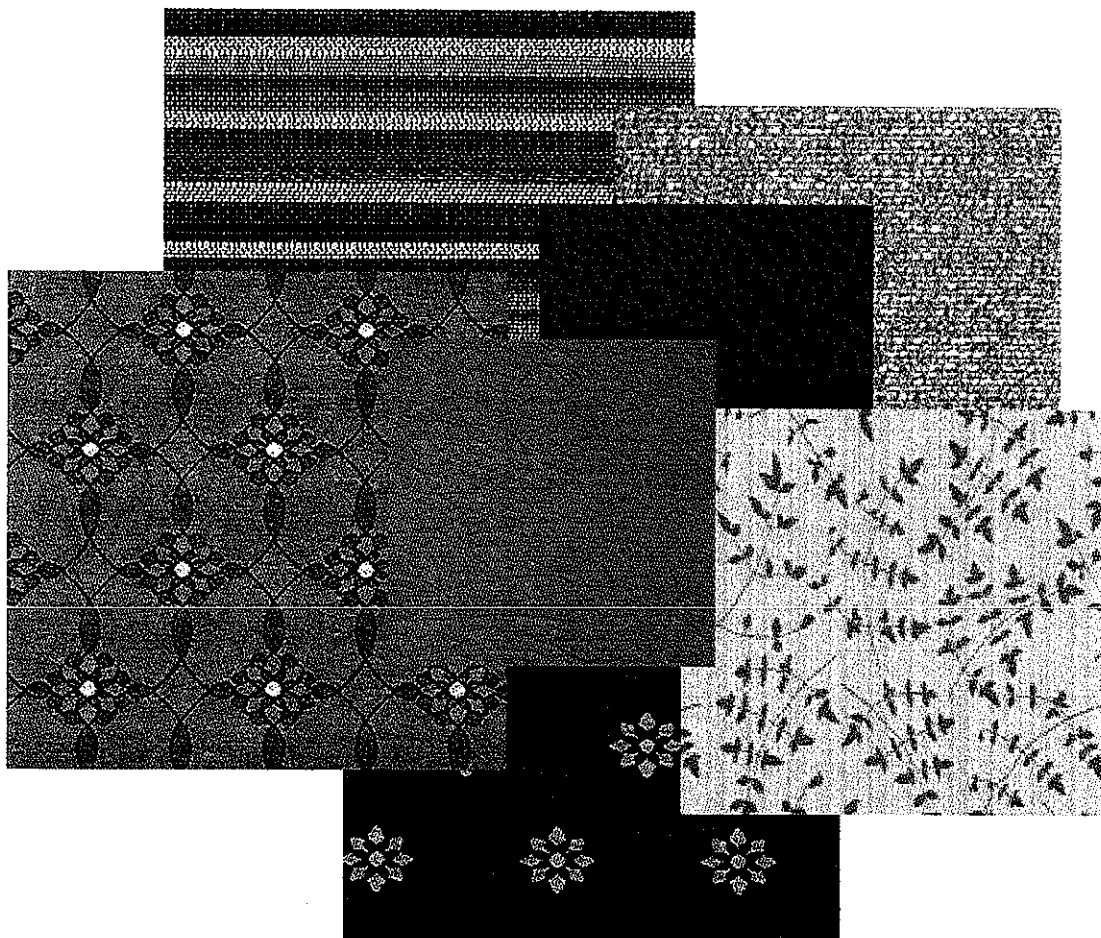
Reference actual fabric samples for exact color.

Capital Building Coffee Shop
BOULDER ASSOCIATES PROJECT NO.: 1690.00

Preliminary Furniture Specifications
Rev. #1 September 16, 2009

Fabric Scheme B

Upholstery fabrics to be used on new seating and booths



Reference actual fabric samples for exact color.

Capital Building Coffee Shop
BOULDER ASSOCIATES PROJECT NO.: 1690.00

Preliminary Furniture Specifications
Rev. #1 September 16, 2009

**BOULDER
ASSOCIATES**

ARCHITECTS

For additional information or assistance, please contact Elizabeth Steinhilber

Boulder Associates, Inc. | Architecture + Interior Design

Boulder Office
1426 Pearl Street | Suite 300
Boulder, Colorado 80302
303.499.7795 | F 303.499.7767