

Pikes Peak Rural Transportation Authority 2007 Annual Report to the Citizens

City of Colorado Springs, El Paso County, City of Manitou Springs, Town of Green Mountain Falls

Dear Citizen-

Thanks to you, we are celebrating the numerous transportation improvements throughout El Paso County and the municipalities of Colorado Springs, Green Mountain Falls and Manitou Springs.

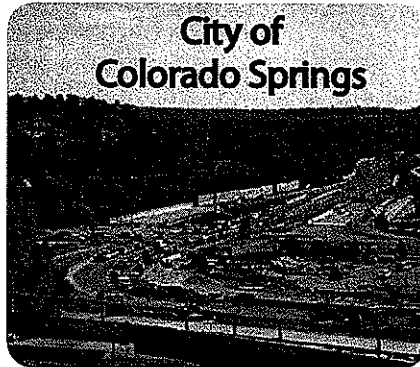
In November 2004, voters approved the Pikes Peak Rural Transportation Authority (PPRTA) and a one-cent sales tax to address necessary and critical transportation issues in our region. Because of the PPRTA, bridges have been reconstructed, streets have been overlaid, sidewalks and curb and gutter have been repaired, highway safety has been addressed, and transit services have been expanded. Through both the PPRTA Board and Citizens Advisory Committee, we provide oversight to ensure accountability to you, the taxpayer.

It's our privilege to report to you the accomplishments of the last year and share information about the many projects currently under way. The PPRTA will continue to move forward through committed leadership, dedicated staff and engaged citizens who share a common vision of an improved transportation system in our community.

Sallie Clark
PPRTA Board Chair

Tom Harold
PPRTA Citizen Advisory
Committee Chair

www.pprta.com



The Austin Bluffs Interchange at Union is the largest City PPRTA project under construction.

Austin Bluffs Parkway Interchange at Union Boulevard
\$35.8 million

Construction of a grade-separated interchange, bridging Austin Bluffs over Union, began in January 2007 and is on target to be completed in November 2008.

Fillmore Street at Union Boulevard

\$2.7 million

The Fillmore Corridor Improvement Plan completed improvements along East Fillmore from North Hancock to North Union. Drivers traveling east on Fillmore who turn north onto Union are now using the region's first side-by-side triple left-turn lane.

Cimarron Street Bridge

\$8.6 million

Construction of the Cimarron Bridge started in October 2007 and will be completed in August 2008. The appearance will mirror the new Bijou Bridge with stone monuments, historic-style lighting, and ornamental railings. The current construction schedule calls for a partial reopening (four lanes) by May 15, 2008.



2007 PPRTA Budget in Brief

RTA law allows administrative expenses up to one percent of revenues. In an effort to maximize the funding of transportation projects, the PPRTA kept those expenses at 0.62 percent of revenues in 2007. The PPRTA Board and staff worked with area legislators to pass a law that will add more dollars for local roads. The new law reduces the state's fee for collecting the PPRTA sales and use tax, bringing approximately \$250,000 annually back to the region for capital, maintenance, and transit projects and services.

Net Revenue:		\$ 72,859,711
Allocation:		
Transit	10%	\$ 7,285,971
Maintenance	35%	\$ 25,500,899
Capital	55%	\$ 40,072,840

Capital:	\$ 40,072,840
Green Mountain Falls	\$ 37,030
Manitou Springs	\$ 192,067
Colorado Springs	\$ 31,742,074
El Paso County	\$ 8,101,669

Maintenance:	Population	\$25,500,899
Green Mountain Falls	0.1615%	\$ 41,184
Manitou Springs	1.0407%	\$ 265,388
Colorado Springs	75.4175%	\$ 19,232,140
El Paso County	23.3803%	\$ 5,962,187

Transit:	\$ 7,772,221
Including fare box revenue and appropriation of a portion of Transit Reserve	

**For more budget details see
www.pprta.com**

**Academy/Fountain and Academy/Pikes Peak
\$1.9 million**

The City of Colorado Springs combined these two safety projects into a single design and construction contract. In June 2007, improvements to reduce accidents and traffic congestion were completed.

**I-25 Companion Projects
\$10 million**

PPRTA helped fund a portion of COSMIX improvements on the new Bijou Bridge and Corporate Drive extension. Both were completed in 2007.

**Union Boulevard
\$3.3 million**

PPRTA funds contributed about one-third of the cost for the award-winning safety, congestion and maintenance improvements finished in August along Union between Pikes Peak and Constitution. Project highlights included milling and resurfacing a 4.1 mile stretch extending north to Austin Bluffs.



Drivers have been enjoying Union's smooth tire rubber asphalt surface since last August.

**Vincent Drive
\$13.8 million**

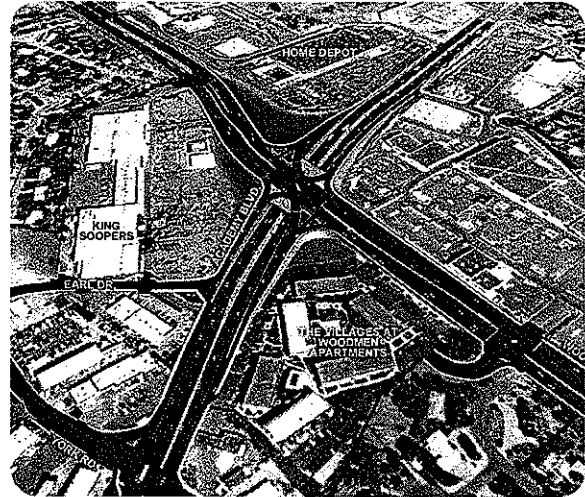
In 2008, design will begin for two adjacent projects that will be combined for cost savings: an east-west traffic flow project extending Vincent to connect Nevada with Dublin and the replacement of the Vincent Bridge at Cottonwood Creek.

**Milton E. Proby Parkway
\$53.1 million**

The design phase and right-of-way acquisition will continue in 2008 and 2009, with construction slated to begin in 2010 for a new limited access east-west expressway (Milton E. Proby) south of existing Drennan, between Academy and Powers.

**Woodmen Road Corridor Improvements - Phase 1
\$51 million**

Construction will begin in early 2009 on the first phase of improvements for the Colorado Springs portion of the Woodmen Corridor. This phase of construction will make Woodmen six lanes between Campus and Stinson. It also includes a grade-separated interchange at Woodmen and Academy.



Phase 1 construction on the City's portion of the Woodmen Corridor.

Tire Rubber Asphalt

Based on decades of success in other parts of the country, the City is testing the performance of tire rubber asphalt in a Colorado environment. Potential advantages include a smoother ride, reduced noise, better safety during rain storms, and use of recycled old tires. The most promising benefit is durability and the potential to reduce street resurfacing expenses by extending the life of roads. Union and Briargate east-bound from Lexington to Union offer the best examples of the City's experimentation with tire rubber asphalt.

www.pprta.com

**City of Colorado Springs
Maintenance**

Road Resurfacing

PPRTA funds helped resurface 34 miles of roadway and upgrade 3.5 miles of alleyways in 2007. PPRTA crews also filled a total of 33,287 potholes on City streets.

Curbs, Gutters, Pedestrian Ramps, and Sidewalks

PPRTA funds helped reconstruct concrete curbs, gutters and sidewalks, where needed, along 44 miles of repaved roadways and enabled \$1.4 million in high priority repairs.

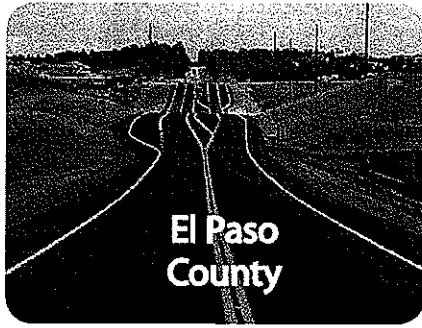
Traffic Improvements

In 2007, the City used PPRTA funds for 18 roadway, safety, and traffic operations projects to reduce congestion and crashes. Funding also covered the rebuilding and new construction of 16 traffic signals, averaging 35 years old, and replacement of 5,846 signal light bulbs with brighter energy-saving LED bulbs, including 1,000 pedestrian "Walk/Don't Walk" signals.

PPRTA funds allowed for the installation of large internally lit street signs at four major intersections and the replacement of 847 street signs with larger-lettered signs. PPRTA funds contributed towards the marking of 1,119 school crosswalk warning legends, 600 long-lasting school crosswalks and 2,153 miles of street-lane striping.



PPRTA funds helped repave Colorado Avenue.



Baptist/Hodgen Connection

El Paso County made significant progress on its capital project list, with three projects, and phase I of a fourth project completed in 2007. All but five of the 15 projects are in progress or completed.

Projects Completed

Baptist-Hodgen Connection

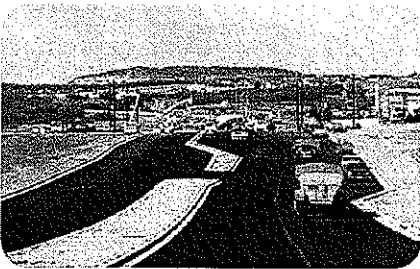
\$2.08 million

By constructing approximately 1.25 miles of two-lane paved roadway, the project provided a direct route to Interstate 25, saving motorists miles, time and fuel. This project won two awards in 2007: Best Overall Quality Rural Highway New or Reconstruction Award from the Colorado Asphalt Paving Association and the Quality in Construction Award from the National Asphalt Paving Association.

Struthers Road

\$3.5 million

A new four-lane road was built extending the current road north to the intersection of Baptist at Jackson Creek. This extension will provide a vital detour route in the event I-25 is closed and during the construction of the new I-25 interchange at Baptist Road.



Struthers Road paving

South Academy - Phase 1 (Westmeadow Bridge)

\$1.1 million

Construction of this bridge represents the first phase of the South Academy project, which will complete four-laning between Interstate 25 and State Highway 115.

www.pprta.com

Akers Drive

\$1.7 million

Connecting Constitution to North Carefree, this road provides increased traffic operations and improved access to numerous industrial properties.

Projects Under Construction

Baptist Road Widening

\$8.8 million

The Baptist Widening project expands Baptist to four lanes from Jackson Creek to Tari, providing a detour route during construction of the interchange at Interstate 25. Construction will end in August 2008.

South Academy - Phase 2

\$10.6 million

This project will complete the four-lane expressway section between Interstate 25 and State Highway 115. It includes the construction of new lanes from B Street to 115 to carry the westbound traffic, a new bridge over B and the Fort Carson Railroad tracks, and a new bridge over 115. The project will be completed in August 2008.

Projects In Design

Hodgen Road Corridor

\$15.9 million

This project will provide safety improvements to upgrade Hodgen to arterial standards and will start in 2009.

County Line Road (I-25 - Furrow Road)

\$2.9 million

This project will provide safety improvements along the corridor, to include adding shoulders, revisions to the vertical profiles to address the steep grades and improve sight distances, revisions to horizontal alignment, intersection improvements at Furrow, and providing turn lanes at key intersections. Construction will start in 2009.

Meridian Road (North)

\$7.3 million

This project will identify and design improvements to Meridian between Woodmen and Rex. Construction will start in 2009.

Meridian Road (South)

\$483,000

This project realigns Meridian between US-24 and Falcon Highway in conjunction with the Falcon Park and Ride Project. Construction will start in 2009.

Marksheffel Road

\$17.9 million

This project will widen Marksheffel to a four-lane arterial between Dublin and Constitution. Eventual plans include a six-lane major arterial roadway. Construction will start in 2009.

South Academy - Phase 3 & 4

\$14 million

This project will provide improvements between B Street and Interstate 25. Phase 3 will construct a "continuous flow intersection" with new ramp connections to Pikes Peak Community College and South Academy Station development site, auxiliary lanes, and modifications to the on and off ramps at Interstate 25. Phase 4 will construct a grade separated ramp system "Texas u-turn" to provide access to westbound South Academy from B and Fort Carson's Gate 4. Construction will start in 2008.

El Paso County Maintenance

Curbs, Gutters, and Sidewalks

In 2007, El Paso County DOT spent \$967,177 for new sidewalks, curbs and gutter, and pedestrian ramps. All of the projects were in the southern portion of the county, and included Metropolitan, Athletic, Caballero, Sneffels, Maxwell, and Coventry; 14,200 linear feet of curb and gutter; 5,966 square yards of sidewalk; and 57 pedestrian ramps as well as other projects.

Paving

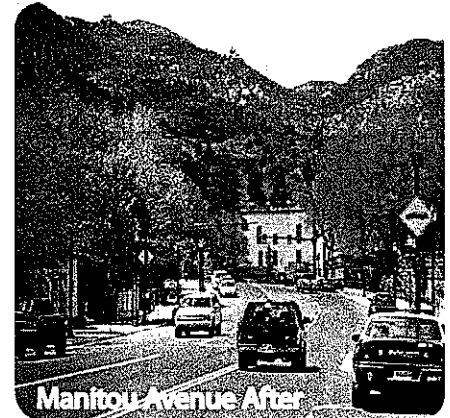
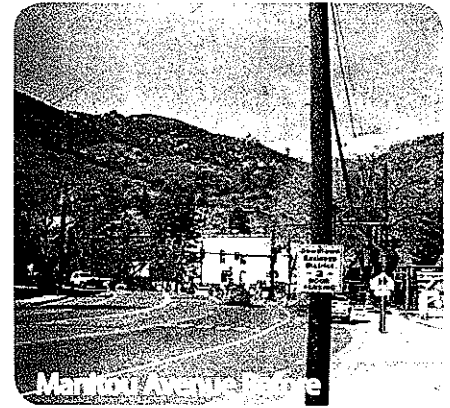
The total amount budgeted for paving in 2007 was \$4.3 million. El Paso County spent \$4,088,657 and will add the remaining \$211,343 to the 2008 paving list. The 39 roads paved in 2007 totaled 39.13 miles. Out of the 39 paved roads, Judge Orr, Yoder, Meridian, Peyton Highway, Calhan Highway, and Falcon Highway totaled \$2,095,197 out of the \$4,088,000 that was spent in 2007.

www.pprta.com



City of Manitou Springs Maintenance

In 2007, the City of Manitou Springs undertook the rehabilitation of a major primary arterial - Ruxton Avenue. Ruxton serves as a passage through a mountain canyon that has residential and economic importance. Ruxton is heavily populated along its length and is the location of the Pikes Peak Cog Railway Depot, which is one of the City's largest economic generators. Participation in the PPRTA allowed the City to mill and overlay Ruxton through its entire length of 5,686 linear feet, which had not been previously achieved over numerous decades of heavy traffic and tourist bus use.



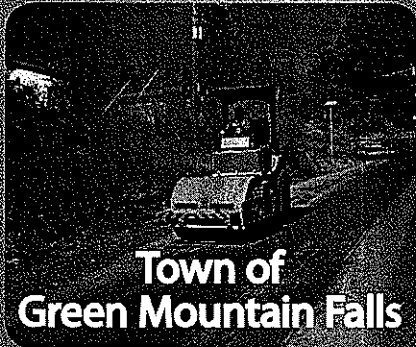
City of Manitou Springs Capital Projects

\$1.3 million

The City of Manitou Springs completed phase 1 of pedestrian and traffic enhancement to the 600 block of Manitou Avenue, in May 2007.

Enhancements included improved drainage facilities, ADA compliant crosswalks and bump-outs, the under-grounding of overhead utilities, an emergency-activated traffic control warning light for the Fire Department driveway, curbs, gutters, sidewalks, roadway milling and overlay, street furniture, and landscaping.

www.pprta.com



The Town of Green Mountain Falls has three perpetual road projects currently under way.

The Erosion Control Project and the Road Rehabilitation Project have equal priority and ultimately work together. Sixty percent of Green Mountain Falls' streets are of aggregate roadway surface and over the course of time have eroded to the point of requiring between 8 and 26 inches of lift in an environment where grades exceed 20 percent and pitches are greater than 6 percent. The larger challenges include acquiring road building materials and establishing pitch/compaction to compliment existing drainage.

The Right-of-Way (ROW) Reclamation Project is aimed at recovering Town ROW that has been encroached upon and includes the removal of brush, trees, boulders and man-made obstacles.

PPRTA funds allow Town management the ability to seek out assets and attack the projects with optimism. A vibratory compactor was purchased to assist with the road building and magnesium chloride application. A 3-cubic yard wheel loader was also purchased to complement the road base mixing, hauling efforts and will be of adequate size to remove tree stumps and boulders from the ROW.

Erosion control was enhanced through better culvert management and placement.

Acquiring thousands of yards of road building materials and distributing them on the aggregate roadway surfaces throughout the community was made possible by PPRTA proceeds.



Contact Information

City of Colorado Springs

Capital Projects: 385-5918

Rotholes: 385-6808

Streets: 385-5934

Alleys: 385-5938

Pedestrian Ramps/Sidewalks,

Curbs and Gutters:

385-5411

Signs and Markings: 385-6721

Traffic Signals: 385-5966

Mountain Metropolitan Transit:

385-RIDE (7433)

Website: www.springsgov.com

El Paso County

Capital Projects:

Andre Brackin, 520-6460

andrebrackin@elpasoco.com

Road Maintenance:

Carl McClellan, 520-6460

carlmcclellan@elpasoco.com

Website: www.elpasoco.com

City of Manitou Springs

Mike Leslie, 685-2548

mleslie@coms.gov

Website: manitousprings-co.gov

Town of Green Mountain Falls

Robert McArthur, 684-7850

gmpublicworks@comcast.net

Website: www.greenmountainfalls.org

PPRTA

Rick Sonnenburg

Program & Contacts Manager

471-7080 ext 138

rsonnenburg@ppacg.org

Beverly Majewski

Financial Manager

471-7080 ext 135

bmsjewski@ppacg.org

Website: www.pprrta.com

PPRTA Board Members

Commissioner Sallie Clark, Chair

sallieclark@elpasoco.com

Vice Mayor Larry Small, Vice-Chair

lsmall@springsgov.com

Mayor Eric Drummond

edrummond@coms.gov

Councilmember Jerry Heimlicher

jheimlicher@springsgov.com

Commissioner Dennis Hisey

dennishisey@elpasoco.com

Mayor Lionel Rivera

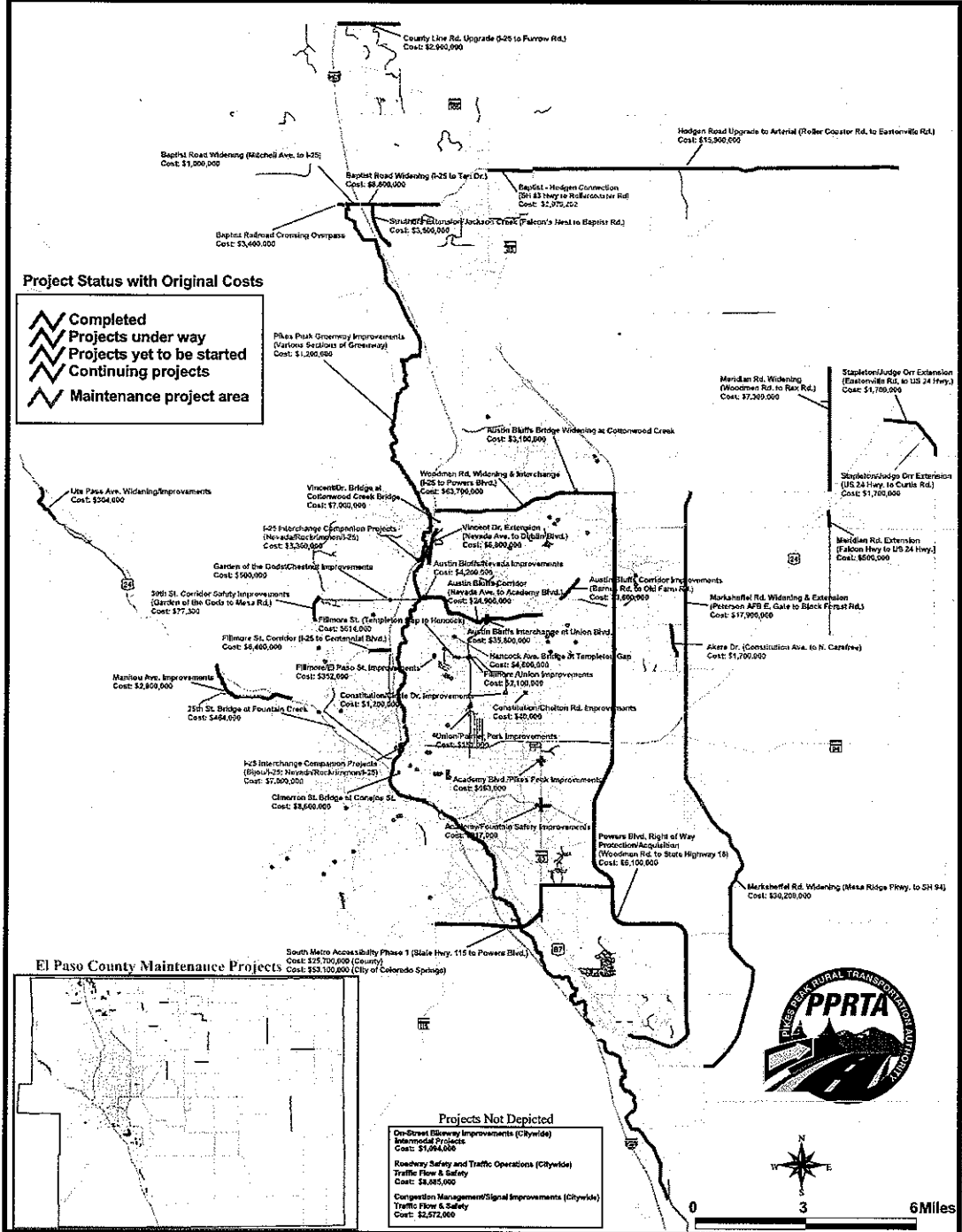
lrivera@springsgov.com

Mayor Tyler Stevens

tmfmayor@tymsacoc.net

Commissioner Wayne Williams

waynevilliams@frijol.com



0 3 6 Miles



2008 CITIZENS SURVEY

Based on your current knowledge of the PPRTA and its projects, how would you rate the overall performance of the PPRTA since it was passed by the voters in 2004? Please circle your answers.

- A. Excellent
- B. Good
- C. Reasonable
- D. Poor

How would you rate the PPRTA with respect to providing information to the public about its projects and activities?

- A. Excellent
- B. Good
- C. Reasonable
- D. Poor

The PPRTA Annual Report to the Citizens is printed and distributed at a cost of about \$28,000. In providing information to the public about the use of their PPRTA tax revenues, do you feel this is a:

- A. Cost effective use of PPRTA funds
- B. Poor use of PPRTA funds

How would you prefer to get your information on PPRTA Projects?

- A. TV News
- B. Regularly Updated Website
- C. Newspaper
- D. Printed Annual Report

Your comments for the PPRTA:

Citizen Zip Code (Optional):

Citizen Name (if you wish to be contacted):

Citizen E-mail or Phone Number (if you wish to be contacted):

This survey may be mailed to: PPRTA Survey, 15 South 7th Street, Colorado Springs, CO 80905 and is also available online at: www.pprrta.com

Mountain Metropolitan Transit

Mountain Metropolitan Transit provides service in the Pikes Peak Region including the City of Colorado Springs, El Paso County, and City of Manitou Springs. PPRTA-supported services include fixed-route, FrontRange Express (FREX), FREE Downtown Shuttle, Metro Mobility and Metro Rides. This year we:

- Purchased 19 new FREX commuter buses using \$6.32 million in first-time state funds and a \$1.68 million match from the PPRTA. PPRTA funds ensure operation of FREX in 2008. A new, updated identity was created for FREX building on the Mountain Metropolitan Transit brand.
- Made route improvements including two new weekday, peak hour Express Routes (E3 - Union Town Center Express and E4 - Voyager Parkway Express) and

implemented a fourth Express Route to Schriever Air Force Base from the Widefield/Security/Fountain area. Route 24 - Peterson Air Force Base was re-routed to accommodate the relocation of the BX and gate closures.

Purchased seven new replacement fixed-route buses, nine replacement paratransit (Metro Mobility) vans plus five vans for paratransit service expansion. PPRTA funds will be used to purchase two vehicles for the Downtown Shuttle in 2008.

Installed Talking Signs on all buses and at the Downtown Terminal to assist visually impaired riders. PPRTA funds also assisted those with disabilities by providing funding for ADA access improvements at the Citadel Mall and Pikes Peak Community College Transfer Stations as well as other improvements. PPRTA funds supported human service providers Silver Key and Amblicab. PPRTA will help fund those agencies again in 2008.

Awarded three first-place national awards from the American Public Transportation Association (APTA) for outstanding marketing and communications materials.

